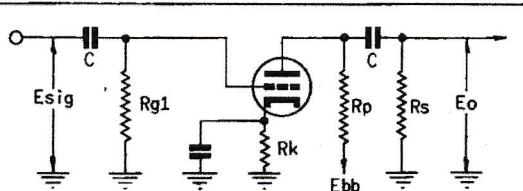


## CLASS A RESISTANCE-COUPLED AMPLIFIER

Rp Meg.	Rg1 Meg.	Rs Meg.	Ebb = 90 Volts			Ebb = 180 Volts			Ebb = 300 Volts		
			Rk	Gain	Eo	Rk	Gain	Eo	Rk	Gain	Eo
0.10	*	0.10	4300	26	5	2000	36	18	1300	40	37
0.10	*	0.24	4700	33	8	2200	43	26	1500	47	48
0.24	*	0.24	8200	37	10	3900	50	24	2400	54	45
0.24	*	0.51	9100	42	11	4300	54	29	3000	62	56
0.51	*	0.51	12000	46	12	6200	59	29	4300	66	55
0.51	*	1.0	13000	50	13	6800	63	36	5100	71	66
0.24	10	0.24	—	40	4	53	16	—	62	34	—
0.24	10	0.51	—	48	6	62	22	—	68	44	—
0.51	10	0.51	—	49	6	64	19	—	71	41	—
0.51	10	1.0	—	53	9	68	25	—	77	50	—



Note: Coupling capacitors (C) should be selected to give desired frequency response. Rk should be adequately by-passed.

Notes: 1. Eo is maximum RMS voltage output for five percent (5%) total harmonic distortion. 2. Gain measured at 2.0 volts RMS output. 3. For zero-bias data generator impedance is negligible. \*Value of Rg1 is non-critical.

## AVERAGE PLATE CHARACTERISTICS

