



R-Tools Simulation - Design Output Summary

User: Anthony Tagg (atagg@etratesh.com)
Project: Aelph
Simulation Date: 2009-03-19 22:42:22

Thermal Design Details

Heatsink type: Extrusion
Part number: Extrusion: 9013
Weight: 3.58069 kg
Heatsink dimensions: 176.53 mm wide x 254.0 mm long x 66.39 mm high
Material: Aluminum
Finish: B

Environment

Ambient Temperature: 72.0 F
Altitude: 300.0 ft

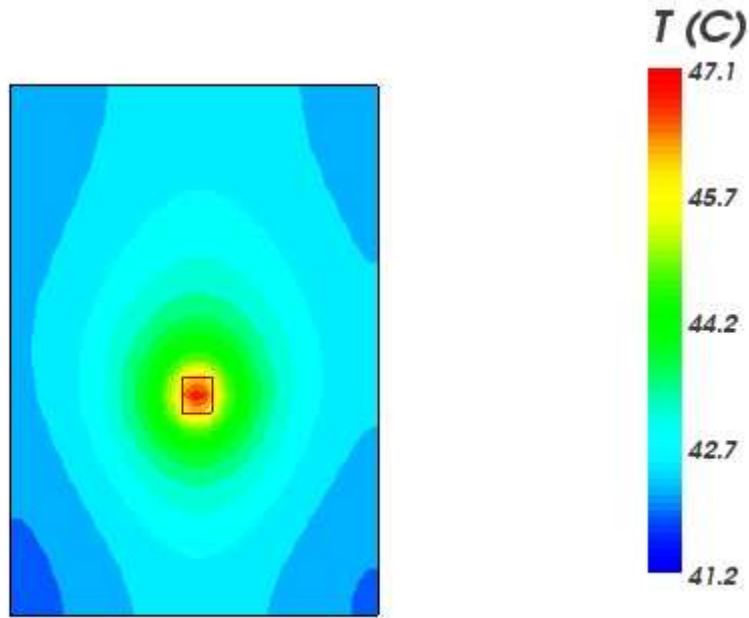
Thermal Design Details

Source Names	%sc	Power	Tsink-avg	Temperature		
				Tsink-max	Tcase	Tjunction
			C	C	C	C
source1	0.5%	32.0 W	46.8	47.1	47.1	84.1

Hydraulic Design Details

Type of Flow: Natural convection
Fluid: Air
Total Pressure Drop: 5.891 Pa
Exit Temperature: 41.7 C

Baseplate Temperature Profile



[Download Qfin4 project file](#)