



R-Tools Simulation - Design Output Summary

User: Anthony Tagg (atagg@etrattech.com)
Project: Aelph
Simulation Date: 2009-02-09 19:04:03

Thermal Design Details

Heatsink type: Extrusion
Part number: Extrusion: 9002
Weight: 2.57309 kg
Heatsink dimensions: 176.81 mm wide x 203.2 mm long x 70.86 mm high
Material: Aluminum
Finish: undefined

Environment

Ambient Temperature: 72.0 F
Altitude: 300.0 ft

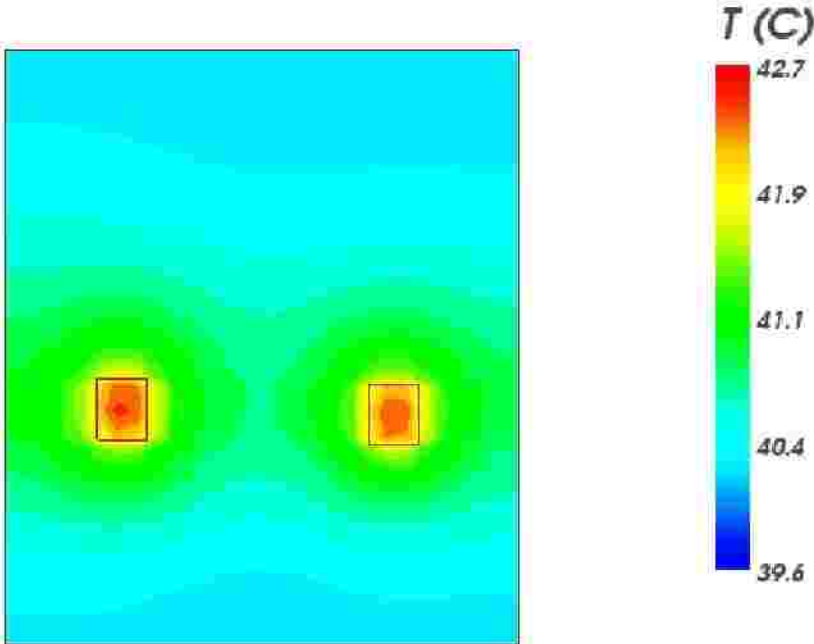
Thermal Design Details

Source Names	%sc	Power	Temperature			
			Tsink-avg	Tsink-max	Tcase	Tjunction
			C	C	C	C
source3	1.0%	18.0 W	42.3	42.7	42.7	75.5
source2	1.0%	18.0 W	42.4	42.7	42.7	75.6

Hydraulic Design Details

Type of Flow: Natural convection
Fluid: Air
Total Pressure Drop: 4.713 Pa
Exit Temperature: 38.9 C

Baseplate Temperature Profile



[Download Qfin4 project file](#)