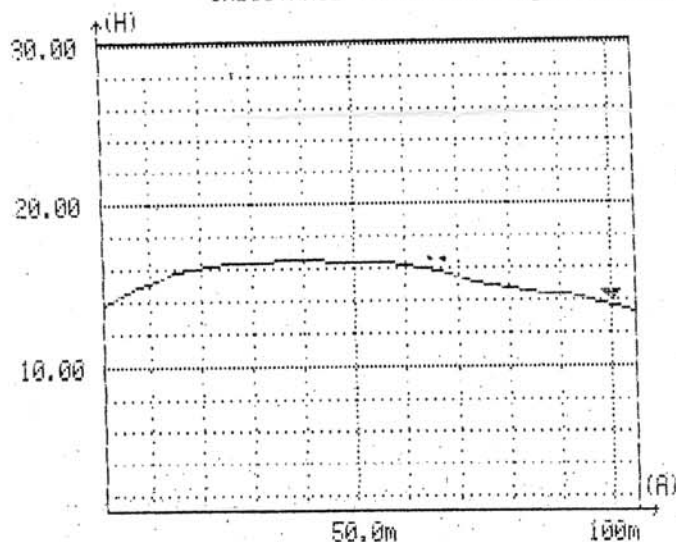


JS-6123HS : FREQUENCY RESPONSE

| ZP         | B-SG | -0.5dB    | -1dB      | -2dB      | -3dB      |
|------------|------|-----------|-----------|-----------|-----------|
| 2.5K SEC8Ω | 50%  | 45Hz~42KH | 28Hz~55KH | 18Hz~67KH | 14Hz~72KH |
| 3.5K SEC8Ω | 43%  | 41Hz~40KH | 28Hz~53KH | 18Hz~64KH | 14Hz~70KH |
| 5K SEC8Ω   | 35%  | 48Hz~28KH | 29Hz~37KH | 18Hz~53KH | 14Hz~61KH |

INDUCTANCE VS DC BIAS 2.5K FUNCTION

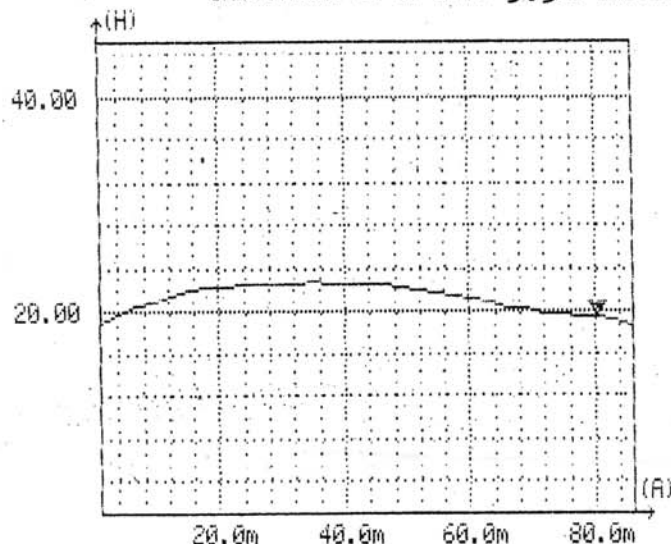


MKR:100.2mA  
L:19.740 H  
Q:9.212 Q

FREQ:60.00 Hz LEVEL:500.0mV  
SPEED:SLOW ALC:OFF  
CCT:SER

RETURN

INDUCTANCE VS DC BIAS 3.5K FUNCTION

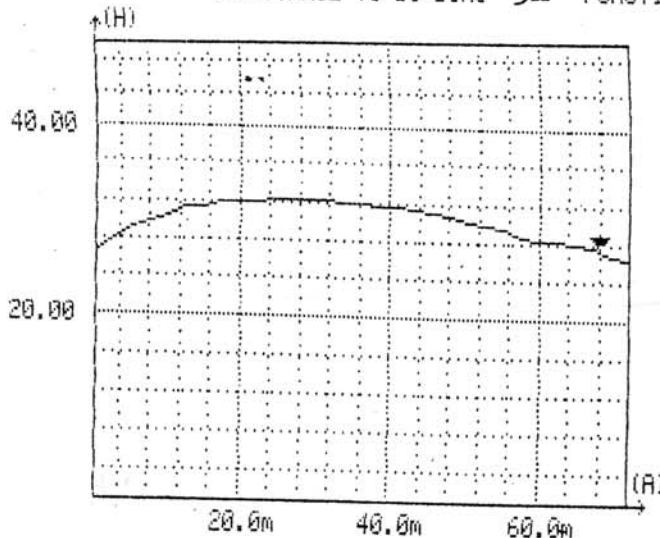


MKR:80.33mA  
L:19.545 H  
Q:9.562 Q

FREQ:60.00 Hz LEVEL:500.0mV  
SPEED:SLOW ALC:OFF  
CCT:SER

RETURN

INDUCTANCE VS DC BIAS 5K FUNCTION

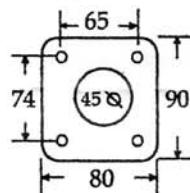
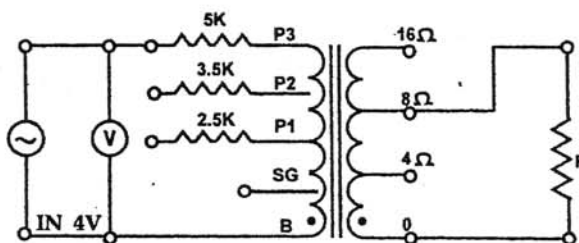


MKR:68.15mA  
L:27.38 H  
Q:9.396 Q

FREQ:60.00 Hz LEVEL:500.0mV  
SPEED:SLOW ALC:OFF  
CCT:SER

RETURN

- 初級阻抗PRIMARY IMPEDANCE(KΩ): BP1 2.5K BP2 3.5K BP3 5K
- 輸出功率 (出力) POWER 20 W
- 漏電流LEAKAGE CURRENT(MA)  
AC 1 KV P.S 0.95 P.E 0.12  
DC 1 KV P.S 0.03 P.E 0.03
- 耐壓絕緣阻抗INSULATION RESISTANCE:  
AC 1 KV  $\infty$  MΩ



單位 MM  
高度 HEIGHT 110 MM  
重量 WEIGHT 3.23 KG