

PCB WORK INSTRUCTIONS

DWG 420-0211-A1

NOTES:

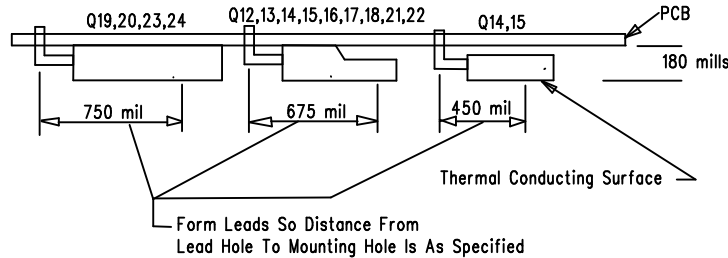
UNLESS OTHERWISE SPECIFIED:

1. SQUARE PADS ON THRU HOLE PARTS (ie: CONNECTORS, DIPS, SIPS, LEDS) DENOTE PIN 1.
2. ALL BOARDS REQUIRE A COMPLETE AND THOROUGH VISUAL INSPECTION.
3. ALL BOARDS MUST BE BARE BOARD TESTED.
4. ASSEMBLE AND SOLDER PER ANSI/IPC-A-610B.

LOADING

5. LOAD POWER TRANSISTORS AS INSTRUCTED BELOW AFTER WAVE.

USE A JIG TO POSITION MOUNTING HOLES CORRECTLY.
MOUNT ON BACK SIDE OF BOARD WITH PART NUMBER SIDE
FACEING BOTTOM OF BOARD AND THERMAL CONDUCTING SIDE FACEING DOWN.



6. MOUNT S1 TO BOTTOM OF BOARD AFTER WAVE AS SHOWN.



7. FUSE LOADING - F1
FOR 100V & 120V MODEL:
LOAD FUSE, 5MM, T3.15AL 250V SEMKO

FOR 230V MODEL:
LOAD FUSE, 5MM, T1.6AL 250V SEMKO

FINAL QA

8. CHECK THAT J1,2,3,4,5,6 & 7 ARE FLUSH WITH PCB AND STRAIGHT.
9. GLUE C30 TO J5 WITH SILICON RTV

NOT VALID UNLESS STAMP IS RED

gallien technology

2240 PARAGON DRIVE
SAN JOSE CA. 95131
VOICE: 408-441-8081
FAX: 408-441-8085

APPROVALS		TITLE:	
INIT	DATE	MB150 POWER AMP	
DESIGNED: R.A.G.	3/26/01	SIZE	DRAWING NO: 405-0211-A1
DRAWN: R.A.G.	6/26/03	B	PART NO: 145-00211-A1
ELEC:			REV. A1
MECH:		COMPANY:	GALLIEN-KRUEGER
GERBER FILE NAME: sst01289		FILENAME:	5211A1.sch

LAYER DESCRIPTION:

SOLDER MASK