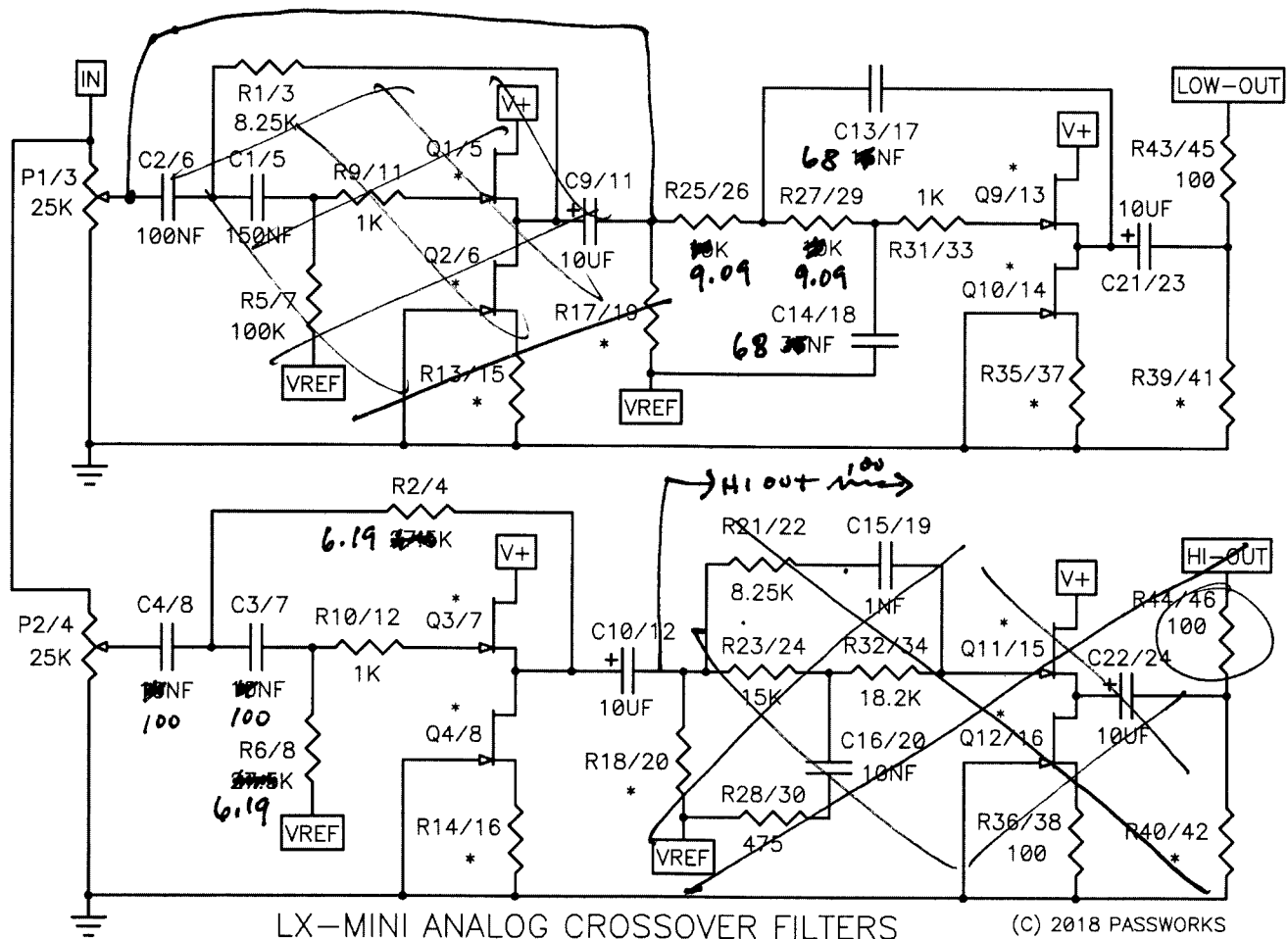
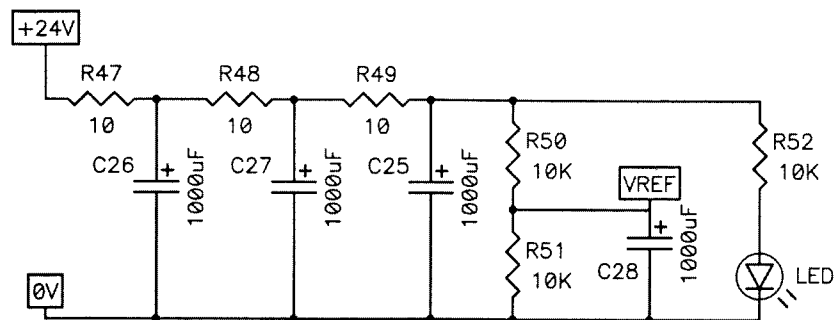


So here's the actual circuit of the analog LX-mini crossover:



PART NUMBERS: LEFT CH / RIGHT CH All JFETS SELECTED AND MATCHED
RESISTORS 13 - 20, 35 - 42 VALUE SPECIFIC TO JFET SELECTION

And here is the power supply filtering for the external switching 24 volt power supply. The crossover draws about 75 ma current, and I recommend a quiet wall-wart rated at 500 mA or more. The inexpensive Triad WSU240-0500-13 gives excellent results, but you are free to use something else, including regulated linear supplies.



LX-MINI ANALOG CROSSOVER POWER SUPPLY