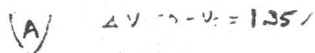
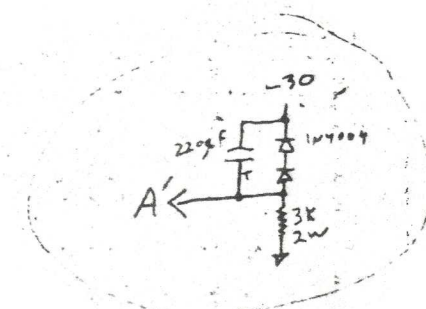
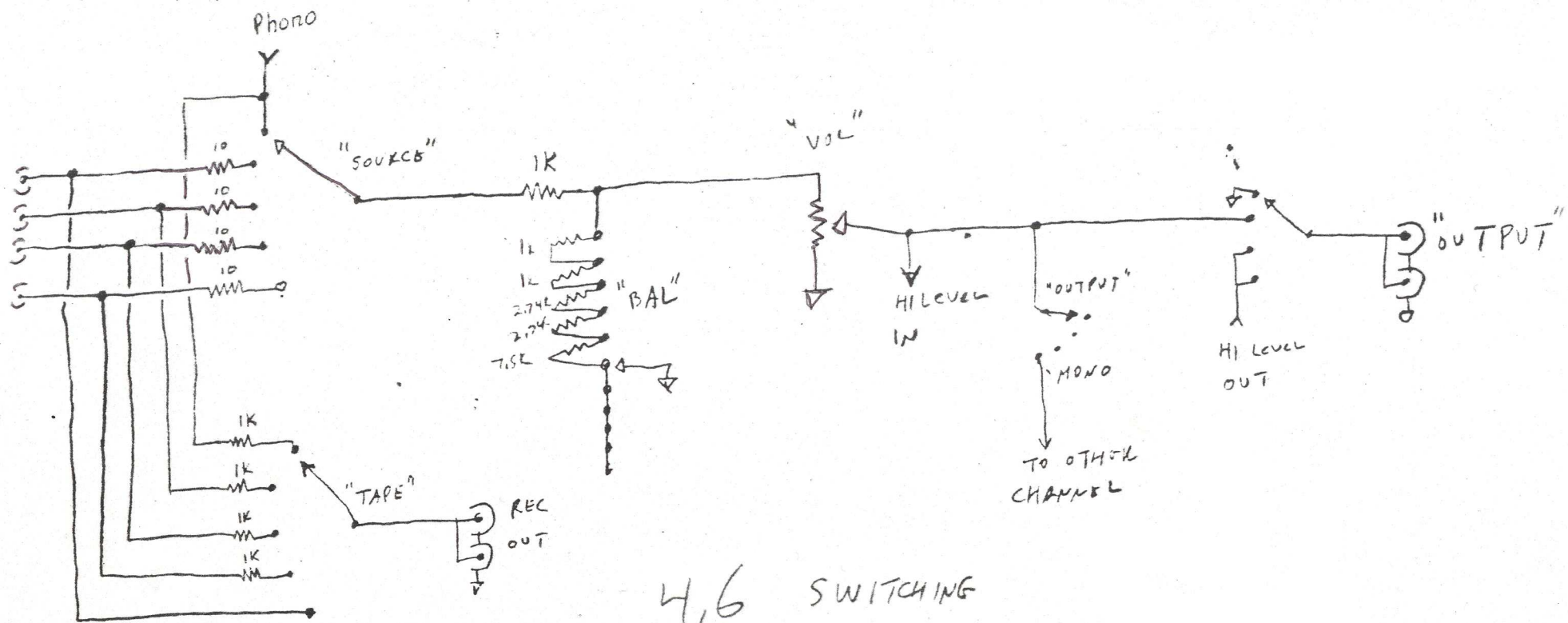


2ND  
STAGE  
PHONO



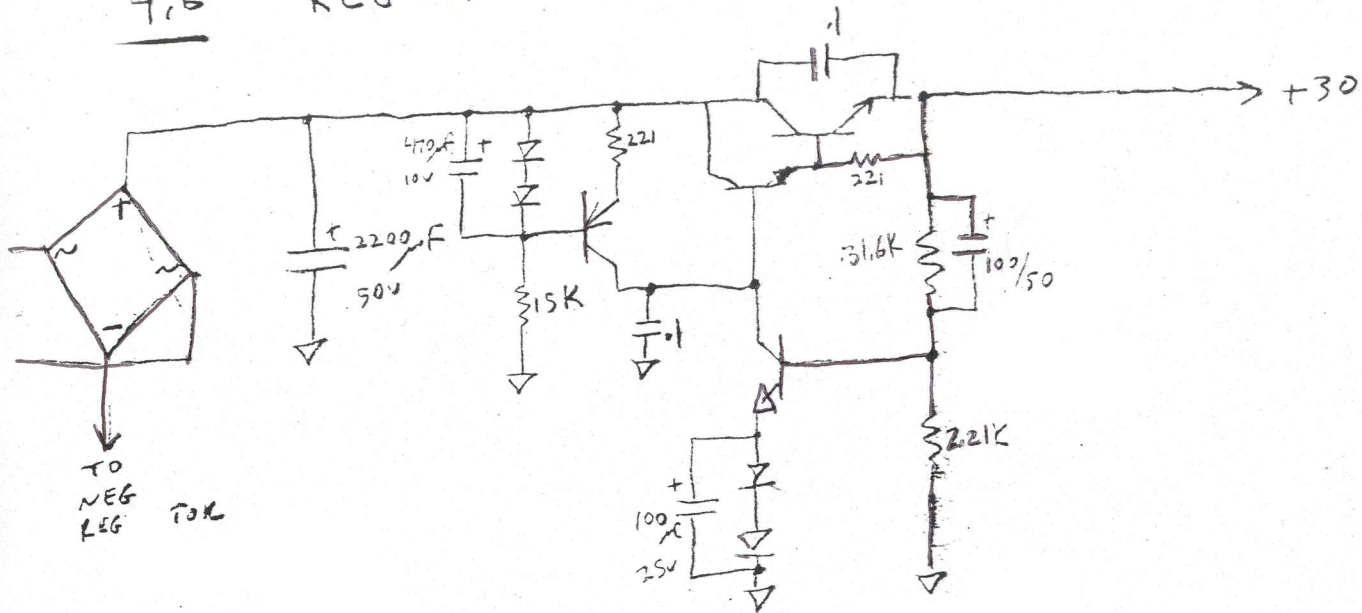
- (9)  $\Delta V \approx 22V$   $1K\Omega$  GAIN = 66  
 (10)  $\Delta V = 67$   
 (11)  $3V \Delta V = 67$   
 (12)  $3V = 67$   
 (13)  $V_{in} - V_{out} < 2V$   $1K\Omega$  GAIN = 40 dB (STB)  
 $10 + 20 \text{ STB} = 40 \text{ dB (S.W.)}$



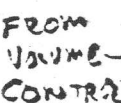


4,6 SWITCHING

## 4.6 REGULATOR



4.6



LAST #  
R/16  
C5  
D1  
Q7