



*3ch Head*



**3 CHANNEL DUAL / TRIPLE RECTIFIER SOLO HEAD**

**FRONT PANEL**

CHANNEL 1 (GREEN)		
Control Function	Type	Mesa Part#
Gain	Pot	593792
	Knob	408110
Master	Pot	593792
	Knob	408110
Presence	Pot	592738
	Knob	408110
Treble	Pot	593148
	Knob	408110
Middle	Pot	593736
	Knob	408110
Bass	Pot	593148
	Knob	408110
Cln/Pushed	Switch	607101
Green LED	LED	395538
	Lens	703300

CHANNEL 2 (ORANGE)		
Control Function	Type	Mesa Part#
Gain	Pot	592794
	Knob	408110
Master	Pot	593792
	Knob	408110
Presence	Pot	593737
	Knob	408110
Treble	Pot	592738
	Knob	408110
Middle	Pot	593737
	Knob	408110
Bass	Pot	593739
	Knob	408110
Raw/Vtg/Mdrn	Switch	607303
Orange LED	LED	395433
	Lens	703300

CHANNEL 3 (RED)		
Control Function	Type	Mesa Part#
Gain	Pot	592794
	Knob	408110
Master	Pot	593792
	Knob	408110
Presence	Pot	592151
	Knob	408110
Treble	Pot	592738
	Knob	408110
Middle	Pot	593737
	Knob	408110
Bass	Pot	593148
	Knob	408110
Raw/Vtg/Mdrn	Switch	607303
Red LED	LED	395753
	Lens	703300

MISC PARTS		
Control Function	Type	Mesa Part#
Input	Jack	610120
	Pot	593148
Output	Knob	408110
Solo	Pot	593148
	Knob	408110
Pilot Light	Bulb	703047
	Lens	703782
	Light Holder	703850
Standby	Switch	600631
Power	Switch	600631

**REAR PANEL**

MISC PARTS
------------

MISC PARTS
------------

### 3 CHANNEL DUAL / TRIPLE RECTIFIER SOLO HEAD

Control Function	Type	Mesa Part#
Slave	Pot	592378
	Knob	408111
	Jack	618112
Speaker Outs (5)	Jack	618112
FX Loop	Assign Rotary Sw	608110
		Knob 408111
	Send Jack	618112
	Return Jack	618112
	Send Level Pot	593736
		Knob 408113
	Mix Level Pot	593737
		Knob 408113
Channel Select	Rotary Sw	608226
	Knob	408111
	Foot Switch Jack	613607

Control Function	Type	Mesa Part#
External Switch (5)	Jack	618112
<b>Bias Select</b>		
Select	Switch	602000
Grn LED	LED	395550
Red LED	LED	395520
Rectifier Select	Switch	600631
Bold/Spongy	Switch	600115
<b>Fuse Holder</b>		
Domestic	Cap/Holder	790347
	Fuse	790403
Export	Cap/Holder	790346
	Fuse	795200
AC Receptacle	Jack	613713

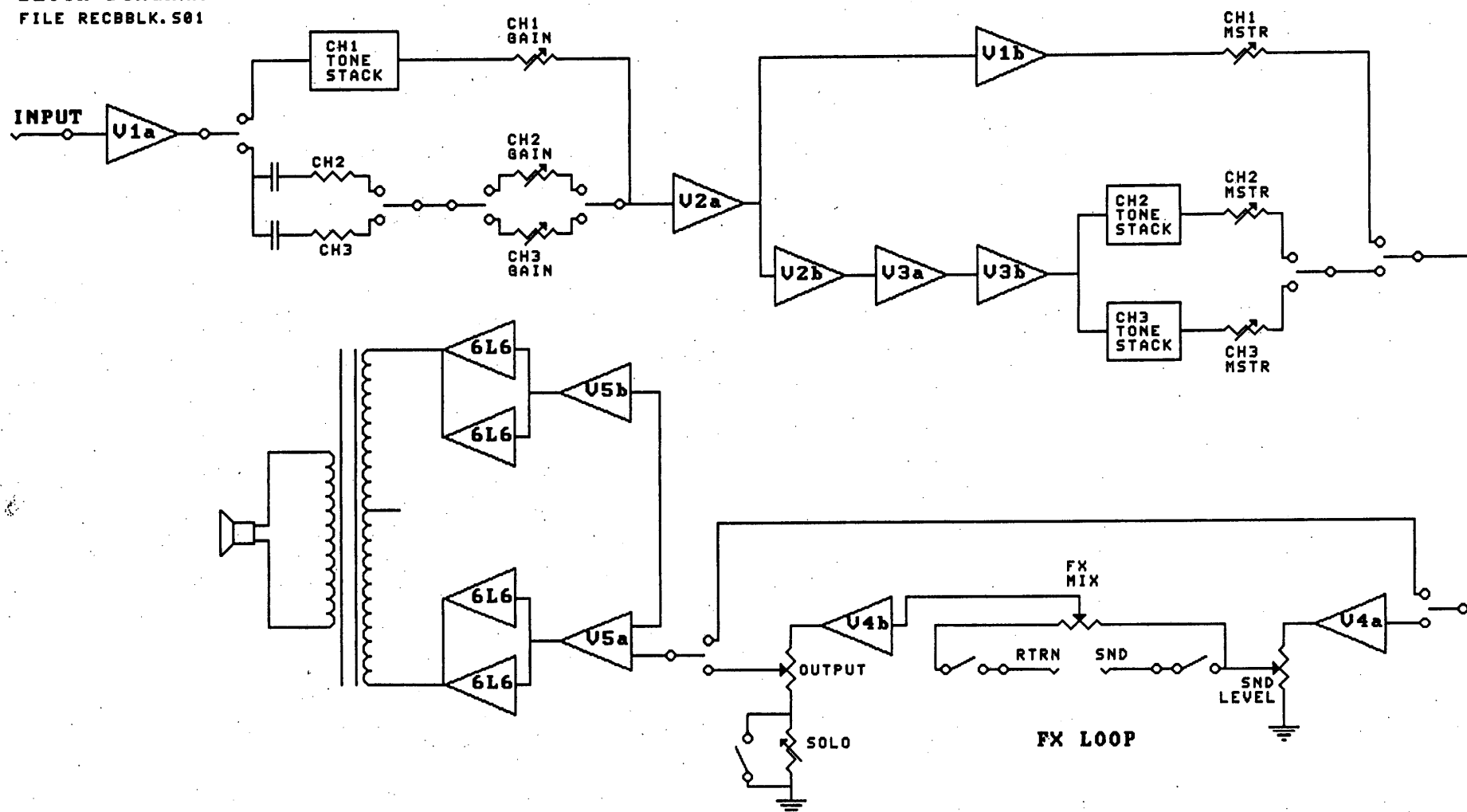
### **3 CHANNEL DUAL / TRIPLE RECTIFIER SOLO HEAD**

Control Function	Type	Mesa Part#	
Slave	Pot	592378	
	Knob	408111	
	Jack	618112	
Speaker Outs (5)	Jack	618112	
FX Loop	Assign	Rotary Sw	608110
		Knob	408111
	Send	Jack	618112
	Return	Jack	618112
	Send Level	Pot	593736
		Knob	408113
	Mix Level	Pot	593737
		Knob	408113
Channel Select	Rotary Sw	Knob	608226
		Knob	408111
	Foot Switch	Jack	613607

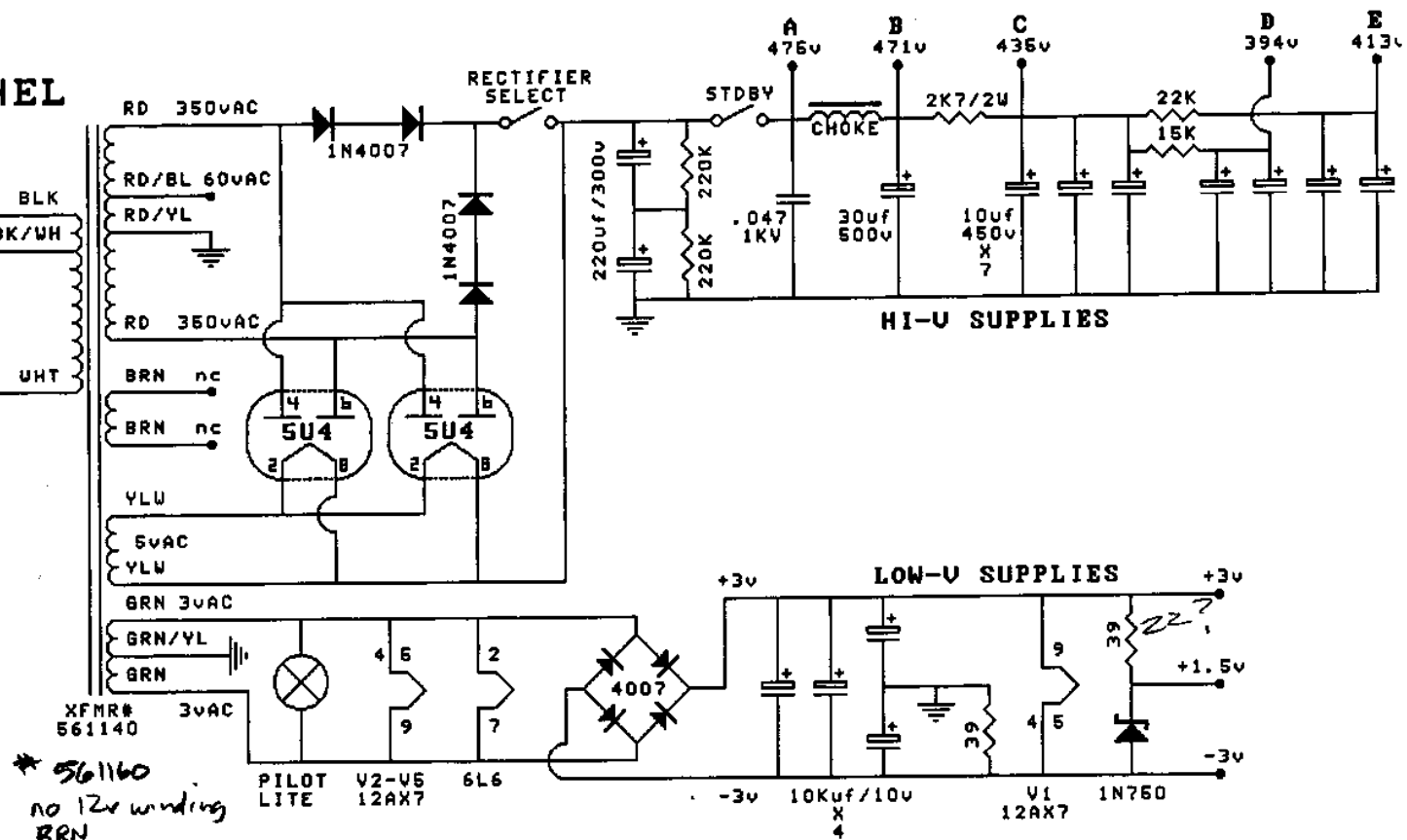
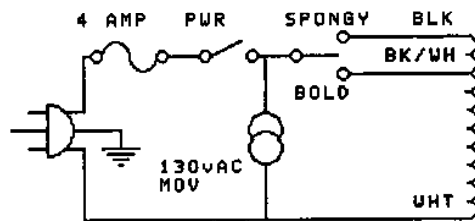
Control Function	Type	Mesa Part#
External Switch (5)	Jack	618112
<b>Bias Select</b>		
Select	Switch	602000
Grn LED	LED	395550
Red LED	LED	395520
Rectifier Select	Switch	602112
Bold/Spongy	Switch	600115
<b>Fuse Holder</b>		
Domestic	Cap/Holder	790347
	Fuse	790403
Export	Cap/Holder	790346
	Fuse	795200
AC Receptacle	Jack	613713

# MESA-BOOGIE DUAL RECTIFIER 3 CHANNEL

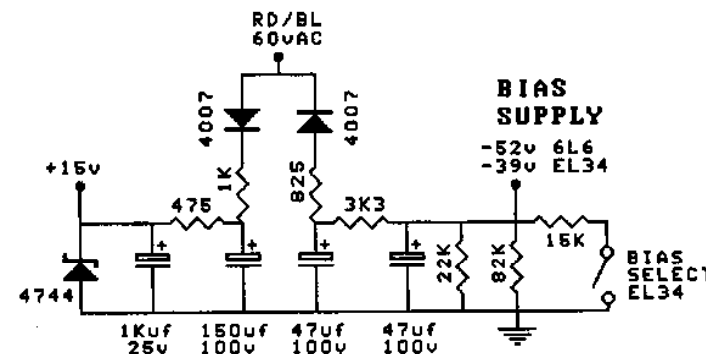
BLOCK DIAGRAM  
FILE RECBBLK.S01



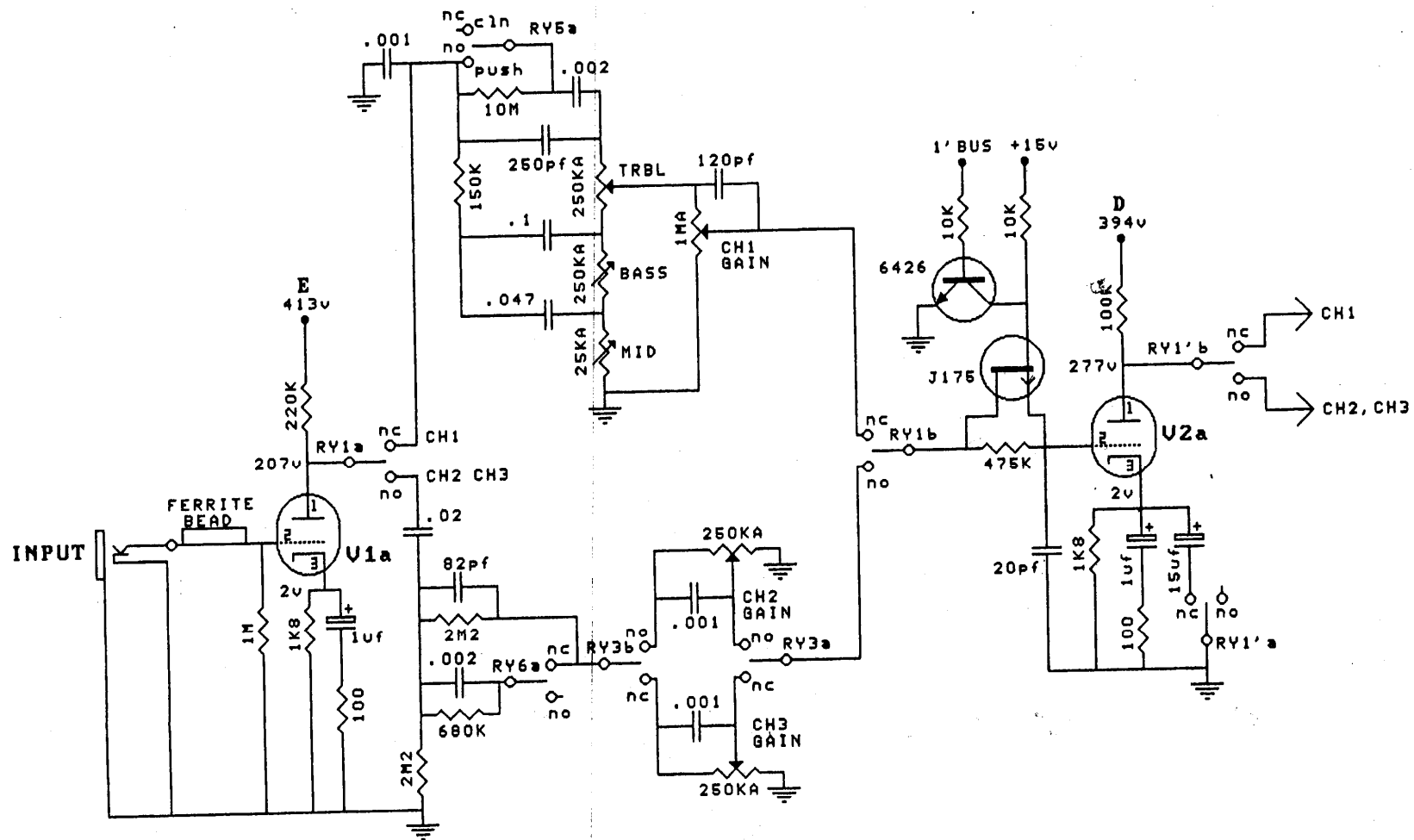
# MESA-BOOGIE DUAL RECTIFIER SOLO HEAD 3 CHANNEL POWER SUPPLIES FILE RECBSUPP. 501



\* 561160  
no 12v winding  
BRN  
BRN  
less cap in spongy  
# 561161  
x-port version



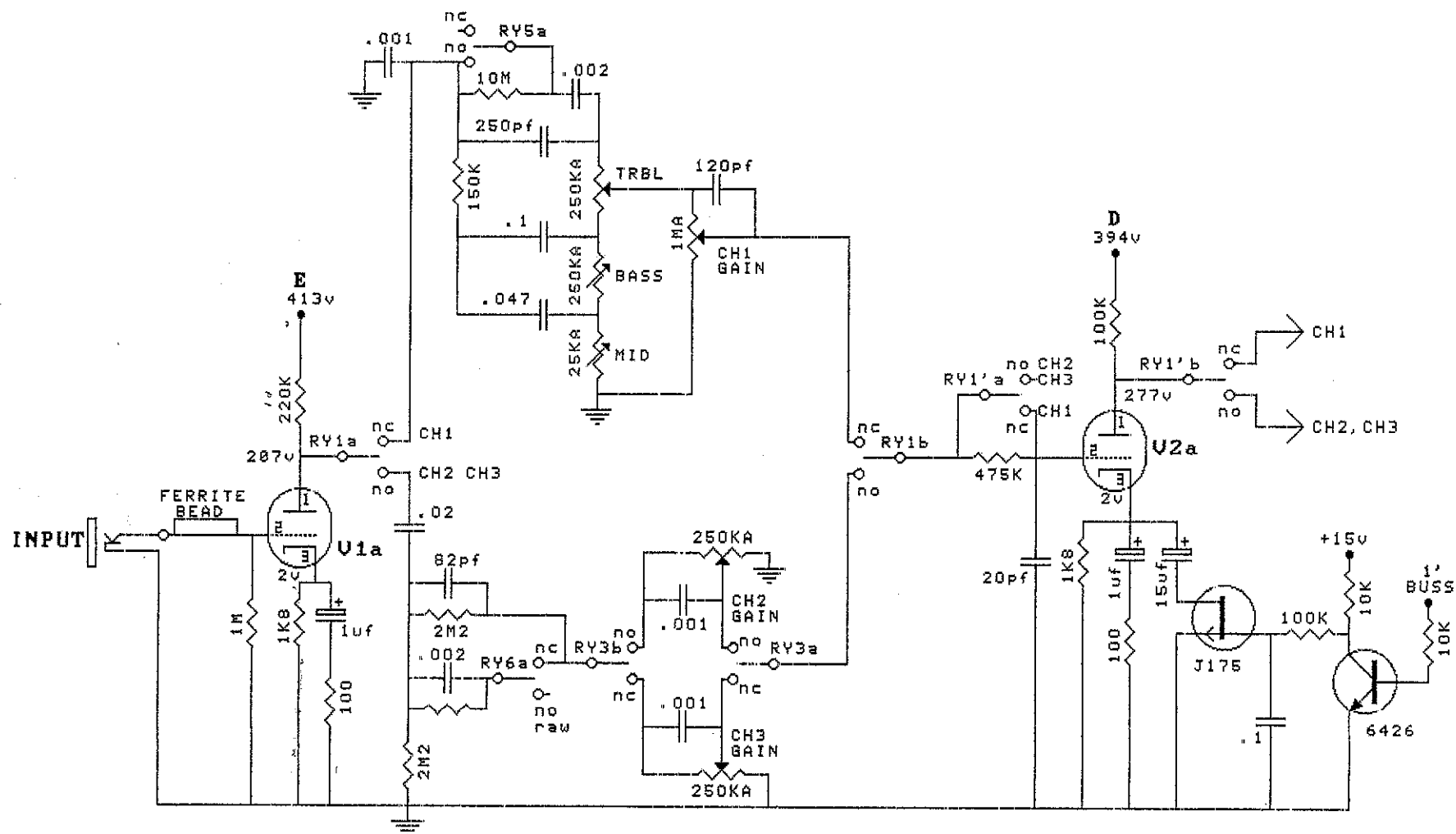
PREAMP PT1  
FILE RECBPR1.S01



```

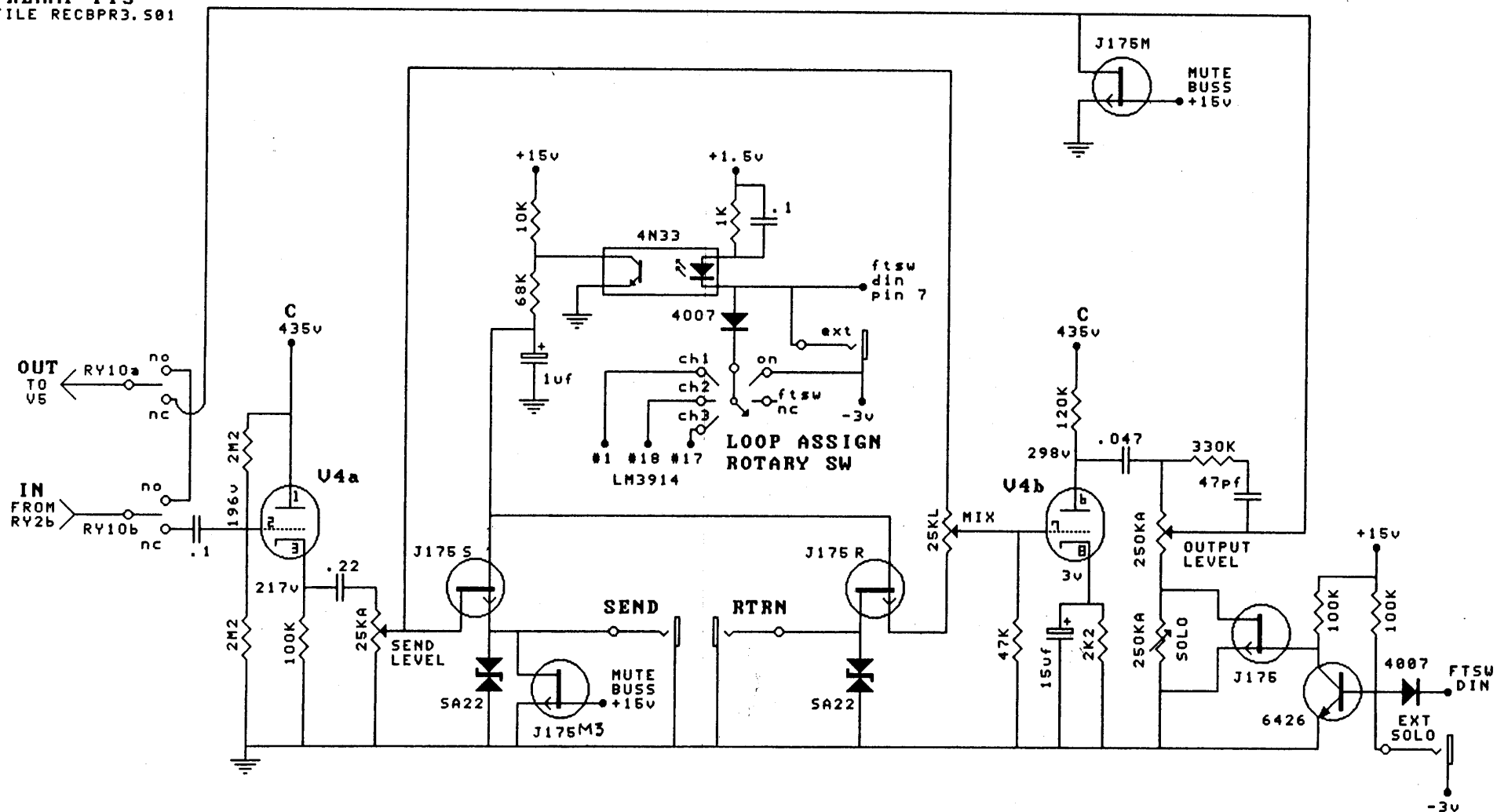
PREAMP PT.1
REVISION 3RECD
FILE RECBPRIA.S01

```



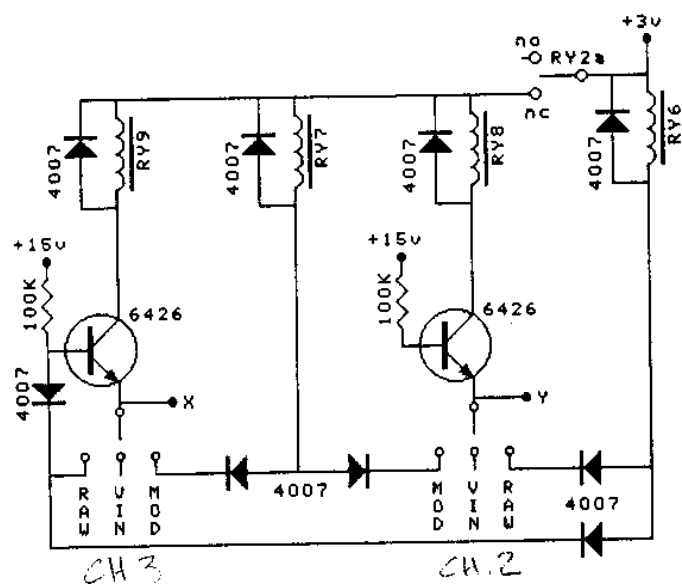


PREAMP PT3  
FILE RECBPR3.S01

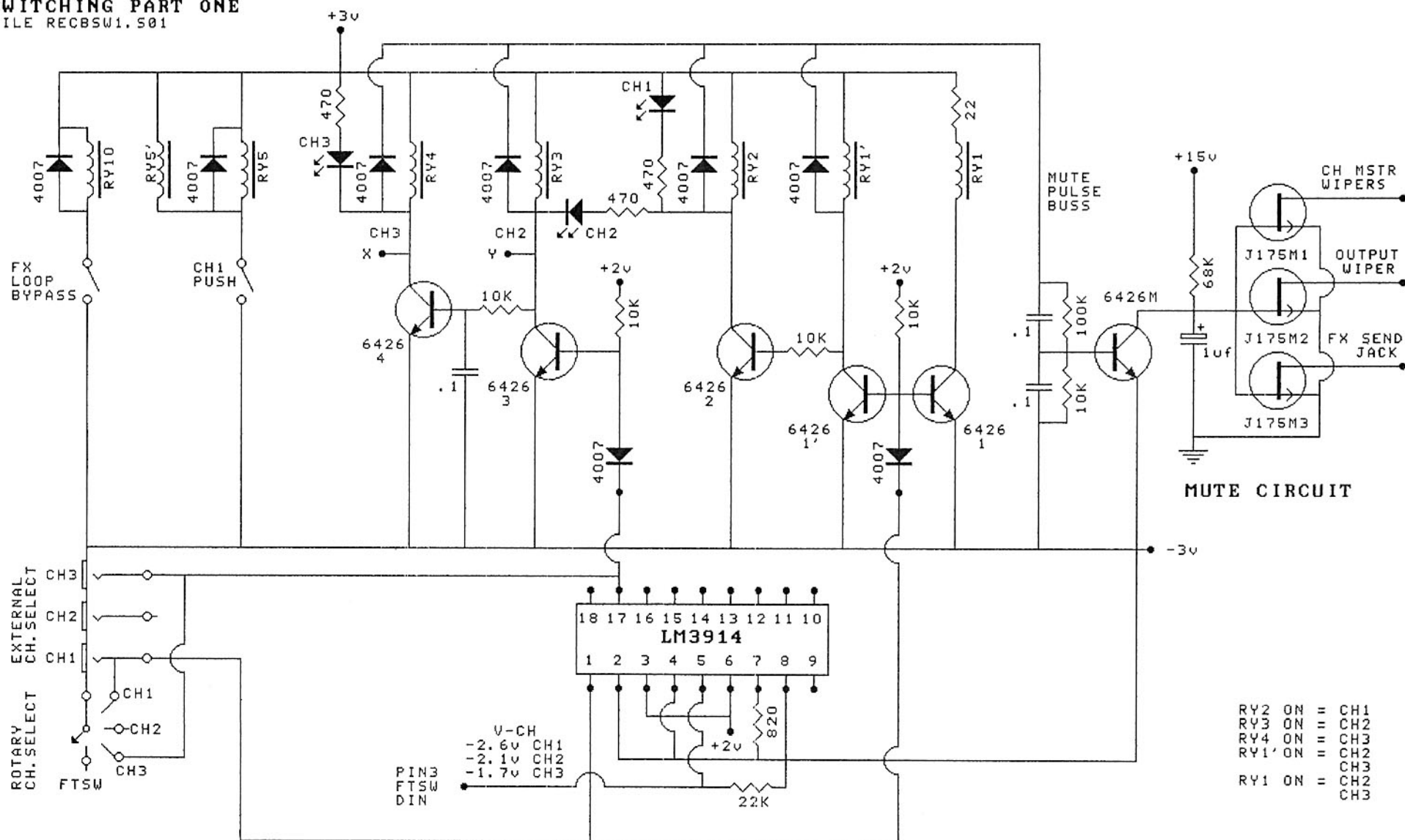


MESA-BOOGIE  
DUAL RECTIFIER  
SOLO HEAD 3CHANNEL

FILE RECB5W2.501



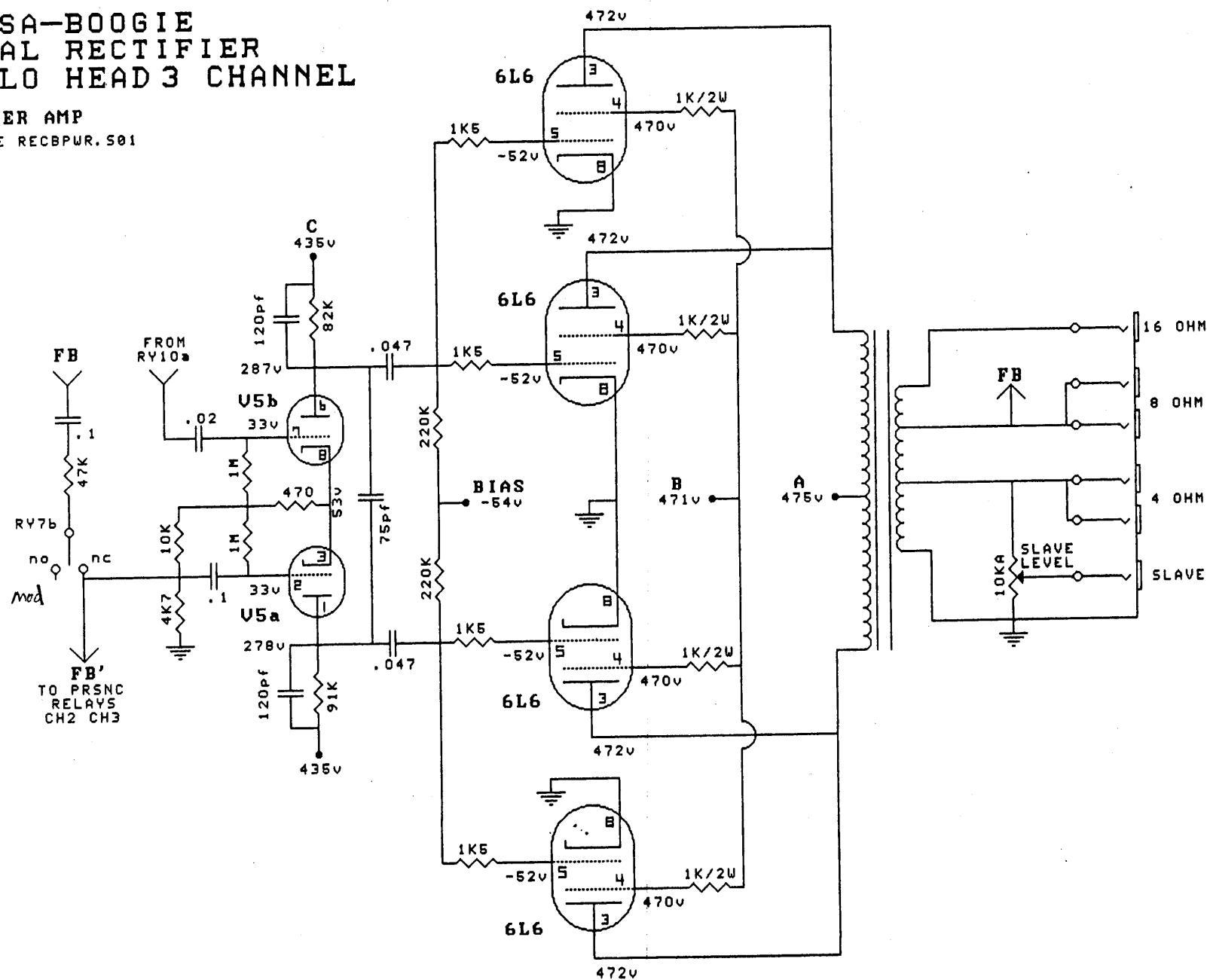
SWITCHING PART ONE  
FILE RECBSW1.501



# MESA-BOOGIE DUAL RECTIFIER SOLO HEAD 3 CHANNEL

POWER AMP

FILE RECBPUR.501



## Regarding "Channel Switch Pop" in 3-Channel Dual & Triple Rectifiers

A certain amount of 'pop' or 'thump' is normal during channel switching. Especially when Ch 2 and 3 are set to Modern. Under normal playing conditions, this slight pop is masked by the guitar signal level.

However, if this 'pop' seems excessive compared to other same-model amplifiers, check the following:

1. Mute circuit J-FET'S. There are three of these in the signal chain. See that the gate voltage is momentarily dipping low at the instant of switching to Mute signal path.
2. Look for any amount of DC leakage onto V2A grid from the J-FET that is bypassing the 475K series resistor.

Mesa Boogie  
Service Dept.

## Rectifier FU-2 Bigfoot conversion mod.

This modification is for Rectifier FU2 series footswitch boards. Modification will solve “No FX loop at footswitch” You will need a Philips head screw driver, soldering iron, solder, and two ½” pieces of insulated wire.

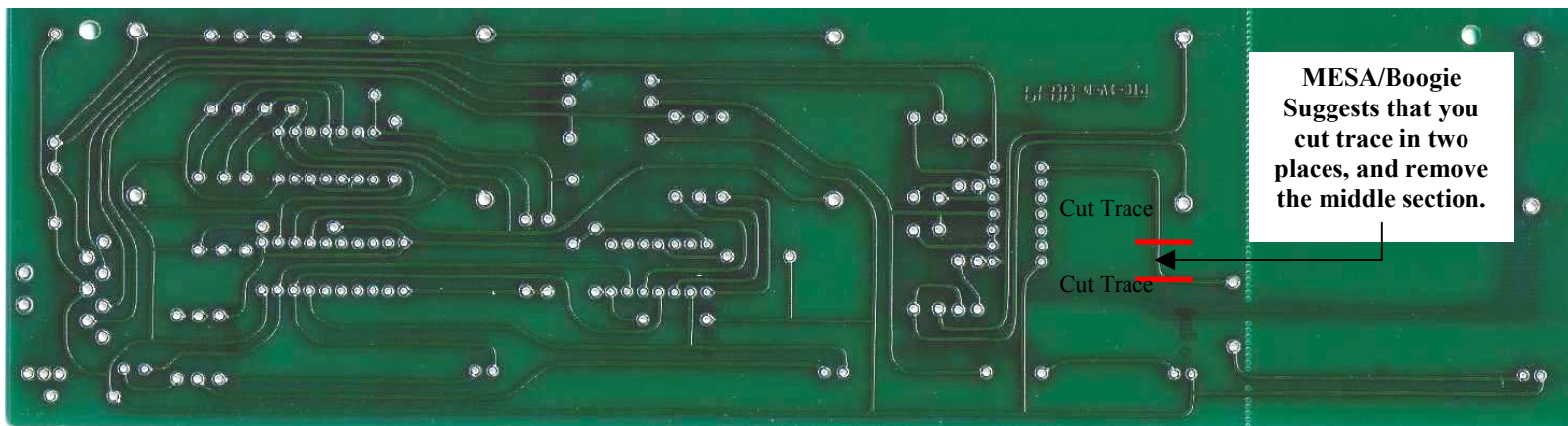
First, remove the plastic side of the footswitch with the din jack, by unscrewing the four screws located in each corner.



Foot switch PC board is mounted to the front panel of the foot switch. After removing the side panel, slide out the front panel as shown below.

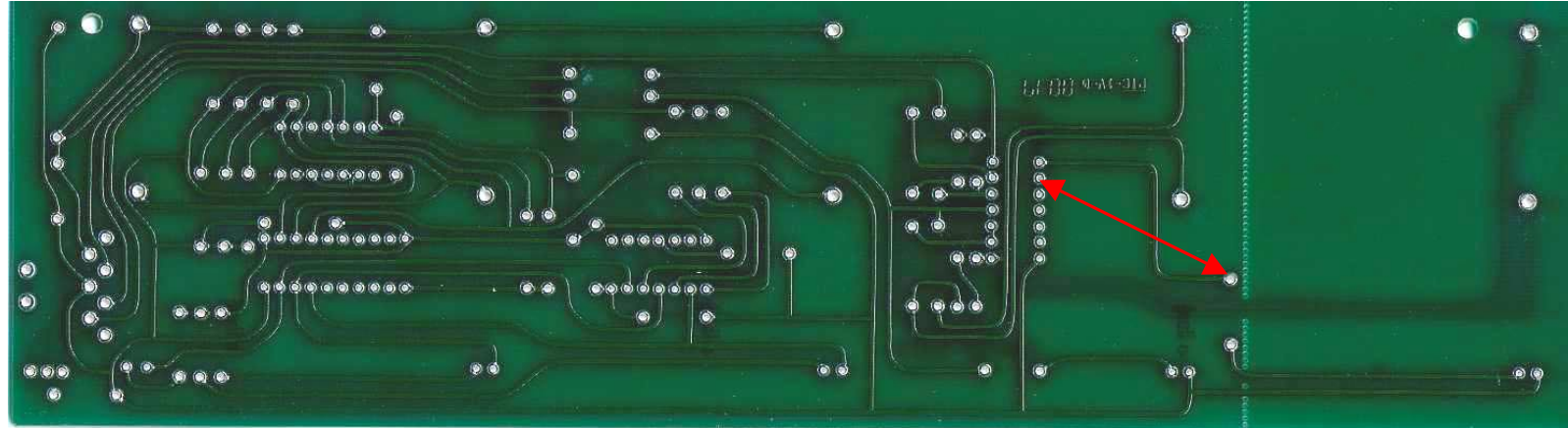


Flip over the panel, exposing the backside of the PC board, and cut the trace from pin 8 of the 74HCT14 IC to the 470  $\Omega$  1/4watt resistor.

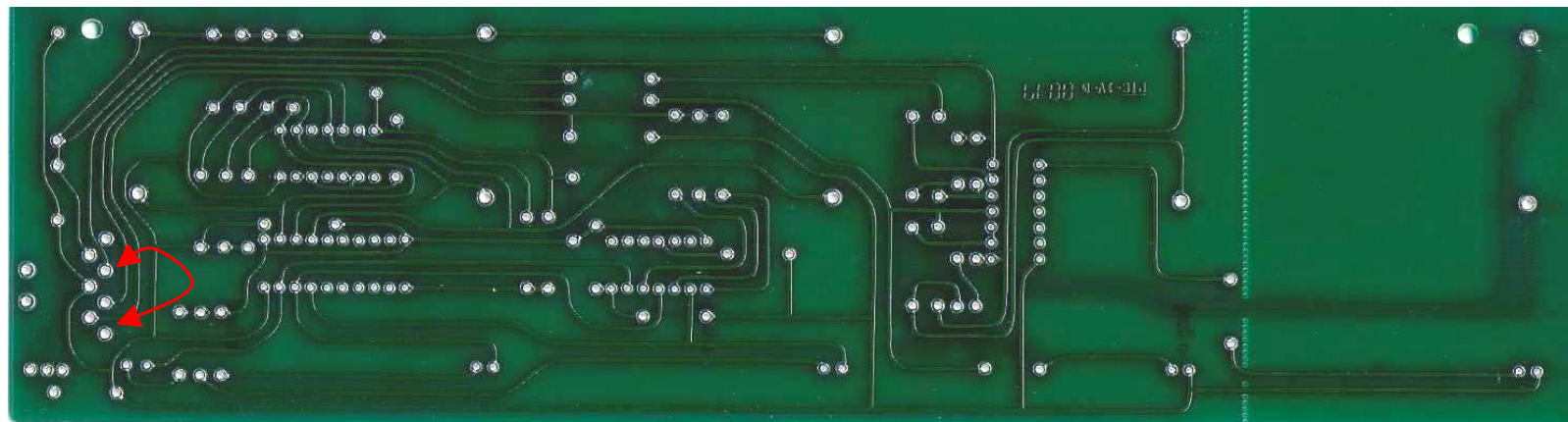


## Rectifier FU-2 Bigfoot conversion mod.

Install a jumper wire from 470  $\Omega$  resistor to pin 9 of the 74HCT14 IC



Install a jumper wire between SWB(4) pad and SWB(7) pad at foot switch cable connector.



Once complete, reassemble footswitch in the opposite order it was opened.

## Spongy mod

After removing the amplifier chassis from cabinet, locate the bold spongy switch on the behind the power Transformer. All you should need to complete this mod is a soldering iron and a small amount of solder.

1. Find the black wire on the switch that is connected to the bold side of switch, as circled below.
2. Now heat up the end that is connected to T2 (RED) on the power tube PC board and remove it.
3. Pull the unattached wire under the PC board and re-attach it over the top to T1 (orange).

