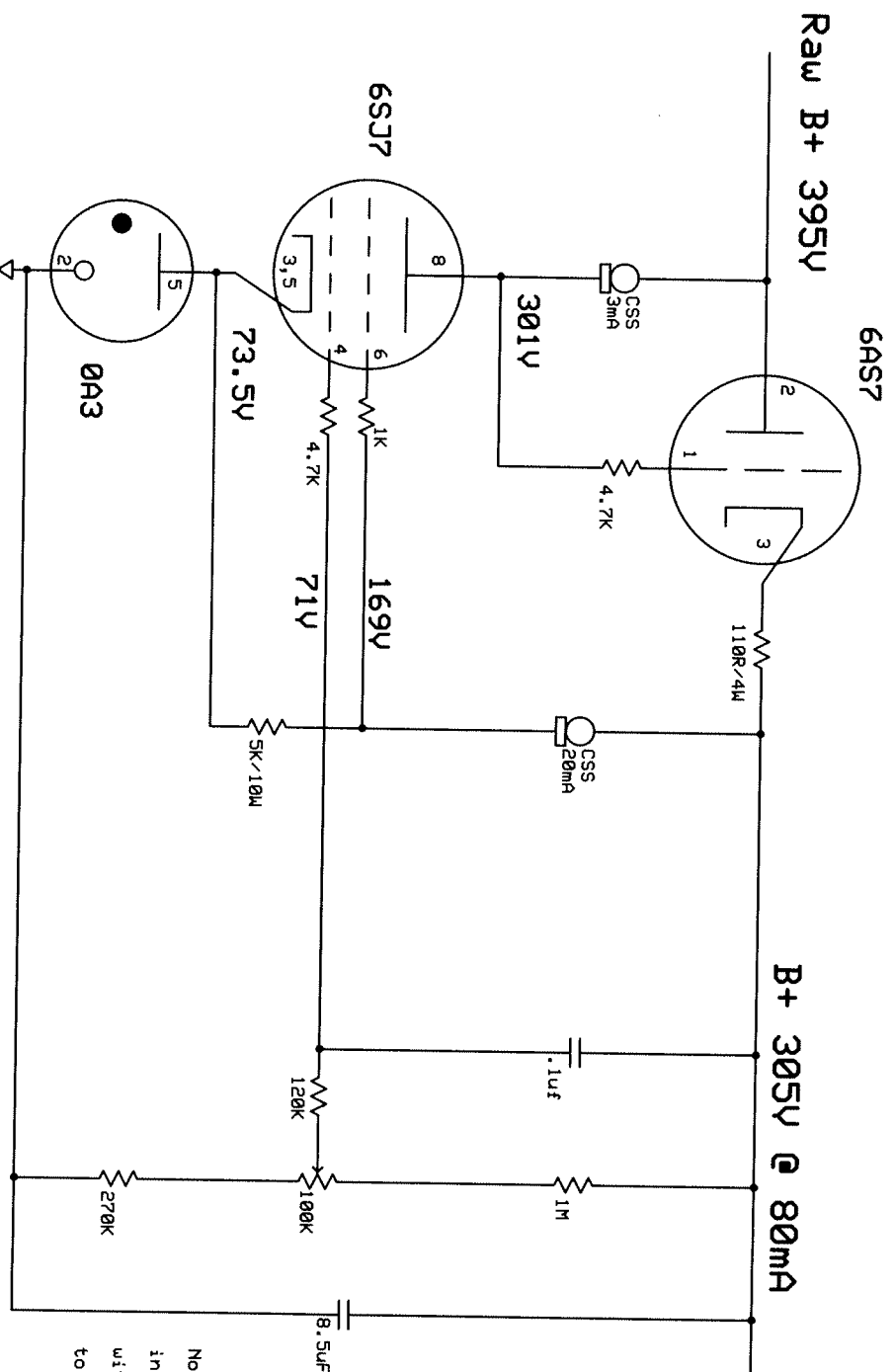
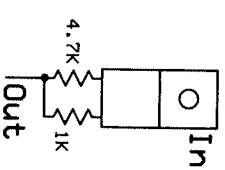


# 3mA CCS Pentode; 20mA CCS 0A3 G2 via voltage divider to 0A3 For single section test, Goal 305V @ 80ma



1K = 3mA  
100R = 20mA



Note: 6AS7 and 6SJ7 filaments  
in parallel on a 6.3V 2.5A trans  
with the center tap biased up  
to 75V from pin 5 of the 0A3

Company Name	
Schematic Name	
Designer's name	Rev 1.0
10/27/2009	Page # or name