

Technical Manual

JBL2405H

SPECIFICATIONS



ACOUSTIC & ELECTRICAL SPECIFICATIONS:

- Nominal Impedance: 8 ohm
- Power Capacity: 40W Continuous Program Above 6 kHz
- Frequency Range: 6.5 kHz to 21.5 kHz (-10 dB)
- Sensitivity: 105 dB SPL*
- Crossover Frequencies: 7 kHz or Higher, 12 dB Octave Minimum

SYSTEM COMPONENTS:

- Cabinet: N/A
- Grille: N/A
- Ultra-High Transducer: 44mm (1-3/4 in.) Aluminum Diaphragm (2405H)
- DC Resistance: 6.25 ohm $\pm 8\%$ Aluminum Wire

AURAL SWEEP TEST SPECIFICATIONS:

- A. H.F. Aural Sweep Test: 1.0V Input, 1.0 kHz to 20.0 kHz

PHYSICAL SPECIFICATIONS:

- Enclosure Dimensions: 121mm x 121mm x 95mm D (4.75 x 4.75 x 3.75 in. D)
- Shipping Weight: 5-3/4 lbs. (2.6 kg.)

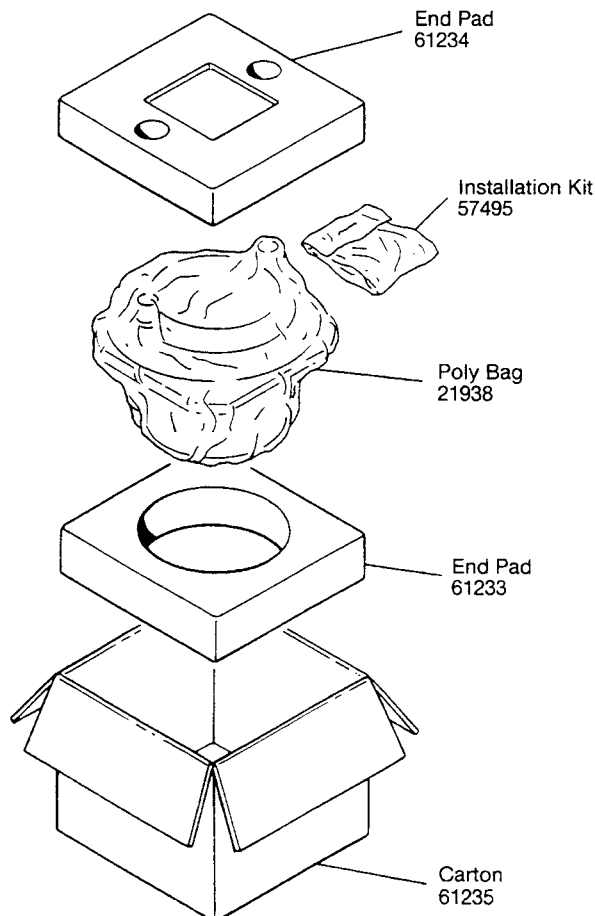
WARRANTY INFORMATION:

- Refer to the Warranty Statement packed with each product.

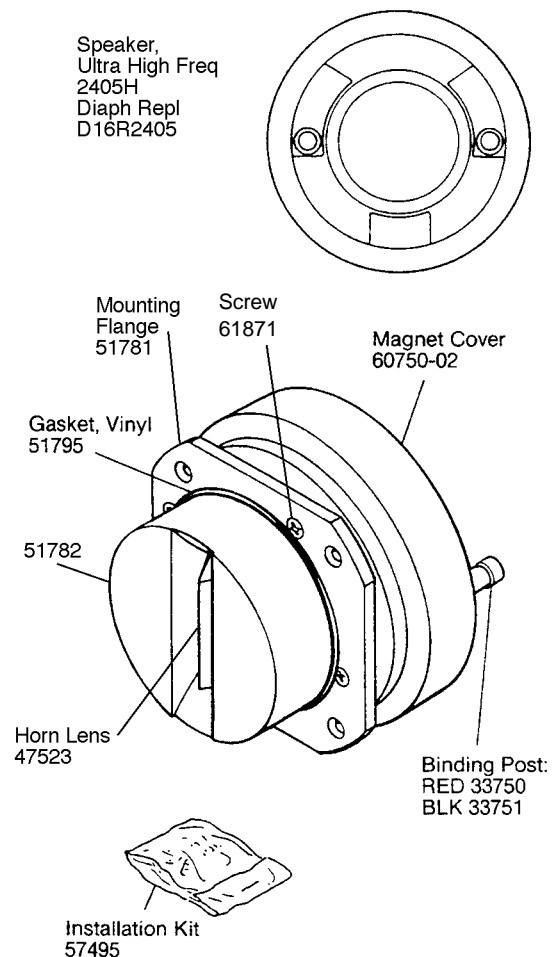
*1 Watt (2.83 V RMS) @ 1 Meter

PACKAGE

Warranty 59660
Specification Sheet 73480



COMPONENT VIEW

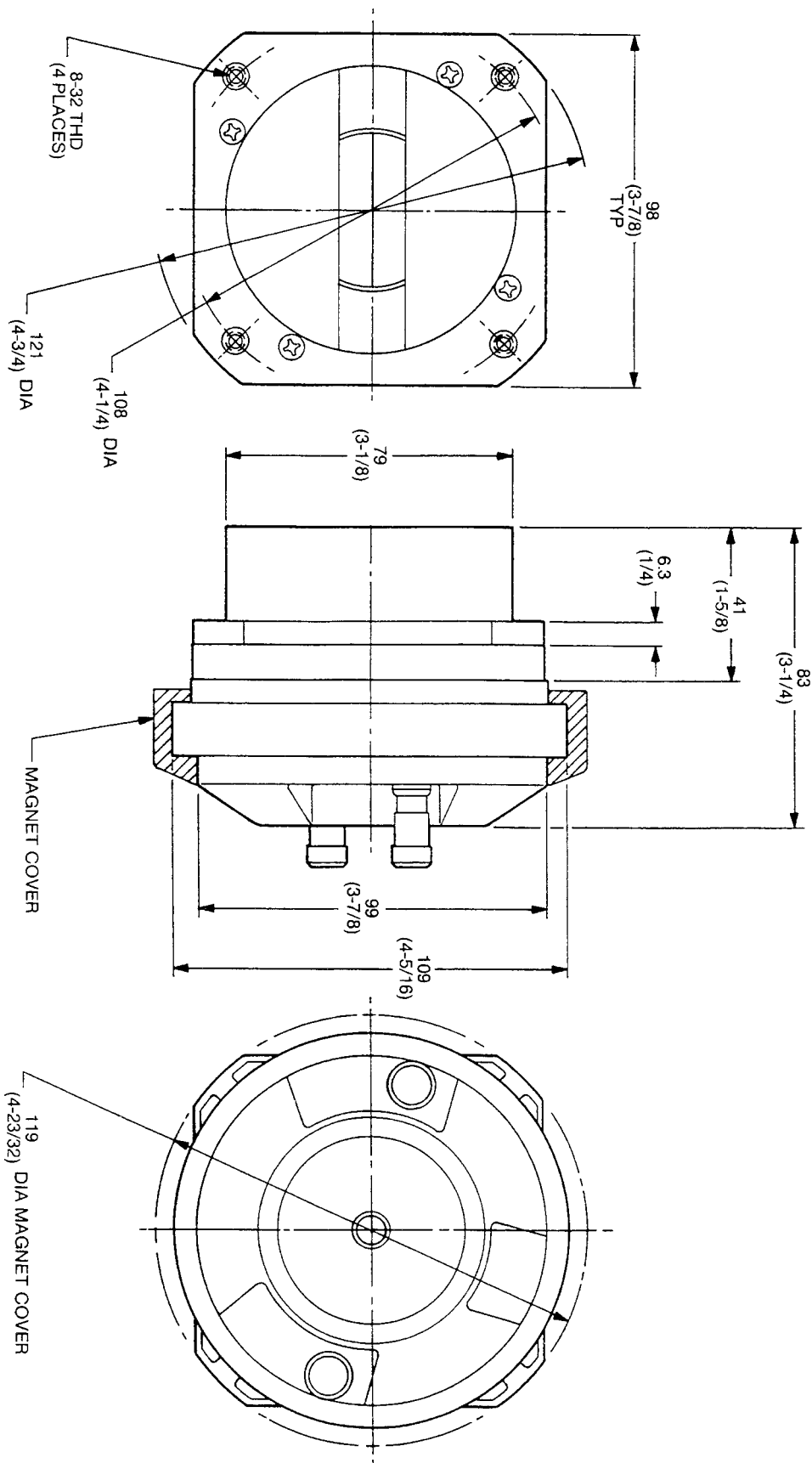


NOTE: POSITIVE VOLTAGE TO BLACK TERMINAL GIVES FORWARD DIAPHRAGM MOTION.

JBL 2405H

MECHANICAL DRAWING

THESE DRAWINGS AND SPECIFICATIONS ARE THE PROPERTY OF JBL INCORPORATED. THEY ARE ISSUED IN STRICT CONFIDENCE AND SHALL NOT BE REPRODUCED, COPIED, OR USED AS THE BASIS FOR MANUFACTURE OR SALE OF APPARATUS WITHOUT WRITTEN PERMISSION.



ALL DIMENSIONS ARE REF. ONLY
NOTE: DIMENSIONS IN () ARE IN INCHES