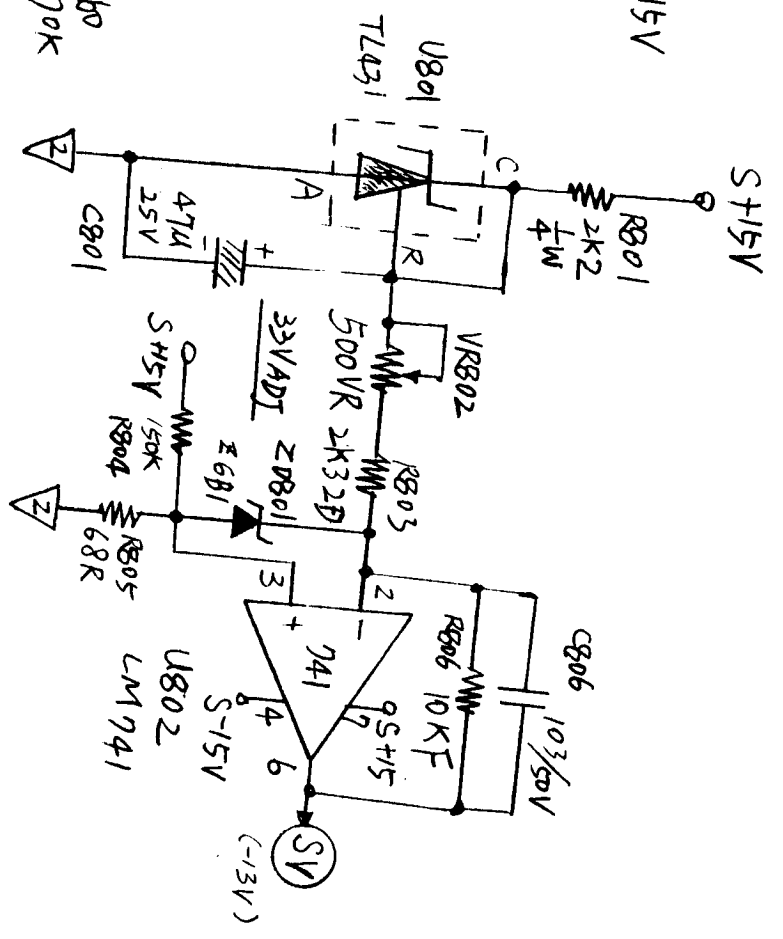
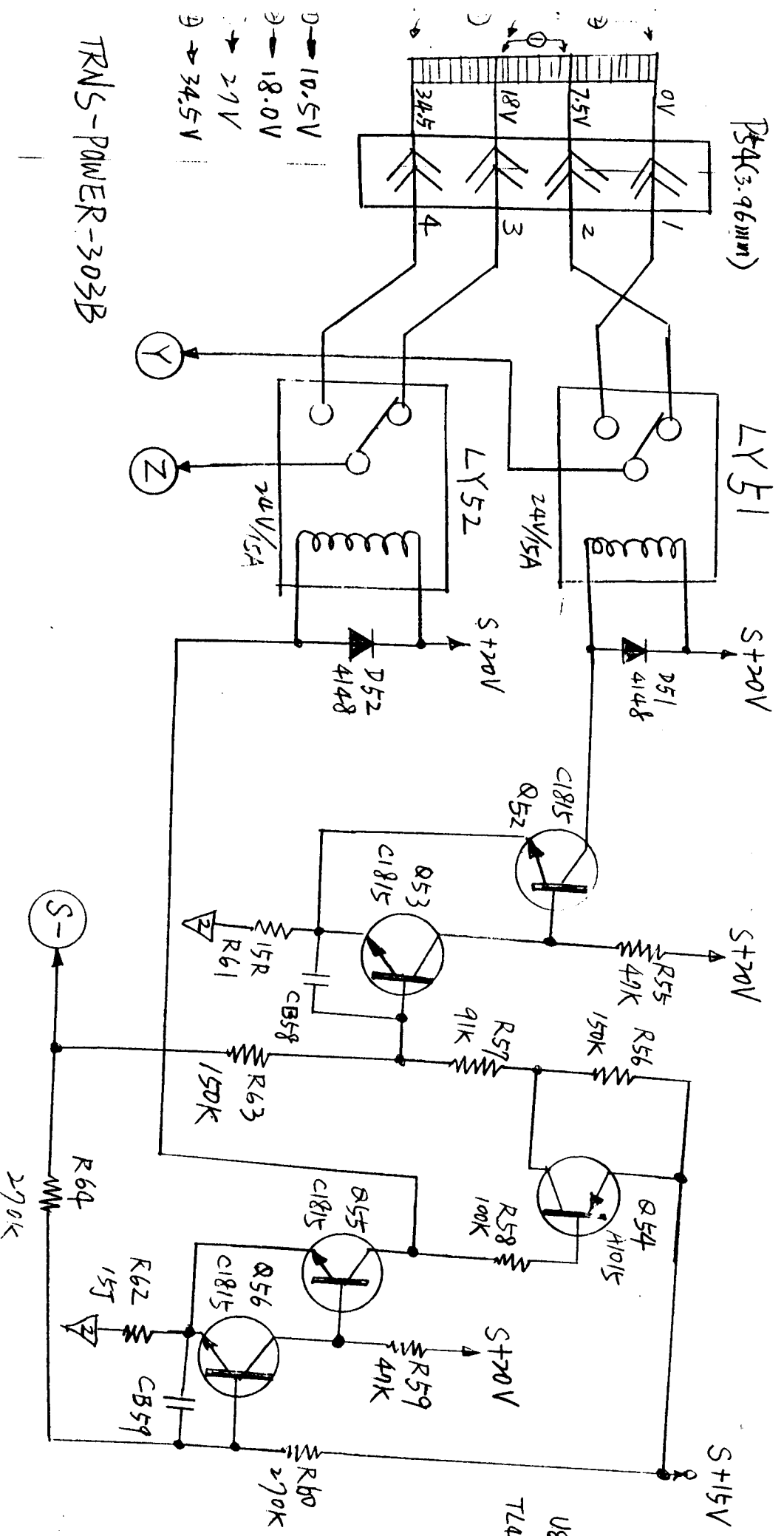
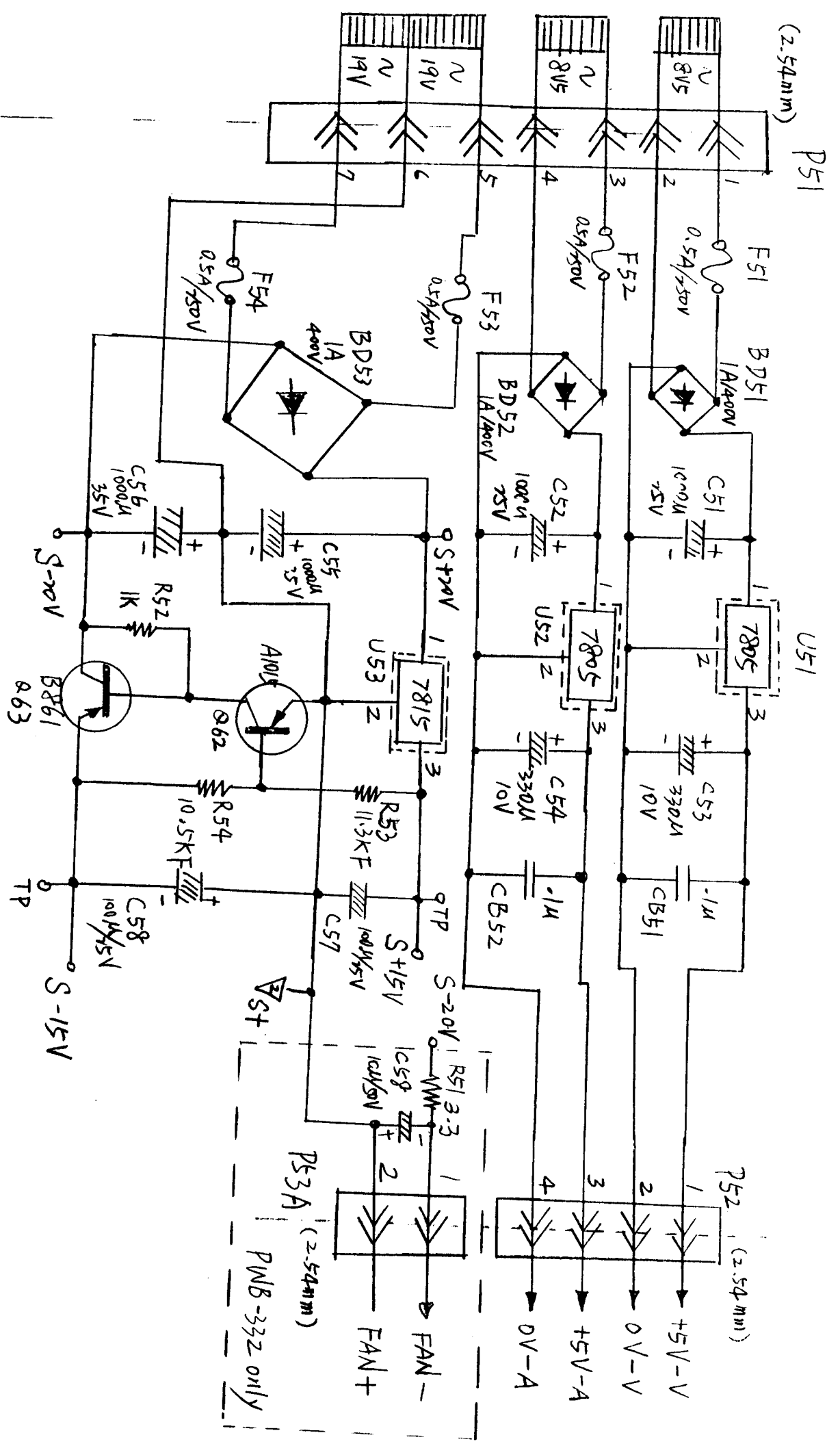


PW-3033	New circuit	PW-3314
PW-3032	New circuit	PW-321

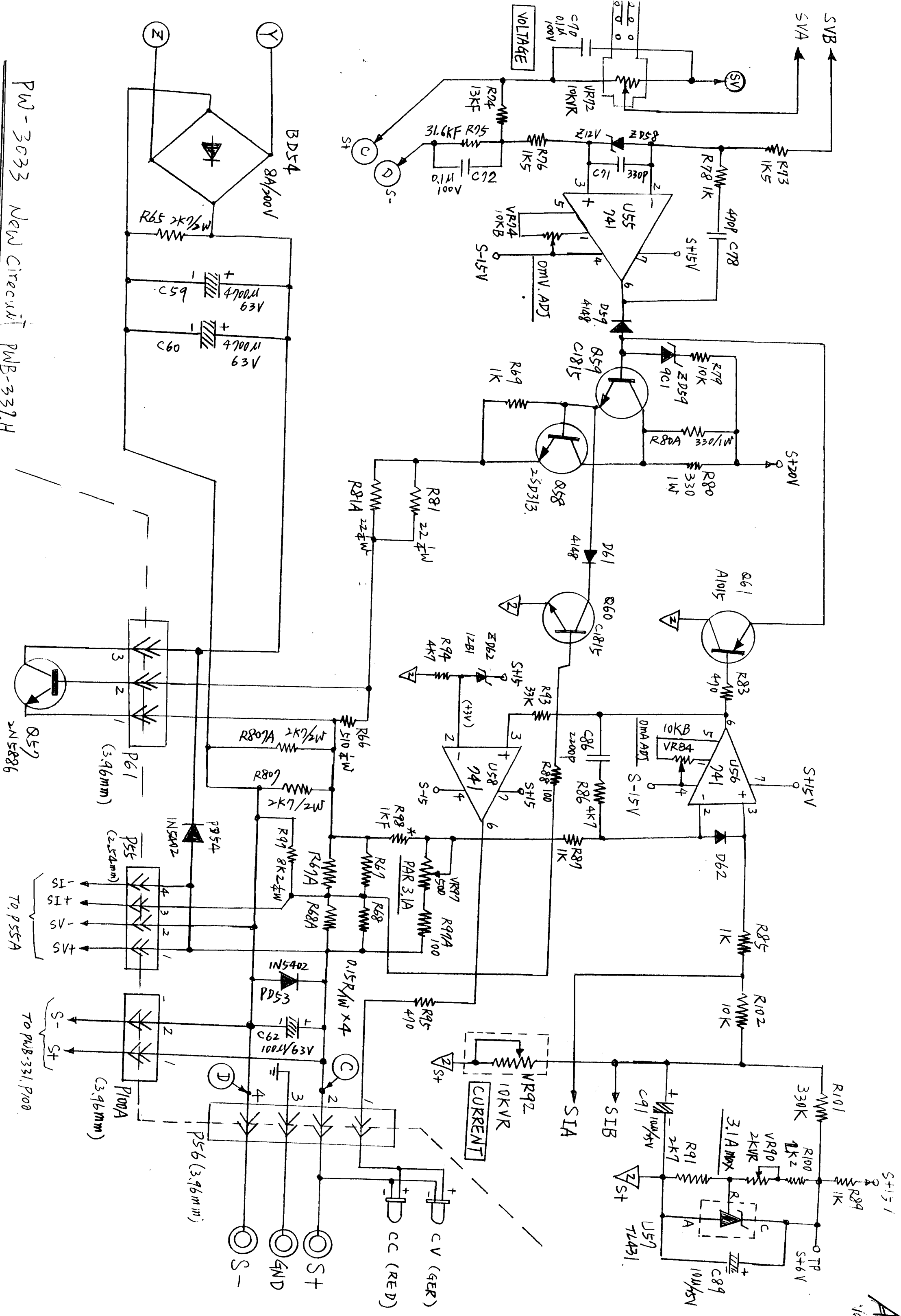
4211



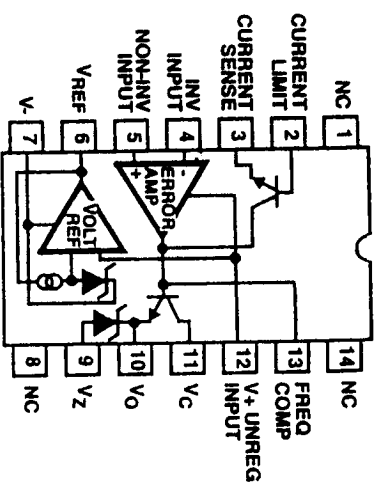
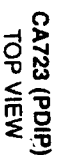
PN-3033 New circuit PN-332H

TRANS-POWER-303B

PW-3033 New circuit PWB-332H



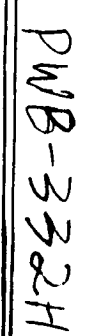
No Load : +5.08V



2004. 7月30日 新版

PMB-332 DEL TAKING DE POTES TALL
PMB-331 PMB-33/H

421-3



SEP. 14. 2004 New Circuit