

## Operating Conditions

### 12AT7

$V_{ak} = 128V$

$I_a = 2.2mA$

$V_g = -2.0V$

### 6N6P

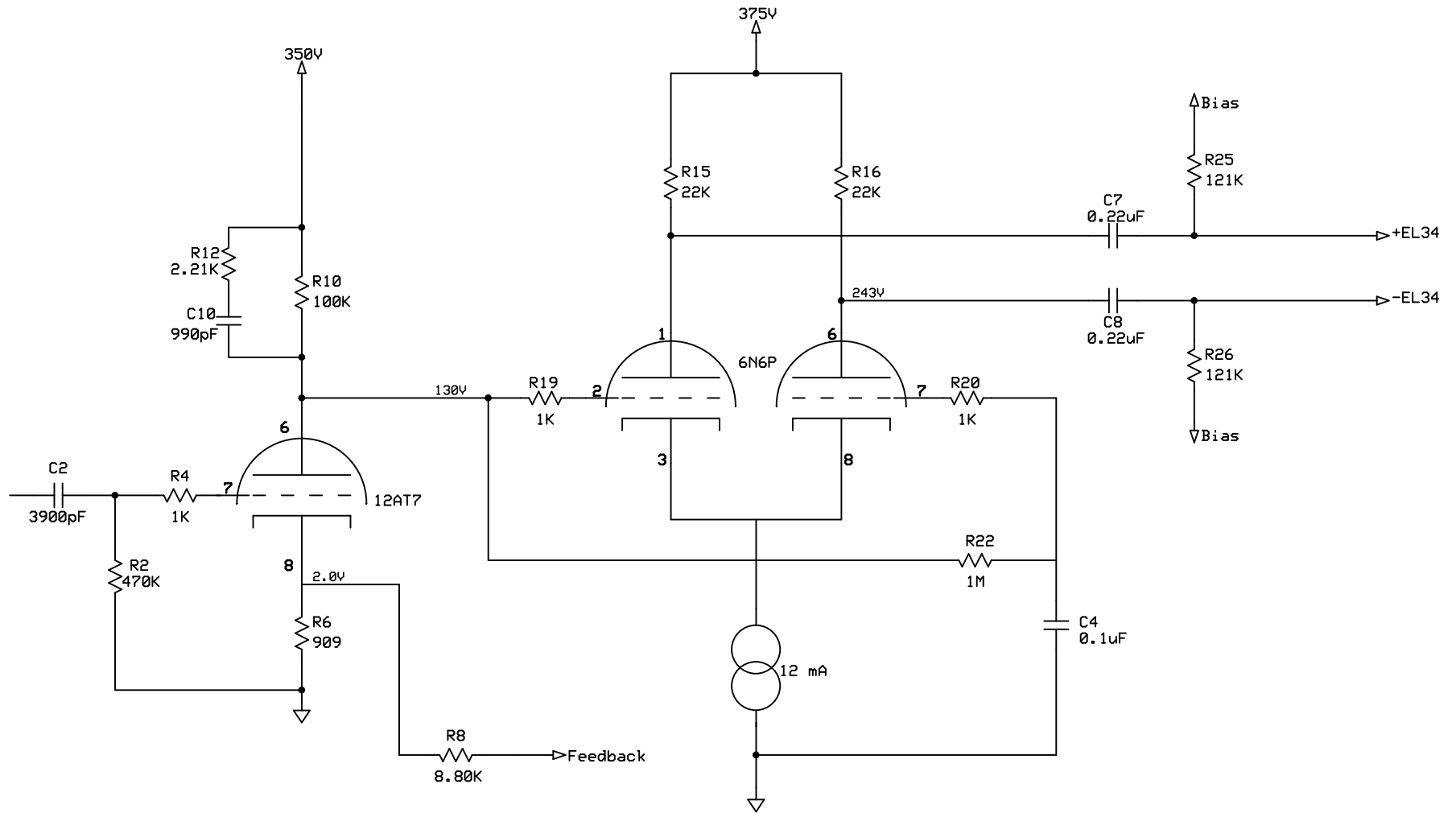
$V_{ak} = 108V$

$I_a = 6.0mA$

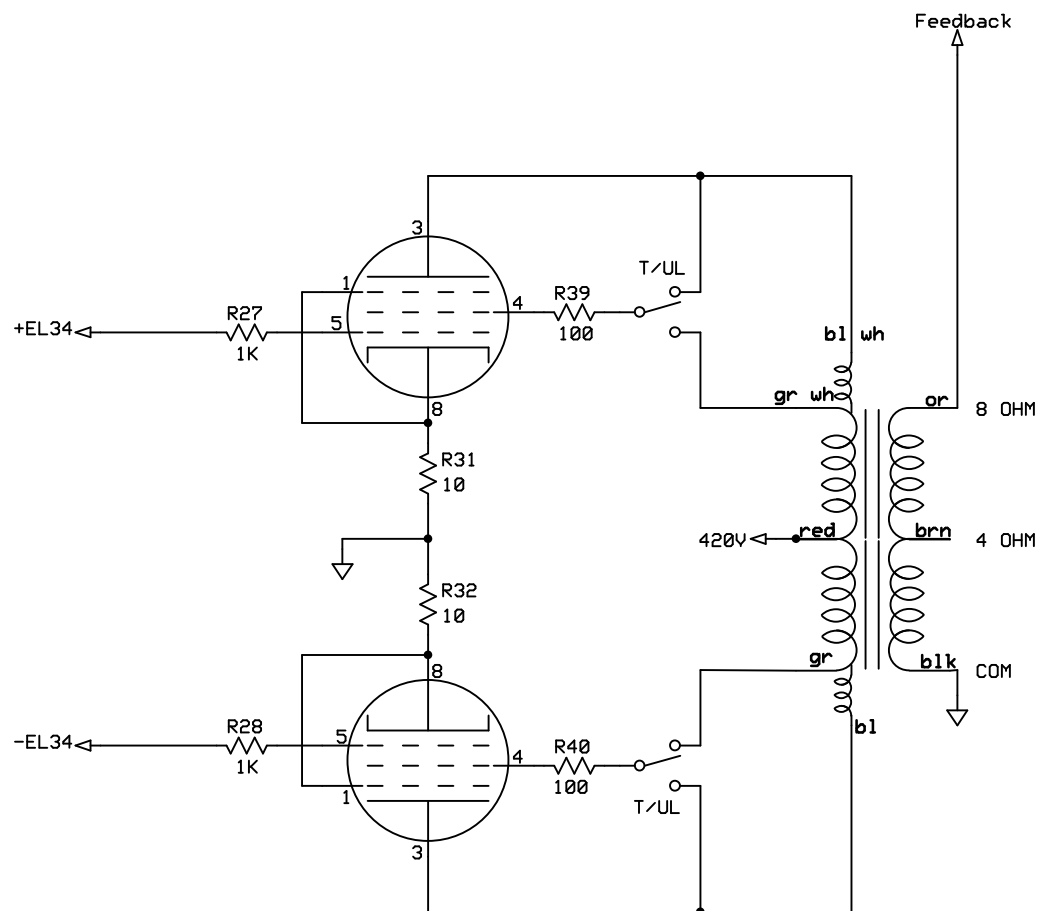
$V_g = -4.75V$

$R_p = 3k$

10W EL34 Push Pull		
Input/Driver Left Channel		
Kurt Poeschl	Rev 1.1	Page 1 of 6
	5/15/2009	



10W EL34 Push Pull		
Input/Driver Right Channel		
Kurt Poeschl	Rev 1.1	Page 2 of 6
	5/15/2009	



10W EL34 Push Pull

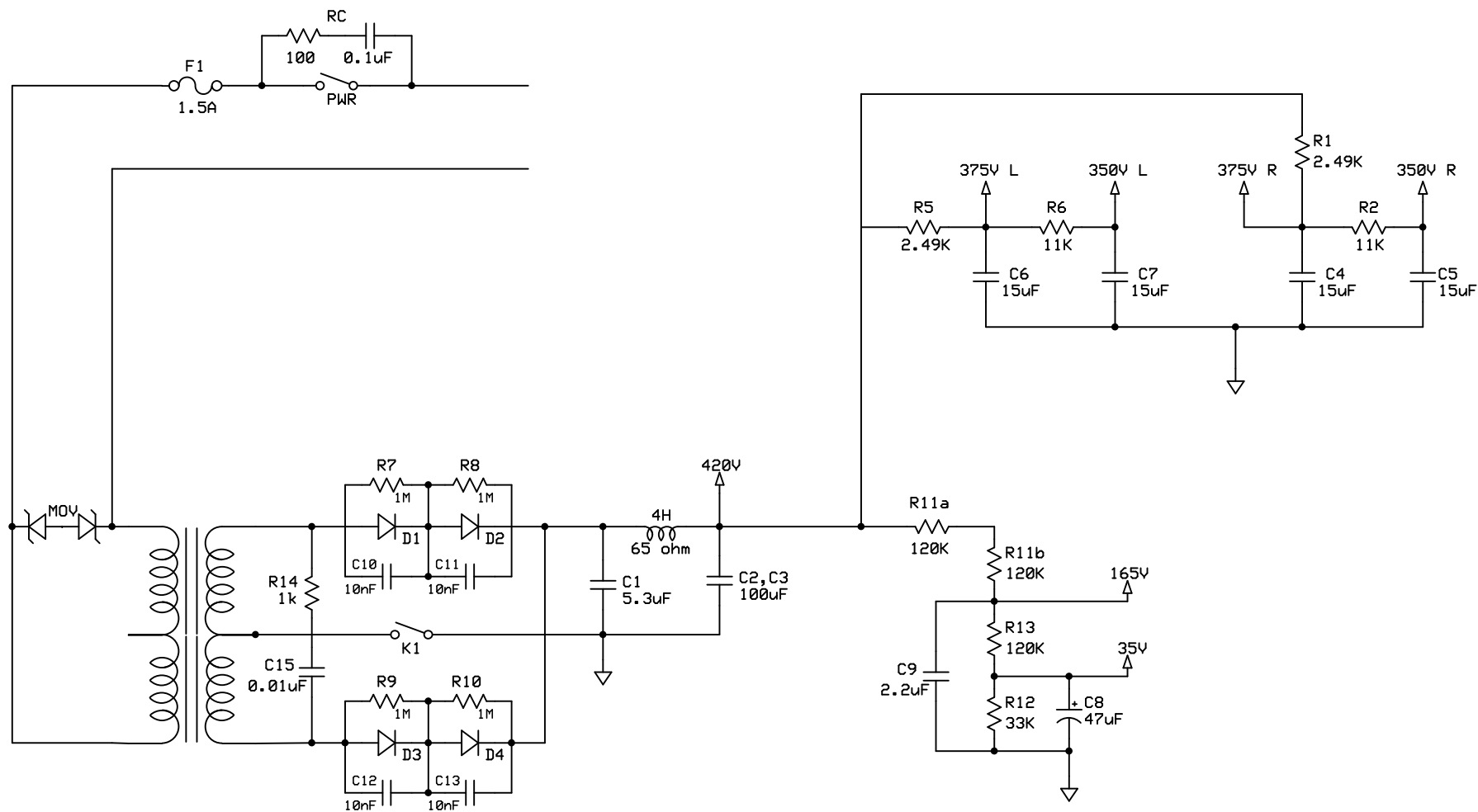
Output Stage

Kurt Poeschl

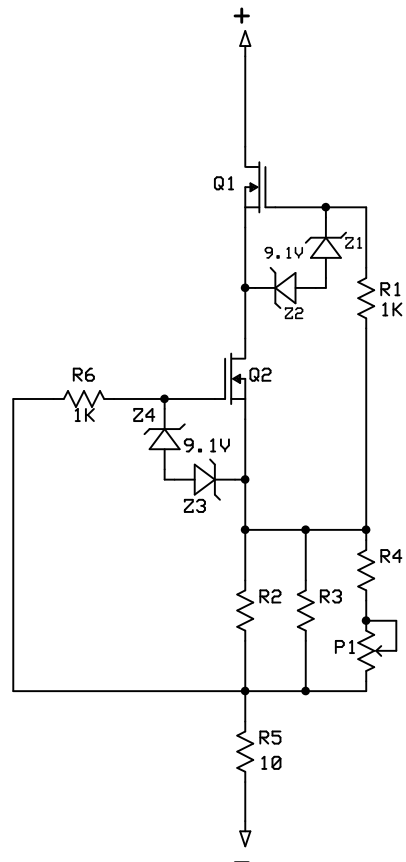
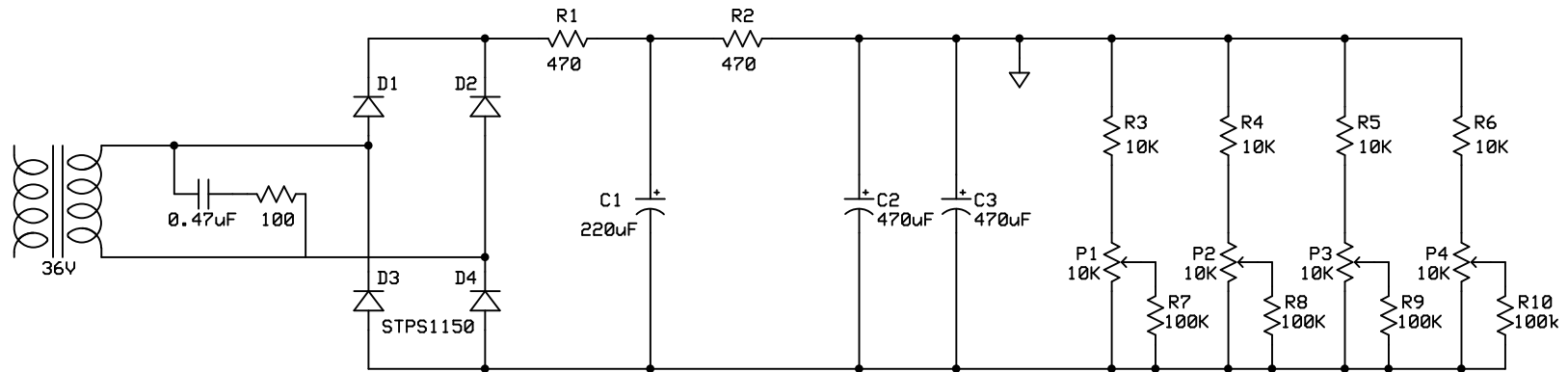
Rev 1.1

5/15/2009

Page 3 of 6



10W EL34 Push Pull		
Power Supply		
Kurt Poeschl	Rev 1.1	Page 4 of 6
	5/15/2009	



10W EL34 Push Pull

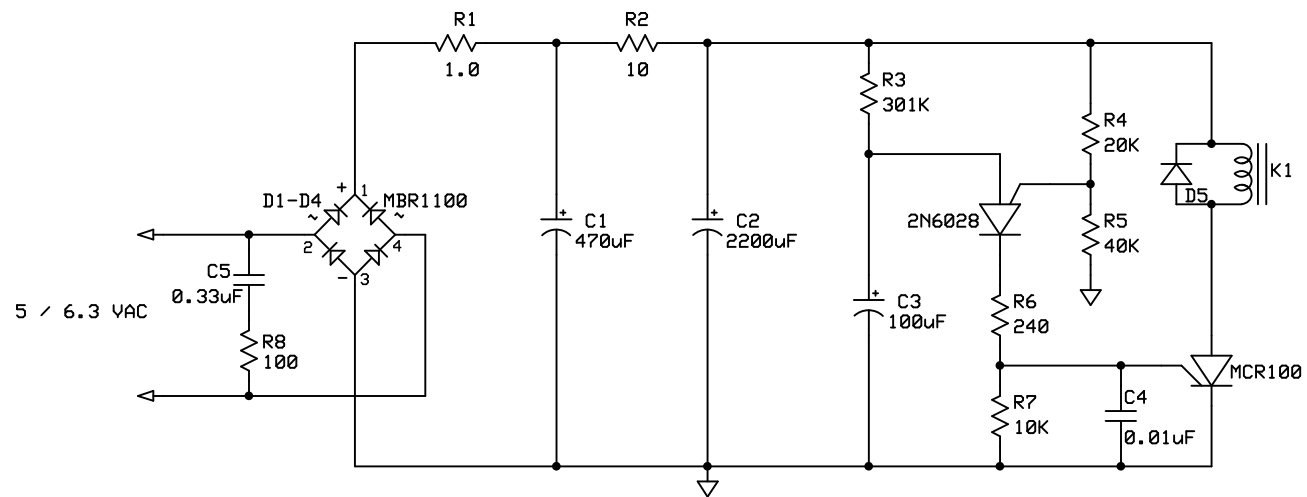
Bias Supply / CCS

Kurt Poeschl

Rev 1.1

5/15/2009

Page 5 of 6



10W EL34 Push Pull

Timer Module

Kurt Poeschl

Rev 1.1

5/15/2009

Page 6 of 6