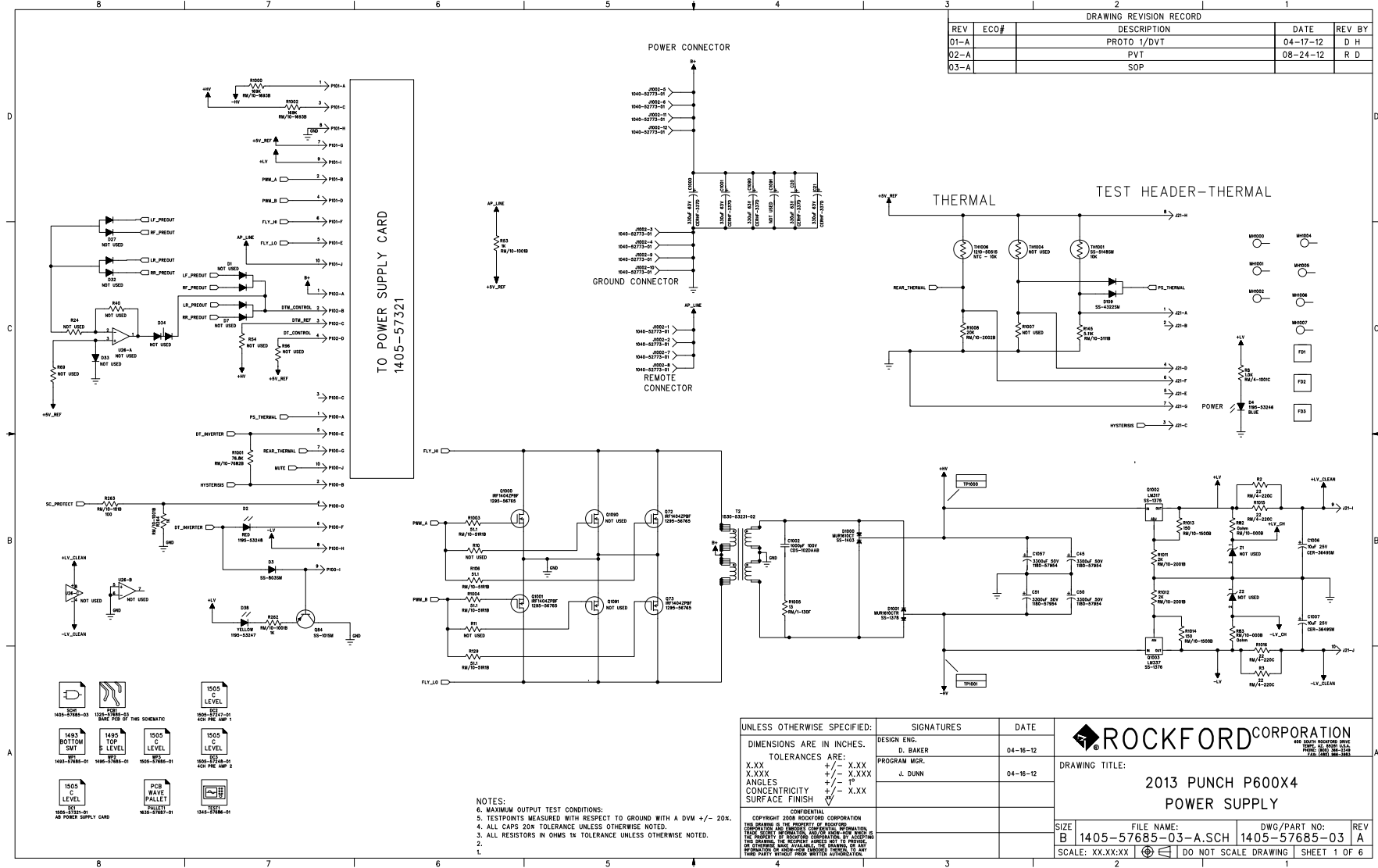


DRAWING REVISION RECORD				
REV	ECO#	DESCRIPTION	DATE	REV BY
01-A		PROTO 1/DVT	04-17-12	D H
02-A		PVT	08-24-12	R D
03-A		SOP		

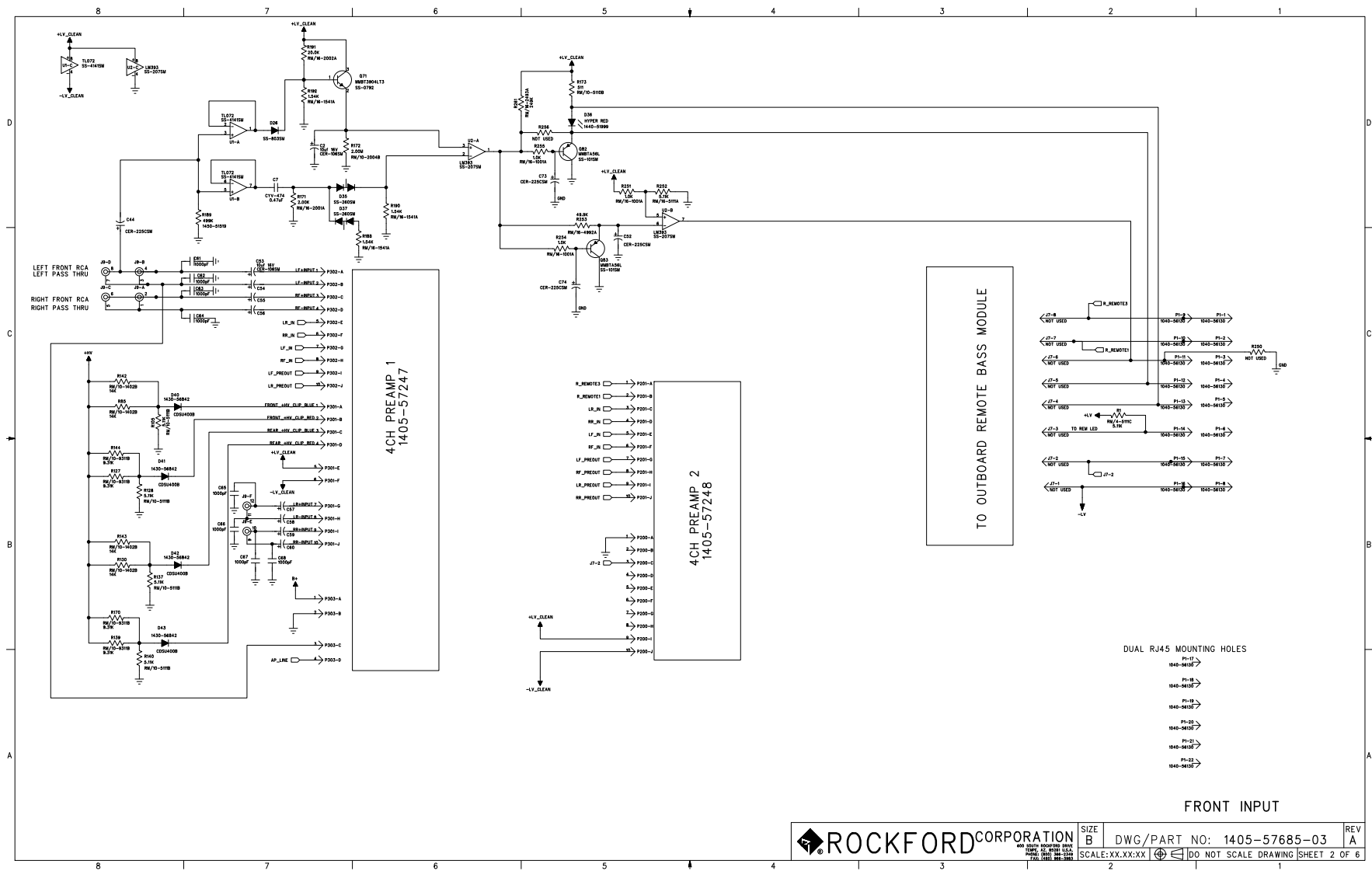


NOTES:  
 1. MAXIMUM OUTPUT TEST CONDITIONS:  
 2. TESTPOINTS MEASURED WITH RESPECT TO GROUND WITH A DVM +/- 20%.  
 3. ALL CAPS 20% TOLERANCE UNLESS OTHERWISE NOTED.  
 4. ALL RESISTORS IN OHMS UNLESS OTHERWISE NOTED.  
 5. ALL RESISTORS IN OHMS UNLESS OTHERWISE NOTED.  
 6. ALL RESISTORS IN OHMS UNLESS OTHERWISE NOTED.

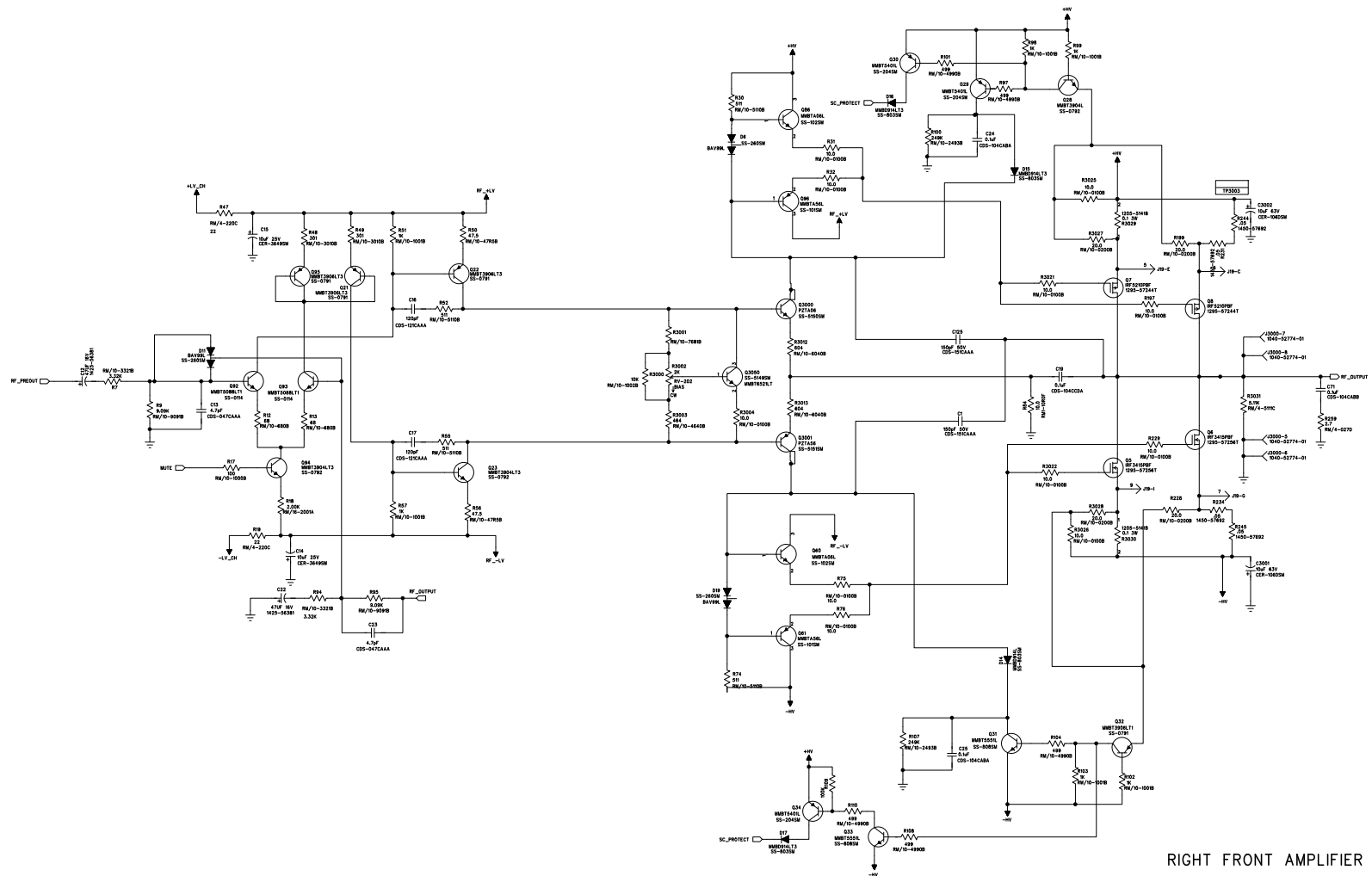
UNLESS OTHERWISE SPECIFIED:		SIGNATURES		DATE	
DIMENSIONS ARE IN INCHES.		DESIGN ENG.		04-16-12	
TOLERANCES ARE:		PROGRAM MGR.		04-16-12	
X.XX		J. DUNN			
X.XXX					
ANGLES					
+/- .1"					
CONCENTRICITY					
+/- .005					
SURFACE FINISH					
▽					

**ROCKFORD CORPORATION**  
 600 SOUTH ROCKFORD DRIVE  
 ROCKFORD, IL 60089-1001  
 PHONE: (815) 398-3344  
 FAX: (815) 398-3345

DRAWING TITLE:			
2013 PUNCH P600X4 POWER SUPPLY			
SIZE	FILE NAME:	DWG/PART NO:	REV
B	1405-57685-03-A.SCH	1405-57685-03	A
SCALE: XX.XX:XX	DO NOT SCALE DRAWING	SHEET 1 OF 6	

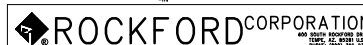






RIGHT FRONT AMPLIFIER

NOTES:  
1. SEE PAGE 1 NOTES.



SIZE B	DWG/PART NO: 1405-57685-03	REV A
SCALE: XX:XX:XX		

DO NOT SCALE DRAWING SHEET 4 OF 6





REV
A
OF 6