

# 119DA

## CLASSIC 600-Ohm Speaker Matching Transformer

- High quality, matching audio transformer for older equipment with 600 ohm audio output, driving modern low impedance speakers
- Compatible with legacy equipment manufactured by Collins Radio and Rockwell Collins.
- Can also be used for driving "classic" high impedance speakers used with newer equipment. Simply turn the 119DA around - swaping primary for secondary (ie...4 or 8 ohm input - with 600 ohms out).
- Manufactured with high quality 29M6 laminations for minimal distortion
- Concentric wound for excellent coupling
- Isolation type transformer
- Frequency response 30Hz - 20KHz (0/-2.0dB reference @ 1KHz)
- Distortion is less than 1% @ 30Hz

## ELECTRICAL SPECIFICATIONS

Characteristics		Typical
Input Impedance		600 Ohms
Output Impedance		4 & 8 Ohms
Output Power		12 W
<b>DCR</b>		
Primary Black-Black		24.05 Ohms
Secondary 0-4 Ohm		0.341 Ohm
Secondary 0-8 Ohm		0.513 Ohm
<b>Inductance</b>	<b>Impedance</b>	@ 1.0 kHz, 1.0 V OC
Primary Black-Black		3.48H 19.98KOhm
Secondary 0-4 Ohm		72.30mH 281.2 Ohm
Secondary 0-8 Ohm		56.11mH 564.2 Ohm
<b>Leakage Inductance</b>		
Primary Black-Black		@ 1.0 kHz, 1.0 V SC 20.26mH
<b>Dielectric Strength</b>		
Temperature Range		500VRMS -40 to 105 degC

## TEST CONDITIONS

Measurement instruments:

D scope series iii audio analyzer

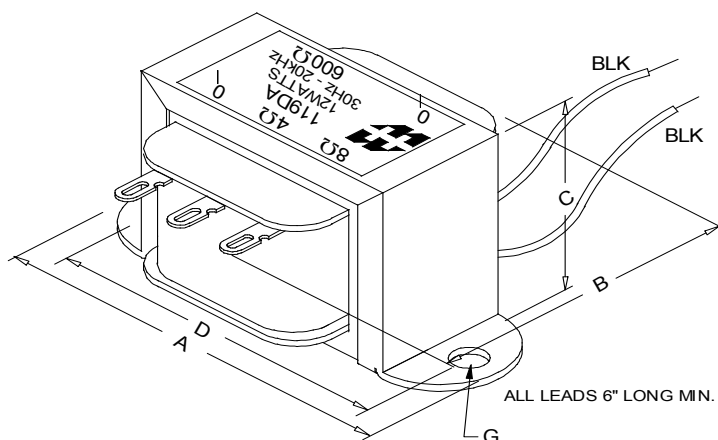
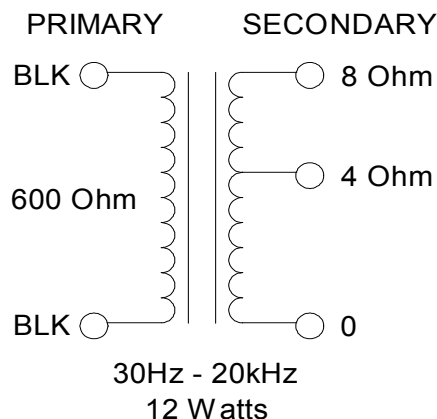
Wayne Kerr 3255B with a 3265B

Keithley 2010 DVM

Hp4192a impedance analyzer

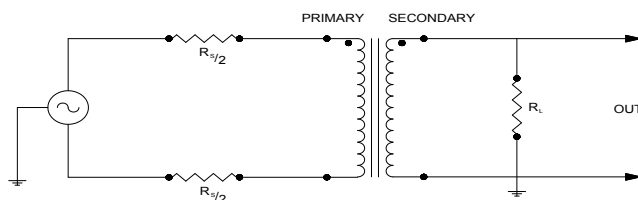
\* All graphs input level 27dBu @1.0KHz reference.

\*\*The results are typical and are subject to normal manufacturing and electrical tolerances.

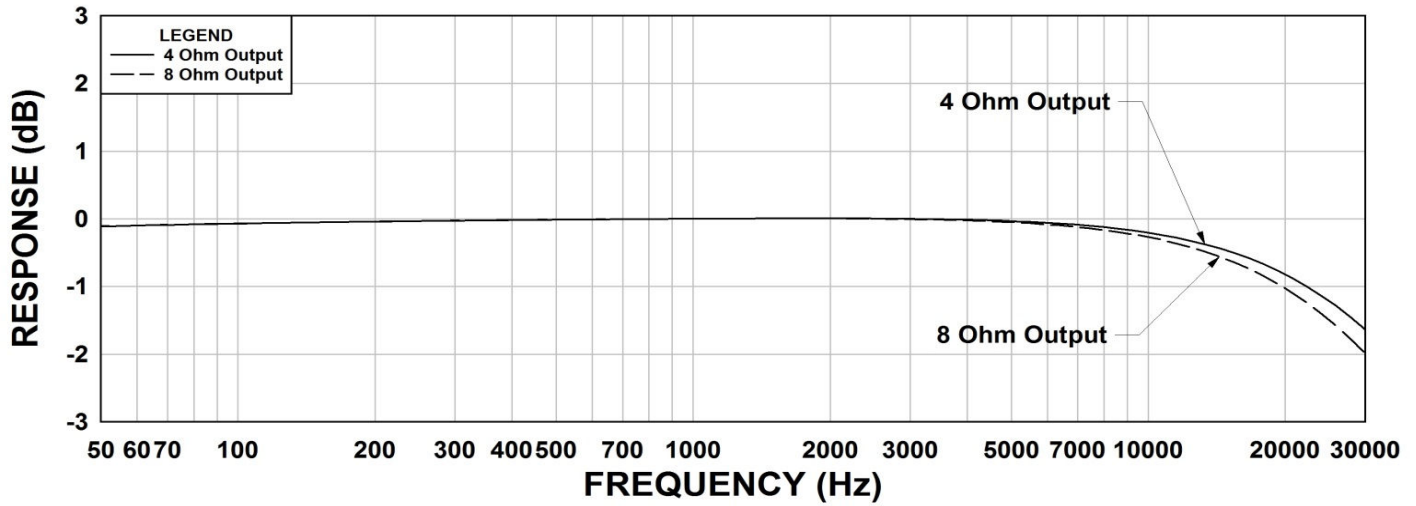


## Dimensions

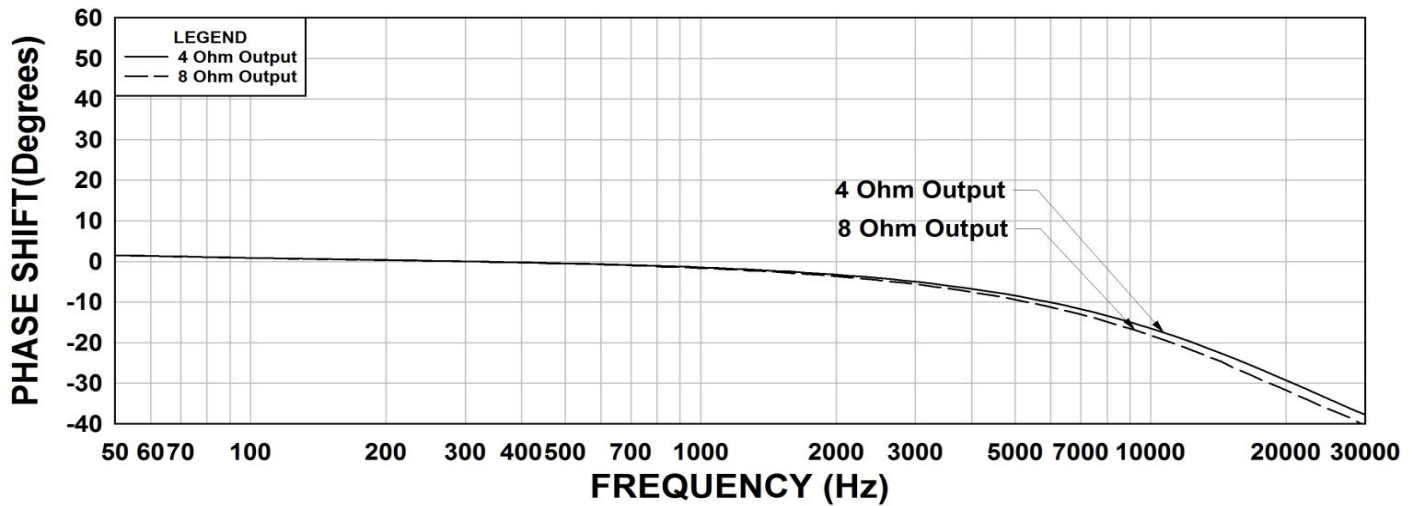
A	3.250" ±0.063	C	1.995" ±0.063	G	0.187" X 0.300"
B	2.350" ±0.125	D	2.813" ±0.063		±0.015



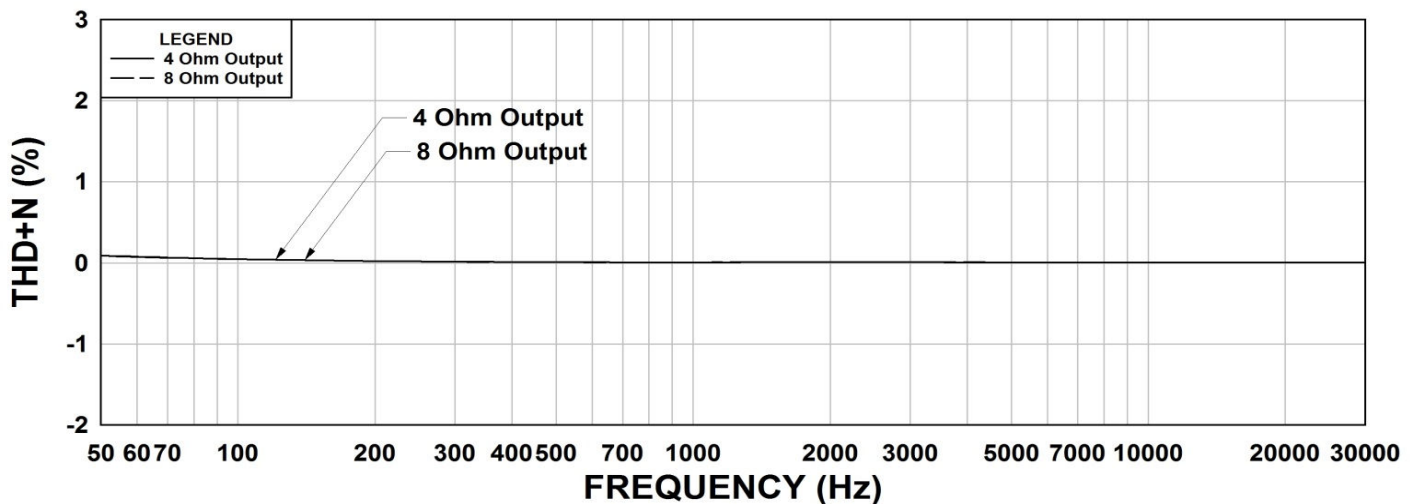
### 119DA Frequency Response RS = 600 Ohms



### 119DA Phase Shift RS = 600 Ohms



### 119DA THD+N RS = 600 Ohms



This drawing and the information in it is the property of Hammond Manufacturing. It may not be reproduced, transmitted or used in any manner whatsoever without the written permission of Hammond Manufacturing. Data subject to change without notice.