

Operating Conditions

12AT7

$V_{ak} = 128V$

$I_a = 2.2mA$

$V_g = -2.0V$

6N6P

$V_{ak} = 108V$

$I_a = 6.0mA$

$V_g = -4.75V$

$R_p = 3k$

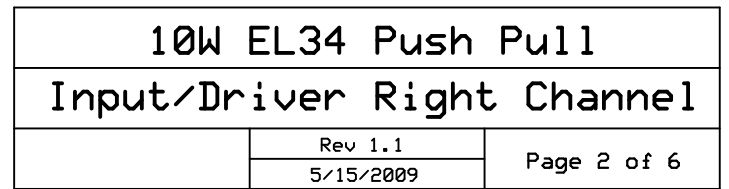
10W EL34 Push Pull

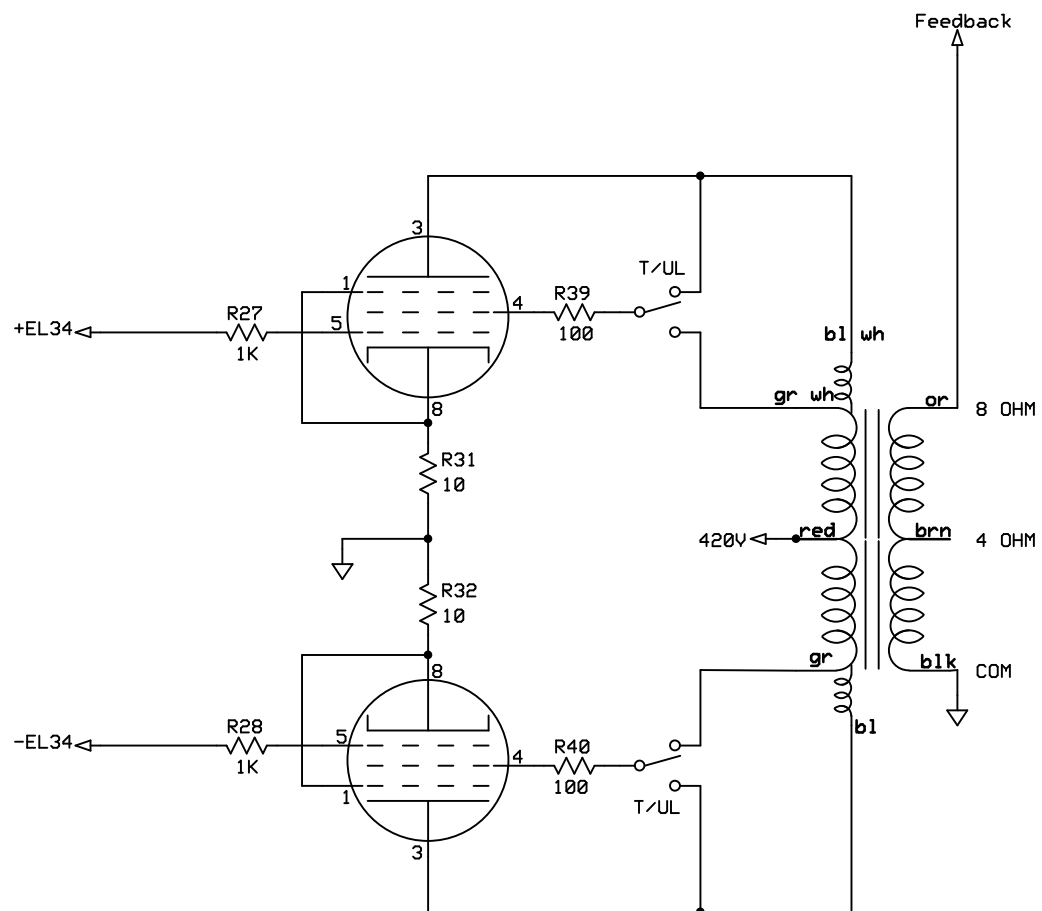
Input/Driver Left Channel

Rev 1.1

5/15/2009

Page 1 of 6





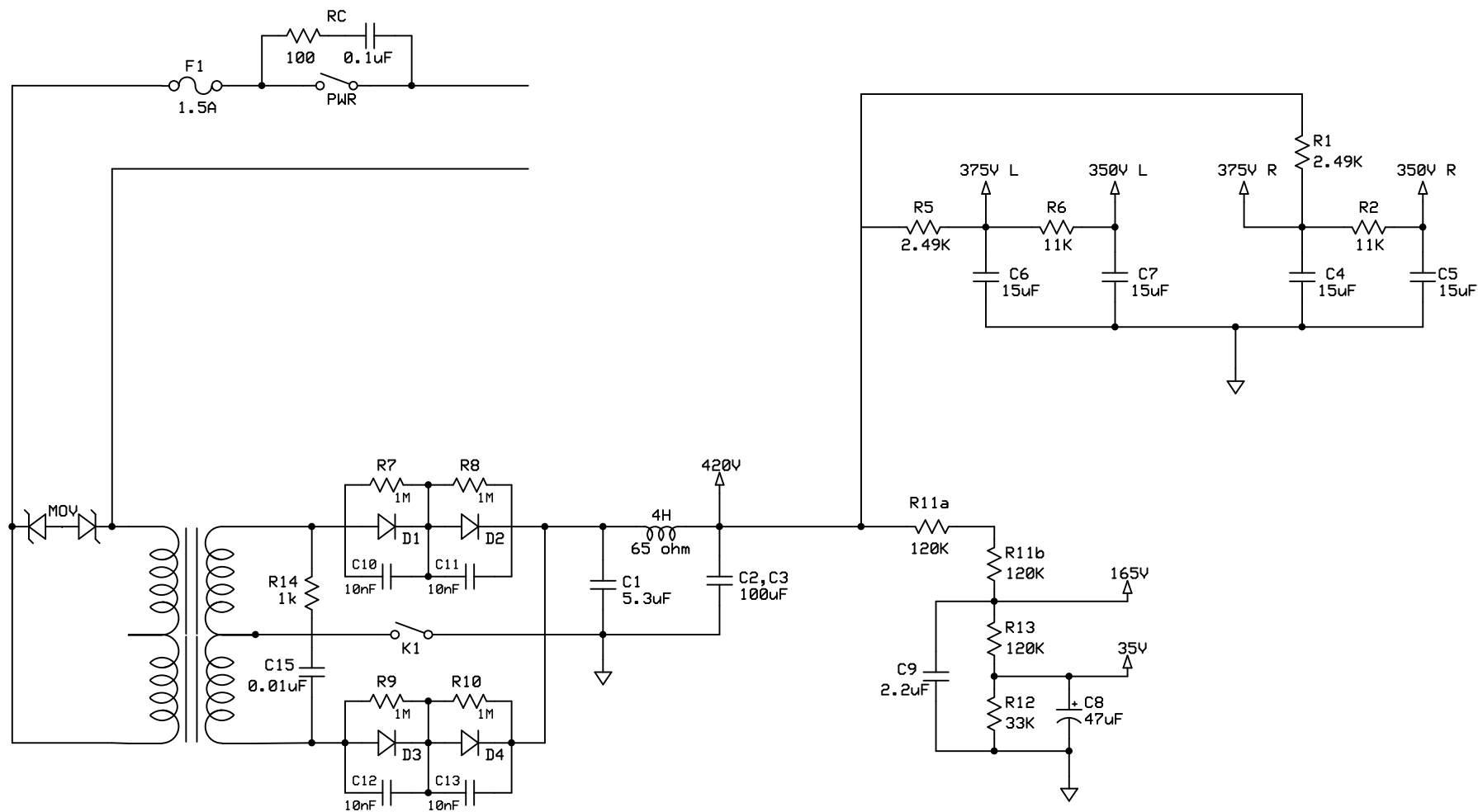
10W EL34 Push Pull

Output Stage

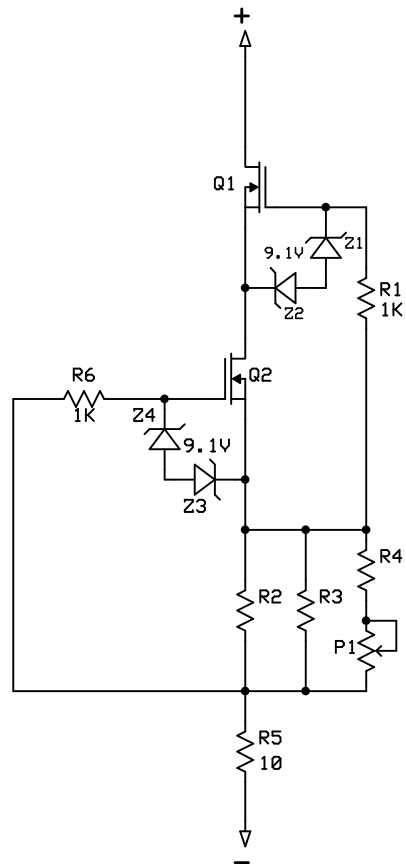
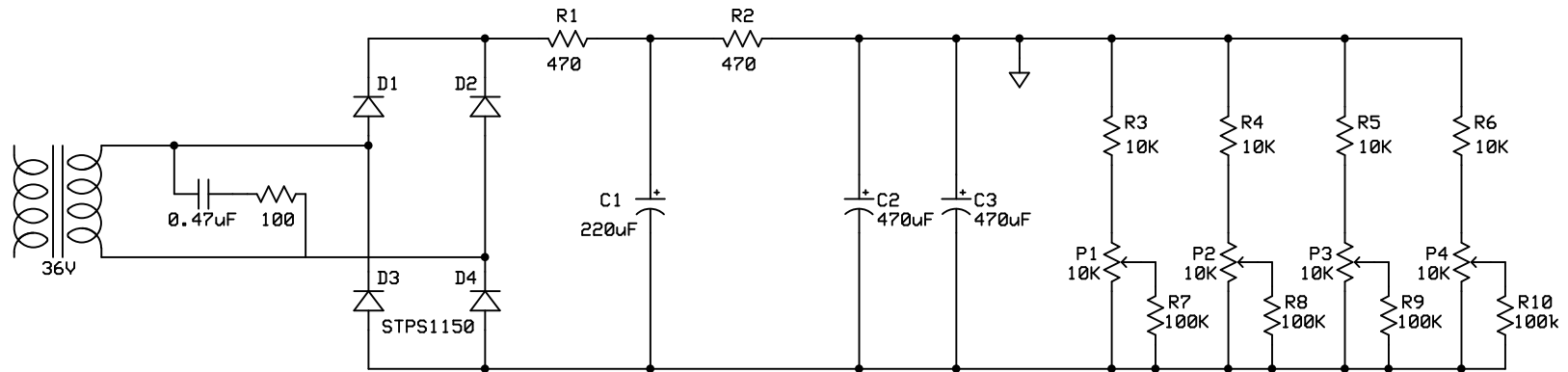
Rev 1.1

5/15/2009

Page 3 of 6



10W EL34 Push Pull		
Power Supply		
	Rev 1.1	Page 4 of 6
	5/15/2009	



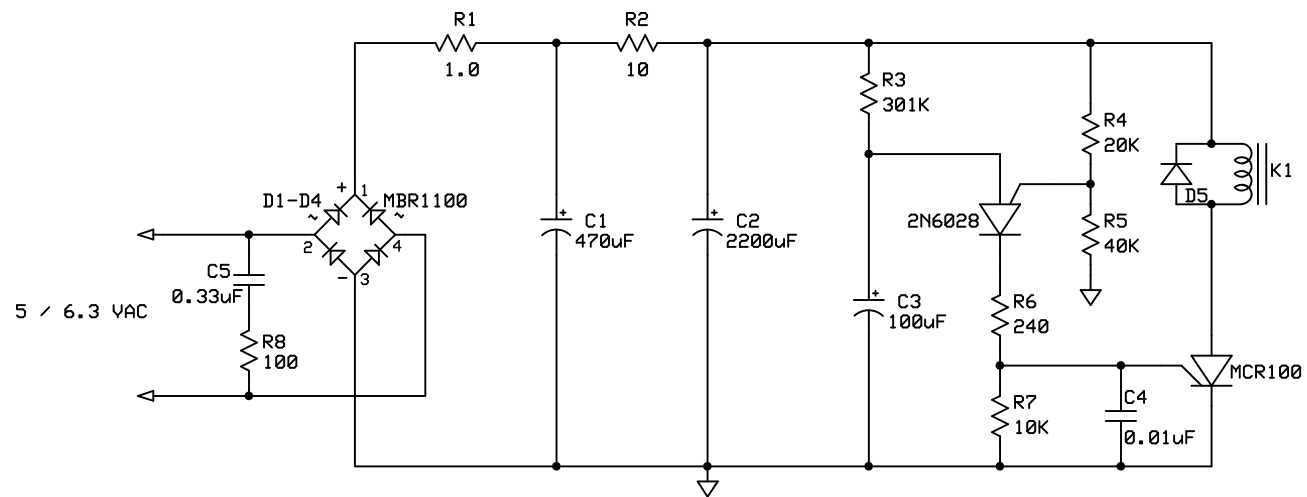
10W EL34 Push Pull

Bias Supply / CCS

Rev 1.1

5/15/2009

Page 5 of 6



10W EL34 Push Pull

Timer Module

Rev 1.1

5/15/2009

Page 6 of 6