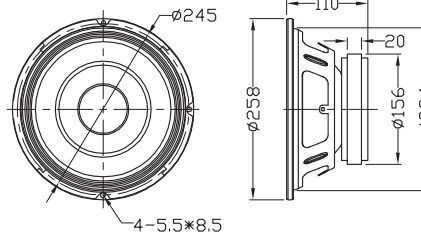
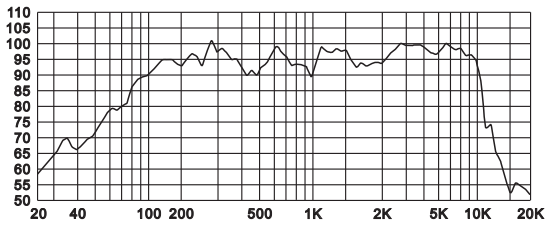
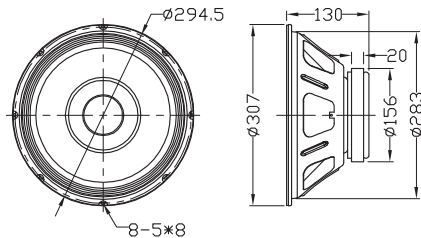
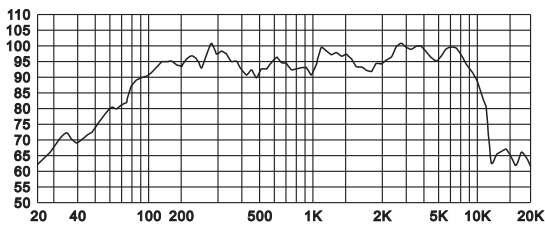


## PROFESSIONAL BASS SPEAKER

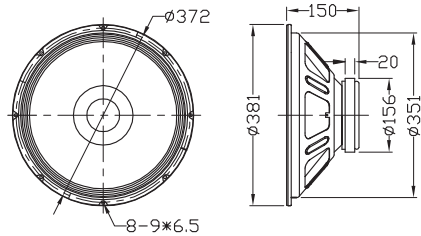
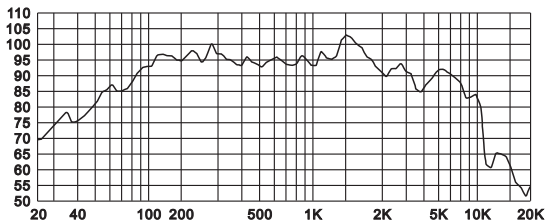
### EC1040-8-2-300W



### EC1260F-8-300W



### EC1560F-A-HC



MODEL	EC1040-8-2-300W	EC1260F-8-300W	EC1560F-A-HC
<b>SPECIFICATION</b>			
Nominal Diameter	256mm/10"	307mm/12"	387mm/15"
Impedance	8ohms	8ohms	8ohms
Frequency Range	Fs-10000Hz	Fs-10000Hz	Fs-10000Hz
Max. Power	600W	600W	600W
Power Rating	300Wrms	300Wrms	300Wrms
Sensitivity(SPL)	95dB(1W/1M)	95dB(1W/1M)	94dB(1W/1M)
<b>MATERIALS</b>			
Basket	Steel	Steel	Steel
Cone	Paper	Paper	Paper
Surround	Cloth	Cloth	Cloth
Voice Coil	φ50mm / KSV	φ50mm / KSV	φ50mm / TIL
Magnet	Ferrite / φ156mm / 57.4Oz	Ferrite / φ156mm / 57.4Oz	Ferrite / φ156mm / 57.4Oz
<b>THIELE-SMALL PARAMETERS</b>			
Free Air Resonance(Fs)	54Hz	47Hz	36Hz
Suspension Compliance(Cms)	0.28mm/N	0.23mm/N	0.19mm/N
Moving Mass(Mms)	30.5g	50.2g	104.4g
Mechanical Q Factor(Qms)	3.3	4.1	3.2
Electrical Q Factor(Qes)	0.45	0.61	0.6
Total Q Factor(Qts)	0.4	0.53	0.5
Equivalent Volume(Vas)	60.5	103.0	223.4
RDC DC Resistance(Re)	6.2ohms	6.2ohms	6.2hms
Effective Cone Area(Sd)	387.0cm <sup>2</sup>	564cm <sup>2</sup>	907.5cm <sup>2</sup>
Force Factor(BL)	11.9Tm	12.3Tm	15.5Tm
Reference Efficiency(ηo)	2.0%	1.7%	1.6%
<b>PACKING</b>			
	4PCS/CTN:	3PCS/CTN:	4PCS/CTN:
	CARTON:490*280*250mm	CARTON:810*340*160mm	CARTON:710*415*350mm
	(0.0343 M <sup>3</sup> /CTN)	(0.044 M <sup>3</sup> /CTN)	(0.103 M <sup>3</sup> /CTN)