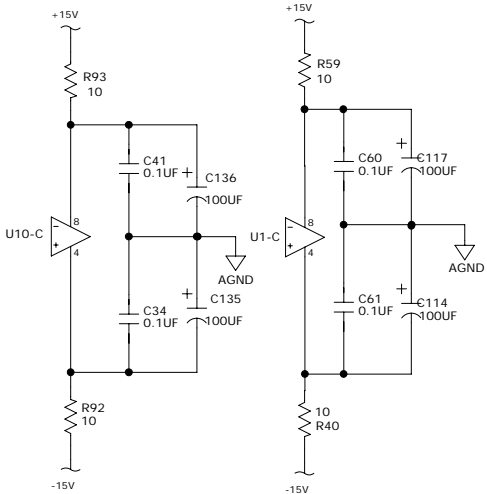
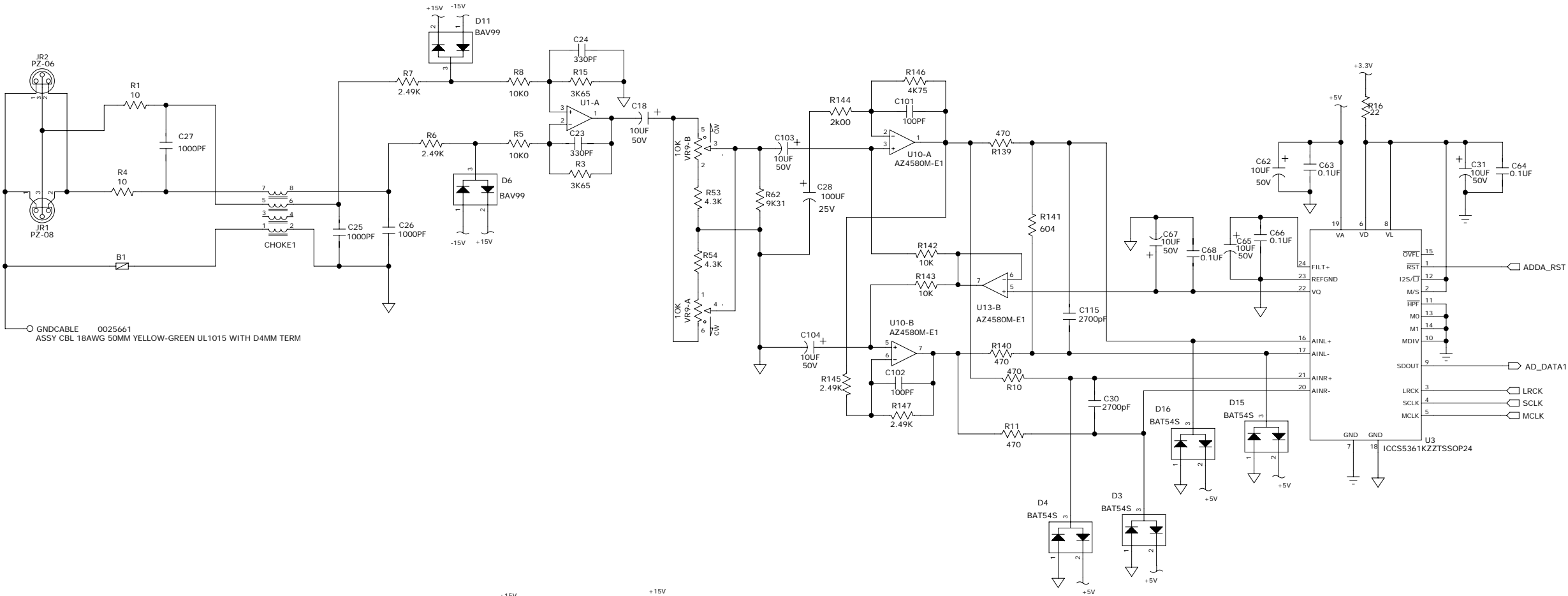


ECO/DSR	REV:	DESCRIPTION	REV. BY:	DATE
DSRCHN0599	800	MOVE D1 UP 0.4MM	Charles	2008-11-12
ECOCHN0640	A00	Change SCH and release to production	DENNY	2008-12-26
ECOCHN0652	B00	Change U13 link	John.Lin	2009-01-21
ECOCHN0654	B01	Add cable to Gnd(0025661)	John.Lin	2009-02-06
ECOCHN0664	C00	Add L1,L2	John.Lin	2009-03-31
ECOCHN0673	C01	update POT	John.Lin	2009-04-09
ECOWD11470	D00	Cleanse, 9x Caps for 6knoise, 3.3reg	NO'N	2009-05-01
ECOWD12240	E00	DFM IMPROVEMENTS.	NO'N	2010-01-27
ECOWD13149	E01	CHG R146 FROM 4K75 TO 1K74	RJ	2010-09-08
ECOWD13180	E02	CHG R146 FROM 1K74 TO 4K75	RJ	2010-09-16
ECOWD13530	E03	Replace XLR Fem with non-Mackie part	RJ	2010-12-20
ECOWD13723	E04	Input gain change: R3,R15,R139,R140	RJ	2011-03-02
ECOWD13763	E05	Correct R141,R144	RJ	2011-03-17



NOTES:
-00 ASSY IS THE HD1531
-01 ASSY IS THE HD1521
SEE NOTE ON SHEET 3 FOR -01 BOM

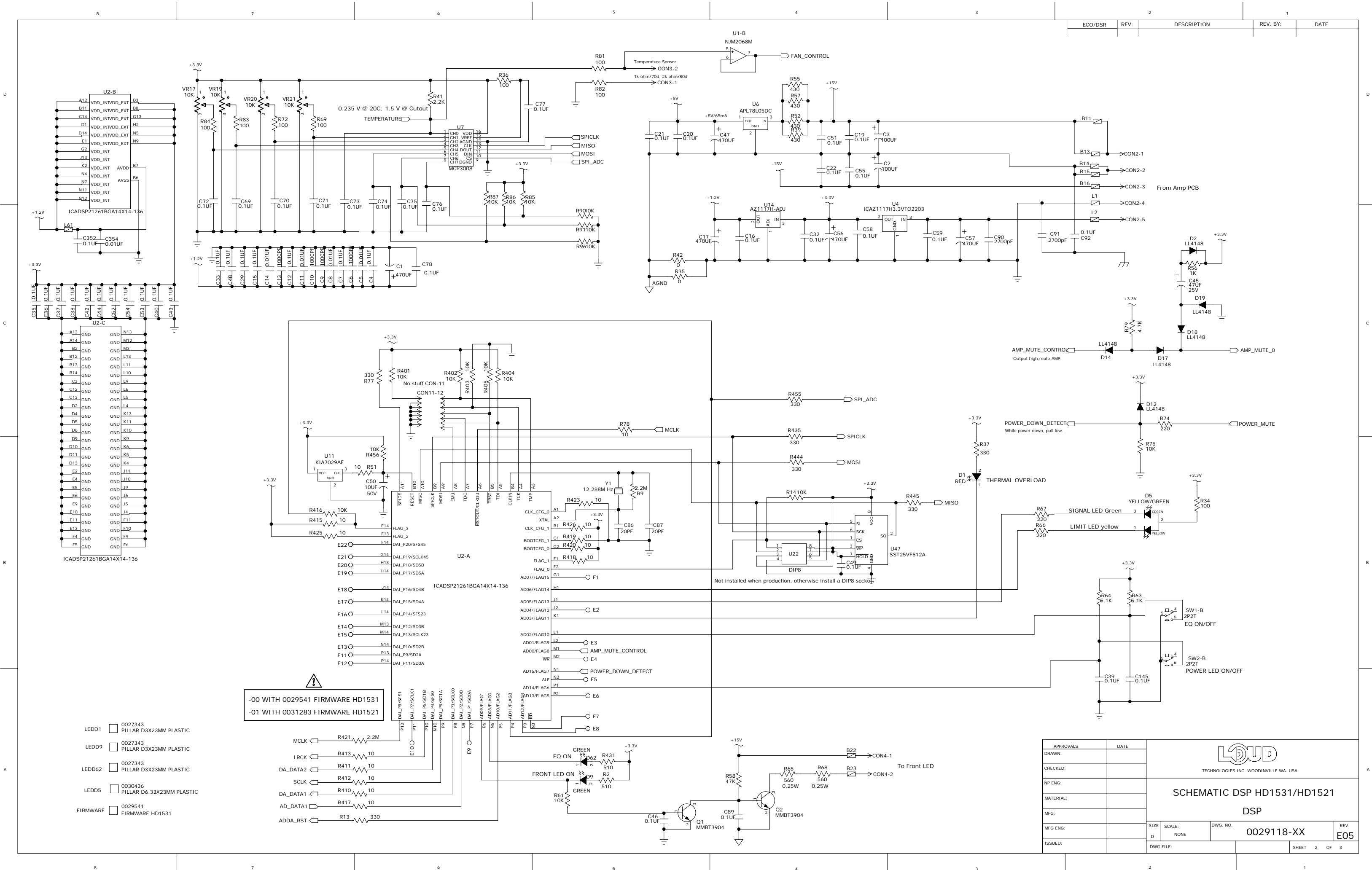
Z1 ☐ 2034504
SILICONE RTV NON-FLOWABLE PASTE.

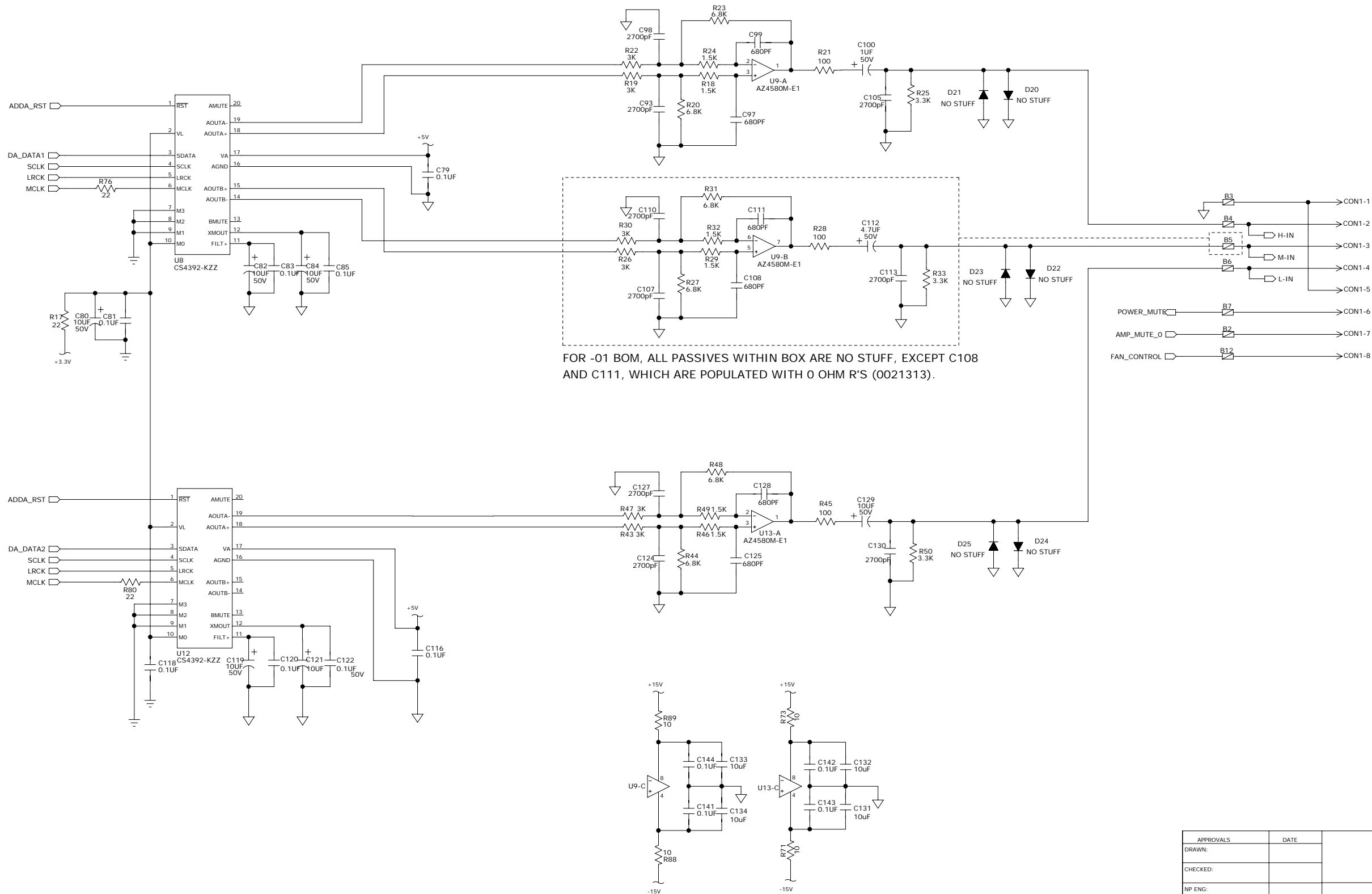
SCH1 ☐ 0029118-XX
SCHEMATIC PCB ASSY DSP HD1531/HD1521


PCB1 ☐ 0029119-04
PCB FAB FR4 FOUR LAYERS 1 OZ 1.6MM DSP BOARD HD1531/HD1521

© 2008 LOUD TECHNOLOGIES INC.
ALL RIGHTS RESERVED
THE INFORMATION CONTAINED HEREIN
IS PROPRIETARY AND CONFIDENTIAL
PROPERTY OF LOUD TECHNOLOGIES INC.

APPROVALS	DATE	<div>LOUD</div> <div>TECHNOLOGIES INC. WOODINVILLE WA. USA</div> <div>SCHEMATIC DSP HD1531/HD1521</div> <div>INPUT</div>		
DRAWN: Charles	2008-12-26			
CHECKED: Diana	2009-11-25			
NP ENG:				
MATERIAL:		SIZE: D SCALE: NONE DWG. NO. 0029118-XX REV. E05		
MFG:				
MFG ENG:				
ISSUED:				
DWG FILE:		SHEET 1 OF 3		





APPROVALS		DATE		<div> TECHNOLOGIES INC. WOODINVILLE WA. USA SCHEMATIC DSP HD1531/HD1521 OUTPUT</div>			
DRAWN:							
CHECKED:							
NP ENG:							
MATERIAL:							
MFG:				SIZE DSCALE: NONEDWG. NO. 0029118-XXREV. E05			
MFG ENG:							
ISSUED:							
		DWG FILE:				SHEET 3 OF 3	