

ECO/DSR	REV:	DESCRIPTION	REV. BY:	DATE
DSRCHN0581	602	Change SCH	Charles	2008-10-29
DSRCHN0588	603	PCB assembly R153AE~R178A change to C153-A,C178-A, make the rev of sch to go with the Bom	Charles	2008-10-31
ECOCHN0640	A00	Change SCH and release to production	DENNY	2008-12-26
ECOCHN0652	B00	Change R96 to 2.2k	John.Lin	2009-01-21
ECOCHN0654	B01	Change R200/R201 to 10K; Add R27.	John.Lin	2009-02-06
ECOCHN0664	C00	Update design.	John.Lin	2009-03-30
ECOCHN0673	C01	Update Q10,Q11,Q12,Q24	John.Lin	2009-04-09
ECOWD11441	D00	ADD TIE WRAPS FOR L2,L7 & L16 DESIGN IMPROVEMENTS	RJ	2009-04-30
ECOWD11797	E00	HOLE SIZE CORRECTION ON PCB	KR	2009-08-18
ECOWD12457	F00	R33 ADDED. R26,D20,C174 NO STUFF.	RJ	2010-01-28
ECOWD12483	G00	CHANGED FET DECAL ON BOARD	TH	2010-02-05
ECOWD13041	G01	RTV ADDED, ALT PN FOR DRIVER IC	KR	2010-08-04
ECOWD13113	G02	CHANGED R191, R182, R183	RJ	2010-08-24
ECOWD13224	G03	CHANGED R191, R182, R183 back to 470k	RJ	10-05-2010
ECOWD13230	G04	CHANGED R191, R182, R183 size to 1206	RJ	10-06-2010
ECOWD13583	G05	ADD ALTERNATE PARTS TO BOM	RJ	1-19-2011
ECOWD13964	G06	Change HF AMP PWM FREQUENCY	RJ	6-09-2011

NOTES:
-00 ASSY IS THE HD1531
-01 ASSY IS THE HD1521

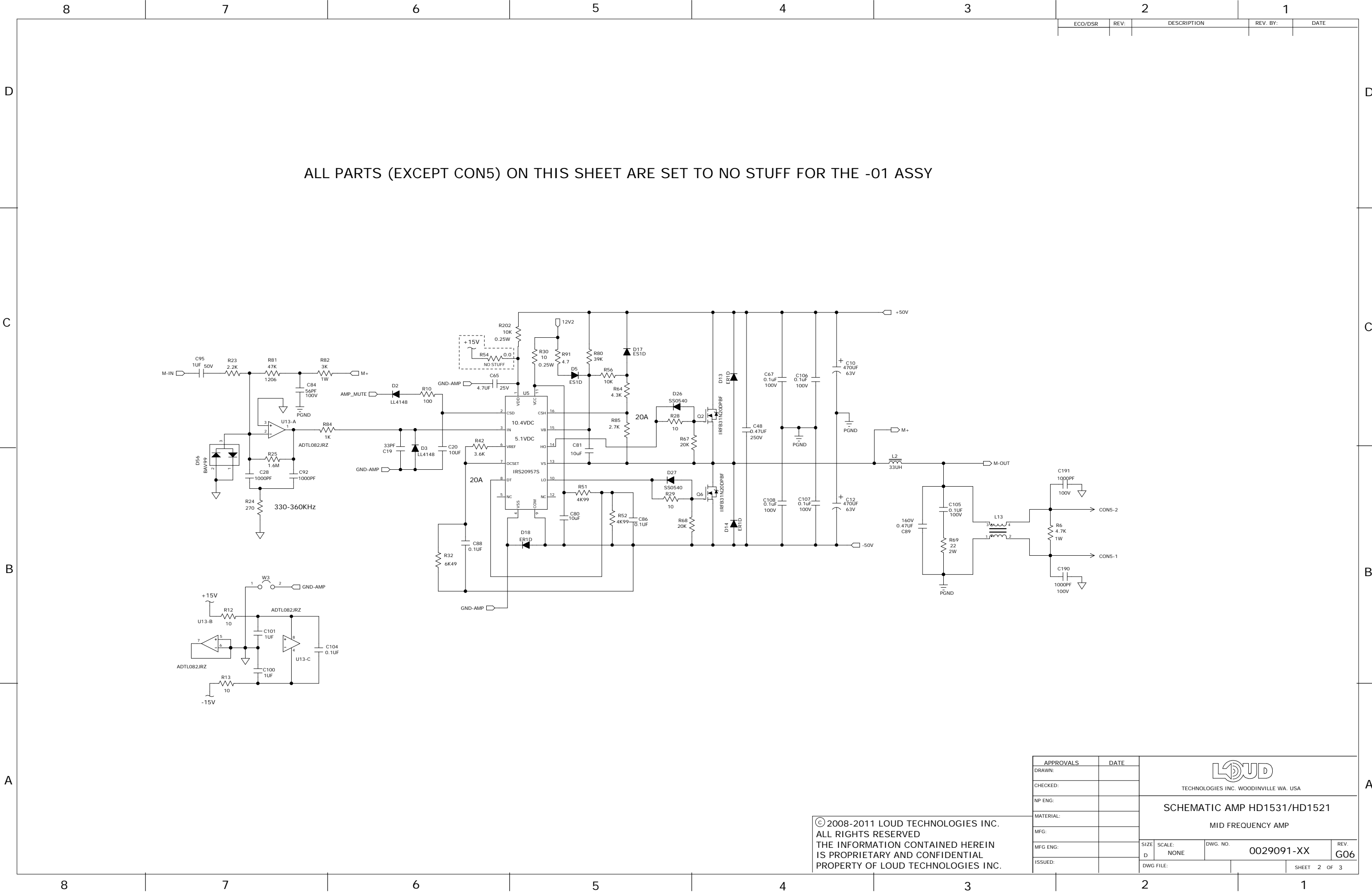
FOR -01 ASSY, ALL PARTS (EXCEPT CON5) ON SHEET 2 "AMP-MID" ARE SET TO "NO STUFF" FOR THE BOM.

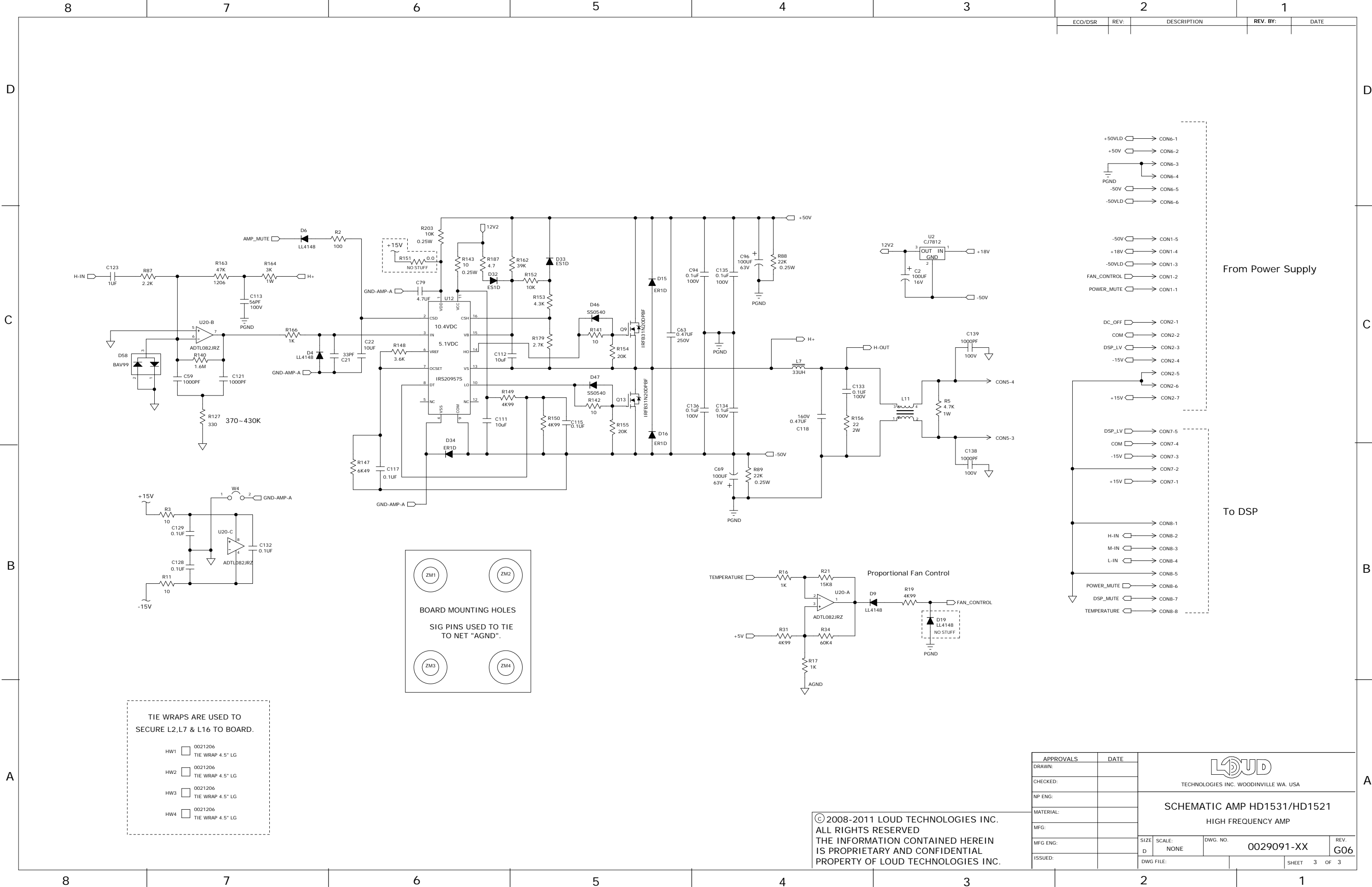
APPROVALS		DATE	<div>LOUD</div> <div>TECHNOLOGIES INC. WOODINVILLE WA. USA</div> <div>SCHEMATIC AMP HD1531/HD1521</div> <div>LOW FREQUENCY AMP</div>			
DRAWN:	Charles	08-12-26				
CHECKED:			<div>SIZE: D</div> <div>SCALE: NONE</div> <div>DWG. NO. 0029091-XX</div> <div>REV. G06</div>			
NP ENG:						
MATERIAL:						
MFG:						
MFG ENG:						
ISSUED:			DWG FILE:		SHEET 1 OF 3	


© 2008-2011 LOUD TECHNOLOGIES INC.
ALL RIGHTS RESERVED
THE INFORMATION CONTAINED HEREIN
IS PROPRIETARY AND CONFIDENTIAL
PROPERTY OF LOUD TECHNOLOGIES INC.

RTV1 2034504 SILICONE RTV NON-FLOWABLE PASTE

PCB1 0029092-04 PCB FAB AMP BOARD HD SERIES
SCH1 0029091-XX SCHEMATIC AMP HD1531/HD1521





APPROVALS		DATE		<div></div> <div>TECHNOLOGIES INC. WOODINVILLE WA. USA</div>			
DRAWN:							
CHECKED:							
NP ENG:				SCHEMATIC AMP HD1531/HD1521 HIGH FREQUENCY AMP			
MATERIAL:							
MFG:							
MFG ENG:				SIZE	SCALE:	DWG. NO.	REV.
ISSUED:				D	NONE	0029091-XX	G06
		DWG FILE:					SHEET 3 OF 3

© 2008-2011 LOUD TECHNOLOGIES INC.
ALL RIGHTS RESERVED
THE INFORMATION CONTAINED HEREIN
IS PROPRIETARY AND CONFIDENTIAL
PROPERTY OF LOUD TECHNOLOGIES INC.