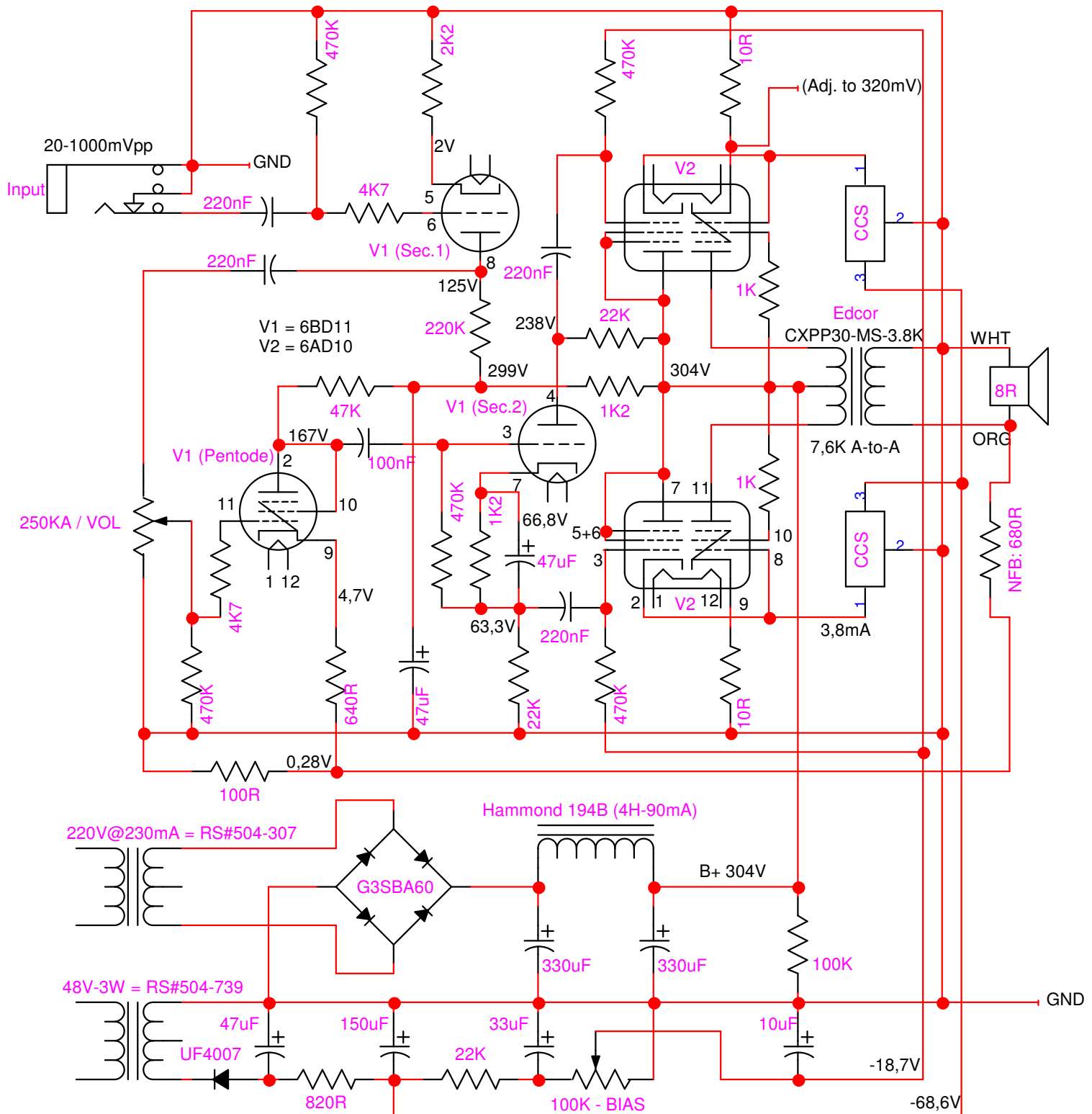
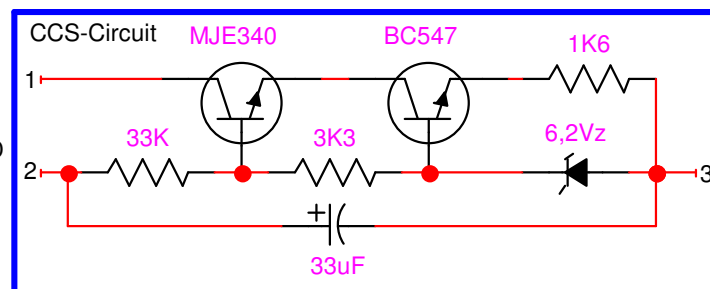


MINI Gee-Tah Amplifier v2.6 for Hi-Fi



6V@8,34A = RS#504-666
 RS#504-666 (2x6V/4.17A)
 is for Stereo-Amp.
 Mono-Amp may use smaller
 filament-transformer.
 One amp = 3.15Amp fil's.



To use without CCS:
 Strap 47KOhm between
 ref's 1 & 3 and delete
 all of the CCS-parts.