



Box Properties

--Description--

Name:

Type: Vented Box

Shape: Prism, square (optimum)

--Box Parameters--

Vb = 4.287 cu.ft

V(total) = 4.642 cu.ft

Fb = 19.83 Hz

QL = 6.143

F3 = 23.62 Hz

Fill = none

--Vents--

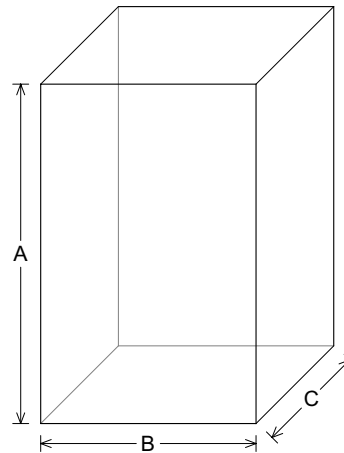
No. of Vents = 1

Vent shape = round

Vent ends = one flush

Dv = 4 in

Lv = 17.72 in



--External Dimensions--

A = 33.82 in

B = 21.47 in

C = 14.59 in

--Internal Dimensions--

A = 32.32 in

B = 19.97 in

C = 12.34 in

--Wall Thickness--

Front = 1.5 in

Side = 0.75 in

Driver Properties

--Description--

Name: Reference 295-464

Type: Standard one-way driver

--Configuration--

No. of Drivers = 1

--Mechanical Parameters--

Fs = 23 Hz

Qms = 3

Vas = 3 cu.ft

Xmax = 14 mm

Xmech = 28 mm

P-Dia = 12.5 in

--Electrical Parameters--

Qes = 0.52

Re = 3.333 ohms

Le = 0.95 mH

Z = 4 ohms

Pe = 700 watts

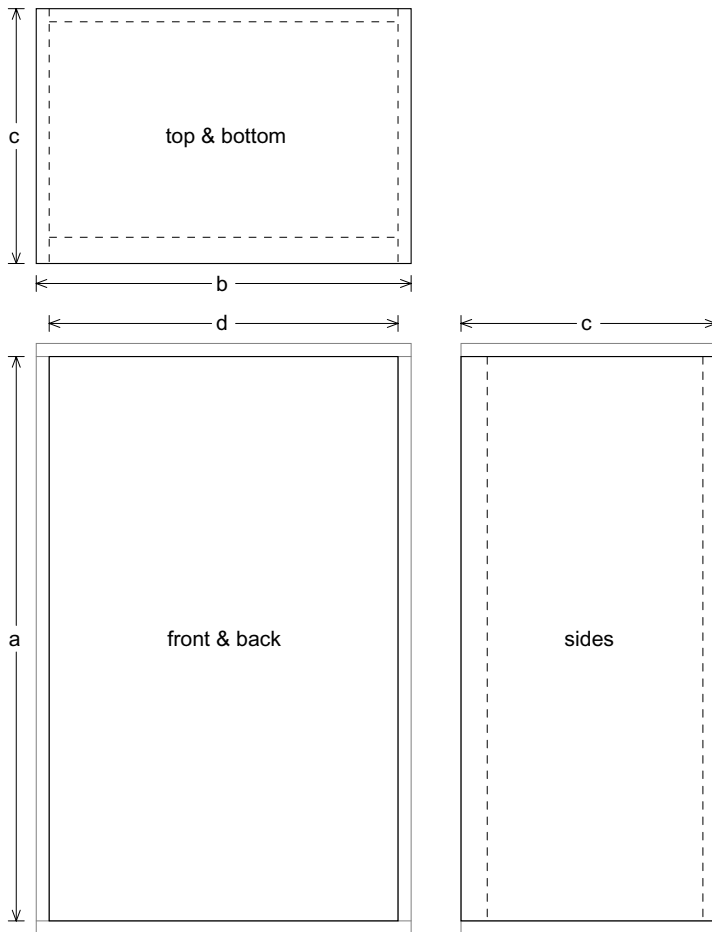
--Electromech. Parameters--

Qts = 0.44

no = 0.192 %

1-W SPL = 84.97 dB

2.83-V SPL = 88.78 dB



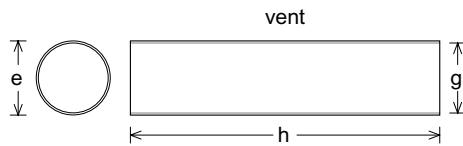
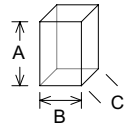
Box Parts

Box Shape: Optimum Square Prism
 1 Top, 1 Bottom: depth (c) = 14.59 in
 width (b) = 21.47, thickness = 0.75 in
 1 Front: height (a) = 32.32 in
 width (d) = 19.97, thickness = 1.5 in
 1 Back: height (a) = 32.32 in
 width (d) = 19.97, thickness = 0.75 in
 2 Sides: height (a) = 32.32 in
 depth (c) = 14.59, thickness = 0.75 in

--Driver Mounting--
 Mounting: Flush

--Vent Parts--
 1 Duct: outside diameter (e) = 4.25 in
 inside diameter (g) = 4 in
 length (h) = 17.72 in

--Misc Objects Inside or Part of Box--
 Object: Brace
 No. of Objects: 8
 Each Object: 0.0277 cu.ft
 Total Volume: 0.221 cu.ft (reduces box)
 Shape: Square Prism
 A = 31.88 in
 B = 0.75 in
 C = 2 in





Box Properties

--Description--

Name:

Type: Vented Box

Shape: Prism, square (optimum)

--Box Parameters--

Vb = 4.287 cu.ft

V(total) = 4.612 cu.ft

Fb = 19.83 Hz

QL = 6.143

F3 = 28.08 Hz

Fill = heavy

--Vents--

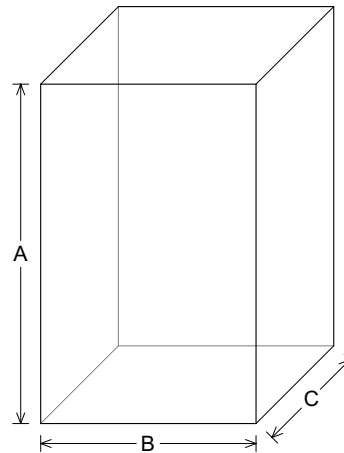
No. of Vents = 1

Vent shape = round

Vent ends = one flush

Dv = 4 in

Lv = 17.72 in



--External Dimensions--

A = 33.82 in

B = 21.47 in

C = 14.59 in

--Internal Dimensions--

A = 32.32 in

B = 19.97 in

C = 12.34 in

--Wall Thickness--

Front = 1.5 in

Side = 0.75 in

Driver Properties

--Description--

Name: Reference 295-464

Type: Standard one-way driver

--Configuration--

No. of Drivers = 1

--Mechanical Parameters--

Fs = 23 Hz

Qms = 3

Vas = 3 cu.ft

Xmax = 14 mm

Xmech = 28 mm

P-Dia = 12.5 in

--Electrical Parameters--

Qes = 0.52

Re = 3.333 ohms

Le = 0.95 mH

Z = 4 ohms

Pe = 700 watts

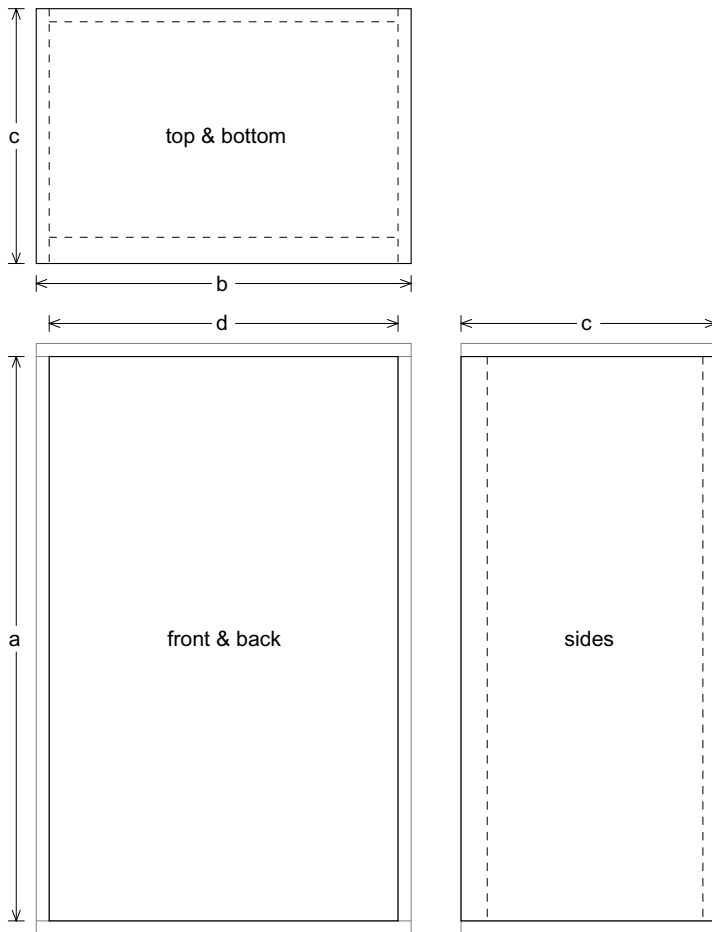
--Electromech. Parameters--

Qts = 0.44

no = 0.192 %

1-W SPL = 84.97 dB

2.83-V SPL = 88.78 dB



Box Parts

Box Shape: Optimum Square Prism
 1 Top, 1 Bottom: depth (c) = 14.59 in
 width (b) = 21.47, thickness = 0.75 in
 1 Front: height (a) = 32.32 in
 width (d) = 19.97, thickness = 1.5 in
 1 Back: height (a) = 32.32 in
 width (d) = 19.97, thickness = 0.75 in
 2 Sides: height (a) = 32.32 in
 depth (c) = 14.59, thickness = 0.75 in

--Driver Mounting--
 Mounting: Flush

--Vent Parts--
 1 Duct: outside diameter (e) = 4.25 in
 inside diameter (g) = 4 in
 length (h) = 17.72 in

--Misc Objects Inside or Part of Box--
 Object: Brace
 No. of Objects: 8
 Each Object: 0.0277 cu.ft
 Total Volume: 0.221 cu.ft (reduces box)
 Shape: Square Prism
 A = 31.88 in
 B = 0.75 in
 C = 2 in

