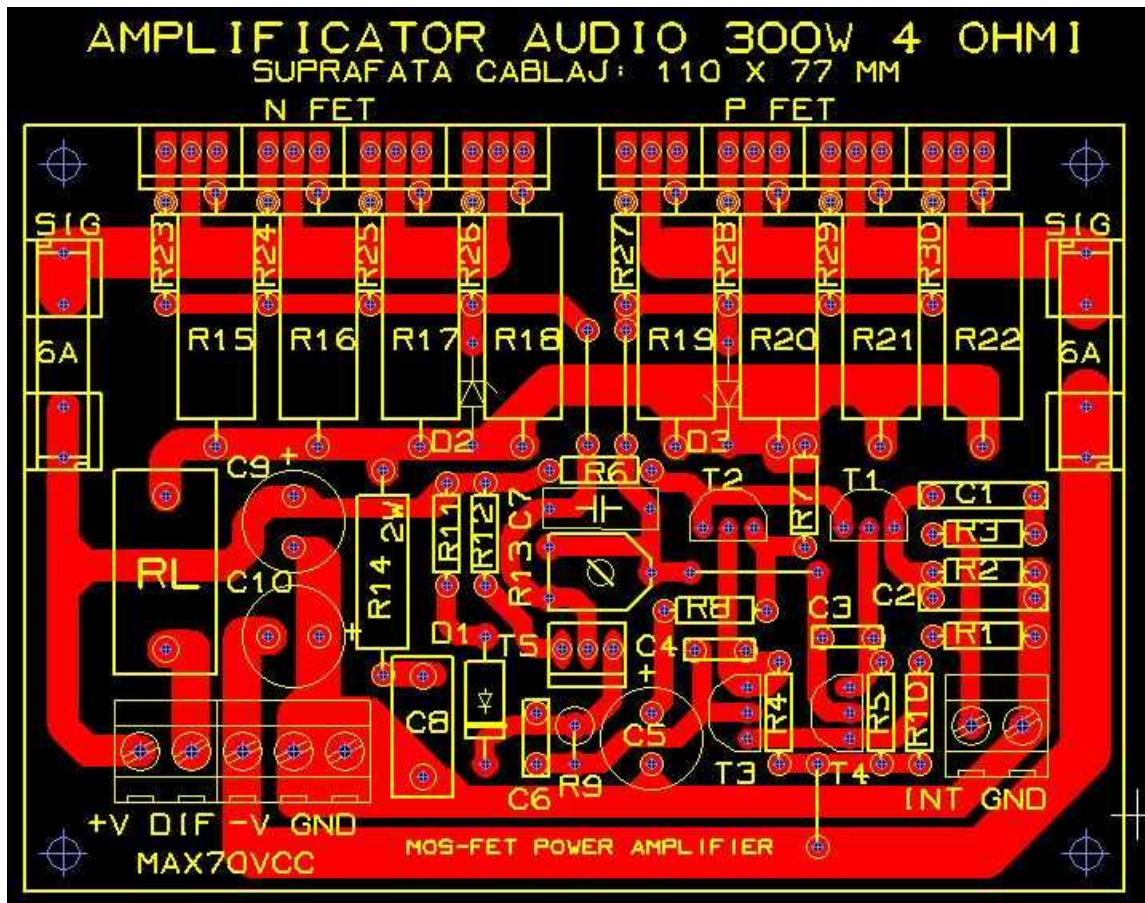


AMPLIFICATOR AUDIO Hi-Fi CU MOSFET



Valorile pieselor

T1=T2=BC640;	C1=1uF - 63V;
T3=T4=BC639;	C2=33pF - 100V;
T5=MJE350 - cu radiator;	C3=C4=47pF - 100V;
R1=100k - 0,25W;	C5=220uF - 63V;
R3=47k - 0,25W;	C6=10nF - 100V;
R3=2k2 - 0,25W;	C7=1uF - 100V;
R4=R5=5k1 - 0,25W;	C8=220nF - 250V;
R6=56K - 0,25W;	C9=C10=100uF - 63V sau 80V (in functie de tensiunea de alimentare).
R7=22k - 0,25W;	D1=1N4001 (daca +/-V < 60V se poate inlocui cu 1N4148);
R8=470 - 0,25W;	D2=D3=Diode Zener de 13V, Pd=min 1W.
R9=12k - 0,25W;	RL= inductanta de 1uH.
R10=R11=R12=100 - 0,25W;	N_FET = IRF640 (IRFP240);
R13=Semireglabil 1k - 0,5W;	P_FET = IRF9640 (IRFP9240).
R14=4,7 - min. 2W;	
R15...R22=0,22 - 5W;	
R23...R30=470 - 0,25W;	