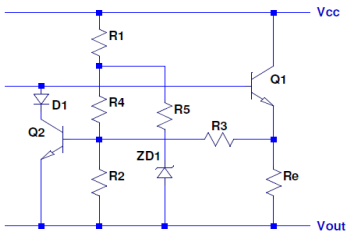


Ref: Michael Kiwanuka "SOA Protection of Linear Power Amplifiers" _Fig 28



Input
Result
Data sheet (approx)

Protected pairs N	1		Pmax(W) At Vout=0	105
Vcc	50.00	V		
Re	0.22	Ω		
R1	12000.00	Ω		0.203
R2	200.00	Ω		0.002
R3*	250.00	Ω		0.002
R4	2000.00	Ω		0.054
R5	470.00	Ω		0.002
Vz	10.00	V		
VbeQ2	0.6	V		
Izd1	0.002	A		

FIG 28

0.600 Check Eqn8
0.600 Check Eqn9

*For N protected pairs of o/p devices, R3 actual = R3xN

Vce	Ic	Vout
0.00	6.08	48.66
66.23	0.80	-16.40
99.95	0.21	-50.00

49.53	2.13	0.00	105.34
-------	------	------	--------

