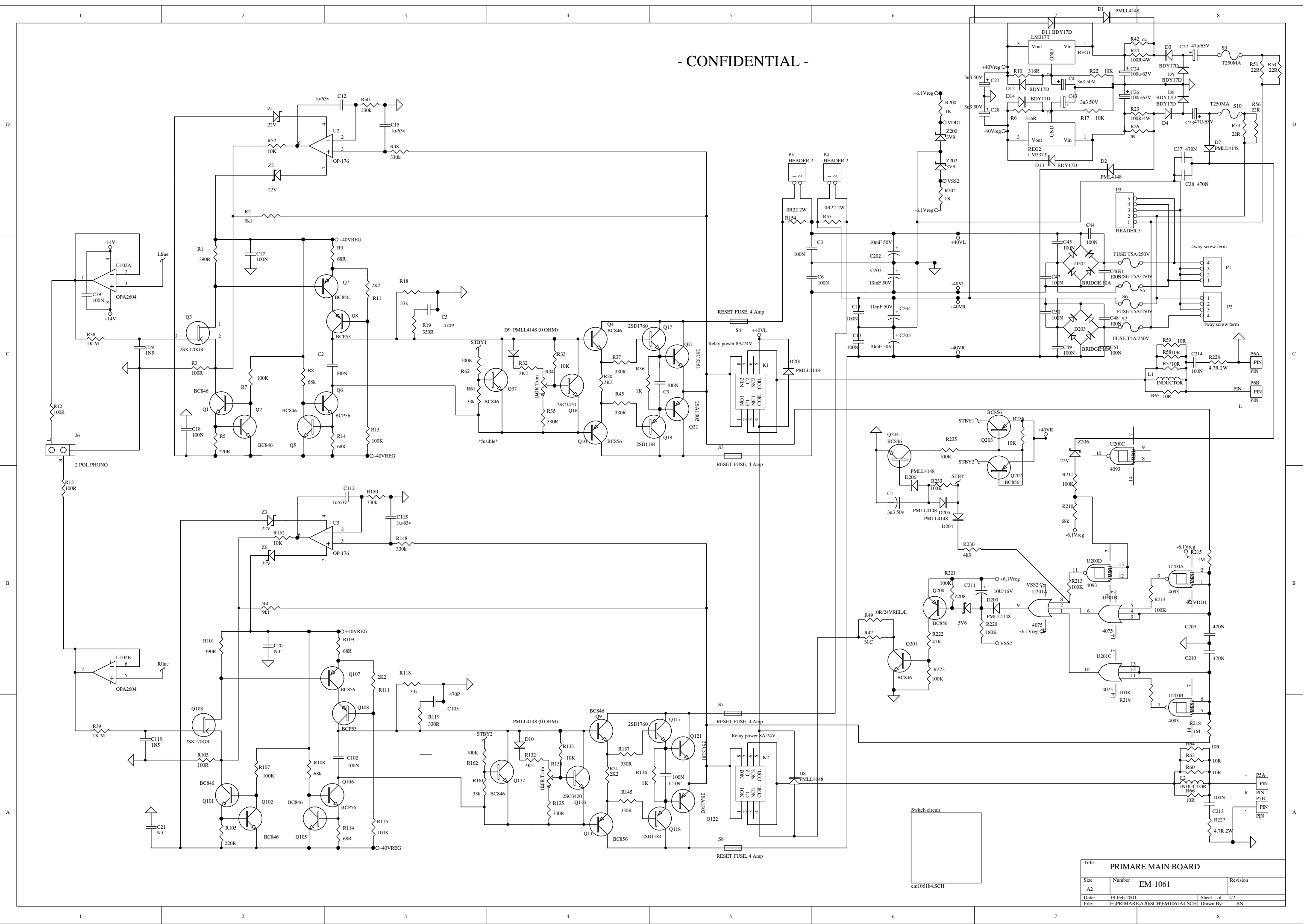


A20 MK2 INTEGRATED AMP SERVICE MANUAL

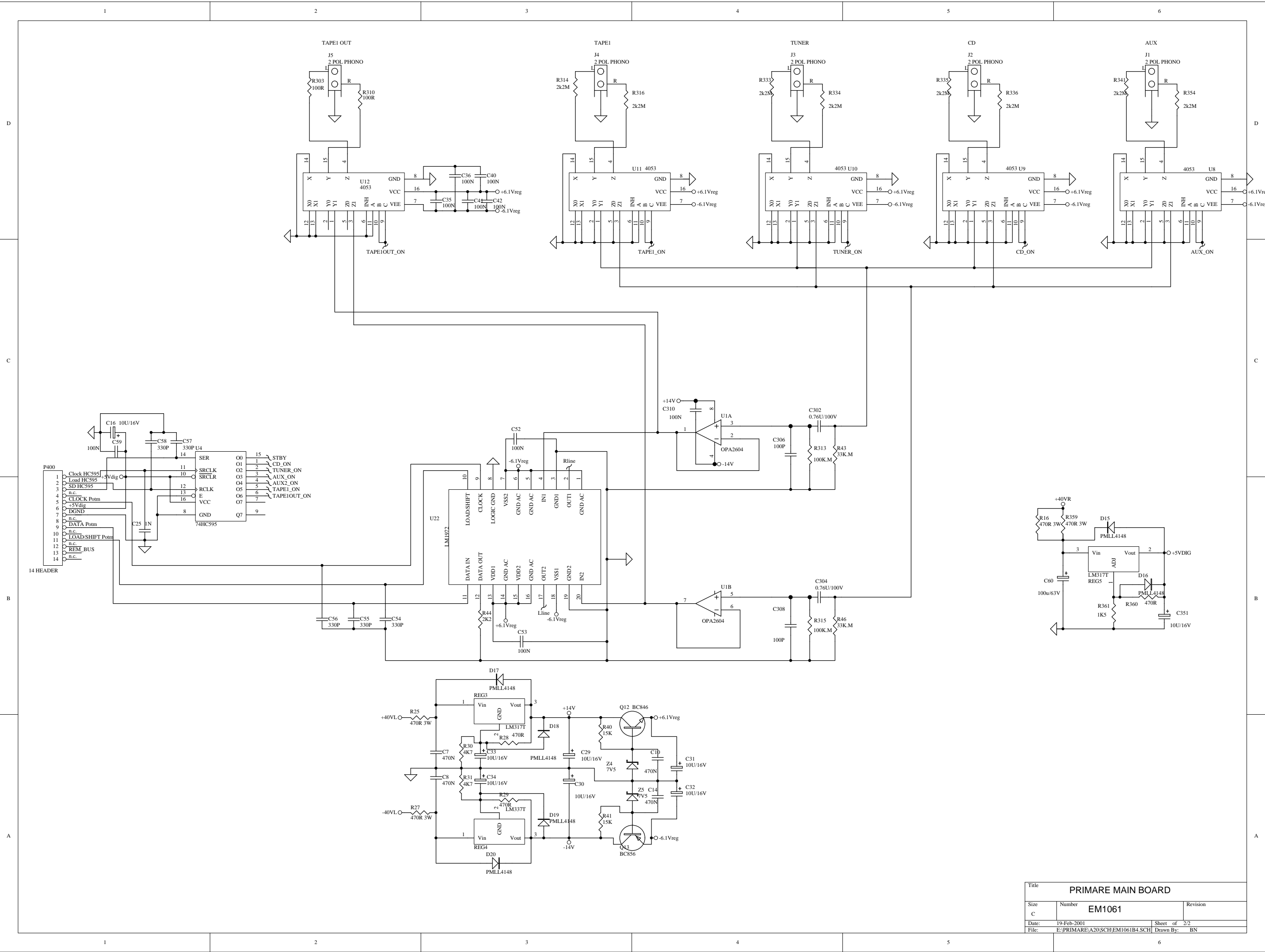
CONTENTS

1. CIRCUIT DIAGRAMS
2. ADJUSTMENT
3. TECHNICAL SPECIFICATIONS

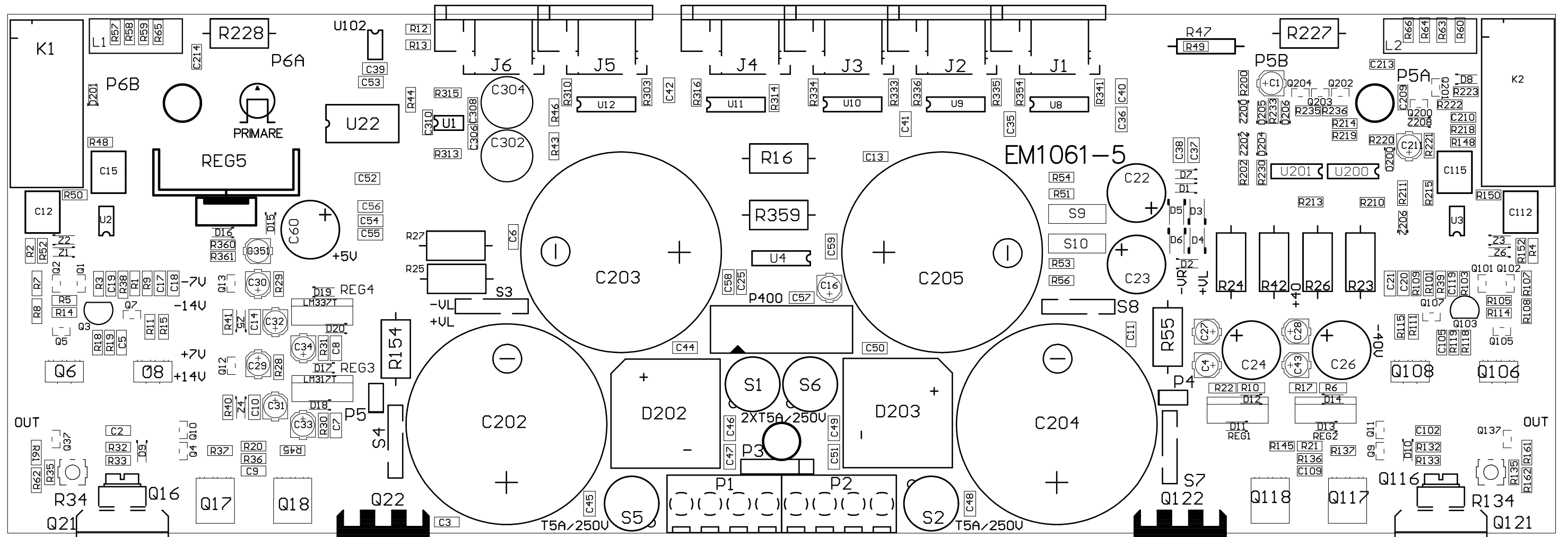
- CONFIDENTIAL -

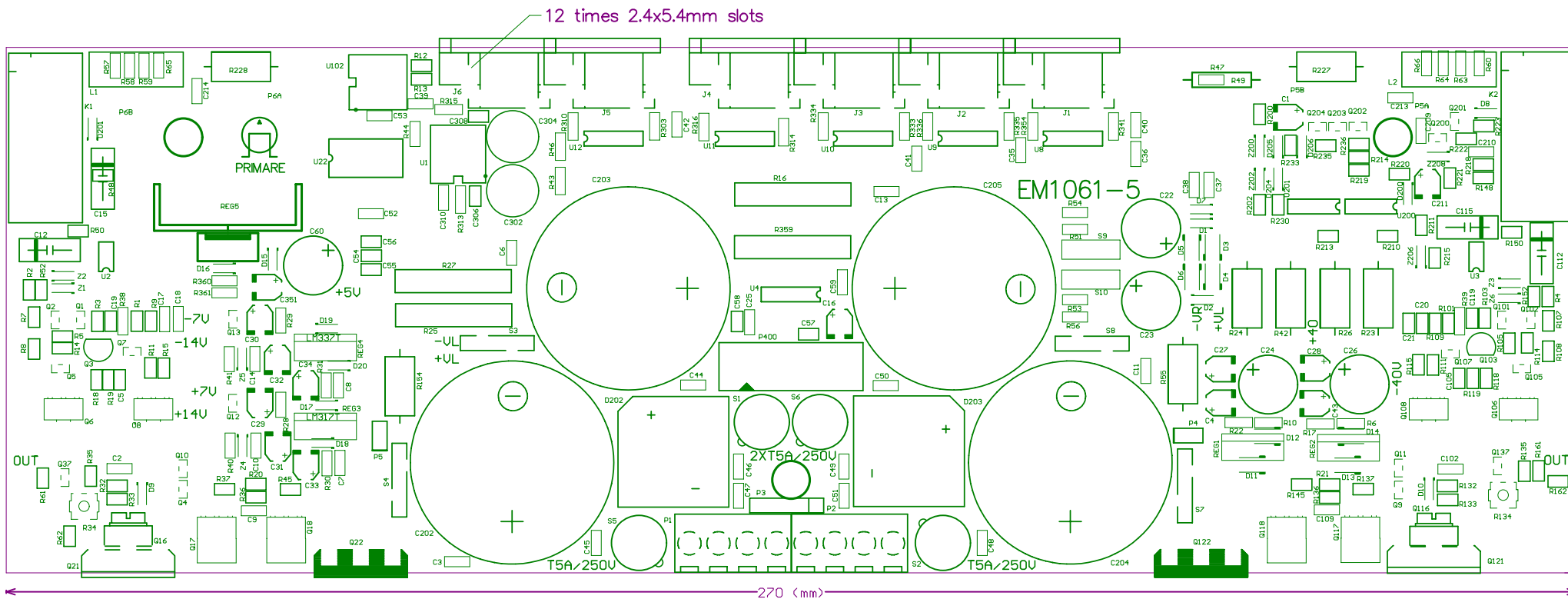


Title				PRIMARE MAIN BOARD			
Size		Number				Revision	
A2		EM-1061					
Date:		19-Feb-2001		Sheet of		1/2	
File:		E:\PRIMARE\A20\SCH\EM1061A4.SCH		Drawn By:		BN	

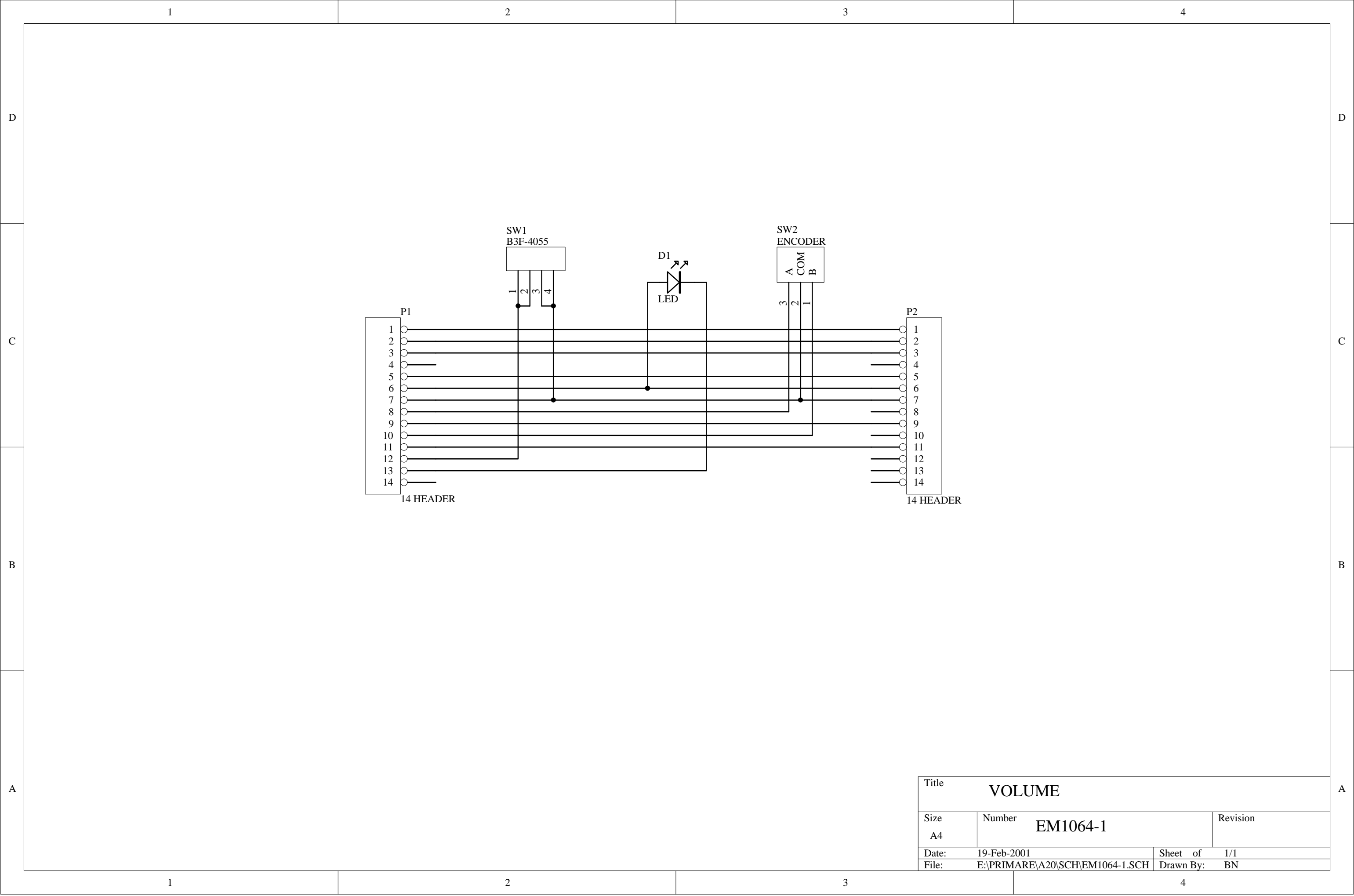


Title		
PRIMARE MAIN BOARD		
Size	Number	Revision
C	EM1061	
Date:	19-Feb-2001	Sheet of 2/2
File:	E:\PRIMARE\A20\SCH\EM1061B4.SCH	Drawn By: BN

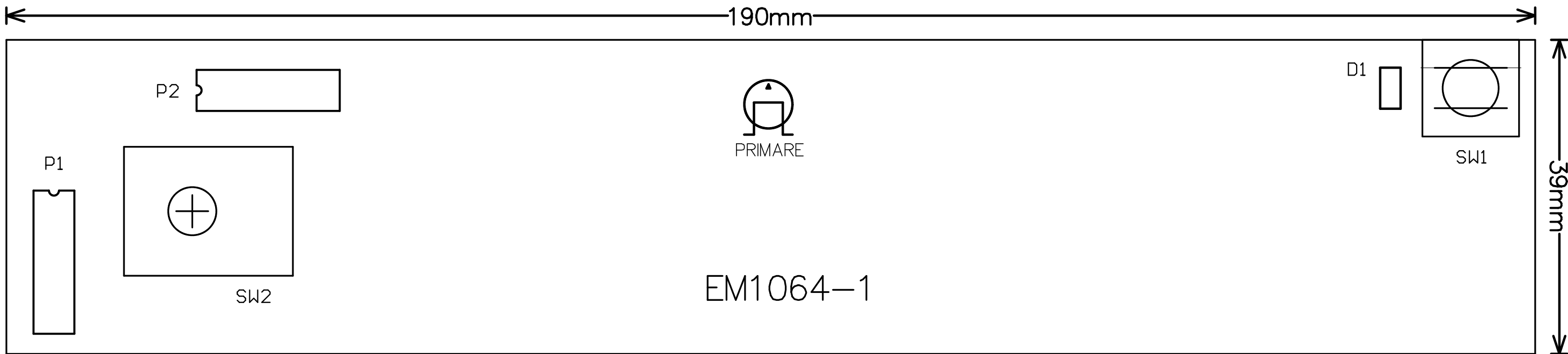


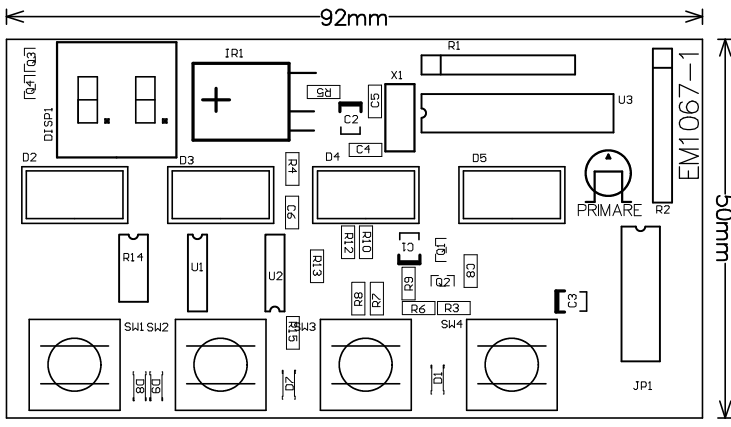


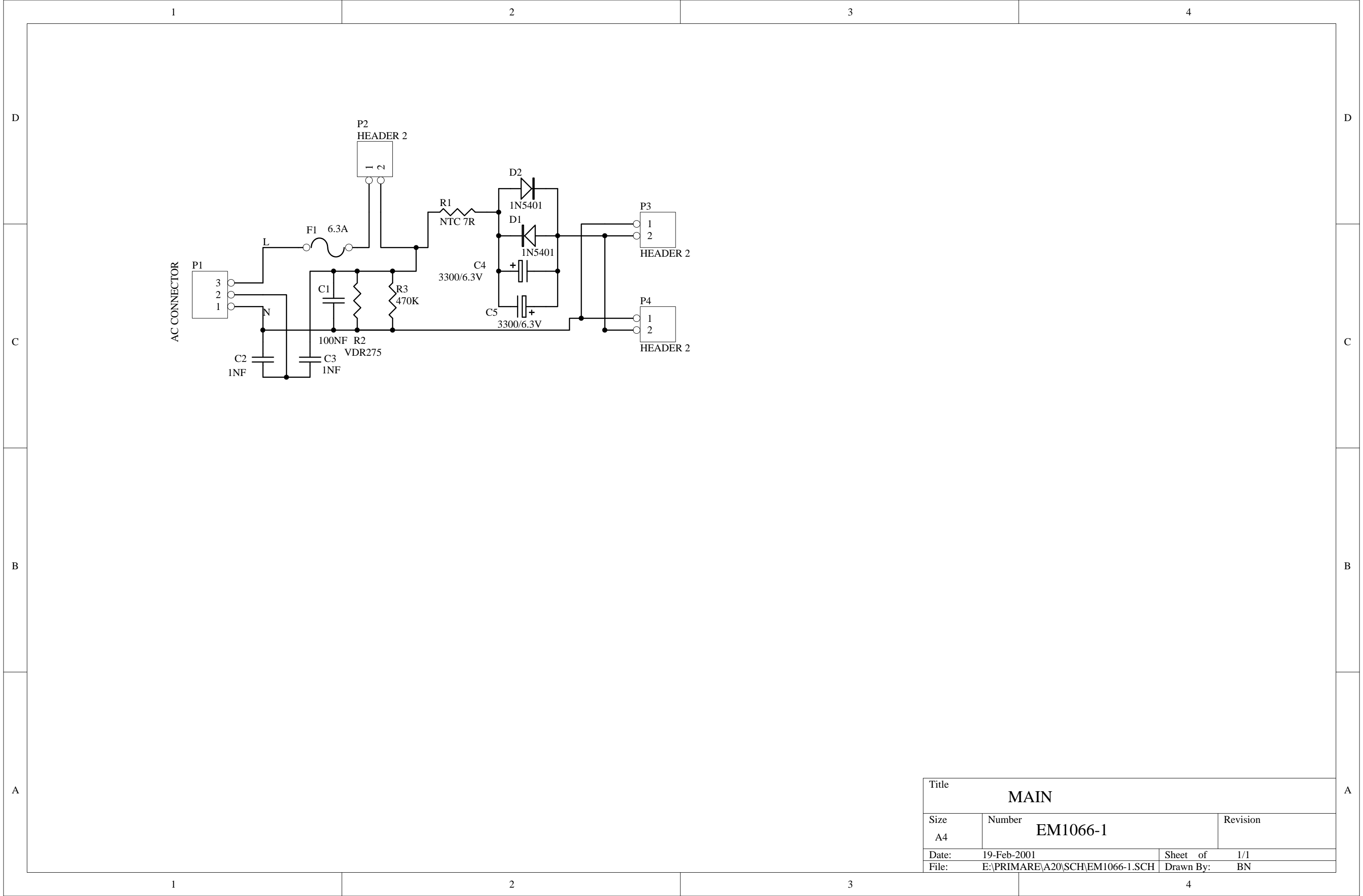
Mechanical Layer 1

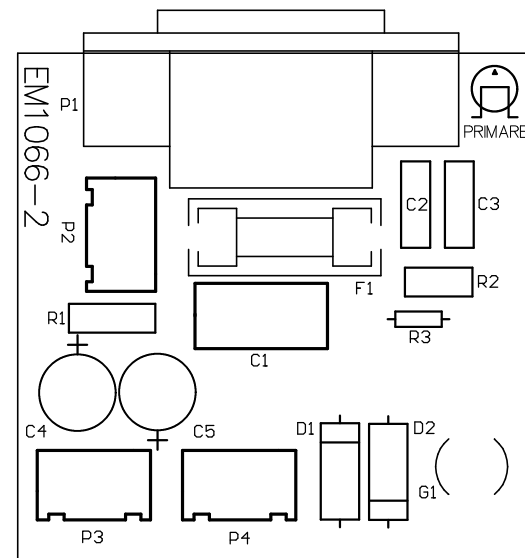


Title		VOLUME	
Size A4	Number EM1064-1		Revision
Date:	19-Feb-2001	Sheet of	1/1
File:	E:\PRIMARE\A20\SCH\EM1064-1.SCH	Drawn By:	BN









IDLE CURRENT ADJUSTMENT

- 1: Remove the jumper on P5 (P4)
- 2: Connect the voltmeter between pin 1 and pin 2 on P5
(pin 1 and pin 2 on P4)
ADJUST R34 (R134) TO 22mV
3. After the power has been on for 60 min
readjust R34 (R134)
4. Remove the voltmeter. And connect the jumper again.

Instructions apply to the Left channel.
Instructions given in brackets apply to the
Right channel.

TECHNICAL SPECIFICATIONS

Sensitivity RCA	300mV
Output power	2x70 W/8 ohm 2x110 W/4 ohm
Peak current	+/- 20A
Output impedance	0.08 ohm
Frequency response	<10HZ-100KHZ, -3db
Signal to noise A-weighted	98 dB
THD+noise	0.08%
Standby	<15 W
DIMENSIONS (WXDXH)	430X275X95 MM
Weight	12Kg