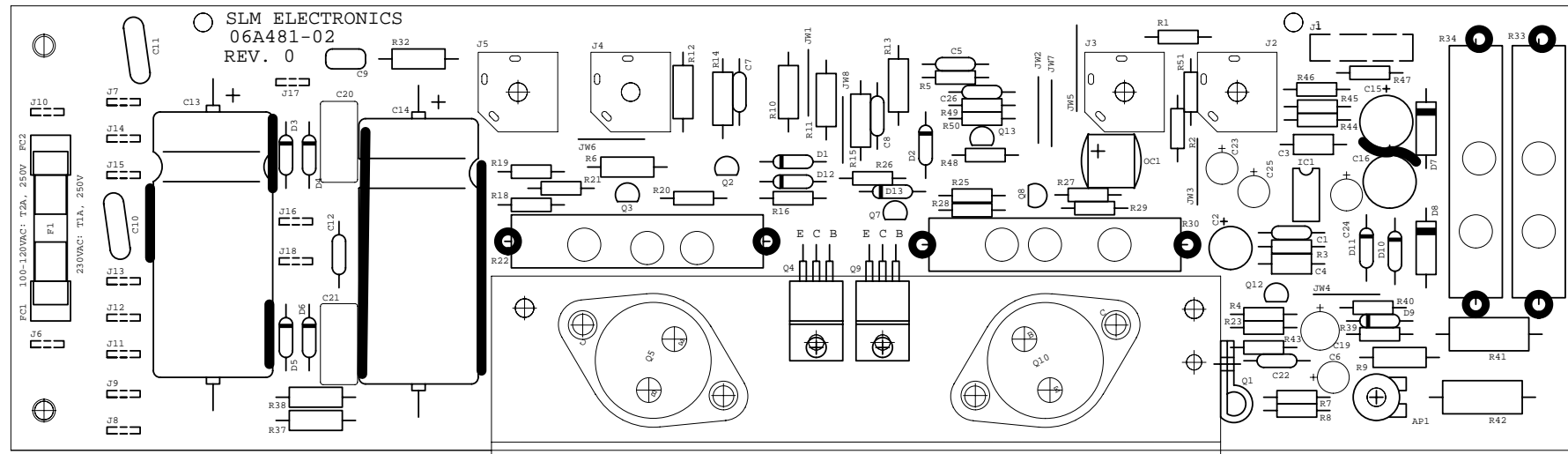


GOOP PARTS AS SHOWN (10W RES LEADS) PER STANDARD GOOPING PROCEDURE



REF DES	PART #	DESCRIPTION
AP1	71-501-02	500
C1	10A101-21	100pF 200V
C2	12R227-12	220uF 16V
C3	10A104-01	0.1
C4	10A104-01	0.1
C5	10A221-11	220pF 100V
C6	12R105-50	1uF 50V
C7	10A102-11	.001 100V
C8	10A102-11	.001 100V
C9	10R473-03	.047uF 100V
C10	10-332-01	.0033uF UL
C11	10-332-01	.0033uF UL
C12	10A103-11	.01 100V
C13	12-478-51	4700UF 35V
C14	12-478-51	4700UF 35V
C15	12R107-32	100uF 35V
C16	12R107-32	100uF 35V
C19	12R226-32	22uF 50V
C20	10F224-03	.22uF 100V
C21	10F224-03	.22uF 100V
C22	10A101-21	100pF 200V
C23	12R106-35	10uF 35V
C24	12R225-50	2.2uF 50V
C25	12R225-50	2.2uF 50V
C26	10A561-11	560pF 100V

REF DES	PART #	DESCRIPTION
D1	21A370-01	1N3070
D2	21A370-01	1N3070
D3	21A192-01	1N5392
D4	21A192-01	1N5392
D5	21A192-01	1N5392
D6	21A192-01	1N5392
D7	21-553-01	1N5353
D8	21-553-01	1N5353
D9	21A914-01	1N914
D10	21A145-01	1N4745
D11	21A145-01	1N4745
D12	21A914-01	1N914
D13	21A914-01	1N914
F1	23-312-01	2A SLOW BLO
FC1	23-926-02	CLIP
FC2	23-926-02	CLIP
IC1	37-072-01	TLO72
J1	17-310-05	5 PIN .156
J2	39-012-01	112APC JACK
J3	39-012-01	112APC JACK
J4	39-012-01	112APC JACK
J5	39-012-01	112APC JACK
J6-J18	17-836-01	.25" TAB
OC1	66-100-01	VTL5C7 OPTO

REF DES	PART #	DESCRIPTION
Q1	96-342-01	2N3402
Q2	96R006-01	MPSA06
Q3	96R056-01	MPSA56
Q4	96-032-03	TIP-32C
Q5	96-102-01	MJ15002
Q7	96R056-01	MPSA56
Q8	96R006-01	MPSA06
Q9	96-031-03	TIP31C
Q10	96-355-01	2N3055
Q12	96R112-01	J112
Q13	96R006-01	MPSA06
R1	76-681-01	680
R2	76-103-01	10K
R3	76-683-01	68K
R4	76-331-01	330
R5	76-682-01	6.8K
R6	77-103-01	10K 1/2W
R7	76-332-01	3.3K
R8	76-471-01	470
R9	77-103-01	10K 1/2W
R10	77-221-01	220 1/2W
R11	77-221-01	220 1/2W
R12	77-221-01	220 1/2W
R13	77-221-01	220 1/2W
R14	77-472-01	4.7K 1/2W
R15	77-472-01	4.7K 1/2W
R16	76-101-01	100
R18	76-221-01	220

REF DES	PART #	DESCRIPTION
R19	76-183-01	18K
R20	76-220-01	22
R21	76-821-01	820
R22	78-330-10	.33 10W
R23	76-104-01	100K
R25	76-101-01	100
R26	76-183-01	18K
R27	76-221-01	220
R28	76-220-01	22
R29	76-821-01	820
R30	78-330-10	.33 10W
R32	77-100-01	10 1/2W
R33	78-121-10	120 10W
R34	78-121-10	120 10W
R37	77-822-01	8.2K 1/2W
R38	77-822-01	8.2K 1/2W
R39	76-224-01	220K
R40	76-472-01	4.7K
R41	78-471-01	470 1W
R42	78-471-01	470 1W
R43	76-333-01	33K
R44	76-272-02	2.74K 1%
R45	76-272-02	2.74K 1%
R46	76-272-02	2.74K 1%
R47	76-272-02	2.74K 1%
R48	76-223-01	22K
R49	76-752-01	7.5K
R50	76-182-01	1.8K
R51	76-100-01	10
JW1-JW8	76-000-05	JUMPER WIRE

PART #	DESCRIPTION, WHERE USED
QTY 3 30-408-52	#4 SCREW , BIAS & DRIVERS
QTY 3 30-442-52	#4 NUT , BIAS & DRIVERS
QTY 4 30-638-53	#6 SCREW , HEATSINK MTG, STANDOFF
QTY 4 30-639-52	#6 SCREW , MTG OUTPUT TRANSISITORS
QTY 6 30-700-01	#6 NUT, MTG OUTPUT TRANS, HEATSINK
QTY 2 35-003-02	OUTPUT TRANS INSULATORS
QTY 2 35-043-01	NYLON BUSHING TO-220
QTY 2 35-579-01	TO-220 INSULATORS
QTY 2 85-133-01	15/16" STANDOFF
QTY 1 33-281-01	PA-4 HEATSINK BRKT
QTY 1 06a481-02	PA4a PC BOARD

SIGNATURES:		DATE:	11880 BORMAN DR.	
DRAWN:	REM	10/8/98	ST. LOUIS, MISSOURI	
CHK'D:	BARRY	10/9/98	63146	
APP'D:	DJR	10/9/98	PROJECT NAME:	
			PA4a	
ORIGINAL ISSUED:		10/9/98	DRAWING NAME:	
PLOT DATE:		12-11-98	POWER_AMP_ASSEMBLY\GOOPED_PARTS	
PLOT TIME:		00:00	DRAWING NO.	07P481-02
FILE NAME:		48102B0_	SCALE:	NONE
			SHEET:	1_OF_1
			REV.	0_