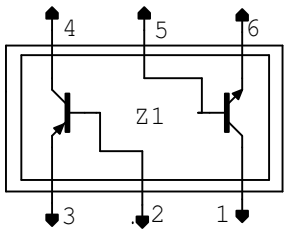


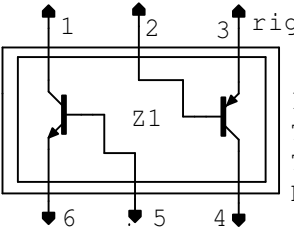
Short-Protect

left channel

Cyrus III Power Amp



IMZ1A (Rohm)



right channel: same circuit, but T2nn R2nn C2nn  
 IMZ1A = 2SA1037/2SC2412 Marking Code: Z1  
<http://www.alldatasheet.com/datasheet-pdf/pdf/ROHM/IMZ1A.html>  
 T103,T104,T109:BC846, Marking code "1 13"  
 T101,T102,T110:BC856, Marking code "3 13"  
 Please note: matched versions to UBE and hfe

\* relace it through larger versions