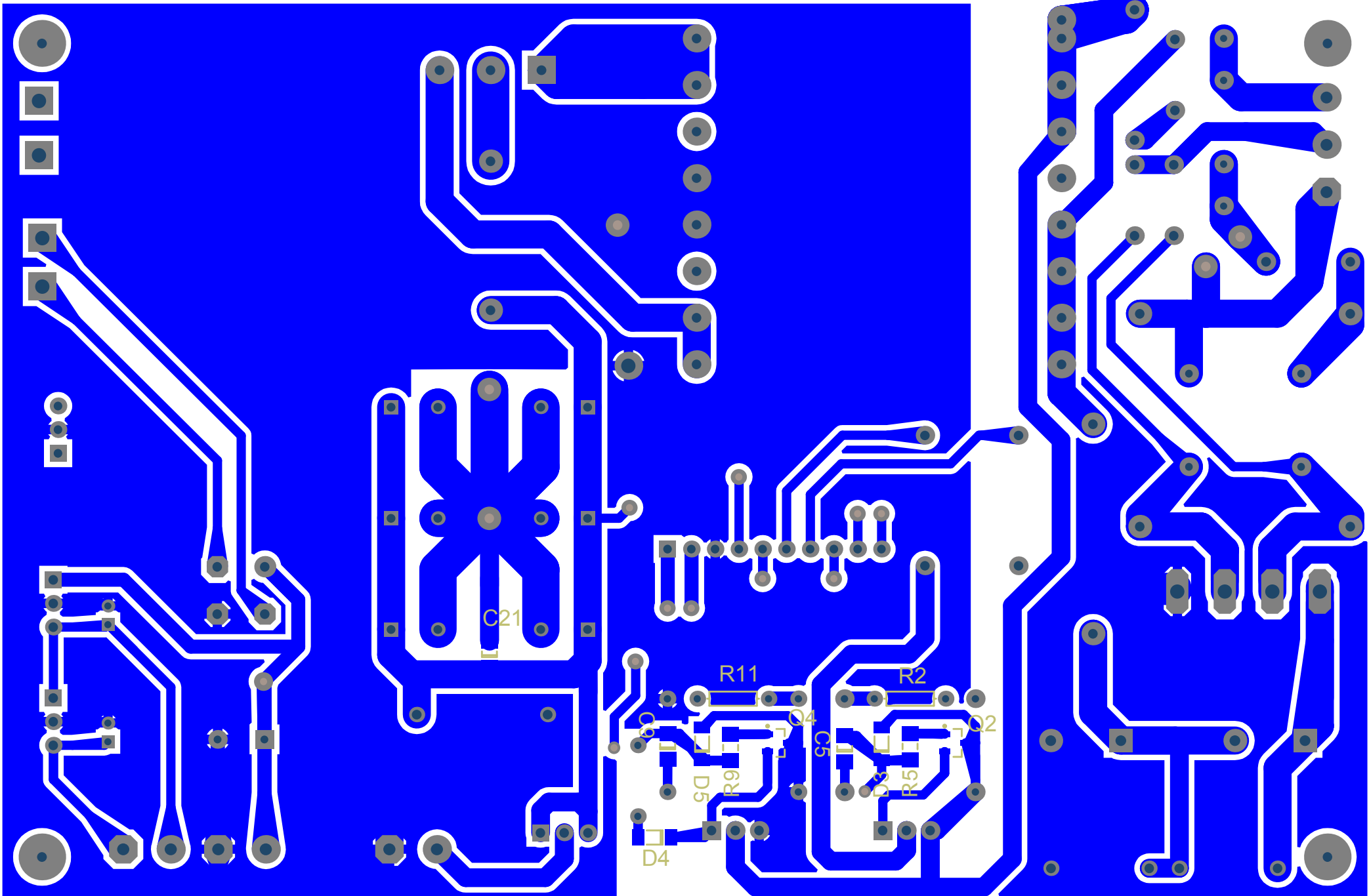
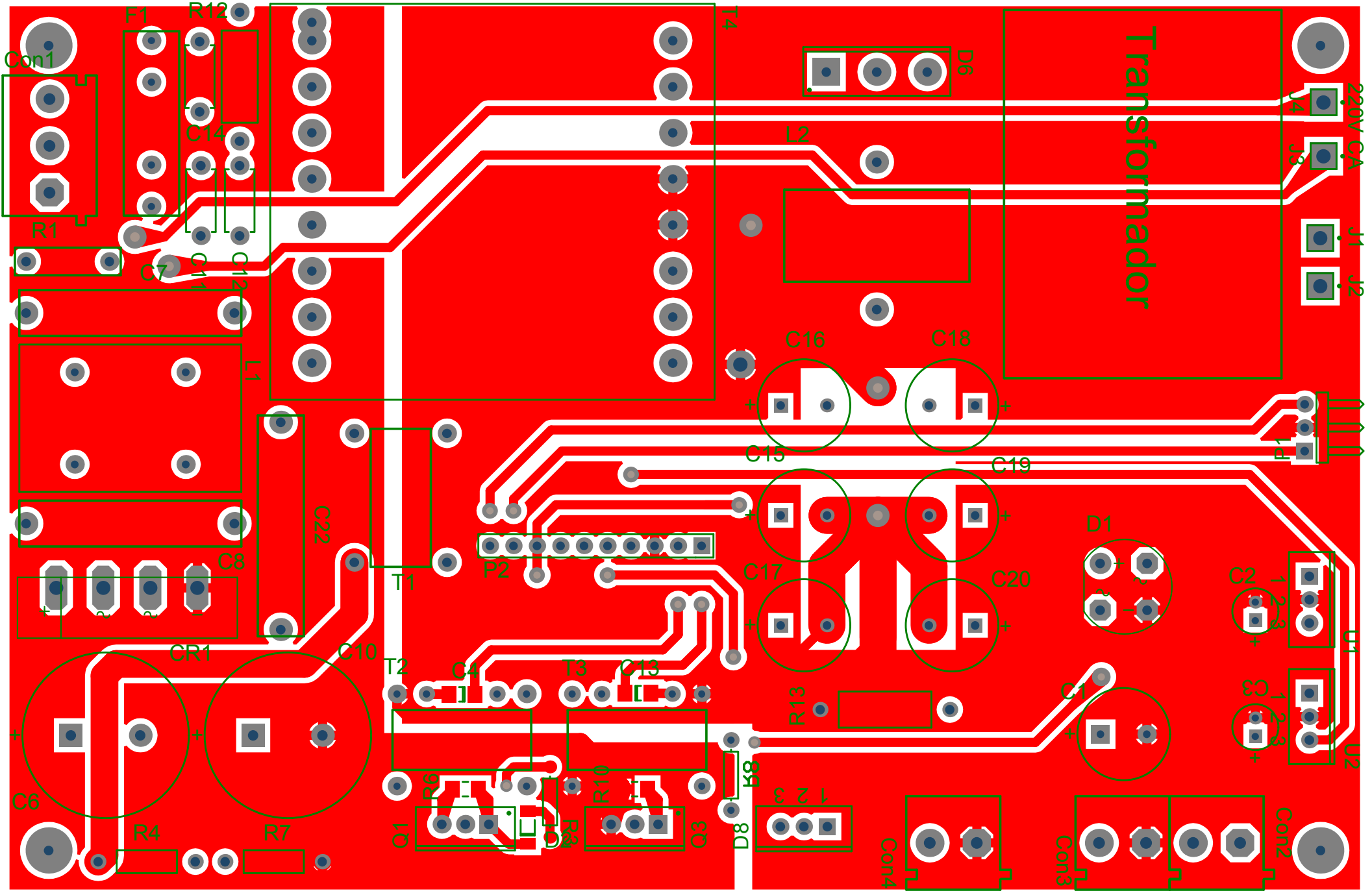


Title		
Size A3	Number	Revision
Date: 06/11/2014	Sheet of	
File: D:\Dropbox\Half-Bridge.SchDoc	Drawn By:	





Transformador

220V CA

J1 J2

1 2 3 4

U1

U2

Con2

Con1

F1

R12

R1

C14

C7

C12

L1

C8

CR1

C22

C6

R4

R7

C10

T1

C4

T3

C13

P2

C15

C17

C16

C18

C19

C20

R13

D8

K8

1 2 3

Con4

Con3

Con2

C2

C3

D1

D6

L2

T4

J4

J8

1 2 3 4

1 2 3

1 2 3

1 2 3

Comment	Description	Designator	Footprint	LibRef	Quantity
Cap 10mm diam.	Solid Aluminum Capacitor with Organic Semiconductor Electrolyte: 150uF, 6.3V, Bulk Pack	C1	F'	94SL157X06R3FBP	1
5mm Cap. 16V	Solid Aluminum Capacitor with Organic Semiconductor Electrolyte: 10uF, 10V, Bulk Pack	C2, C3	B	94SC106X0010BBP	2
SMD	Ceramic Chip Capacitor - Standard	C4, C5, C9, C13, C21	1206	C1206	5
470uF - 200V	Aluminum Electrolytic Capacitor, Radial Style with Long Leads: 220uF, 200V	C6, C10	CAPPR7.5-18X35.5	EKA00KL322S00	2
Capacitor Poliester 1uF 250V	Capacitor Poliester 1uF 250V	C7, C8, C22	Capacitor Poliester 1uF 250V	Capacitor Poliester 1uF 250V	3
2.2nF 1KV	Dipped Radial Multilayer Ceramic Capacitor X7R: 100nF, 500V	C11, C12, C14	VP52-3.2	VP44BY104JE	3
EKA00DE347H00	Aluminum Electrolytic Capacitor, Radial Style with Long Leads: 470uF, 50V	C15, C16, C17, C18, C19, C20	CAPPR5-10X20	EKA00DE347H00	6
CON3 pin Green	Connector green screw	Con1	My_CN3	CON3 pin Green	1
CON2 pin blue	Connector blue screw	Con2, Con3, Con4	My_CN2	CON2 pin blue	3
KBU6M	BRIDGE KBU 6 Amp	CR1	My_KBU	BRIDGE KBU	1
BRIDGE	Diode Bridge 1 Amp	D1	My_bridg	BRIDGE	1
1N4148	High Conductance Fast Diode	D2, D3, D4, D5	SOD80C	1N4148	4
MUR1640	ULTRAFAST RECTIFIERS 16 AMPERES, 100-600 VOLTS	D6	TO-247AC	MUR1640	1
MBR2045CT	Diode Schottky 45V 20A	D8	MUR1640	MUR1640	1
Fuse	Fusible	F1	Fusible 20mm	Fusible	1
Transformador	Socket	J1, J4	PIN1	Socket	2
Socket	Socket	J2, J3	PIN1	Socket	2
Filtro de linea 3.3mH	Filtro de linea 3.3mH	L1	Filtro de linea 3.3mH	Filtro de linea 3.3mH	1
Inductor Toroidal	Inductor Toroidal 25x15x10mm	L2	Inductor Toroidal Vertical (2 contactos)	Inductor Toroidal 25x15x10mm	1
Comunicacion	Header, 3-Pin, Right Angle	P1	HDR1X3H	Header 3H	1
Header 10	Header, 10-Pin	P2	HDR1X10	Header 10	1
IRF840	HEXFET N-Channel Power MOSFET	Q1, Q3	TO-220AB	IRF840	2
BC807-25	PNP General Purpose Amplifier	Q2, Q4	SOT-23A_N	BC807-25	2
NTC	NTC	R1	NTC 9mm	NTC	1
Res1	Resistor	R2, R3, R8, R11	AXIAL-0.3	Res1	4
Resistencia 1W Metal Fin	Resistencia 1W Metal Fin	R4, R7	Resistencia 1W Metal Fin	Resistencia 1W Metal Fin	2
SMD	Low Ohmic Value Thick Film Chip Resistor, 0.22 Ohm to 9.1 Ohm Range, 1%, 2% and 5% Tolerance, 1206 Size, 0.33 W	R5, R6, R9, R10	8RB-1206	ERJ8BQ	4
Resistencia 2W Metal Fin	Resistencia 2W Metal Fin	R12, R13	Resistencia 2W Metal Fin	Resistencia 2W Metal Fin	2
Relacion 1:5	Transformador de corriente	T1	Transformador de Corriente 15mm (Vertical)	Transformador de corriente	1
Transformador Driver	Transformador de corriente	T2, T3	Transformador de Corriente 15mm (Vertical)	Transformador de corriente	2
EE 42/21/20 Core	EE 42/21/20 Core	T4	EE 42/21/20 Core	EE 42/21/20 Core	1
MC7812ACT	3-Terminal Positive Fixed Voltage Regulator	U1	221A-04	MC7812ACT	1
MC7805ACT	3-Terminal Positive Fixed	U2	221A-04	MC7805ACT	1