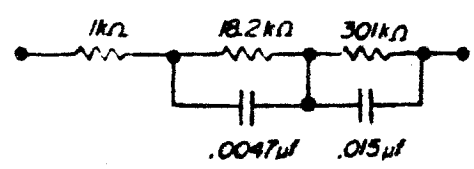


NSIO PHONO STAGE  
 IDENTICAL EXCEPT  
 \* 220µF REPLACED BY 47µF  
 \* 47.5Ω REPLACED BY 1kΩ  
 \* 18.2kΩ REPLACED BY 47.5kΩ  
 NO RELAY  
 \* 4.75kΩ REPLACED BY  
 EQUALIZATION CIRCUIT BELOW:



### THRESHOLD NSIO

HIGH LEVEL PREAMPLIFIER STAGE