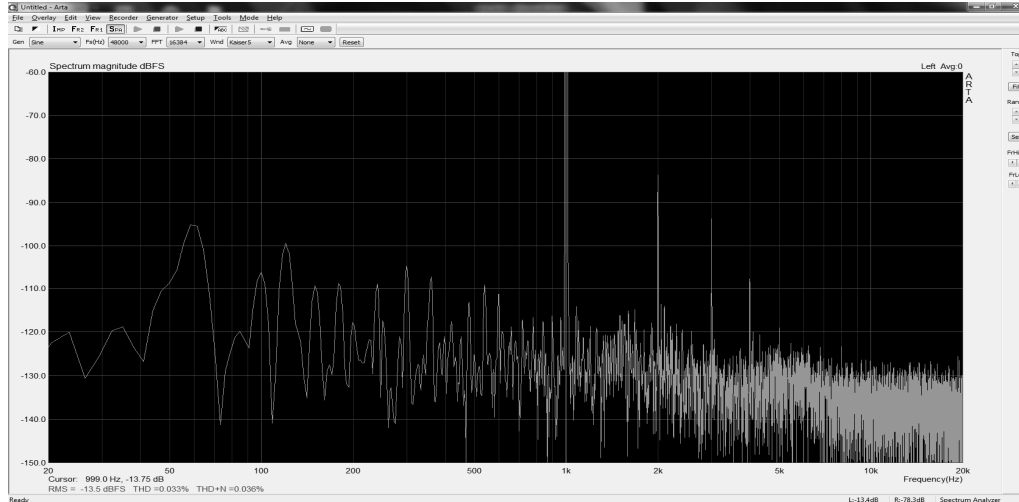
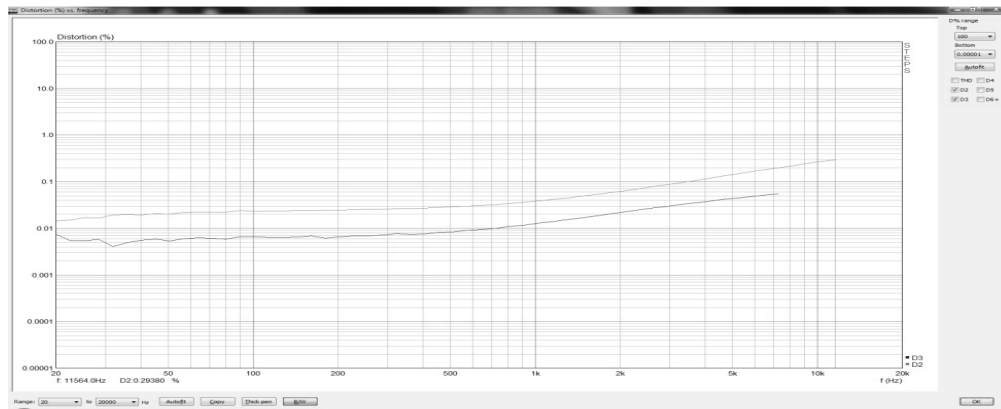


## Aleph J

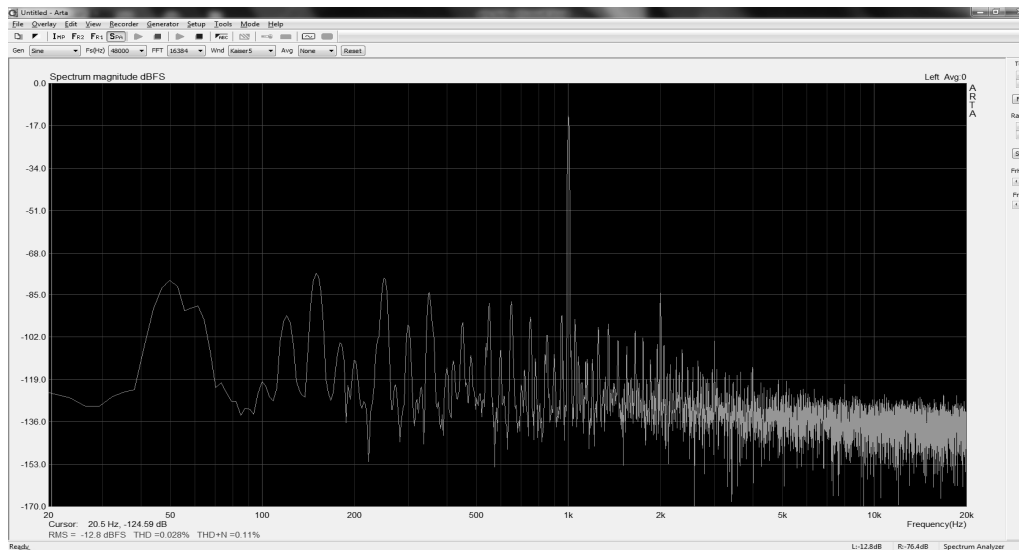
**Distortion** (amp o/p at 2.8V rms into 10R resistive load, 690 mV fed to soundcard i/p using a 47k+15k resistive divider)



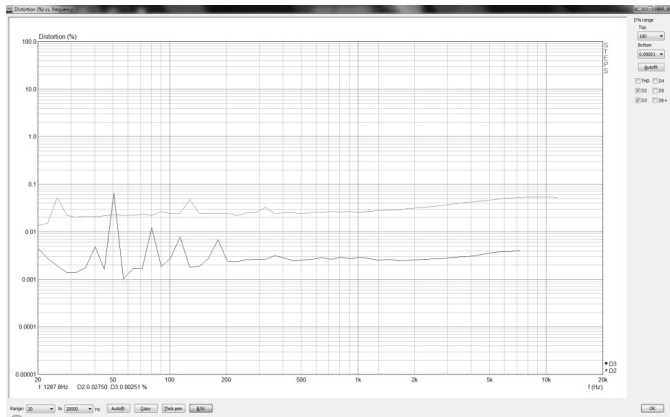
**Aleph J Harmonic Distortion** (amp o/p at 2.8V rms into 10R resistive load, 690 mV fed to soundcard i/p)



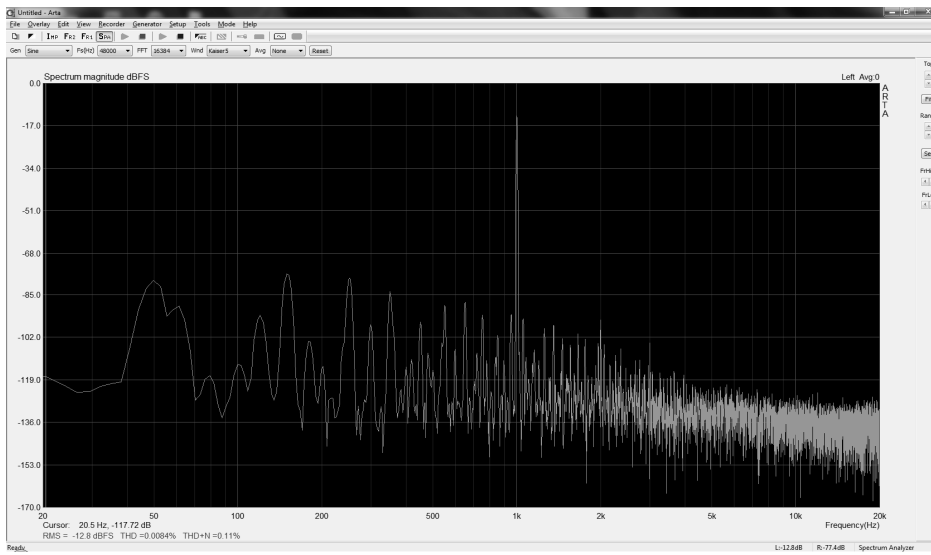
**F5T V2 --P3 @mid --Distortion** (amp o/p at 2.8V, 690 rms into 10R resistive load mV fed to soundcard i/p)



**F5T V2 --P3 @mid --Harmonics** (amp o/p at 2.8V rms into 10R resistive load, 690 mV fed to soundcard i/p)



**F5T V2 --P3 +2.5 CCW--Distortion** (amp o/p at 2.8V, 690 rms into 10R resistive load mV fed to soundcard i/p)



**F5T V2 --P3 +2.5 CCW--Distortion** (amp o/p at 2.8V, 690 rms into 10R resistive load mV fed to soundcard i/p)

