



16mm Metal Shaft Rotary Potentiometer – With Switch

S16KN/5PIN

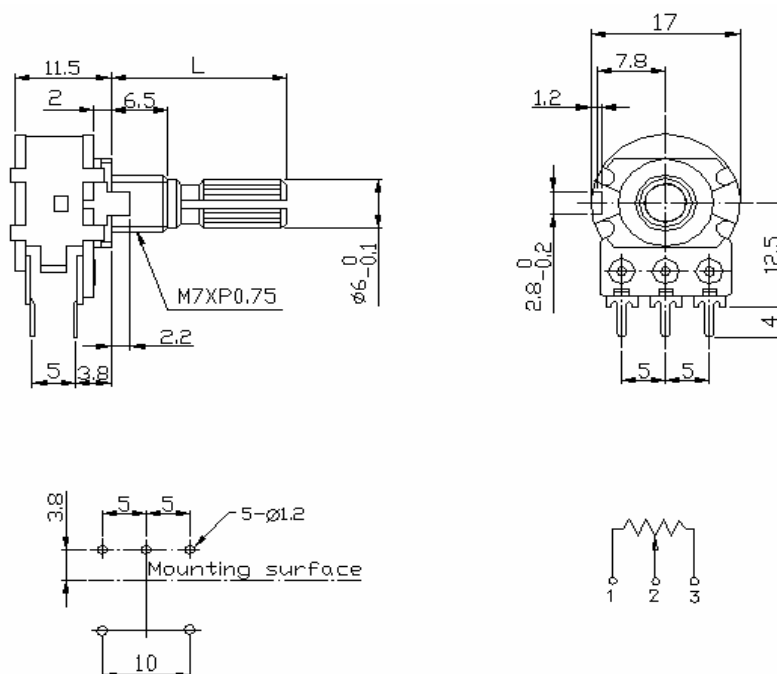


Part Number

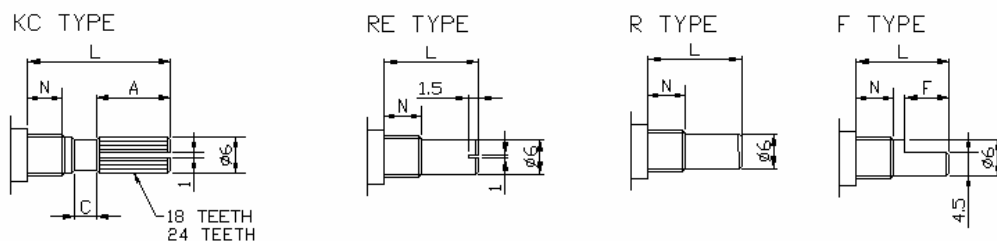
S16KN/5pin - B 50K, L - 20 KC

Taper Resistance Value Shaft Length Shaft Type

Dimensions



Shaft Type



N:6.5m/m

SHAFT-TYPE	L	10	15	20	25	30	35	40
KC	A	2.2	6	10	12	12	12	12
	C	0.5	1	2	2	4	4	4
F	F	2.5	7	12	12	12	12	12
R,RE	L	10	15	20	25	30	35	40



16mm Metal Shaft Rotary Potentiometer – With Switch

Electrical Characteristics

Total Resistance	500 Ω ~ 2M Ω				
Total Resistance Tolerance	$\pm 20\%$ (More than 1M $\Omega \pm 30\%$)				
Resistance Taper	A. B. C. D. W. Taper				
Resistance Taper Characteristics	A50%	B50%	C50%	D50%	W50%
	15-25%	40-60%	75-85%	2-15%	45-55%
Rated Power	B Taper: 0.2 W; Other Tapers: 0.1 W				
Max. Operating Voltage	B Taper: AC200V; Other Tapers: AC150V				
Residual Resistance	$R \geq 250K \Omega$ 0.1%				
	$250K \Omega > R > 10K \Omega$ 10 Ω Max. (between Term. 1, 2)				
	$10K \Omega \geq R$ 10 Ω Max. (between Term. 2, 3)				
Noise	47 mV max.				
Insulation Resistance	DC 500V 100M Ω				
Withstand Voltage	1 minute AC 500V				
Rotational Life	15,000 Cycles				
Switch Life	10,000 Cycles				

Mechanical Characteristics

Total Rotational Angle	300° \pm 5°
Rotational Torque	30~200gf.cm
Pull-Push Strength	7 kgf.cm max./3 minute.
Center Click Torque	150~350g.cm
Switch Circuit	S.P.S.T
Switch contact resistance	Less than 0.5m Ω
Solder Heat Resistance	300°C, 3s (Only For Hand-Soldering)
Remark	Shaft: Cast Iron (Aluminum Zinc) Bushing Material: cast iron