

Type Number: D2608-913000

Features:

This tweeter is ideal for use in applications including home entertainment, studio monitors, and general hi-fi systems.

Key features:

- Very light, low mass soft dome diaphragm with high internal damping
- Highly-optimized, Low-compression Magnet System with Double magnets
- Magnetic fluid
- Fully Vented Motor System
- Low resonance Frequency
- Black Die-Cast Aluminium Face Plate
- 8 ohm



Specs:

Electrical Data

Nominal impedance	Zn	8	ohm
Minimum impedance	Zmin	6,6 / 58	ohm
Maximum impedance	Zo	11	ohm
DC resistance	Re	5,6	ohm
Voice coil inductance	Le	0,0	mH

T-S Parameters

Resonance Frequency	fs	700	Hz
Mechanical Q factor	Qms	-	
Electrical Q factor	Qes	-	
Total Q factor	Qts	-	
Force factor	Bl	-	Tm
Mechanical resistance	Rms	-	Kg/s
Moving mass	Mms	-	g
Suspension compliance	Cms	-	mm/N
Effective cone diameter	D		cm
Effective piston area	Sd	7,00	cm ²
Equivalent volume	Vas	-	ltrs
Sensitivity (2.83V/1m)		91,26	dB

Power Handling

100h RMS noise test (IEC)	-	W
Long-term Max Power (IEC18.3)	-	W
Max linear SPL (rms) @ power		dB/W
Short-term Max Power (IEC18.2)		W

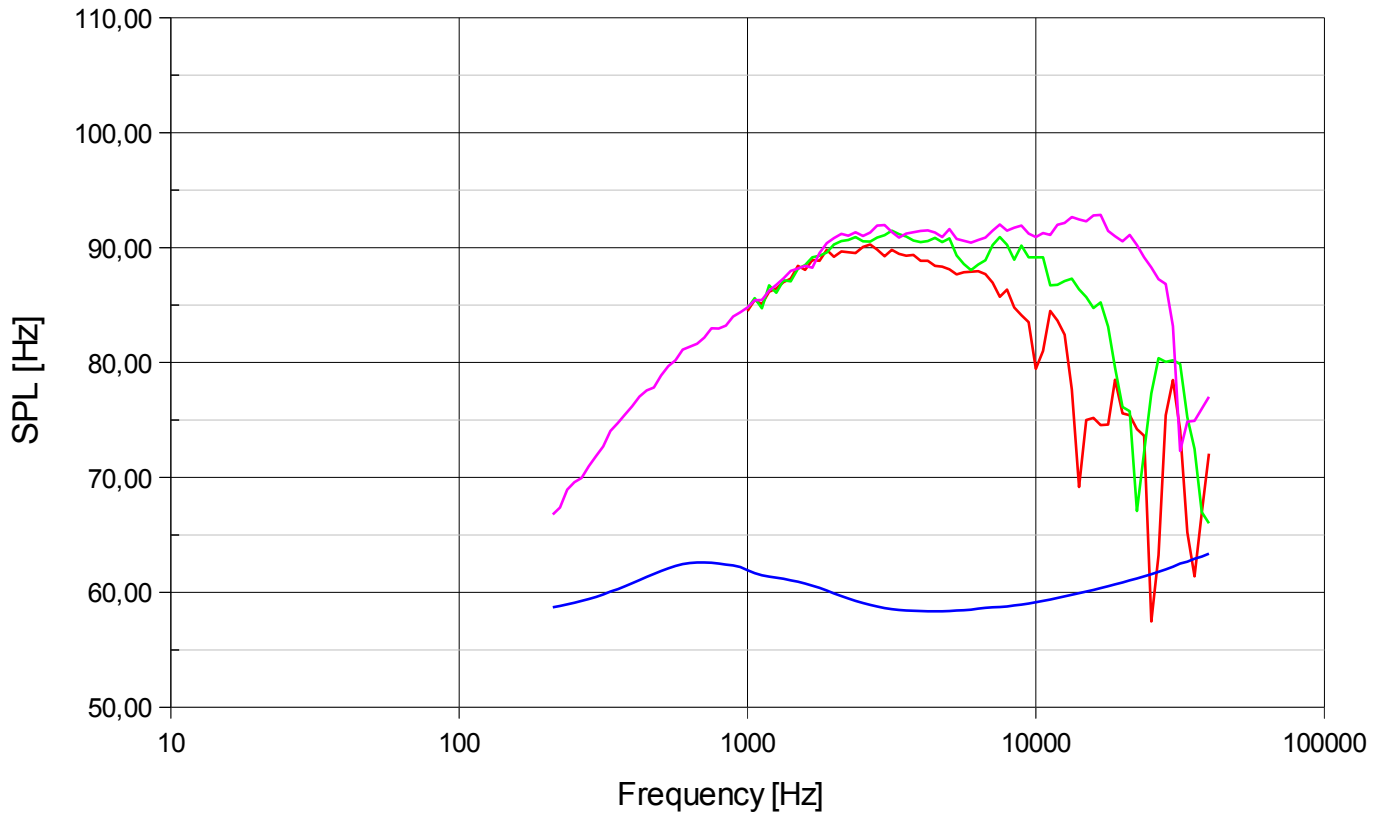
Voice Coil and Magnet Parametres

Voice coil diameter	26,0	mm
Voice coil height	1,5	mm
Voice coil layers	2,0	
Height of gap	2,5	mm
Linear excursion +/-	0,5	mm
Max mech. Excursion +/-	-	mm
Flux density of gap		mWb
Total useful flux		mWb
Diameter of magnet	72,0	mm
Height of magnet	22,0	mm
Weight of magnet	-	Kg
Unit net weight	-	Kg

Notes:

IEC Specs refer to IEC 60268,5 third sdition.
All Scan Speak products are RoHS compliant

Frequency:



Mechanical Dimensions:

