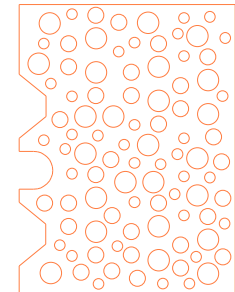
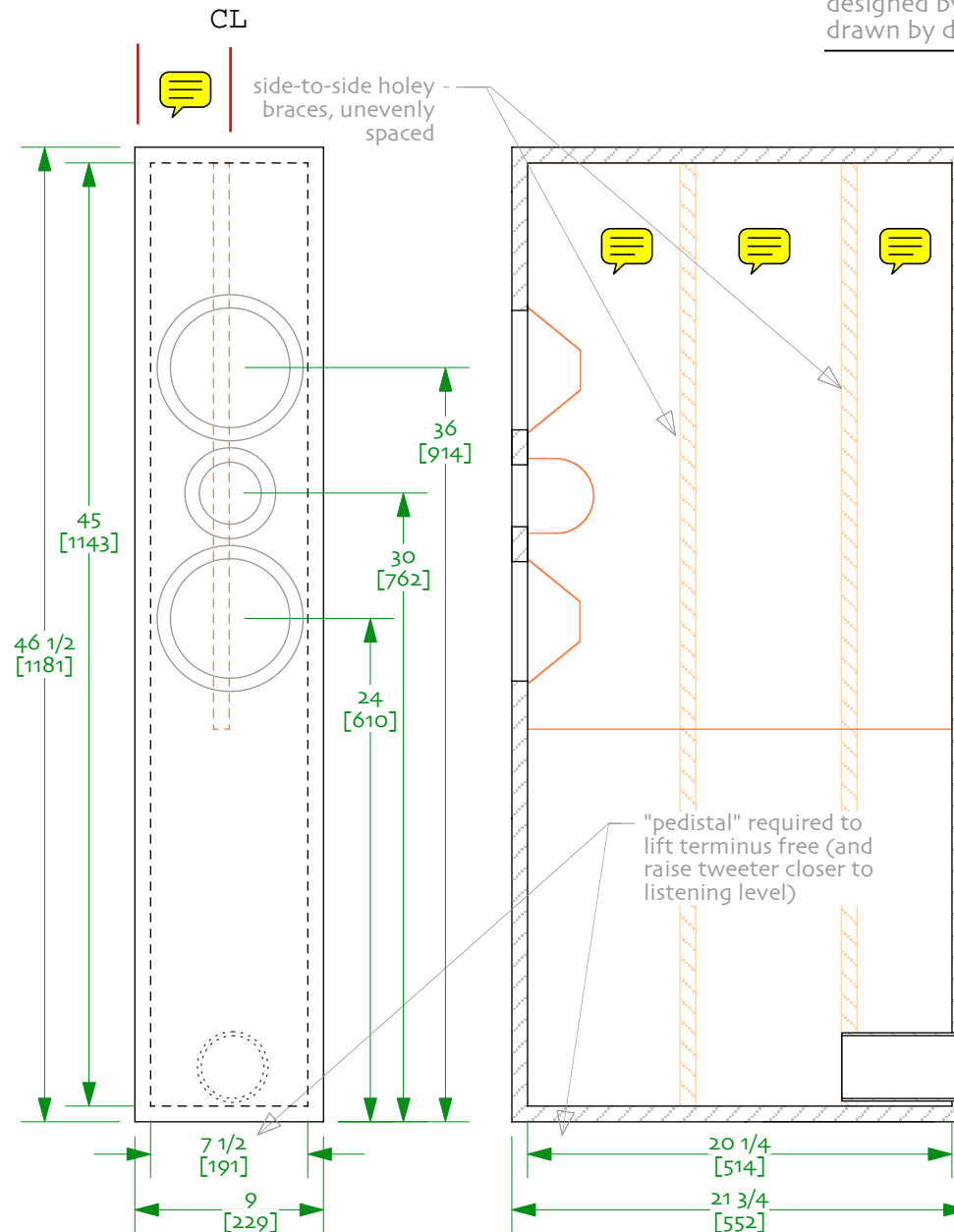
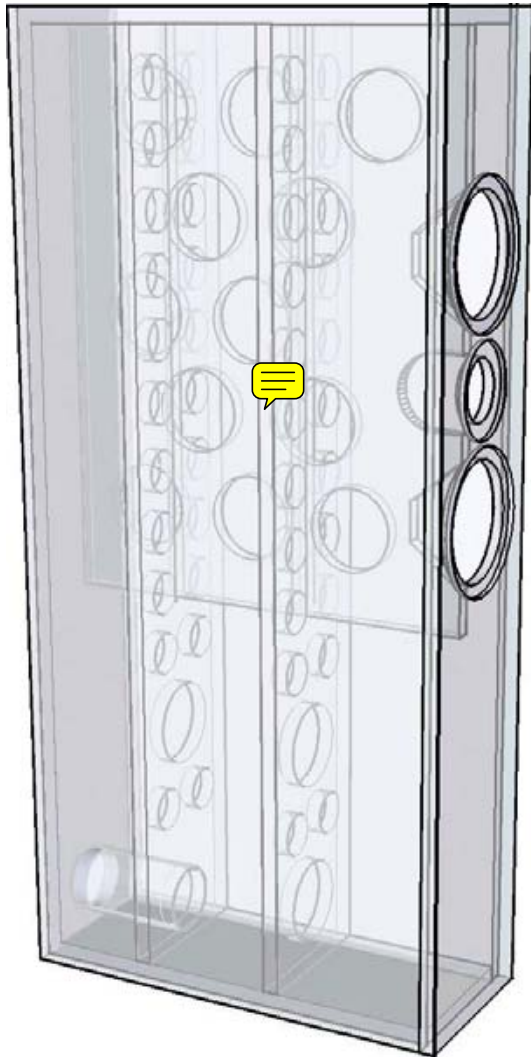


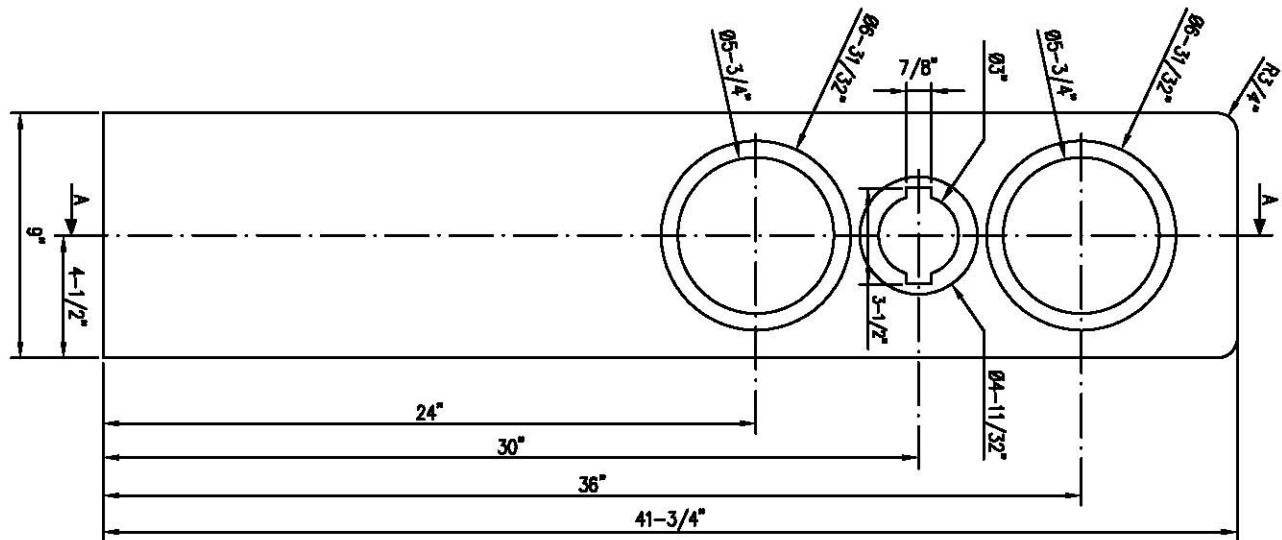
SHORT THOR ML-TL

15-october-05 / updated 07-nov-07
 inspired by diyAudio.com
 designed by Scottmoose
 drawn by dld



NOTES:

- 1/ drawn with 3/4" (19mm) material
- 2/ 0.5 lbs / ft³ (8 g /litre). Stuff from the top to the half-way mark, or just past
- 3/ 3" D, 6" long port (75mm x 152mm)
- 4/ swiss cheese bracing as above.
- 5/ 3/4" (19mm) brace front-to-back couples the midbasses to cabinet back, top, & side-to-side braces.
- 6/ side-to-side are irregularly spaced using golden ratio. Diagonal is even better
- 7/ port can be moved to the front or bottom



Supply piece 1

1: 46 1/2 x 20 1/4	2: 46 1/2 x 20 1/4	3: 46 1/2 x 20 1/4	4: 46 1/2 x 20 1/4	5: 46 1/2 x 9	8: 46 1/2 x 5 3/8
2: 136 x 96					

Supply piece 2

6: 46 1/2 x 9	7: 46 1/2 x 9	8: 46 1/2 x 9	9: 46 1/2 x 9	10: 46 1/2 x 9	11: 46 1/2 x 9	12: 46 1/2 x 9	17: 21 3/4 x 28	5: 21 3/4 x 4
							18: 21 3/4 x 28	6: 21 3/4 x 4
1: 136 x 96							3: 23/4 x 32 1/8	

Supply piece 3

13: 7 1/2 x 20 1/4	14: 7 1/2 x 20 1/4	15: 7 1/2 x 20 1/4	16: 7 1/2 x 20 1/4	4
7: 40 3/8 x 96				

