

FE127e mFonken 1v1.1

© 2009 planet\_10 enterprises limited  
designed & drawn by D Dlugos | 22-oct-2009  
for non-commercial use only

Notes:

0/ drawn with 15mm (~5/8") baltic birch plywood.  
Adjust build dimensions for material thickness  
deviations

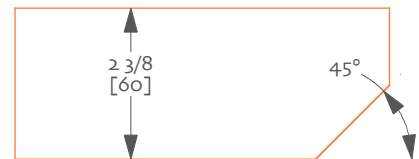
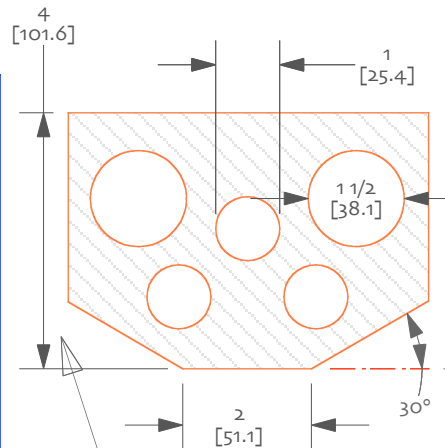
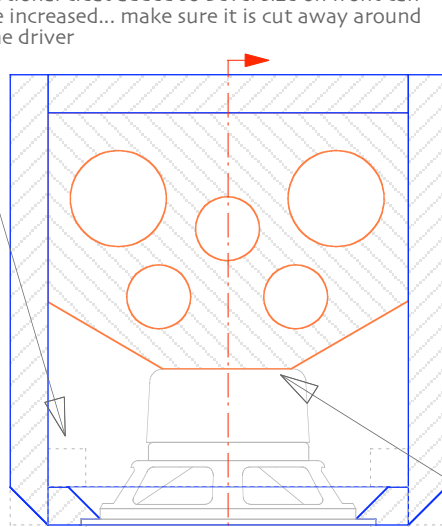
1/ line with wool felt, cotton felt, or fiberglass or  
lightly fill with polyfluff or teased wool

2/ open up back of the driver cutout – preferably 45°  
3/ thicker front baffle or optional cleat can be added  
on front corners if you'd like to increase size of the  
bevel (requires cutting or routing after box  
construction)

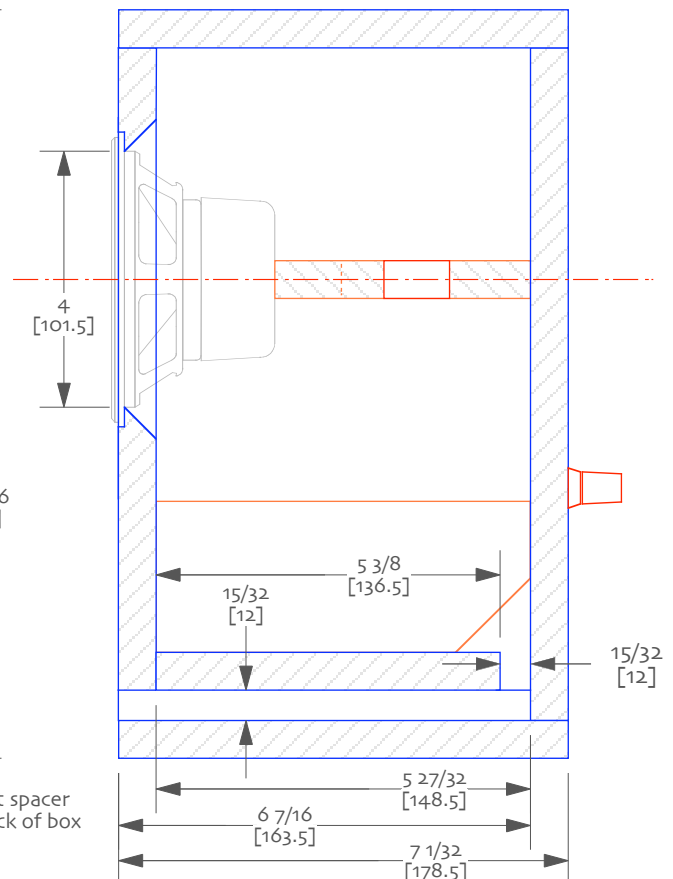
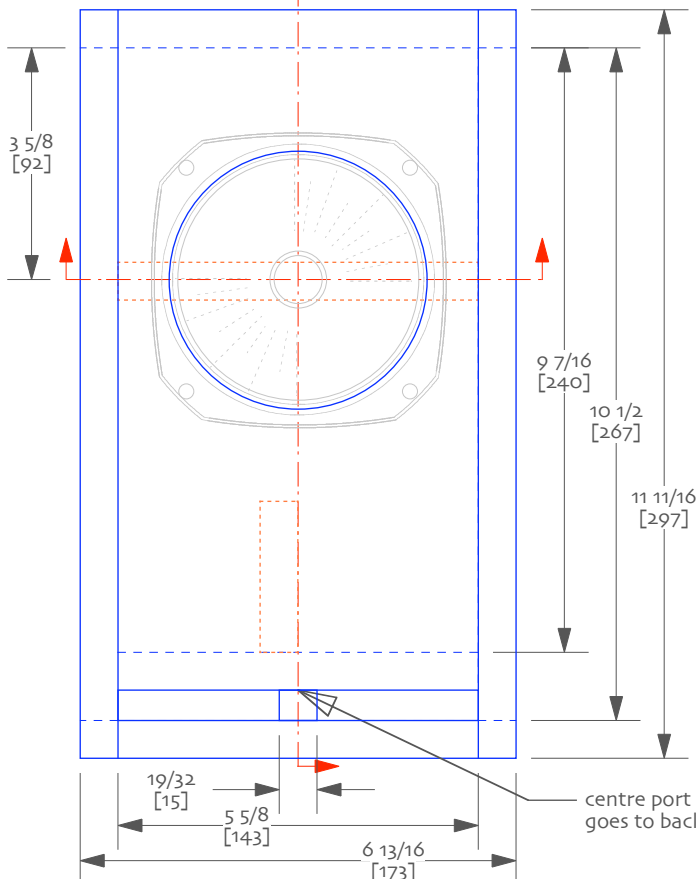
4/ if front baffle is increased in thickness, then the  
length of the port-slot top shelf needs to be  
decreased in length by half the increase in the baffle  
thickness

5/ Rebate of driver bezel is optional

optional cleat added so bevel size on front can  
be increased... make sure it is cut away around  
the driver



The fit of the brace should be determined in the field... the brace should be tight  
against the magnet of the driver, but not so much that it stresses the basket...  
small paper shims can be used if necessary.



centre port spacer  
goes to back of box