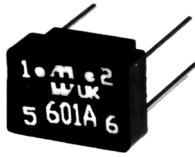


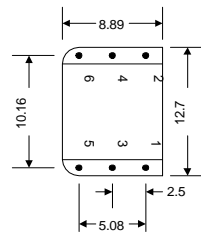
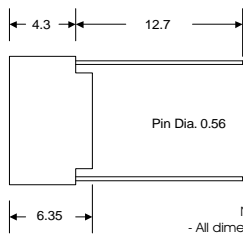
# P.C. Board Mount



## PULSE TRANSFORMERS

- These ferrite cored transformers are fully encapsulated in a high grade black molded case with a UL94V-O rating.
- Used in digital and data processing, line coupling, matching, isolation etc.
- Working voltage rating maximum of 500V D.C.
- ET values up to 50V uS.

Cat. No.	Turns Ratio +/- 2%	Primary Inductance uH (min)	Primary ET Constant V uS	Inter. W Capacity p.f. max.	Leakage Inductance uH max.	D.C. Resistance Ohms max.	Cir. Dia.
600AA	1:1	2060	17.5	35	0.6	1.5	A
600BA	1:1	492	8.5	20	0.3	0.8	A
600CA	1:1	219	5.5	12	0.25	0.5	A
600PA	1:1	323	7	12	0.3	0.6	B
602GA	2:1	2.7	3	3	0.9	0.2	B
601A	1:1	2060	17.5	45	0.6	1.5	B
601B	1:1	492	8.5	20	0.3	0.8	B
601C	1:1	219	5.5	12	0.25	0.5	B
601D	1:1	50	4	10	0.2	0.4	B
601E	1:1	23	2.5	8	0.2	0.3	B
601F	1:1	9.5	6	10	0.2	0.4	B
602A	1:1:1	2060	17.5	35	0.6	1.5	C
602B	1:1:1	492	8.5	20	0.3	0.8	C
602C	1:1:1	219	5.5	12	0.25	0.5	C



NOTES:  
- All dimensions in mm  
- Pins 3 & 4 are omitted on circuit diagram A & B units

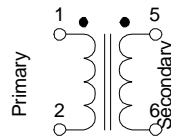


Diagram A

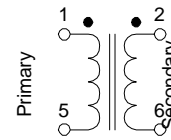


Diagram B

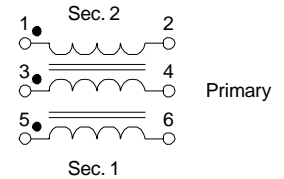
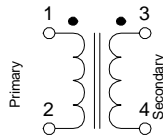
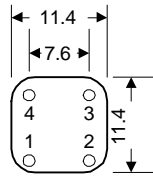
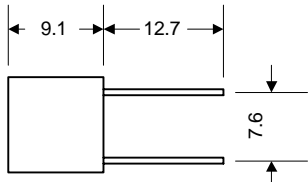
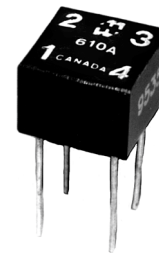


Diagram C

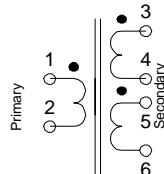
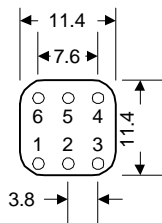
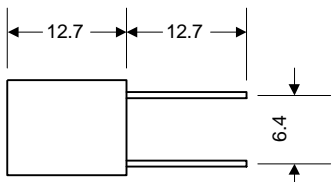
### 610A Dimensions & Schematic



Note: All dimensions in mm



### 610B Dimensions & Schematic



Note: All dimensions in mm

## PULSE TRANSFORMERS

- These ferrite cored transformers are fully encapsulated in a high grade black molded case with a UL94V-O rating.
- Units are intended for wide band and pulse applications including thyristor / triac firing circuits.
- Peak pulse voltage rating maximum of 250V.
- Insulation tested to 1,000V RMS.

Cat. No.	Ratio	Primary		Secondary Resistance		Primary ET Constant V (uS).	Leakage Inductance uH (max.)	Max. Primary or Secondary Current	
		Inductance mH (min)	Resistance Ohms	Sec. 1 (Ohms)	Sec. 2 (Ohms)			@ 0.1% Duty	@ 0.01% Duty
610A	1:1	3.9	3.4	3.9	-	500	60	0.2A	0.6A
610B	1:1:1	2.7	2.1	2.1	2.3	500	50	0.2A	0.6A