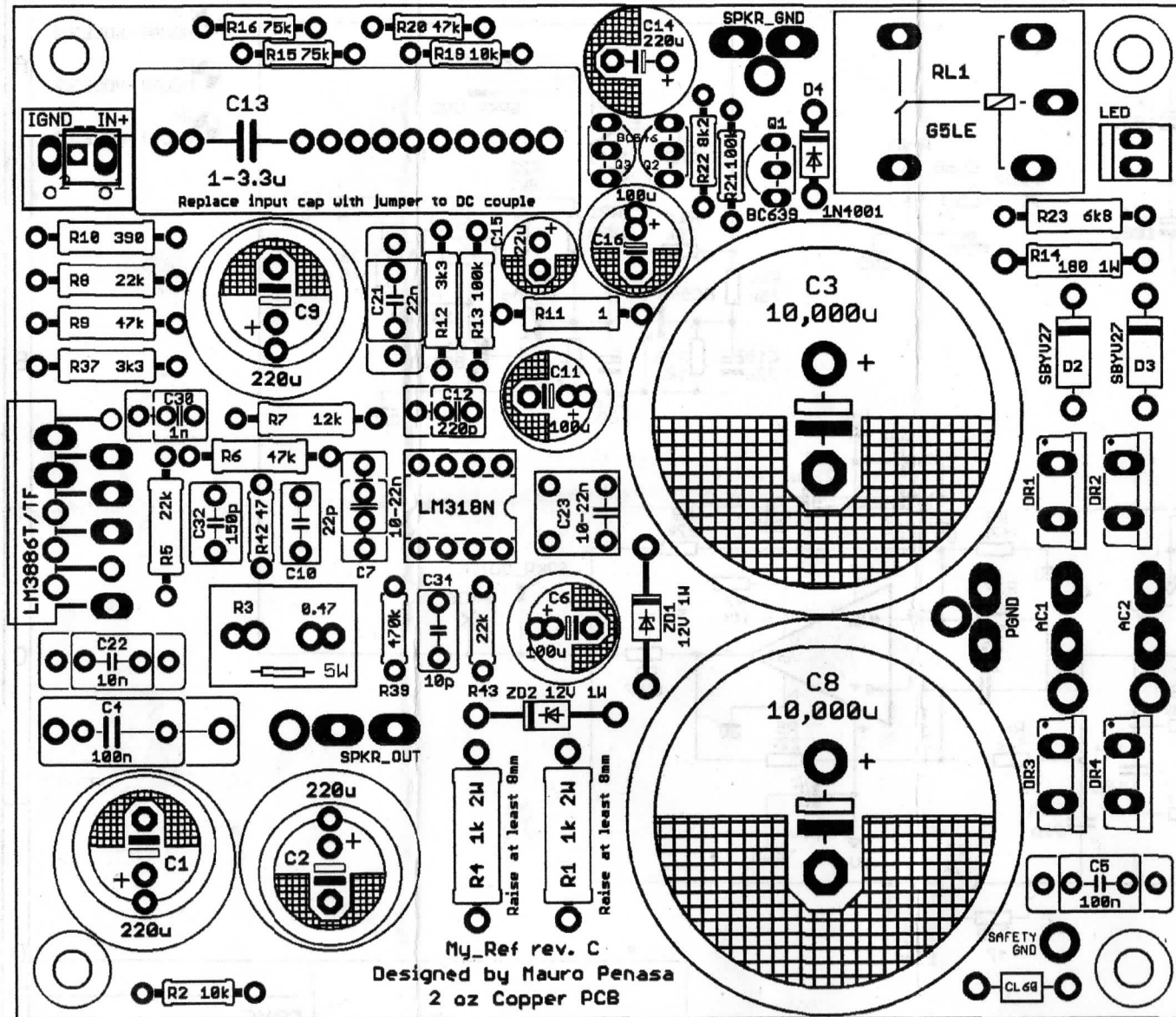


# Mauro Penasa's My\_Reference rev. C



D2, D3	SBYU27/1N4001	1A - 50V Diodes
D4	1N4001	1A - 50V Diodes
Q2, Q3	BC546	NPN Bipolar Transistor
Q1	BC639	NPN Bipolar Transistor
ZD1, ZD2	BZX85C12	12V 1.3W Zener Diode
C4, C5	100nF	
C22	10nF	Optional (Read Note 1)
C7	10nF	
C23	10nF	Optional (Read Note 2)
C21	22nF	
C10	22pF	
C12	220pF	
C13	1uF	
C9	220uF	Radial 50V Elco Audio grade
C14	220uF	Radial 50V Elco
C1, C2	220uF	Radial 50V Elco Low ESR
C3, C8	10000uF	Snap-In 50V Elco Audio Grade
C15	22uF	Radial 25V Elco
C16	100uF	Radial 25V Elco
C6, C11	100uF	Radial 50V Elco Low ESR
C34	10pF	
C30	1nF	
C32	150pF	
IC2	LM318N	
IC1	LM3886T/TF	
D1, D2, D3, D4	MUR820/MUR860	
R5, R8	22K0	1/4W 0.1% (matching)
R6, R9	47K0	1/4W 0.1% (matching)
R42	47	1/4W 1%
R10	390	1/4W 1%
R12, R37	3K3	1/4W 1%
R7	12K0	1/4W 1%
R13	100K	1/4W 1%
R2	10K	1/4W 1%
R39	470K	1/4W 1%
R43	22K	1/4W 1%
R11	1	1/4W 1%
R19	10K	1/4W 1%
R23	6K8	1/2W 5%
R22	8K2	1/4W 1%
R20	47K	1/4W 1%
R15, R16	75K	1/4W 1%
R21	100K	1/4W 1%
R1, R4	1K	3W 5%
R14	180	1W 5%
R3	0.47	5W Ceramic case
RL1	Omron G5LE, etc	24V Relay
CL-60	CL-60	Optional
LED	LED	

Notes: 1. The function of C4 and C22 is similar, just use one of them.

2. The function of C7 and C23 is similar, just use one of them.