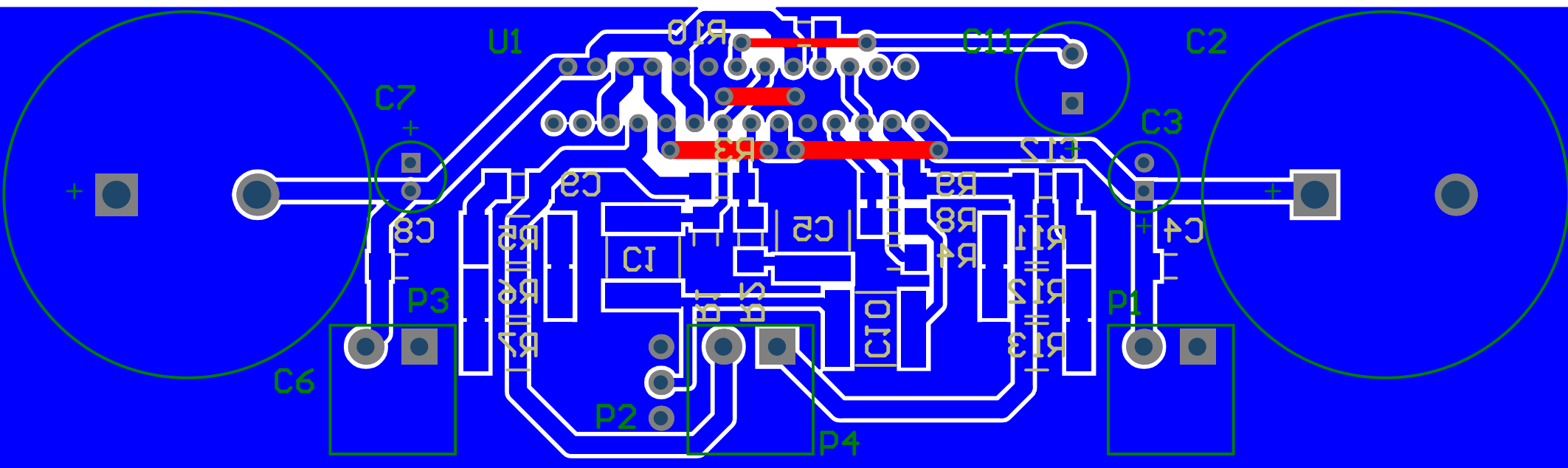


Title			
LM4780			
Size	Number	Revision	
A4	RRLM4780	01	
Date:	2012.02.27.	Sheet 1 of 1	
File:	D:\Users\...\LM4780.SchDoc	Drawn By: Ritvars Ri ikovs	



Bill of Materials

LM4780

Source Data From: LM4780.PrjPcb

Project: LM4780.PrjPcb

Variant: None

Creation Date: 2012.02.27. 22:35:25

Print Date: 40966 40966.94135

Footprint	Comment	LibRef	Designator	Description	Quantity
CAPC2220	1µF @ 50V	SMD_CAP	C1	Semiconductor Chip Capacitor	1
CAPPR10-25x25	1000µF	Cap Pol	C2, C6	Polarized Capacitor (Radial)	2
CAPPR2-5x11	10µF	Cap Pol	C3, C7	Polarized Capacitor (Radial)	2
CAPC1206	0.1µF	SMD_CAP	C4, C8, C9, C12	Semiconductor Chip Capacitor	4
CAPC2220	4.7µF @ 100V	SMD_CAP	C5, C10	Semiconductor Chip Capacitor	2
CAPPR3.5-8x11.5	100µF	Cap Pol	C11	Polarized Capacitor (Radial)	1
MC1.5	Header 1 x 2 Pin	Header 1 x 2 Pin	P1, P3, P4	Header 1 x 2 Pin	3
100milX3	Header 1 x 3 Pin	Header 1 x 3 Pin	P2	Header 1 x 3 Pin	1
RESC1206	3.32K	SMD_RES	R1, R4	Semiconductor Chip Resistor	2
RESC1206	4.75K	SMD_RES	R2, R8	Semiconductor Chip Resistor	2
RESC1206	46.4K	SMD_RES	R3	Semiconductor Chip Resistor	1
RESC2512	1 Ohm 1W	SMD_RES	R5, R6, R7, R11, R12, R13	Semiconductor Chip Resistor	6
RESC1206	51.1K	SMD_RES	R9	Semiconductor Chip Resistor	1
RESC1206	10K	SMD_RES	R10	Semiconductor Chip Resistor	1
LM4780	LM4780	LM4780	U1		1
					30

Approved

Notes

--	--	--