

Radiale Elkos

Standardausführung, ungepolt, isoliert, schaltfest

Radial Lead Type

Standard, Non Polarized, Insulated, Pulse-Proof

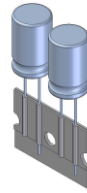
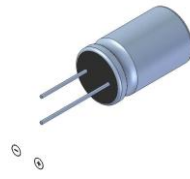
Rastermaß (e/F)
für Durchmesser (Ø/D)

Lead Space (e/F)
for Diameter (Ø/D)

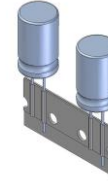
D: 5,5-6,8 mm e=2,5 mm
F=2,5/5,0 mm

D: 8,7-12,5 mm e/F=5,0 mm

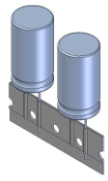
D: 16,5 mm e/F=7,5 mm



D = 5,5 mm
- 10,0 mm



D = 12,5 mm



D = 16,5 mm

| Baureihen | EKMU | | | | | | | | EKT | | | EKSU | | | | | | | |
|---|---|----|----|----|----|----|----|-----|---|-------------|----------|--|----|----|----|----|----|----|-----|
| Anwendung, Besonderheiten Applications, Features | allgemeine Anwendung, bipolar general purpose, non polarized | | | | | | | | Anwendung für Tonfrequenz for audio-frequency | | | allgemeine Anwendung, bipolar general purpose, non polarized | | | | | | | |
| Temperaturbereich Temperature Range | - 40 ... +105°C | | | | | | | | - 40 ... + 85°C (+ 105°C) | | | - 40 ... + 85°C (+ 105°C) für D≤6,8 mm - 40 ... +105°C für D≥8,7 mm | | | | | | | |
| Brauchbarkeitsdauer Useful Life | min 1000 h / 105°C 100 000 h / 40°C für D≤12,5 mm | | | | | | | | min 1 000 h / 105°C 100 000 h / 40°C für D≤12,5 mm | | | min 1 000 h / 105°C 95 000 h / 40°C für D≤6,8 mm | | | | | | | |
| Spezifikation Specification | DIN EN 60384-1, DIN EN 60384-4 ohne Gütebestätigung / without quality assesment | | | | | | | | | | | | | | | | | | |
| Kapazitätstoleranz Capacitance Tolerance | - 10 ... + 50 % | | | | | | | | ± 15 % | | | ± 20 % | | | | | | | |
| Kapazität / Capacitance | abweichende Kapazitätstoleranzen sind auf Anfrage lieferbar / other capacitance tolerances are available on request | | | | | | | | | | | | | | | | | | |
| | Nennspannung / Rated Voltage | | | | | | | | Nennspannung / Rated Voltage | | | Nennspannung / Rated Voltage | | | | | | | |
| C (µF) | 6,3 | 10 | 16 | 25 | 40 | 50 | 63 | 100 | 40 V DC | 63 V DC | 100 V DC | 6,3 | 10 | 16 | 25 | 35 | 50 | 63 | 100 |
| 0,47 | | | | | | | | | 15 V AC | 23 V AC | 35 V AC | | | | | | | | |
| 1,0 | | | | | | | | | | | | | | | | | AR | AR | AR |
| 2,2 | | | | | CC | CC | CC | CC | DC | DC | DD | | | | | | AR | AR | BB |
| 3,3 | | | | | CC | CC | CC | CC | DC | DD | DD | | | | | | AR | AR | BB |
| 4,7 | | | | | CC | CC | CC | CC | DC | DE | FE | | | | | | AR | BB | BB |
| 6,8 | | | | | CC | CC | CC | CC | DD | FE | FE | | | | | | AR | BB | BB |
| 10 | | | | CC | CC | CC | CC | CC | DE | FE | FG | | | | AR | AR | BB | BB | CC |
| 15 | | | | CC | CC | CC | CC | DC | FE | FG | JH | | | | AR | AR | BB | CC | DC |
| 22 | | | CC | CC | CC | CC | DC | DE | FE | JH | JJ | | | AR | BB | BB | CC | CC | DD |
| 33 | | | CC | DC | DC | DC | DD | FE | FG | JH | JL | | | AR | BB | CC | CC | DC | DE |
| 47 | CC | CC | CC | DC | DD | DD | DE | FE | JH | JL | | | AR | BB | BB | CC | DC | DD | FE |
| 68 | CC | CC | DC | DD | DE | FE | FJ | FG | JH | | | | BB | BB | CC | DC | DD | DE | FG |
| 100 | CC | CC | DC | DD | FE | FG | FJ | JH | JL | | | BB | BB | CC | CC | DD | DE | FE | JH |
| 150 | DC | DC | DD | FE | FG | FJ | JH | JJ | Abmessungen / Size: D x L (mm) | | | BB | BB | CC | DC | DE | FE | FG | JJ |
| 220 | DC | DD | DE | FG | FJ | JH | JJ | | 1. Stelle=D | 2. Stelle=L | | CC | CC | DC | DD | FE | FG | JH | JL |
| 330 | DD | DE | FE | FJ | JH | JJ | | | A | 5,5 | B | 12,5 | CC | DC | DD | DE | FJ | JH | JJ |
| 470 | DE | FE | FG | JH | JL | | | | B | 6,8 | C | 12,7 | DC | DD | DE | FE | FG | JJ | JL |
| 680 | FE | FG | JH | JJ | | | | | C | 8,7 | D | 16,5 | DD | DE | FE | FG | JH | JL | |
| 1 000 | FJ | JF | JJ | JL | | | | | D | 10,0 | E | 21,0 | DE | FE | FG | JH | JJ | | |
| 1 500 | JH | JJ | | | | | | | F | 12,5 | F | 22,0 | FE | FG | JH | JL | | | |
| 2 200 | JJ | JL | | | | | | | J | 16,5 | G | 25,0 | FG | JH | JJ | | | | |
| 3 300 | | | | | | | | | | | H | 26,0 | JH | JJ | | | | | |
| 4 700 | | | | | | | | | | | J | 30,0 | JJ | JL | | | | | |
| 6 800 | | | | | | | | | | | L | 36,5 | JL | | | | | | |
| 10 000 | | | | | | | | | | | R | 12,0 | | | | | | | |