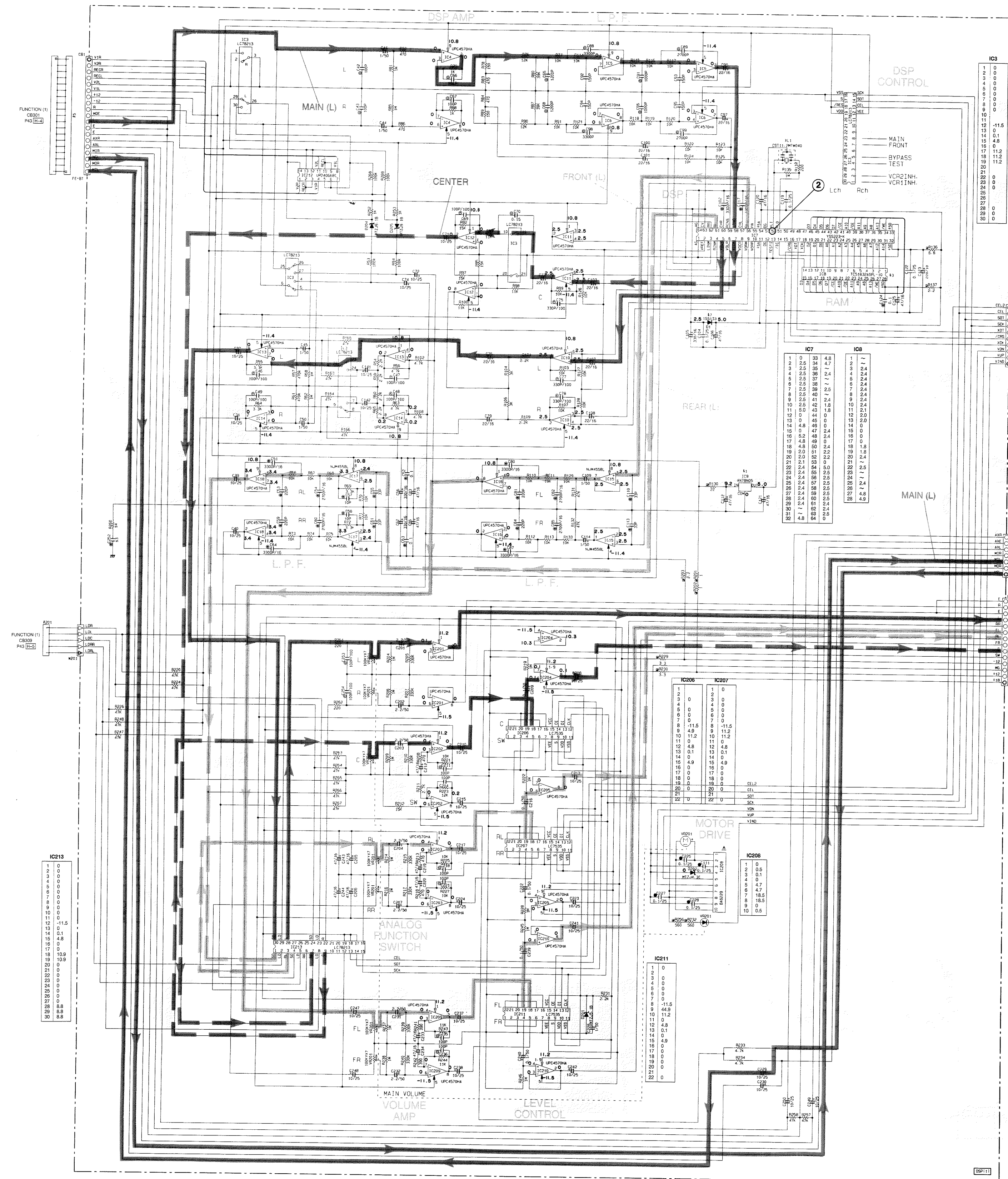


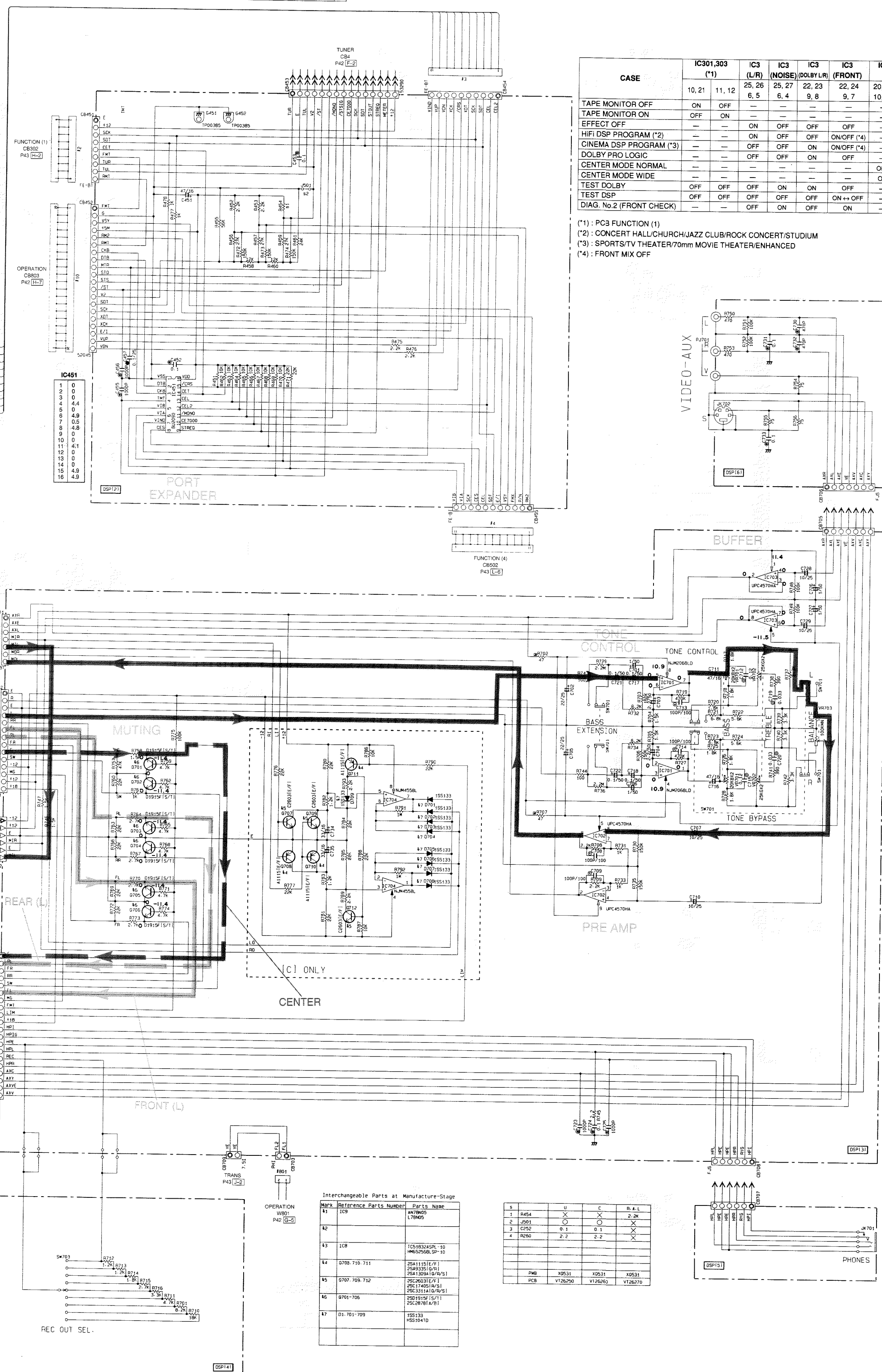
### ■ SCHEMATIC DIAGRAM (DSP)

② : TEST POINT WAVEFORMS (See page 24)



RESISTOR		REMARKS	PARTS NAME
NO MARK			CARBON FILM RESISTOR (P=5)
<input checked="" type="checkbox"/>			CARBON FILM RESISTOR (P=10)
<input checked="" type="checkbox"/>			METAL OXIDE FILM RESISTOR
<input checked="" type="checkbox"/>			METAL FILM RESISTOR
<input checked="" type="checkbox"/>			METAL PLATE RESISTOR
<input checked="" type="checkbox"/>			FIRE PROOF CARBON FILM RESISTOR
<input type="checkbox"/>			CEMENT MOLDED RESISTOR
<input checked="" type="checkbox"/>			SEMI VARIABLE RESISTOR
<input checked="" type="checkbox"/>			CHIP RESISTOR

CAPACITOR	PARTS NAME
NO MARK	ELECTROLYTIC CAPACITOR
⊗	TANTALUM CAPACITOR
NO MARK	CERAMIC CAPACITOR
⊗	CERAMIC TUBULAR CAPACITOR
⊗	POLYESTER FILM CAPACITOR
⊗	POLYSTYRENE FILM CAPACITOR
①	MICA CAPACITOR
⊗	POLYPROPYLENE FILM CAPACITOR
⊗	SEMICONDUCTIVE CERAMIC CAPACITOR



CASE	IC301,303 (*)		IC3 (L/R)	IC3 (NOISE)	IC3 (0.0V/L/R)	IC3 (FRONT)	IC3
	10, 21	11, 12	25, 26 6, 5	25, 27 6, 4	22, 23 9, 8	22, 24 9, 7	20, 21
TAPE MONITOR OFF	ON	OFF	—	—	—	—	—
TAPE MONITOR ON	OFF	ON	—	—	—	—	—
EFFECT OFF	—	—	ON	OFF	OFF	OFF	—
HIFI DSP PROGRAM (*2)	—	—	ON	OFF	OFF	OFF	—
CINEMA DSP PROGRAM (*3)	—	—	OFF	OFF	OFF	ON/OFF (*4)	—
DOLBY PRO LOGIC	—	—	OFF	OFF	OFF	ON/OFF (*4)	—
CENTER MODE NORMAL	—	—	—	—	—	—	ON
CENTER MODE WIDE	—	—	—	—	—	—	OFF
TEST 00, 01	OFF	OFF	OFF	OFF	OFF	OFF	—
TEST DSP	OFF	OFF	OFF	OFF	OFF	ON or OFF	—
DIAG. No.2 (FRONT CHECK)	—	—	OFF	ON	ON	ON	—

(\*1) : PC3 FUNCTION (1)  
(\*2) : CONCERT HALL/CHURCH/JAZZ CLUB/ROCK CONCERT/STADIUM  
(\*3) : SPORTS/TV THEATER/70mm MOVIE THEATER/ENHANCED  
(\*4) : FRONT MIX OFF

- \* All voltage are measured with a 10M $\Omega$ /DC electric volt meter.
- \* Components having special characteristics are marked  and must be replaced with parts having specifications equal to those originally installed.
- \* Schematic diagram is subject to change without notice.



