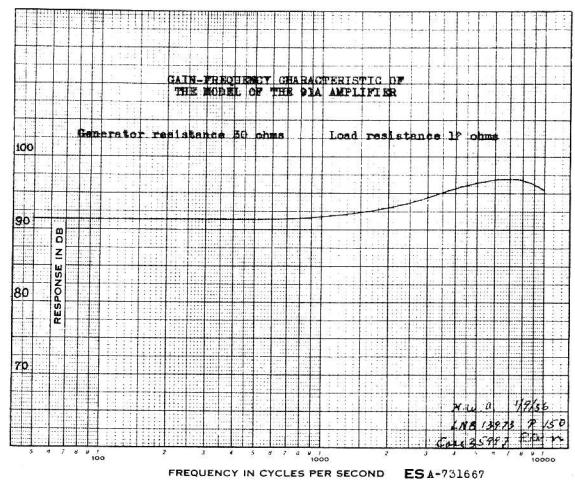
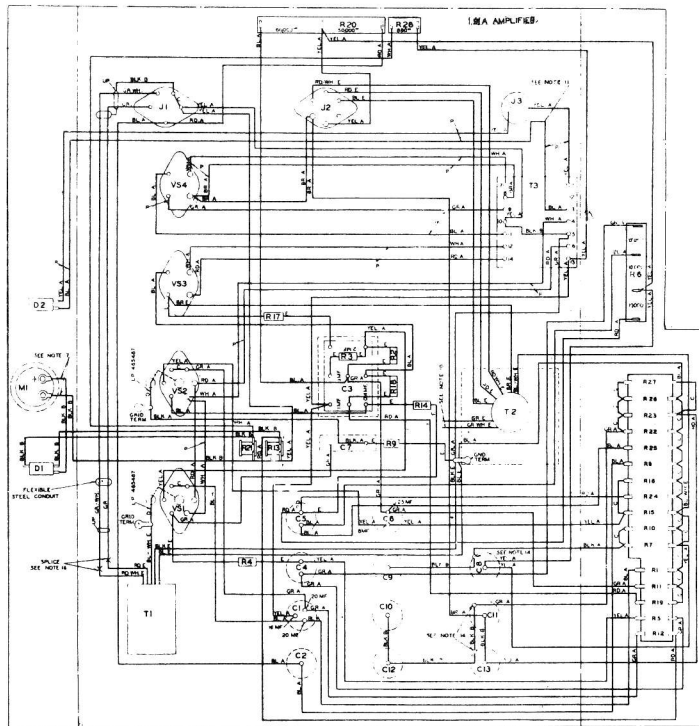
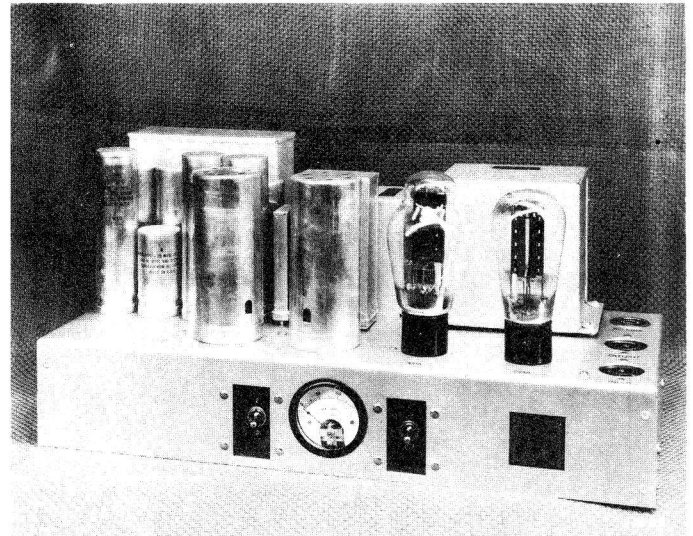


EQUIPMENT CHARACTERISTICS

WEIGHT - - - - - 30.5 Lbs.  
MOUNTING - - - - - Dish Type Aluminum Chassis  
Designed to Mount in KS-7641 Cabinet or on Shelf.  
SIZE - - - - - 19" x 8" x 8-1/2"



REFERENCE  
HARMONIC ANALYSIS VS POWER OUTPUT---ESA-730729  
ESA-730730  
ESA-730731  
ESA-730732

ELECTRICAL CHARACTERISTICS

GAIN - - - - - 92 db  $\pm$  2 db  
OPERATES FROM - - - - - 30 Ohms  
INTERNAL INPUT IMPEDANCE - - - - - Open  
OPERATES INTO - - - - - 12 Ohm Load 2/3 of Power  
14 Ohm Monitor Circuit 1/3 of Power  
INTERNAL OUTPUT IMPEDANCE - - - - - 2 Ohms for 12 ohm Winding  
OUTPUT POWER - - - - - 8 Watts 5% Harmonic Distortion  
OUTPUT NOISE - - - - - -20 db Unweighted  
POWER SUPPLY - - - - - 105-125 Volts AC 60 Cycles\*  
GAIN CONTROL - - - - - None.

NOTE: 91A is for 60 cycles only.  
91B is for 50-60 cycles.

