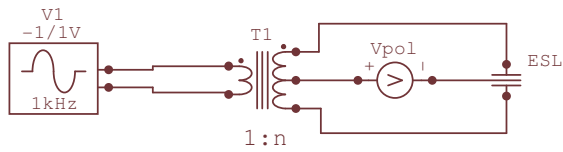
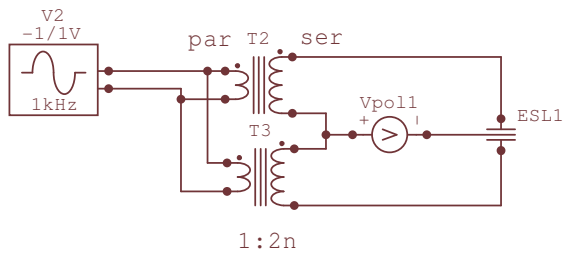


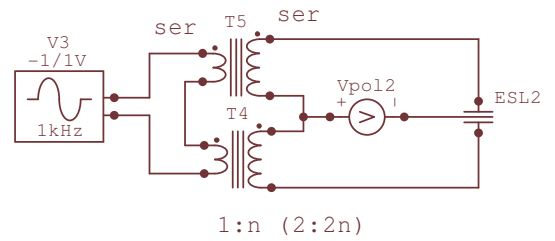
Standard connection of  
center-tapped transformer



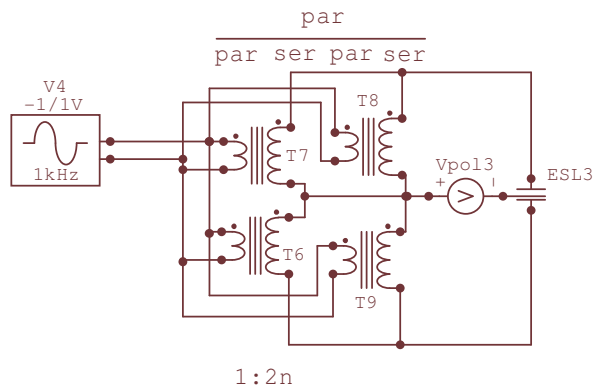
connection of two single  
transformers giving double  
voltage ratio



connection of two single  
transformers giving single  
voltage ratio



connection of four single  
transformers giving double  
voltage ratio and halved  
stray-inductance



connection of four single  
transformers giving single  
voltage ratio and halved  
stray-inductance

