

Musical Fidelity A1 - Power Amp Section

Quiescent Current
700mA to 800mA

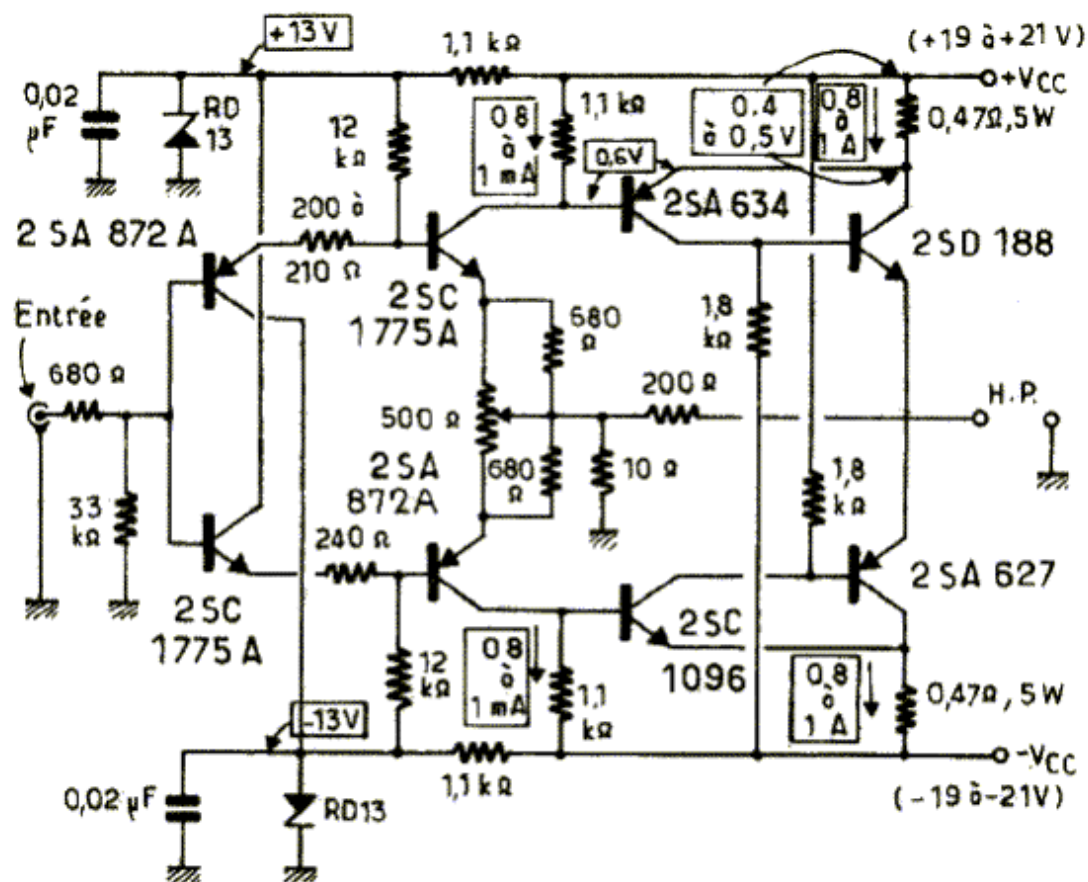
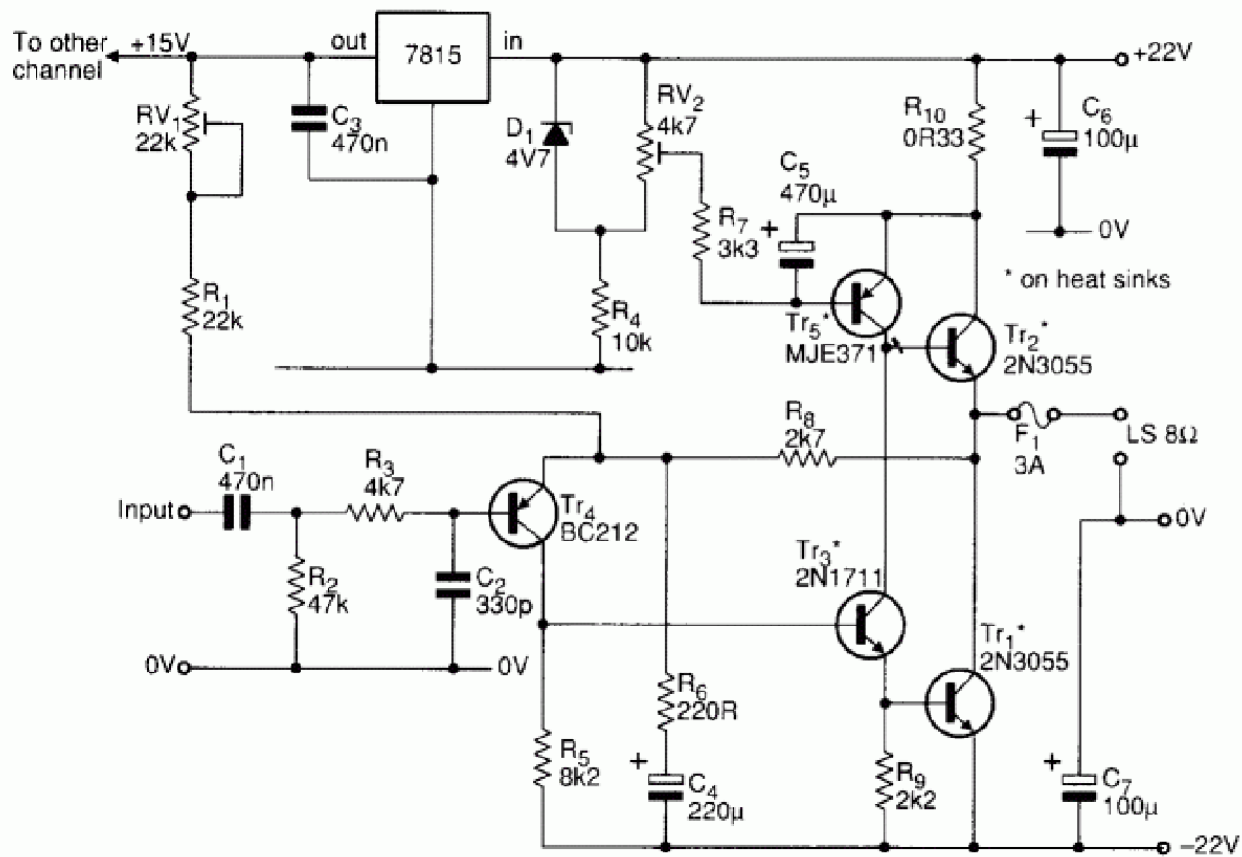


Fig. 1 : Diagram of the 20W amplifier, final version, including some slight modifications compared to the description published in Issues 10 and 11.



RESISTOR .25 WATT UNLESS NOTED
CAPACITORS ARE IN MICROFARADS @ 50V

