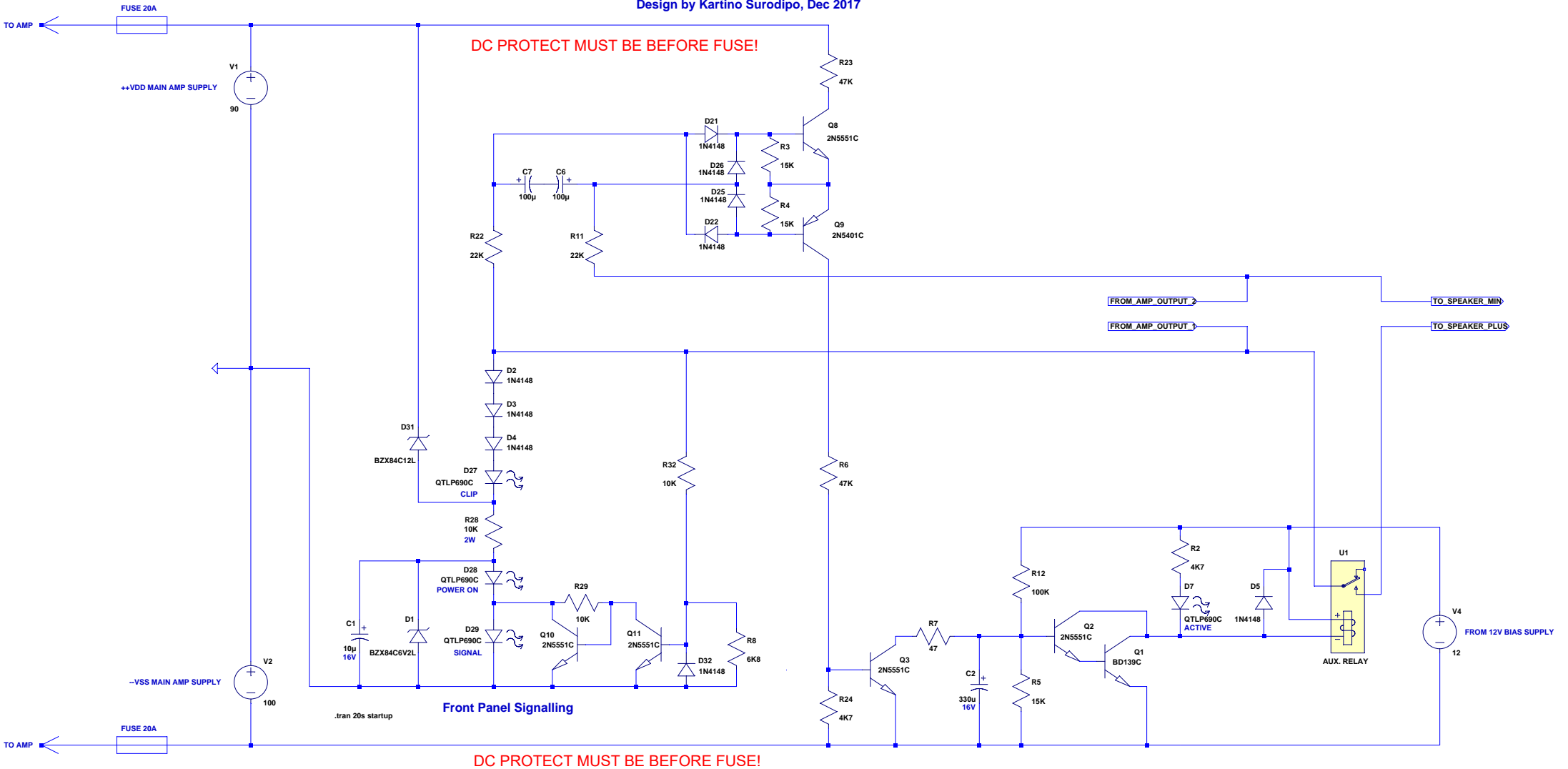
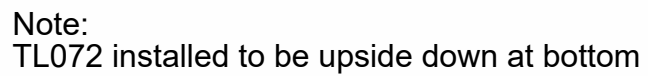


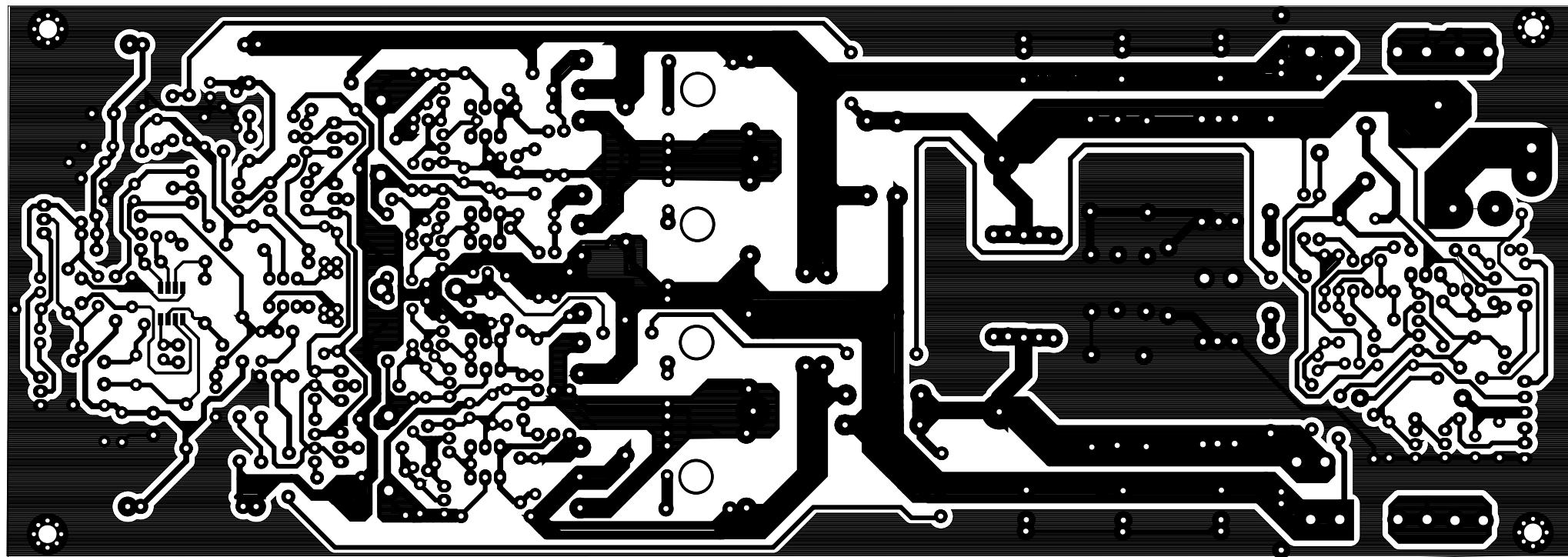
CLASS D Signalling & DC Protection for FullBridge V.3

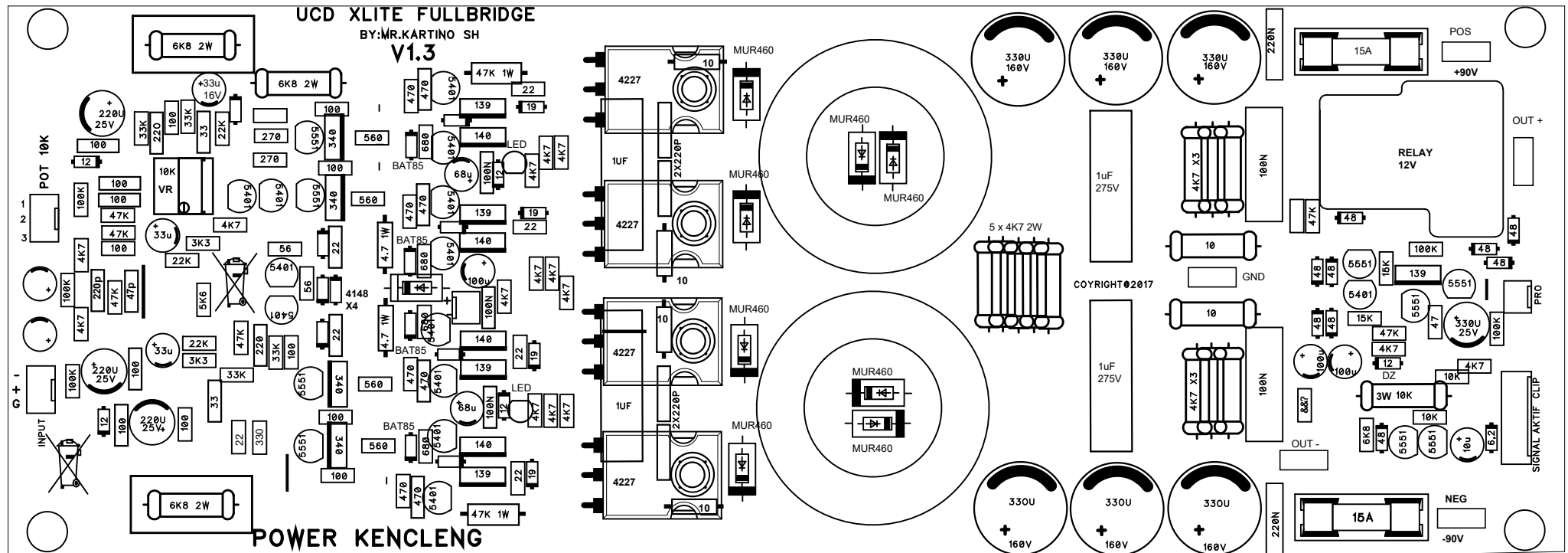
Design by Kartino Surodipo, Dec 2017





Note:
TL072 installed to be upside down at bottom





NOTE: VR 10K MUST BE IN MID POS BEFORE SOLDERING
BEFORE CONNECT TO SPEAKER, SET DCO UNTIL
STABLE WITH SMALL FAN FOR COOLING