

# NOTES:

1. ALL RESISTORS ARE 1/4 WATT UNLESS OTHERWISE STATED .
2. 2N4250A IS EQUIVALENT TO PN4250A AND MPS4250A .
3. \*C3, \*C4 & \*C8 ARE DESIGNATED FOR P/N 554-1099 ONLY.  
AFTER TESTING PROCEDURES 554-1098 IS CONVERTED TO 554-1099  
BY ADDING \*C3, \*C4 & \*C8.
4. P/N 554-1099 IS USED IN E-LINE PHONO STAGE APPLICATIONS ONLY.

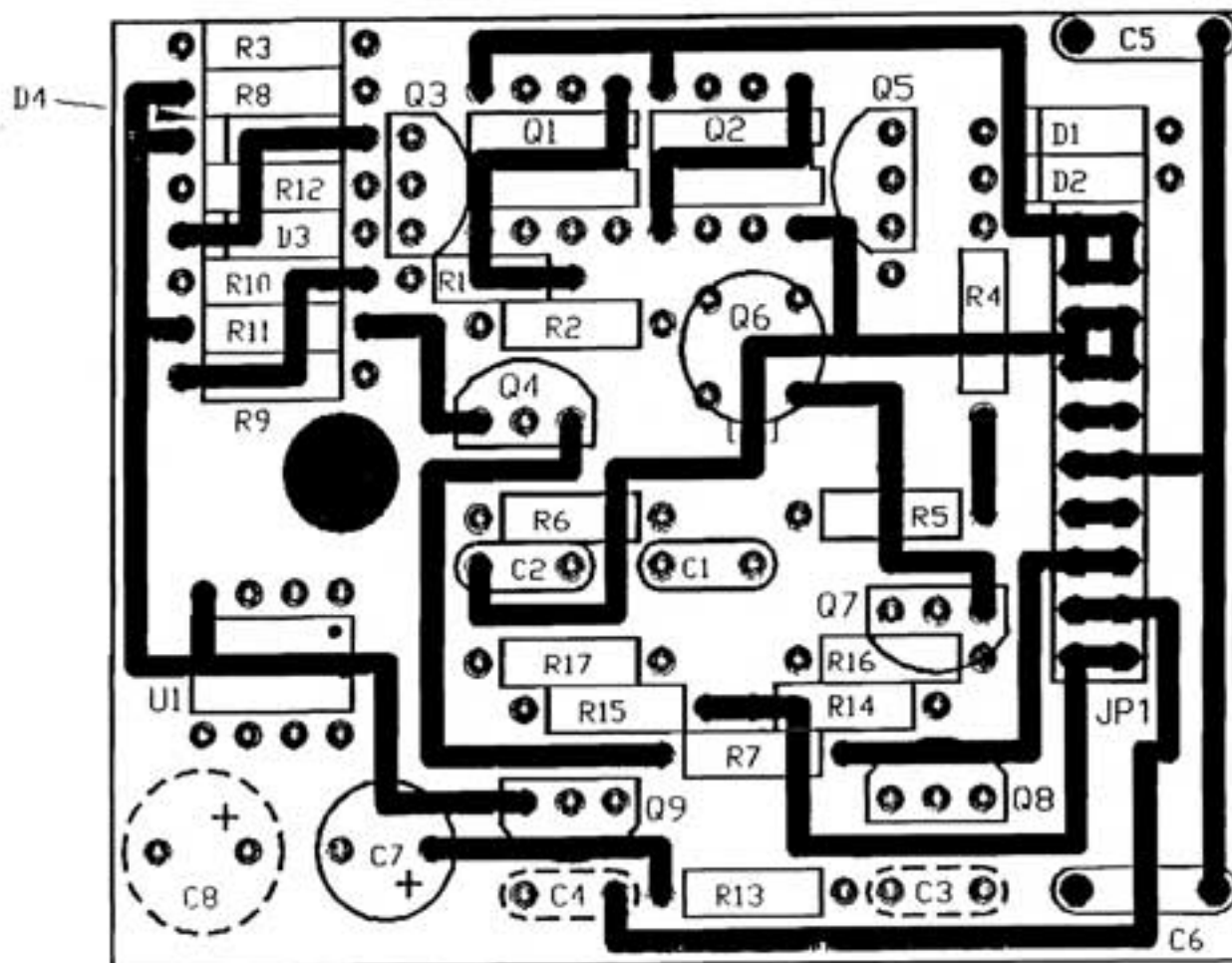
## THRESHOLD CONFIDENTIAL

This is considered a trade secret and is not to be divulged or used by parties who have not received written authorization from Threshold

THRESHOLD CORPORATION

APPROVED BY: *[Signature]*  
DRAWN BY CUSICK *[Signature]*  
ORCAD FILE: SGAIN-NC.SCH  
REV: NC 12-29-89

Title		
GAIN PCA, E-LINE, SCHEMATIC		
Size	Document Number	REV
A	55541098-NC (REF: 554-1098, -1099)	NC
Date:	January 11, 1990	Sheet 1 of 1



NOTES:

1. THIS DRAWING ILLUSTRATES P/N 554-1098 & P/N 554-1099.
2. C3, C4 & C8 ARE ON THE 554-1099 PCA ONLY.
3. ALL RESISTORS ARE 1/4 WATT.

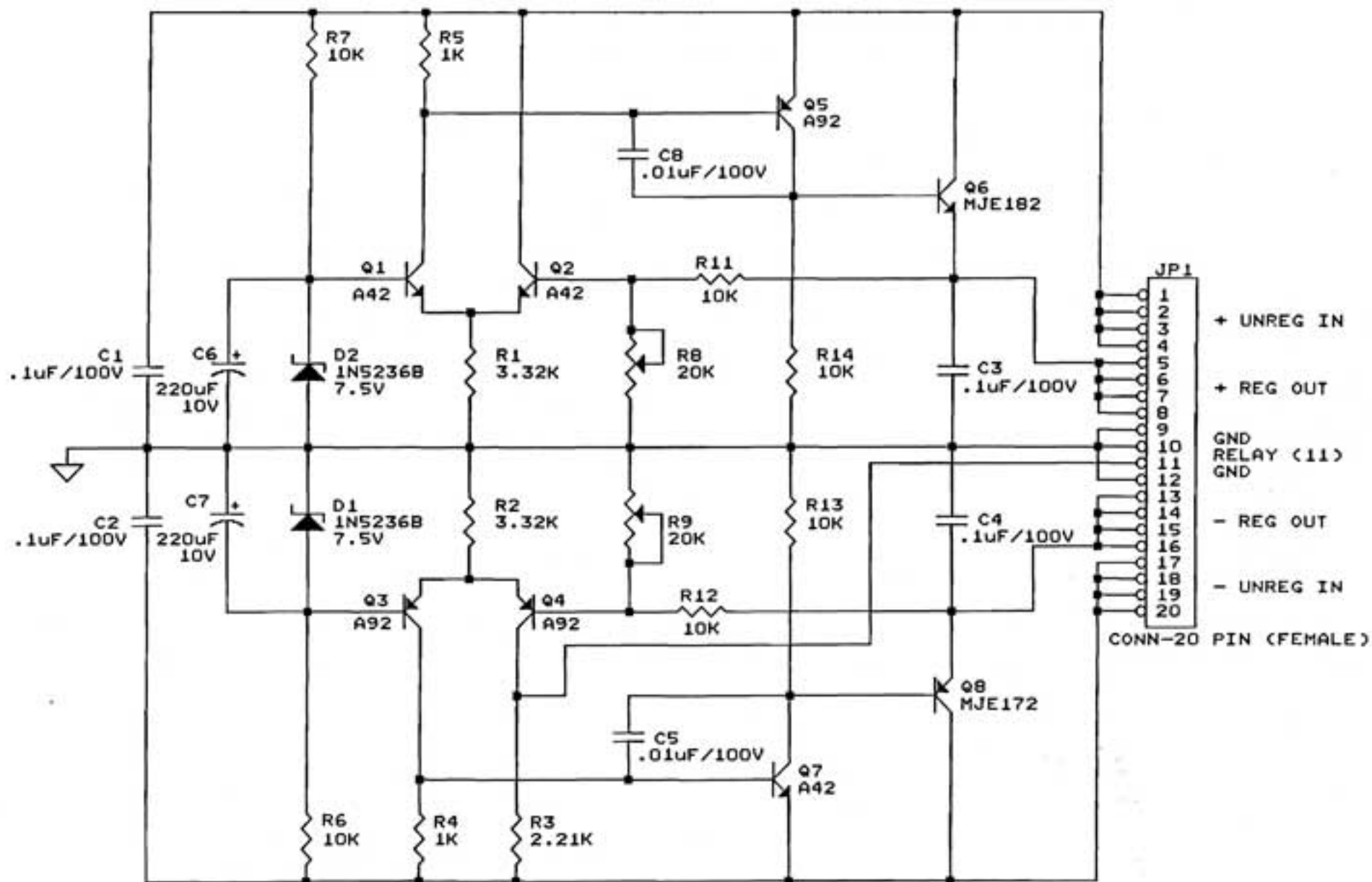
**THRESHOLD CONFIDENTIAL**

This is considered a trade secret and is not to be divulged or used by parties who have not received written authorization from Threshold

ASSOCIATED  
DOCUMENTATION:  
S5541098  
R5541098  
A5541098

*Jm*

NC	RELEASE # R890915	12-29-89	<i>hnc</i>
THRESHOLD CORP			
DATE: 12-29-1989	APP BY <i>hnc</i>	DRAWN BY CUSICK	
SCALE N/A	PAGE 1 OF 1	REV NC 12-29-89	
LAYOUT, GAIN PCA, E-LINE PRE-AMPS			
PART NO 554-1098 & -1099	CAD FILE RGAIN-NC	DRAWING NO R5541098-NC	



# THRESHOLD CONFIDENTIAL

This is considered a trade secret and is not to be divulged or used by parties who have not received written authorization from Threshold

## ASSOCIATED DOCUMENTATION:

55541096  
R5541096  
A5541096  
F0541096

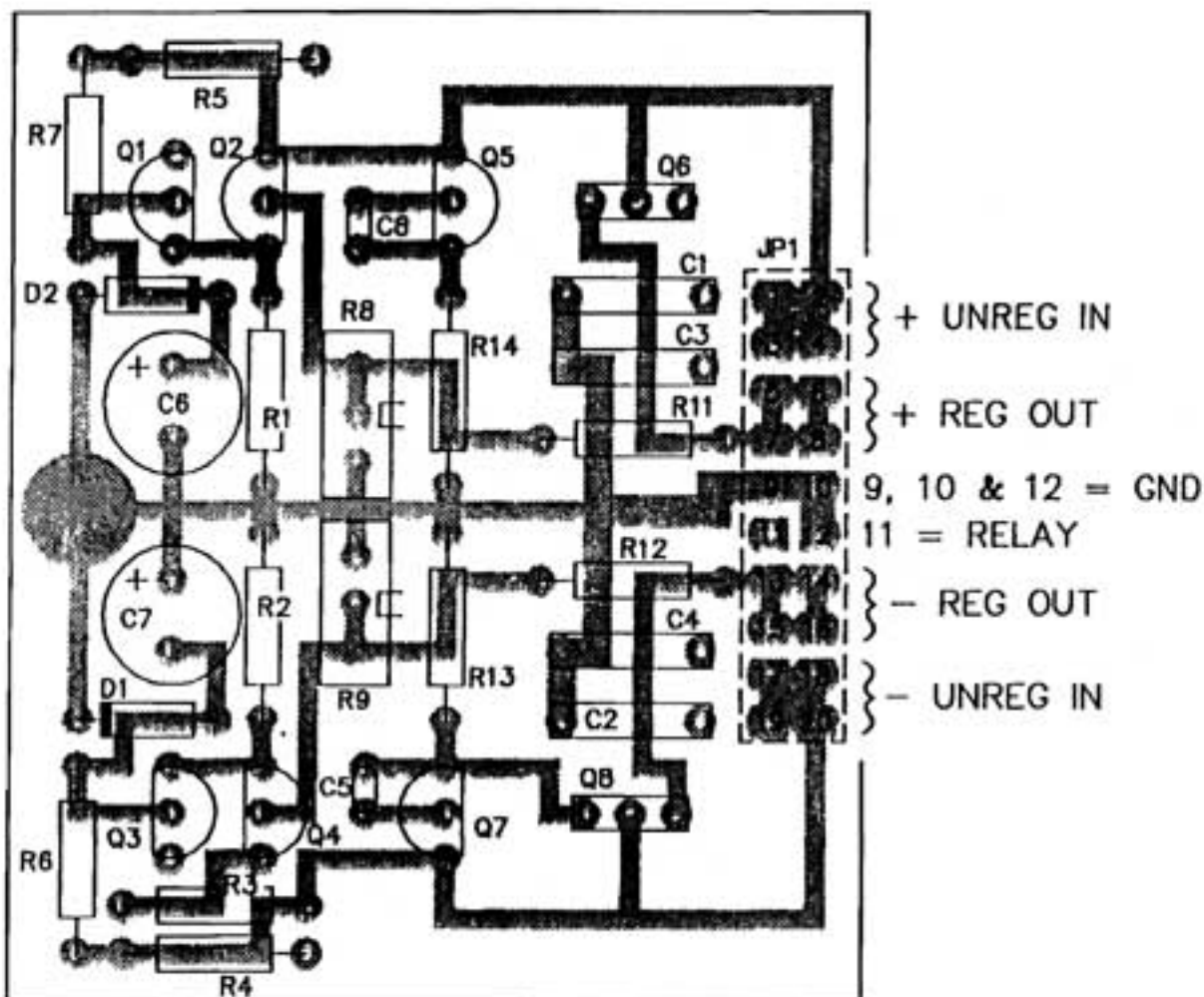
THRESHOLD CORP.

APPROVED BY: *Ker* 11-24-89

DRAWN BY CUSICK *JHC*

ORCAD FILE: SPSPAENC.SCH

Title		
SCHEMATIC, POWER SUPPLY, PRE-AMP, E-LINE		
Size	Document Number	REV
A	55541096-NC (REF: P/N 5541096)	NC
Date:	November 29, 1989	Sheet 1 of 1



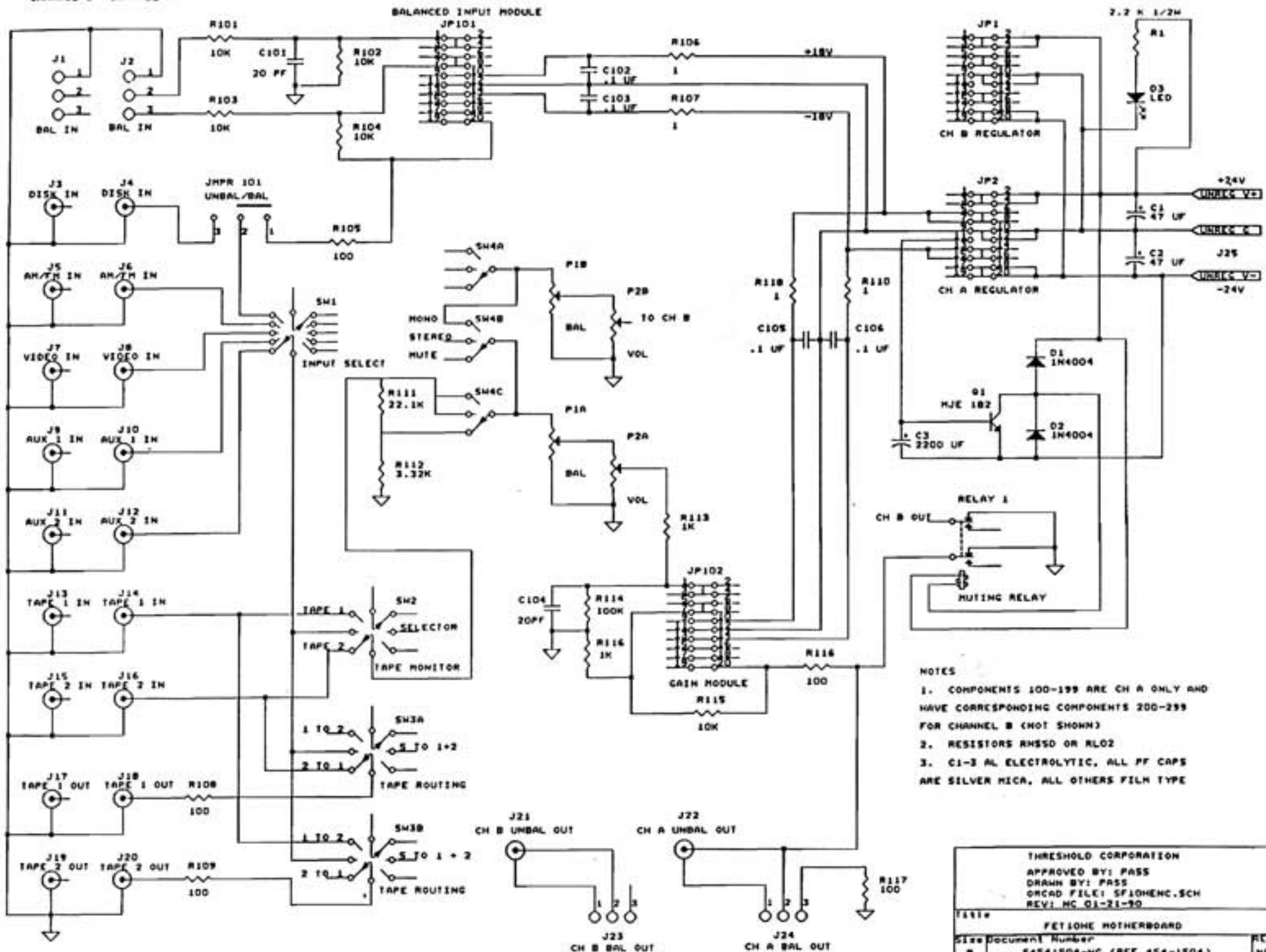
# **THRESHOLD CONFIDENTIAL**

This is considered a trade secret and is not to be divulged or used by parties who have not received written authorization from Threshold

## **ASSOCIATED DOCUMENTATION:**

S5541098  
R5541098  
A5541096  
F0541096

NC	RELEASE # R890915	10-25-89
<b>THRESHOLD CORP</b>		
DATE: 10-25-1989	APP BY <i>DK KER</i>	DRAWN BY CUSICK
SCALE 2:1	PAGE 1 OF 1	REV NC 10-25-89
<b>LAYOUT, POWER SUPPLY, UNIV, PRE-AMP</b>		
PART NO 554-1098	CAD FILE RPSPAENC	DRAWING NO R5541096-NC

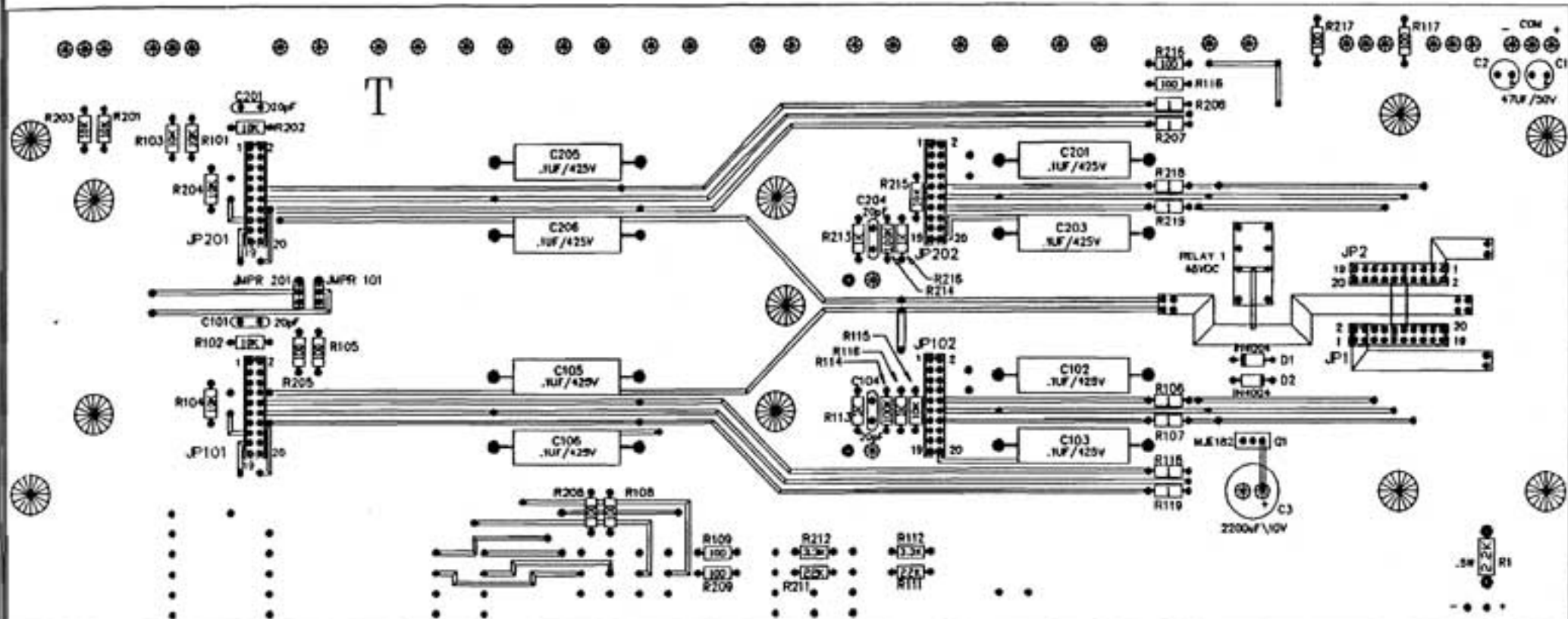


## NOTES

1. COMPONENTS 100-199 ARE CH A ONLY AND HAVE CORRESPONDING COMPONENTS 200-299 FOR CHANNEL B (NOT SHOWN)
2. RESISTORS RH550 OR RLO2
3. C1-3 AL ELECTROLYTIC, ALL PF CAPS ARE SILVER MICA, ALL OTHERS FILM TYPE

THRESHOLD CORPORATION  
 APPROVED BY: PASS  
 DRAWN BY: PASS  
 ORCAD FILE: SP10HENC.SCH  
 REV: MC 01-21-90

File	FETIONE MOTHERBOARD	REV
Size	Document Number	MC
B	54541504-MC (REF 454-1504)	
Date	February 4, 1990	Sheet 1 of 1



**THRESHOLD CONFIDENTIAL**  
 This is considered a trade secret and is not to be divulged or used by parties who have not received written authorization from Threshold

NC	RELEASE	02-02-90	gnc
THRESHOLD CORP			
DATE: 02-02-1990	APP BY gnc	DRAWN BY CUSICK	
SCALE N/A	PAGE 1 OF 1	REV NC 02-02-90	
LAYOUT, FET 10 HIGH, PRE-E			
PART NO 454-1504	CAD FILE RF10HENC	DRAWING NO R4541504-NC	