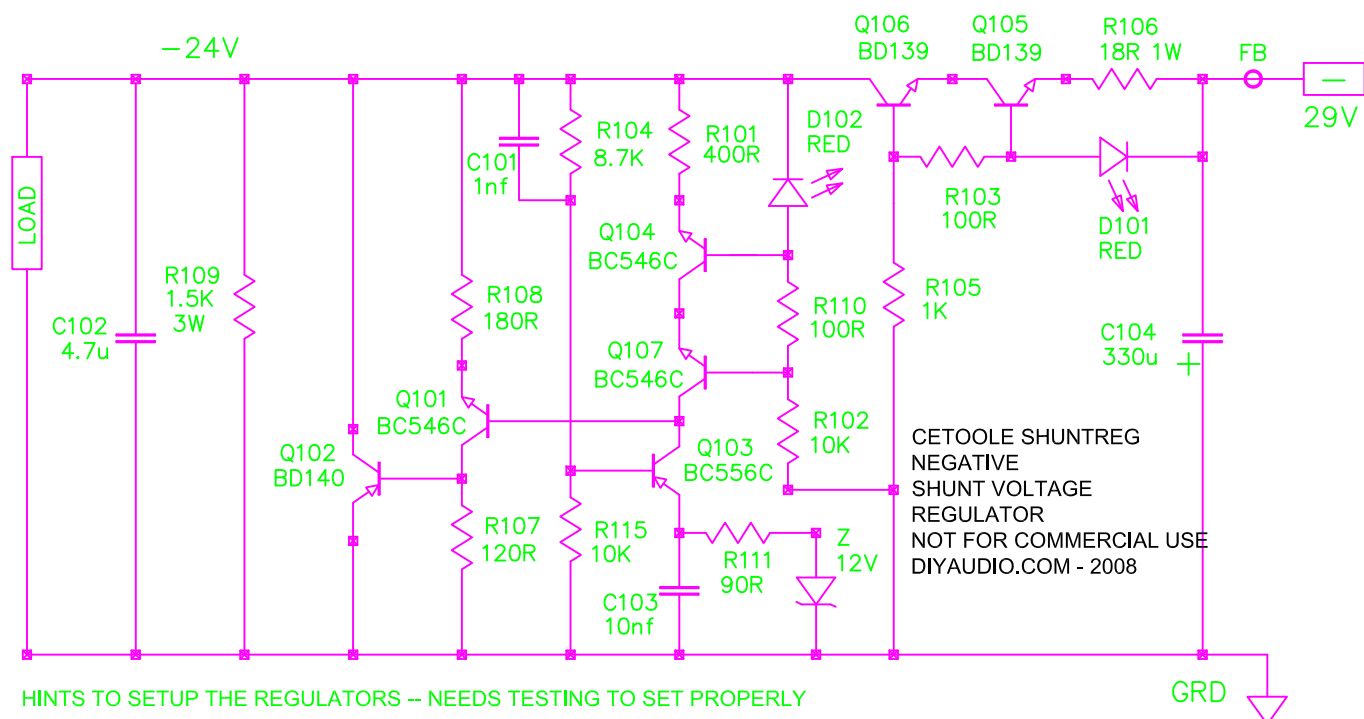
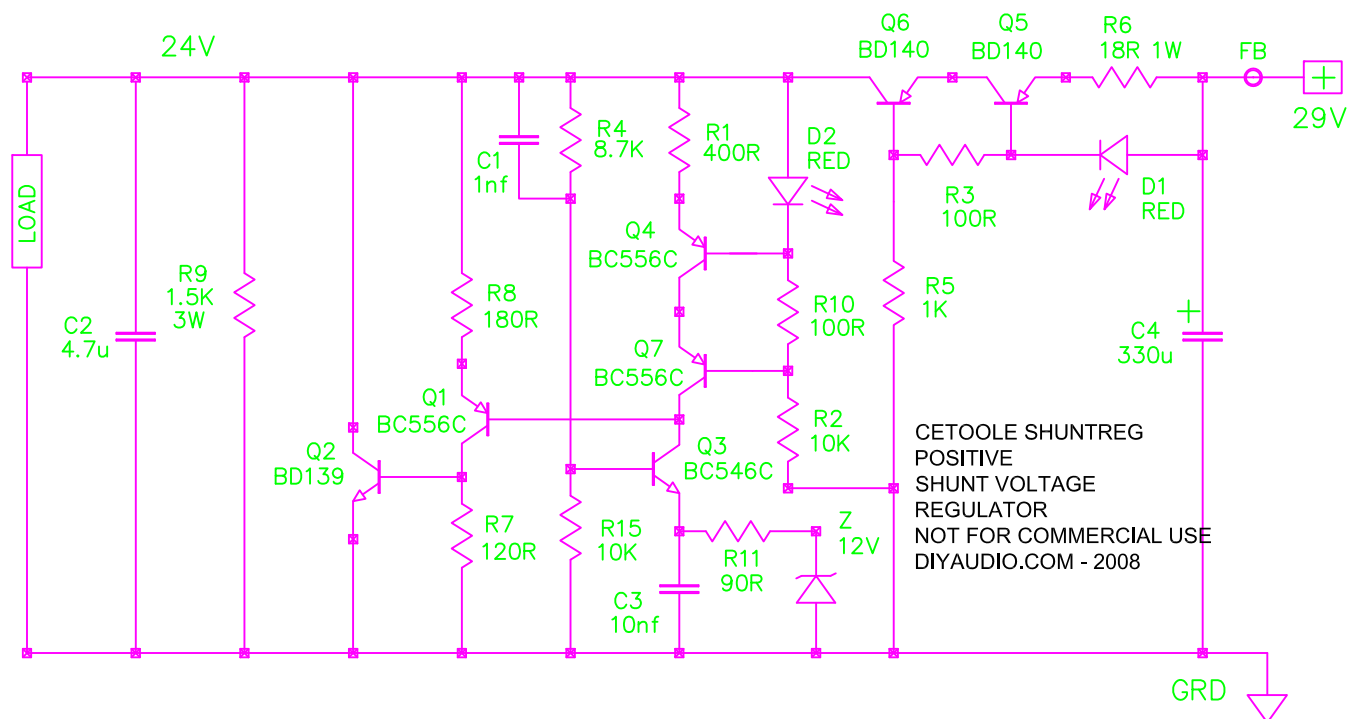


BIPOLAR DISCRETE POSITIVE / NEGATIVE SHUNT REGULATOR
 DESIGN BY COLIN TOOLE
 ART WORK BY APASSGEAR / STEENOE - V2.7
 NOT FOR COMMERCIAL USE - DIYAUDIO.COM 2008



HINTS TO SETUP THE REGULATORS -- NEEDS TESTING TO SET PROPERLY

15V OUT USE R4 / 104 WITH 1.5K
 18V OUT USE R4 / 104 WITH 4.0K
 24V OUT USE R4 / 104 WITH 8.7K

TO SET CCS CHANGE R6 / 106 AS FOLLOWS
 10R = 170mA --- 15R = 130mA --- 18R = 114mA
 20R = 105mA --- 25R = 89mA --- 30R = 78mA

SET R9 / 109 TO SINK ABOUT 1/3 THE EXCESS CURRENT