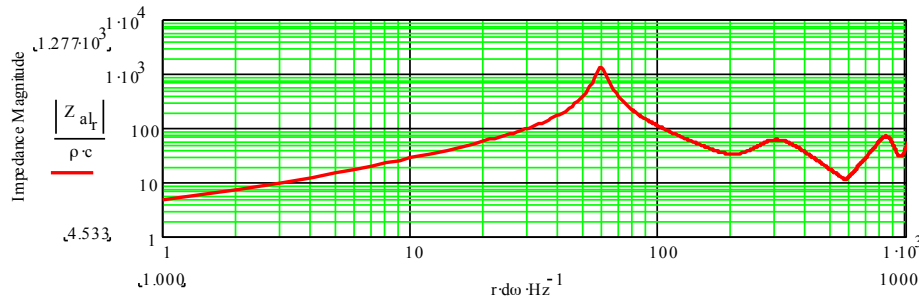


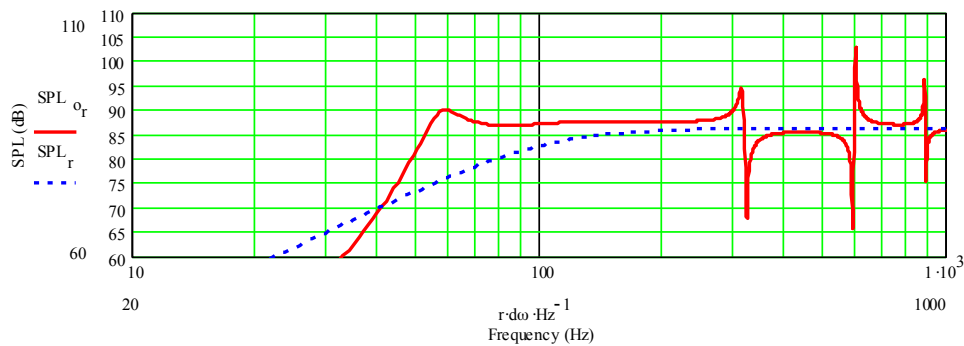
Sim for robskills – TABAQ short version

Tang Band W3-315SC, Fs 100 Hz. Sim by software from Martin J. King.

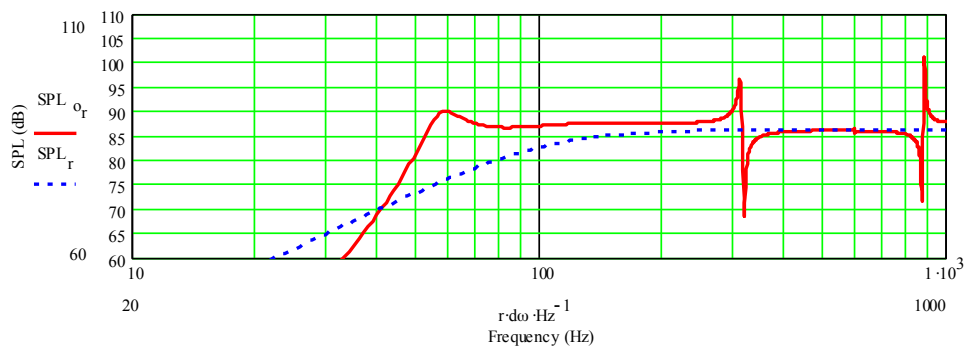
Tuning is about 5 Hz higher than the original TABAQ:



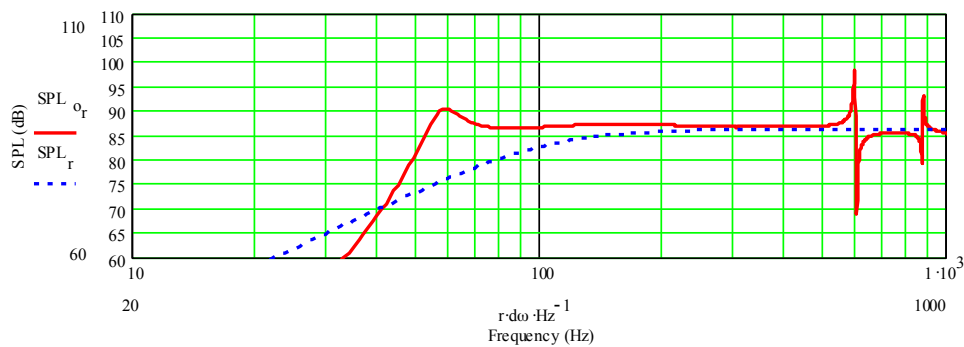
7,2 cm:



14,5 cm:



27,8 cm:

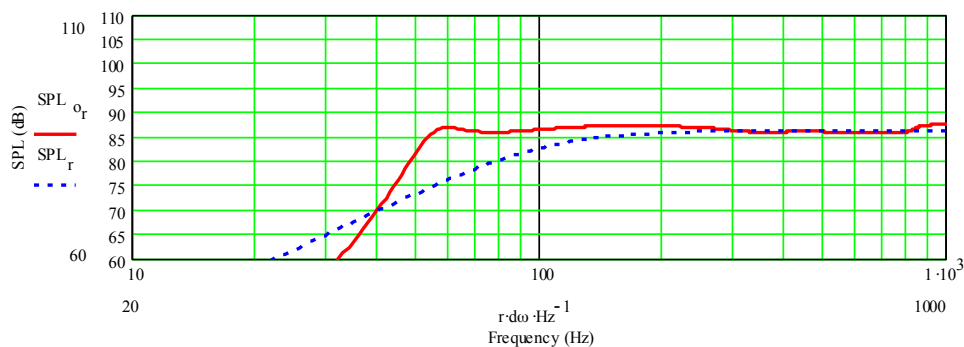


This one will require less stuffing to dampen the peaks in the treble, but there is also a peak at 60 Hz to take care of.

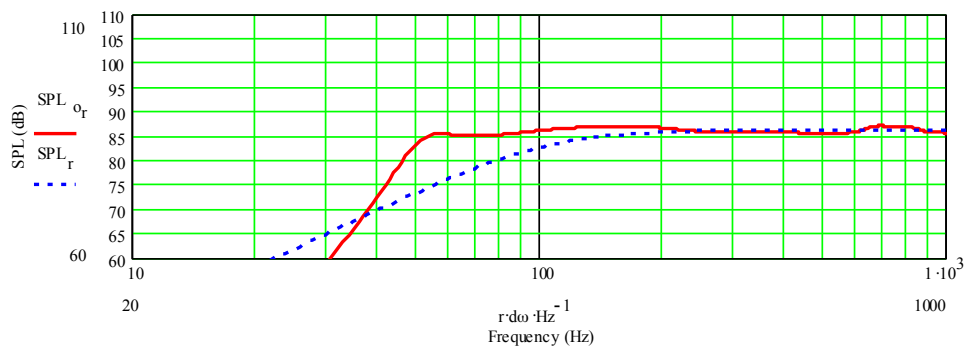
Comments

The dips and peaks will be flattened by stuffing. The peak around 60Hz will also be reduced by stuffing. Please note small peaks shown in MJK sim are often not audible in real life. If there is a problem, additional stuffing will take care of this: Adding light stuffing in the last part of the line (not the port).

I would choose the one with driver offset 14,5 cm which looks like this with 73 gram of stuffing in the upper 2/3 of the main enclosure. I would not worry about the small peak at 60 Hz.



TABAQ



Bjørn Johannesen
August 31st 2016
bjornarnejohannesen@gmail.com