

Deadtime Generation

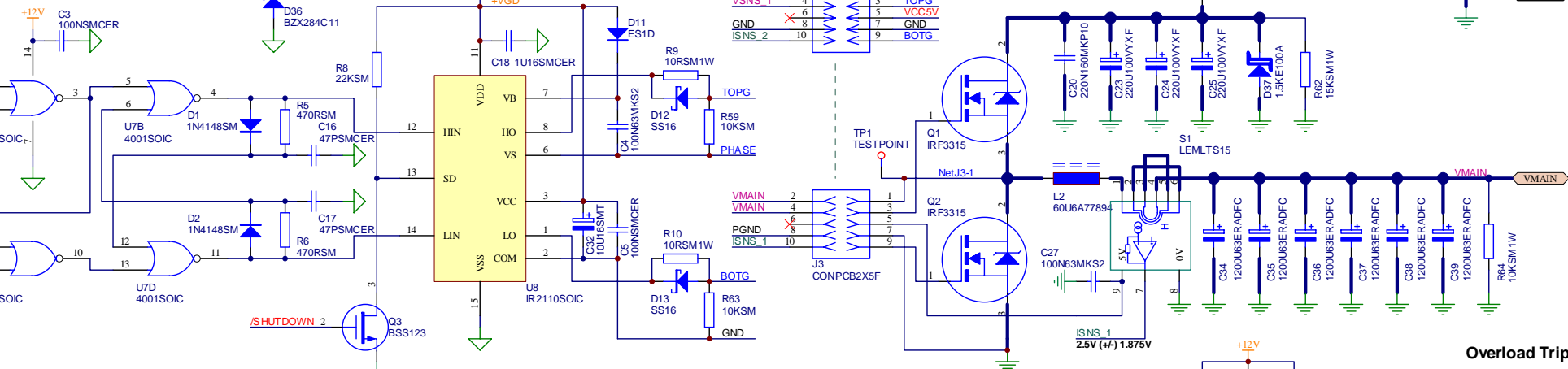
Gate drive is held powered and shutdown as long as Main Supply is over 13V, even if control circuit power rails are all absent.

Gate Drive

VSNS 1
VSNS 1
GND
ISNS 2

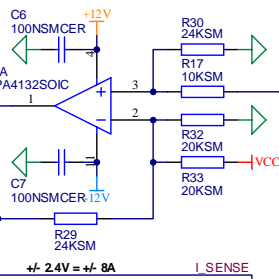
PHASE
TOPG
VCC5V
GND
BOTG

+75V
PGND

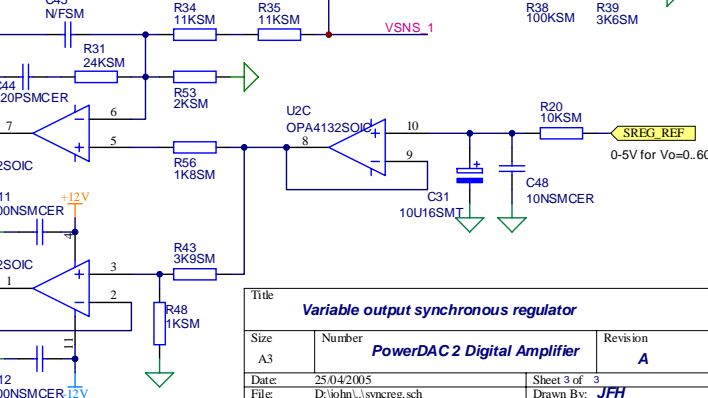


Overload Trip

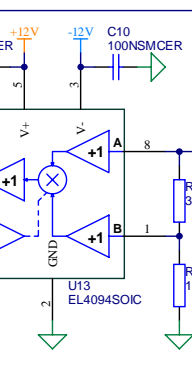
Current Sense



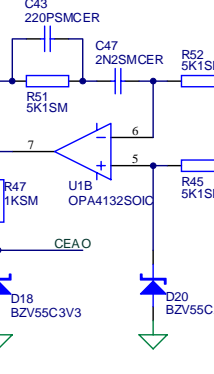
Voltage E.A.



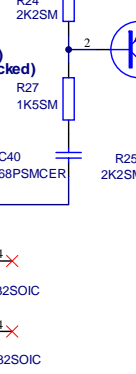
Gain Optimiser VCA



Average Current E.A.



11V Undervoltage Lockout



CA Gain Max = 30 at Vo=0V
VCA Gain = 0.033
SREG_REF = 0V
CA Gain Min = 1.0 at Vo=60V
VCA Gain = 1.0
SREG_REF = 5V

Title		
Variable output synchronous regulator		
Size	Number	Revision
A3	PowerDAC2 Digital Amplifier	A
Date:	25/04/2005	Sheet 3 of 3
File:	D:\john\...\synreg.sch	Drawn By: JFH