

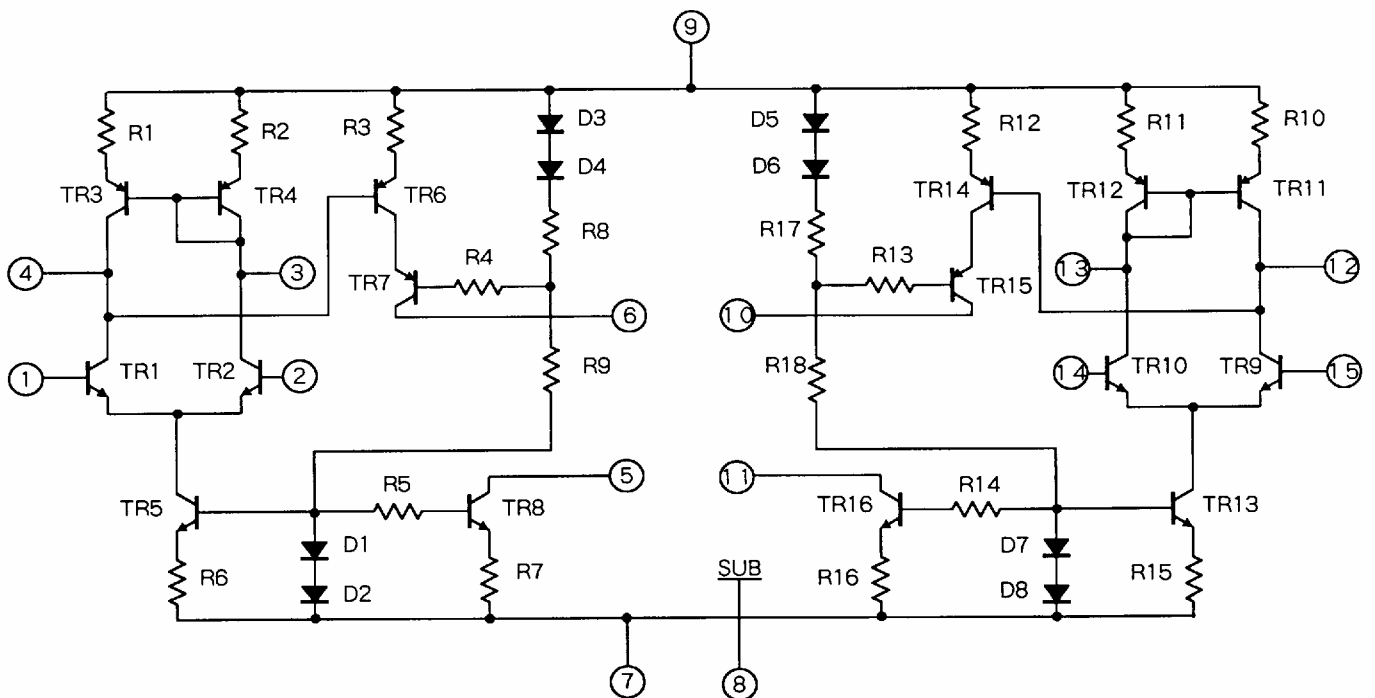
STK3042 III Series

★2ch./1package, \pm Power Supply
 ★Voltage Amplifier
 ★THD = 0.005%

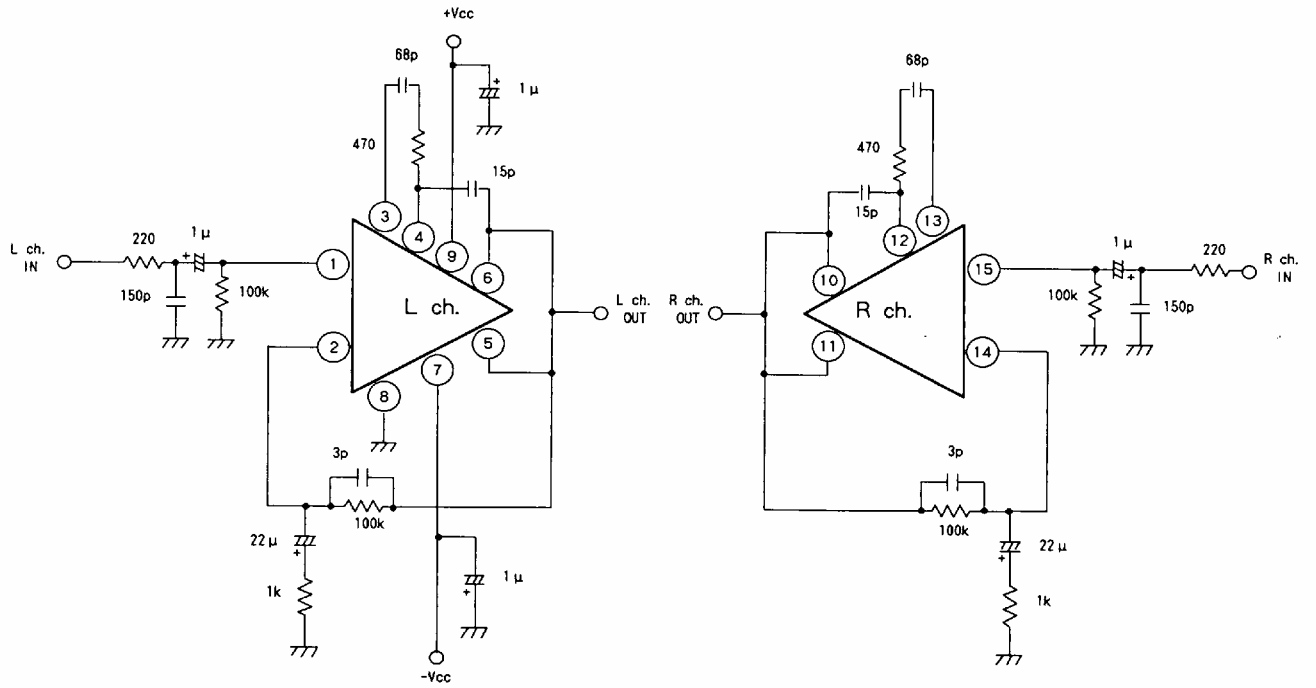
| Model | Maximum Ratings 最大定格 | Recommended Operating Conditions 推奨動作条件 [V] | Operating Characteristics (Recommend Operating Conditions at Test Circuit) 動作特性 (Test Circuitにて 推奨動作条件による) | |
|-------------|-------------------------|--|--|--------------------------------------|
| | Vcc max [V] | Vcc [V] | Po max RL=8 Ω f=20~20kHz [W] | THD (V _G =40dB) [%] |
| *STK3042III | ± 55 | ± 36 | 40 ~ 60 | 0.005 |
| *STK3062III | ± 59 | ± 41 | 60 ~ 80 | 0.005 |
| *STK3082III | ± 65 | ± 47 | 80 ~ 90 | 0.005 |
| *STK3102III | ± 75 | ± 50 | 90 ~ 100 | 0.005 |
| *STK3122III | ± 80 | ± 55 | 100 ~ 120 | 0.005 |
| *STK3152III | ± 90 | ± 60 | 120 ~ 150 | 0.005 |

* Under mass production

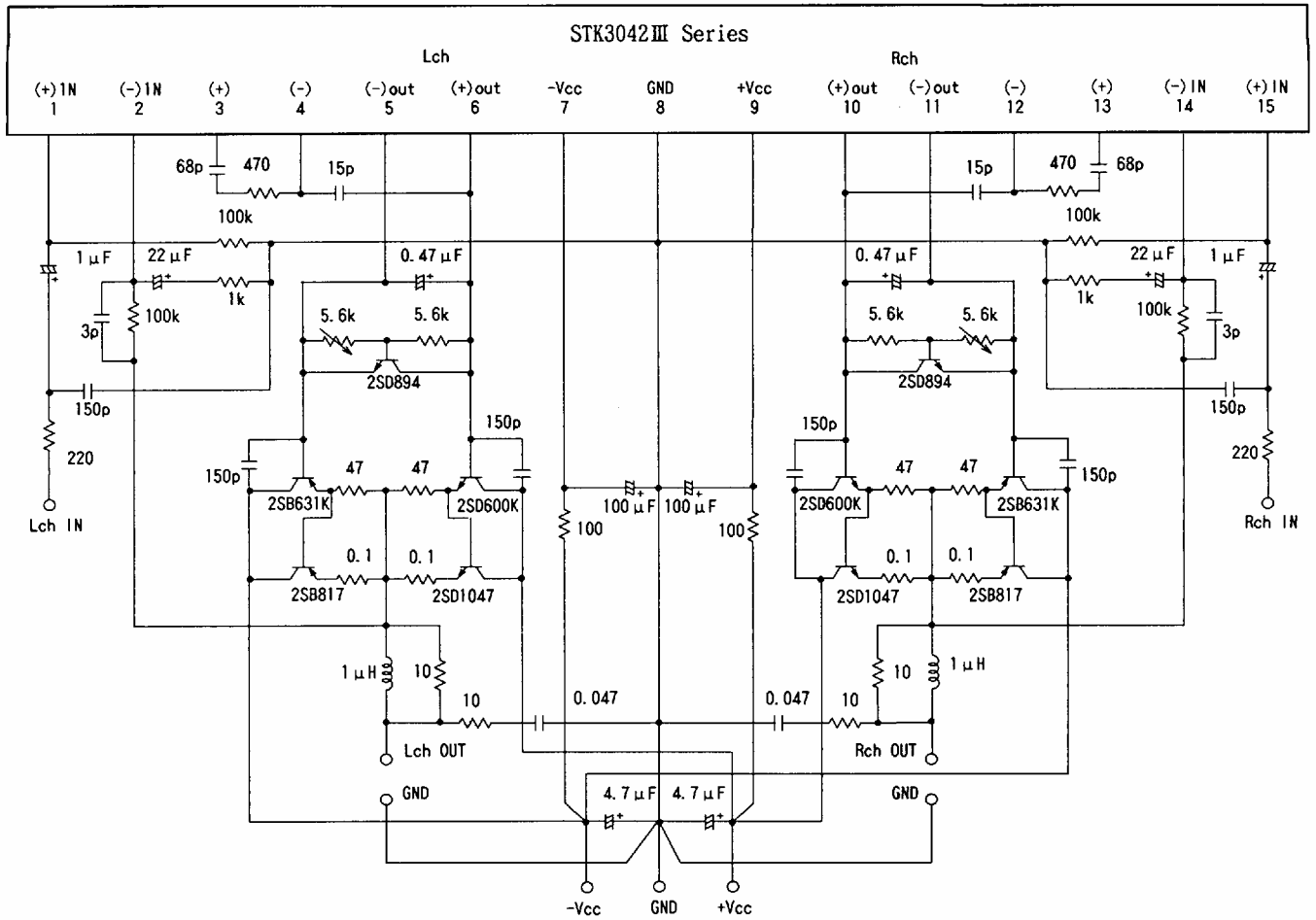
Equivalent Circuit



■ Test Circuit



Application



Case Outline

