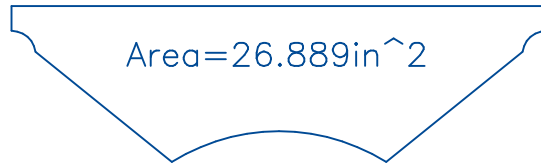
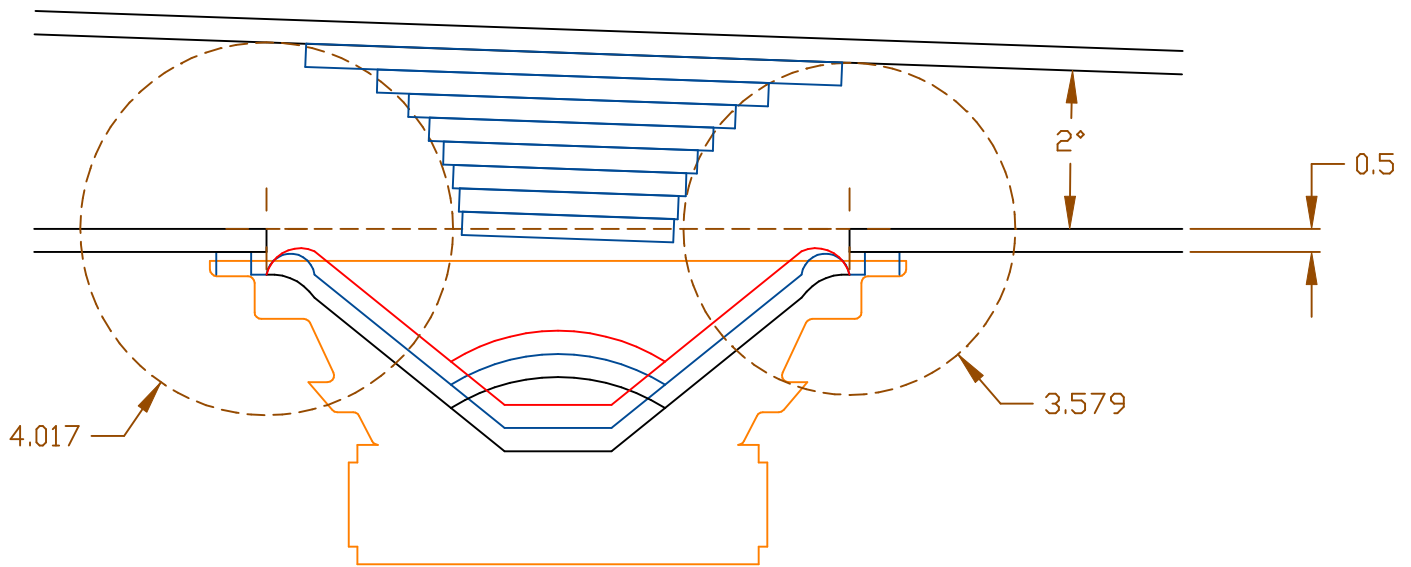
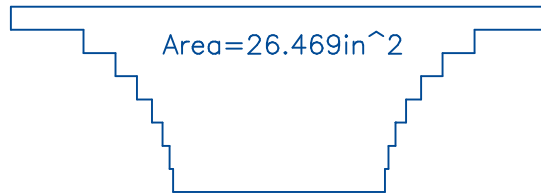


Cone/throat area in middle  
of cone @ rest:



Resulting correction using 1/2" discs:



Generic 15" driver w/  $\pm 0.5$ " cone deflections.

Original duct height @ S2=3.8"nom.  
Corrected duct height @ S2=2.52"

Cone\_correction\_using\_discs\_concept\_side.dwg