

Input = 1.73 Vrms @ 0dB

12B4 = 6.5

46 = 5.6

300B = 3.85

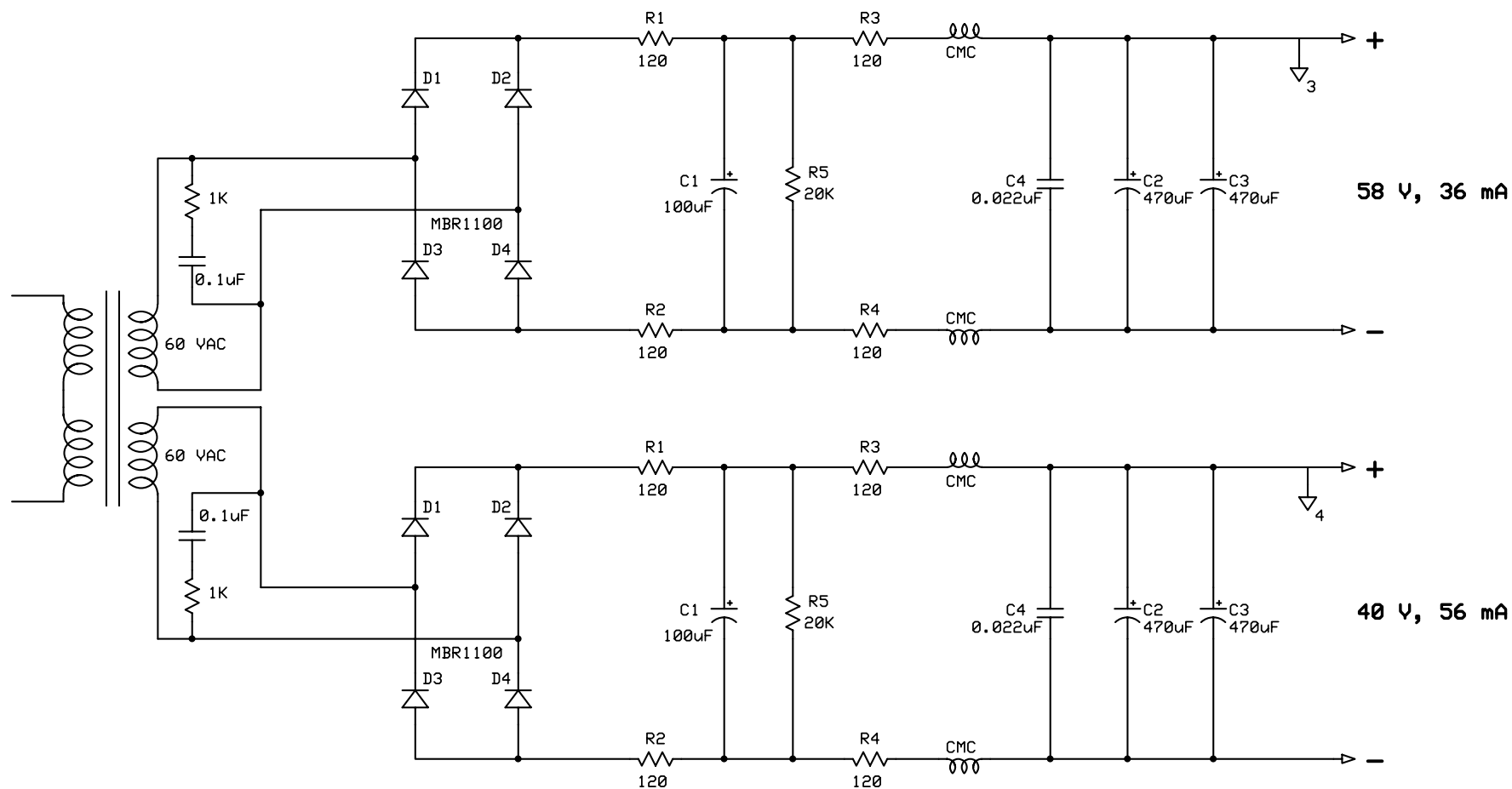
Push Pull 300B

Left Channel

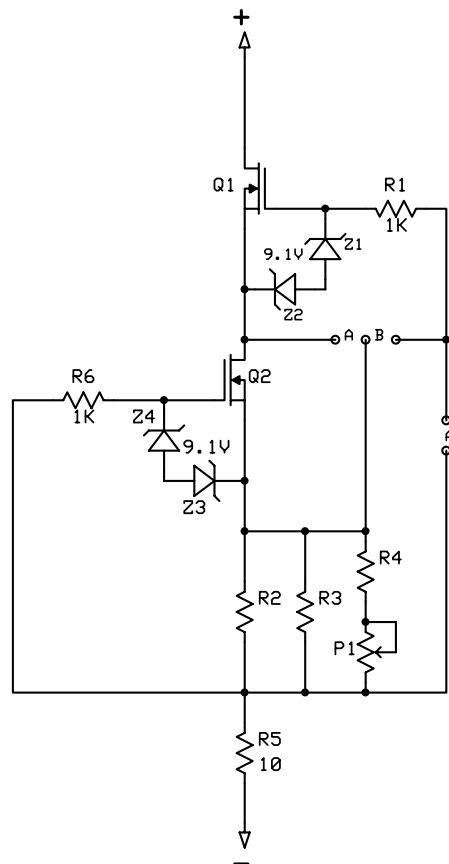
Rev 2.0

6/18/2008

Page 2 of 4



Negative Supply



Jumper A for single CCS
Do not populate Q2, R6, Z3,Z4

Jumper B for cascode CCS

Cascode Current Source