

1. Table of Contents (This Page)

Created on Sat Jun 28 18:11:41 2014

2. component

3. solder

4. plated-drill

5. unplated-drill

6. componentmask

7. soldermask

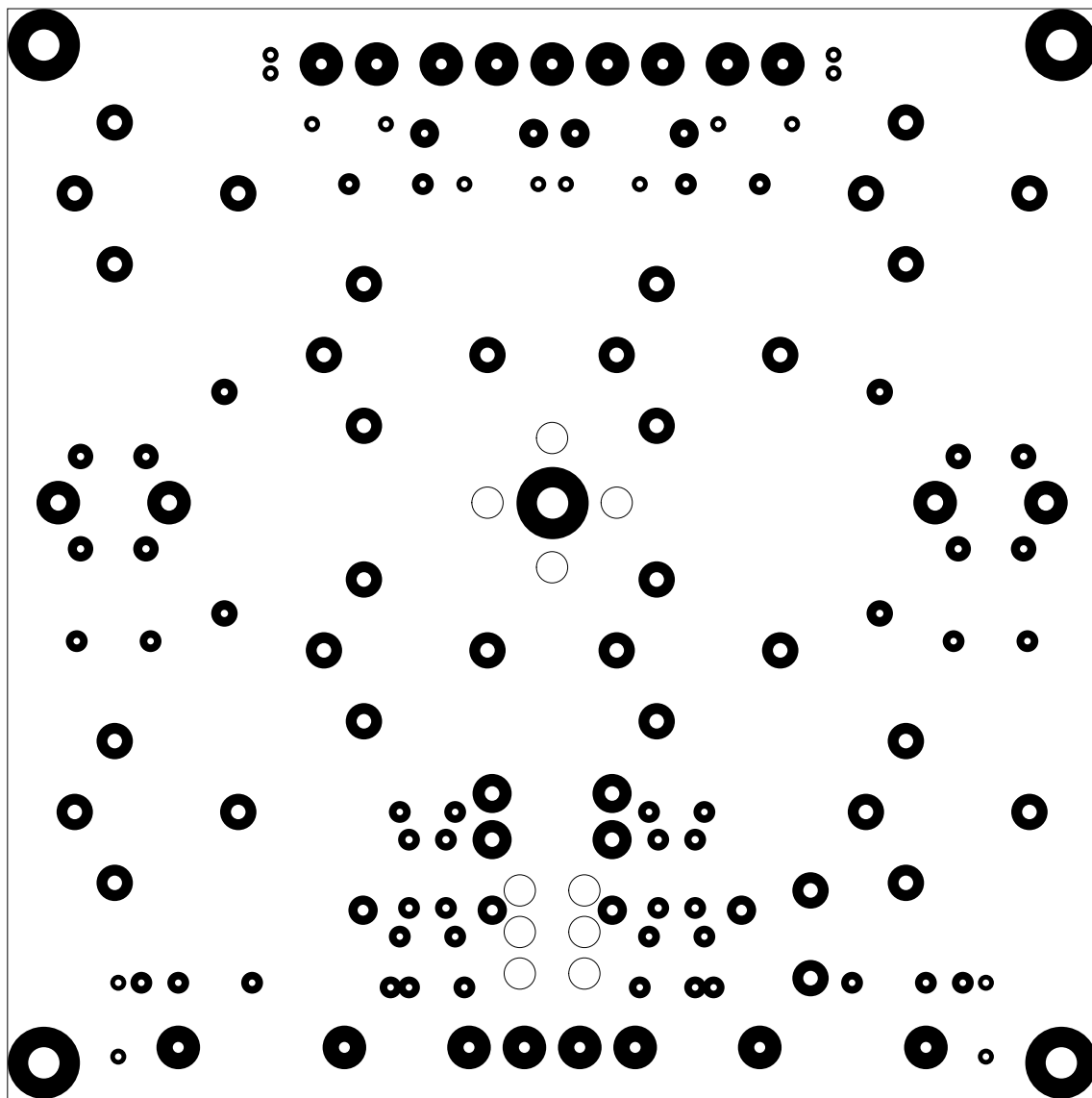
8. topsilk

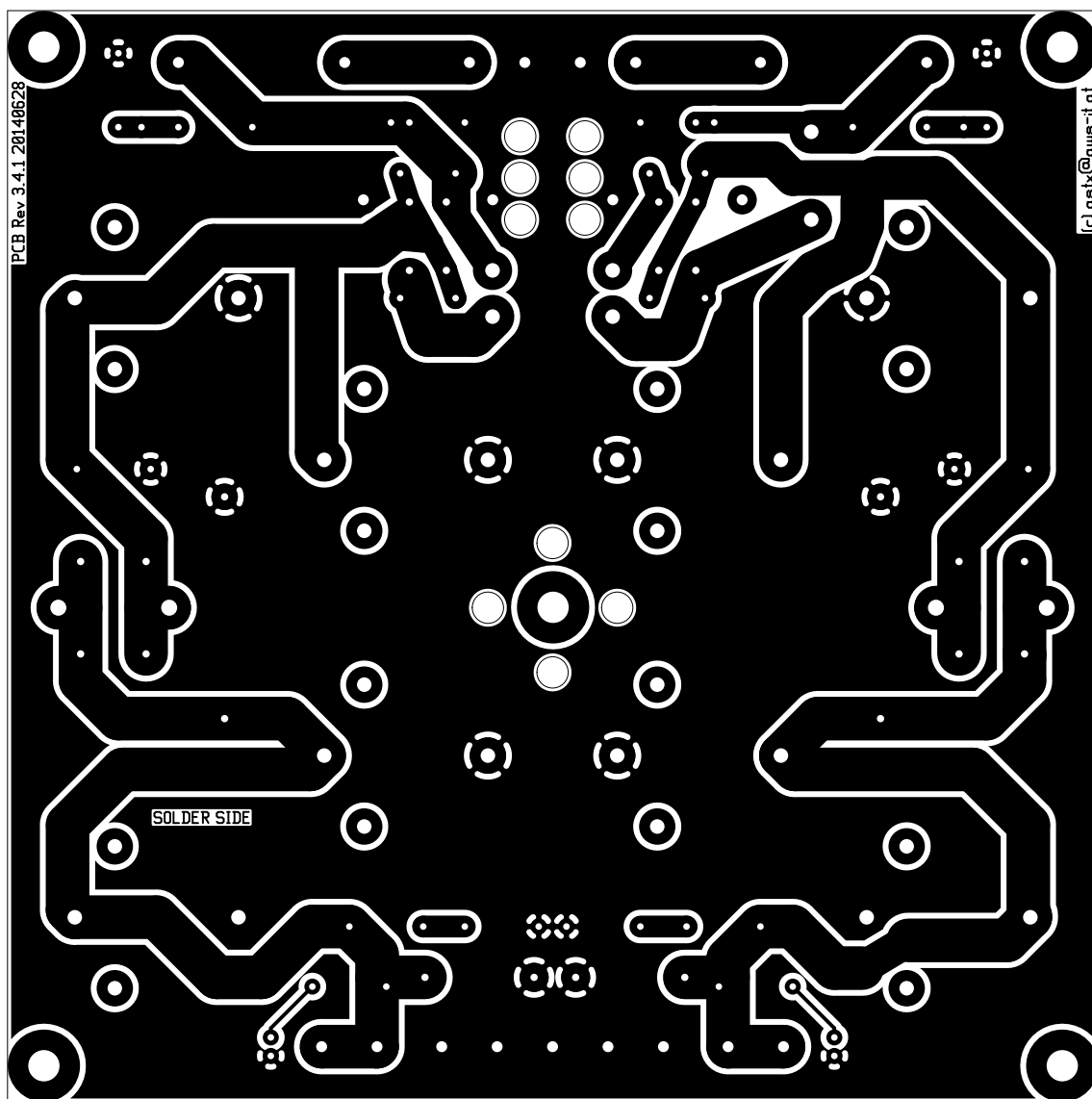
9. bottomsilk

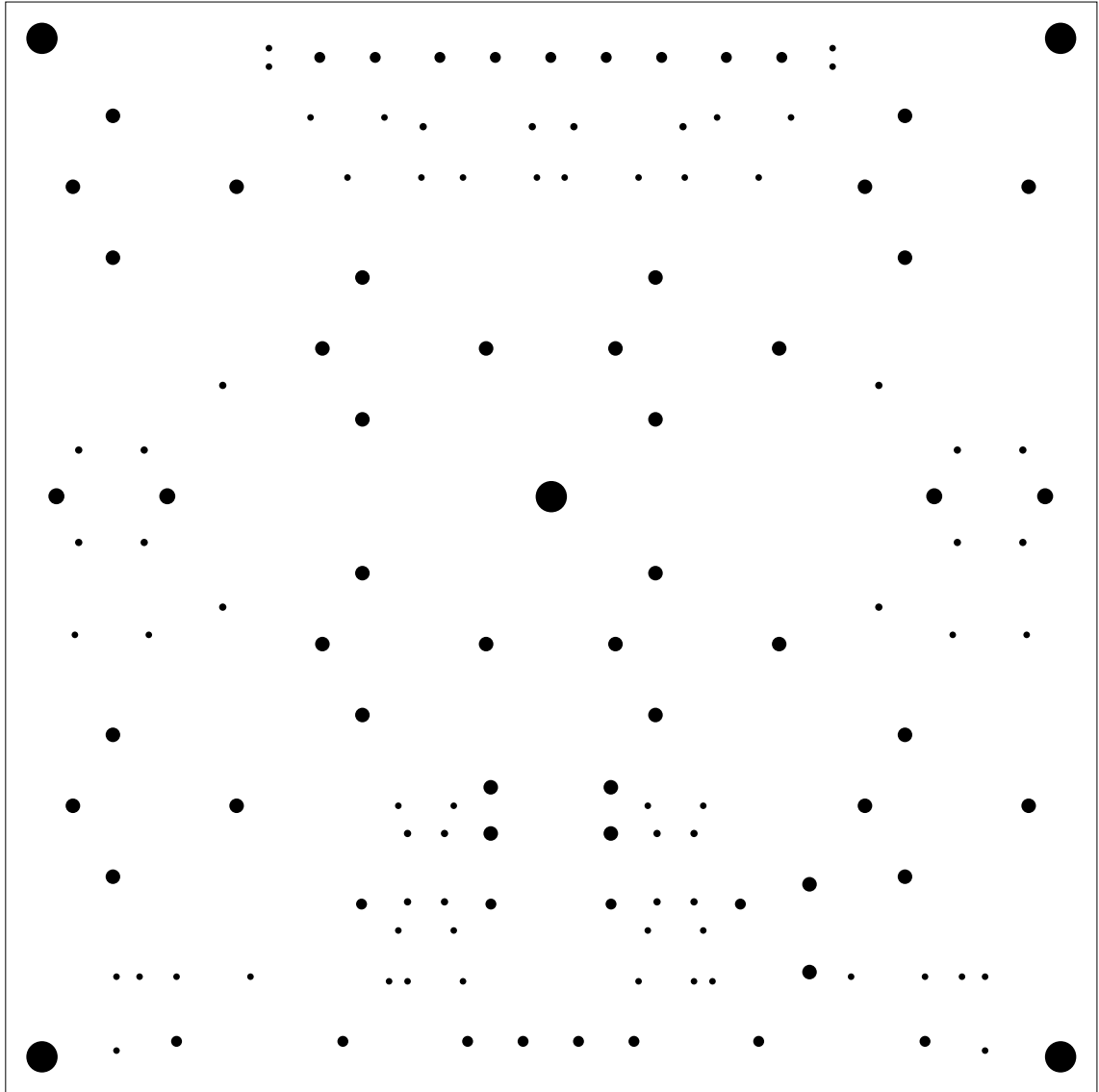
10. topassembly

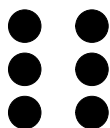
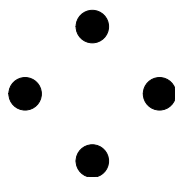
11. bottomassembly

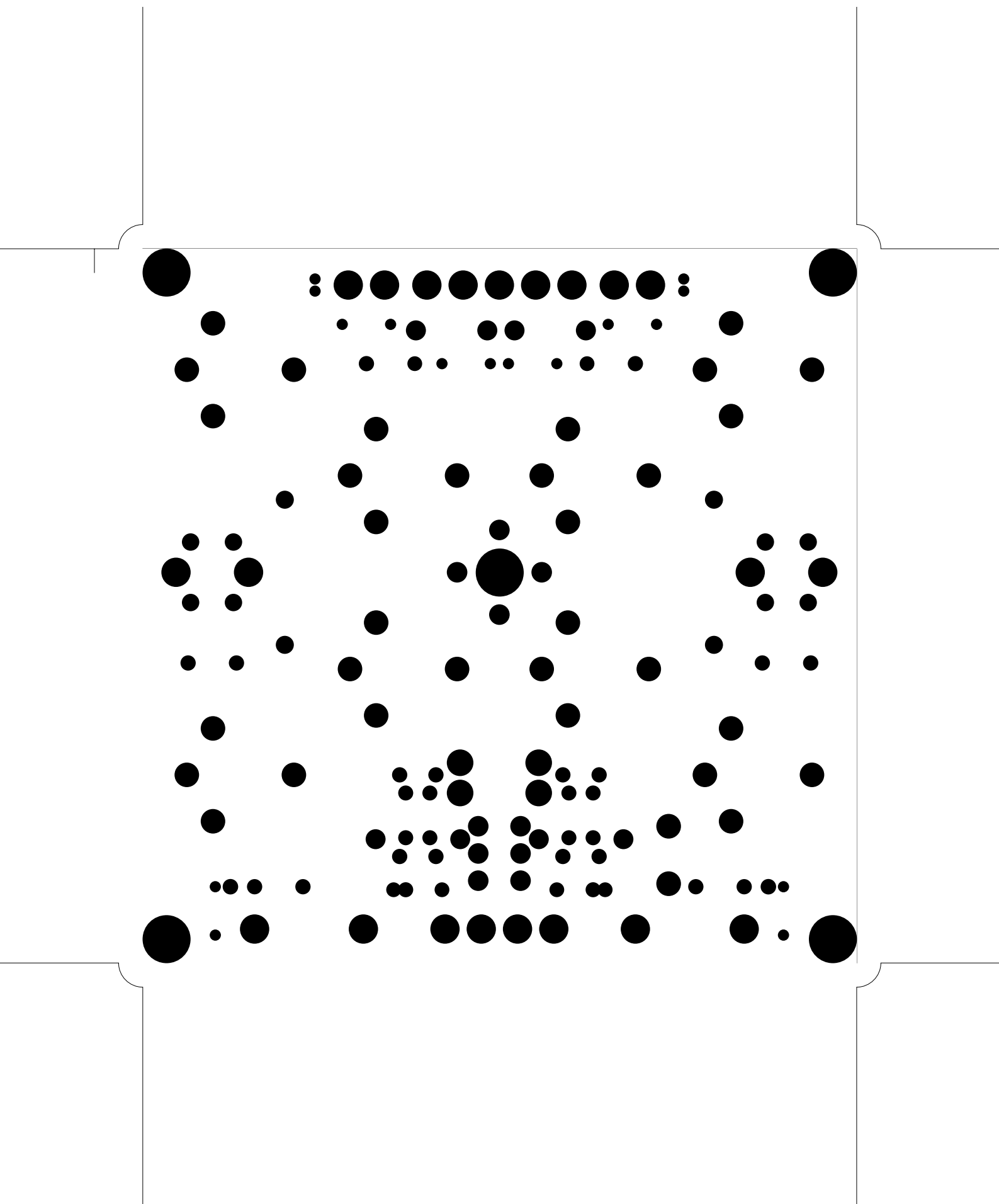
12. fab

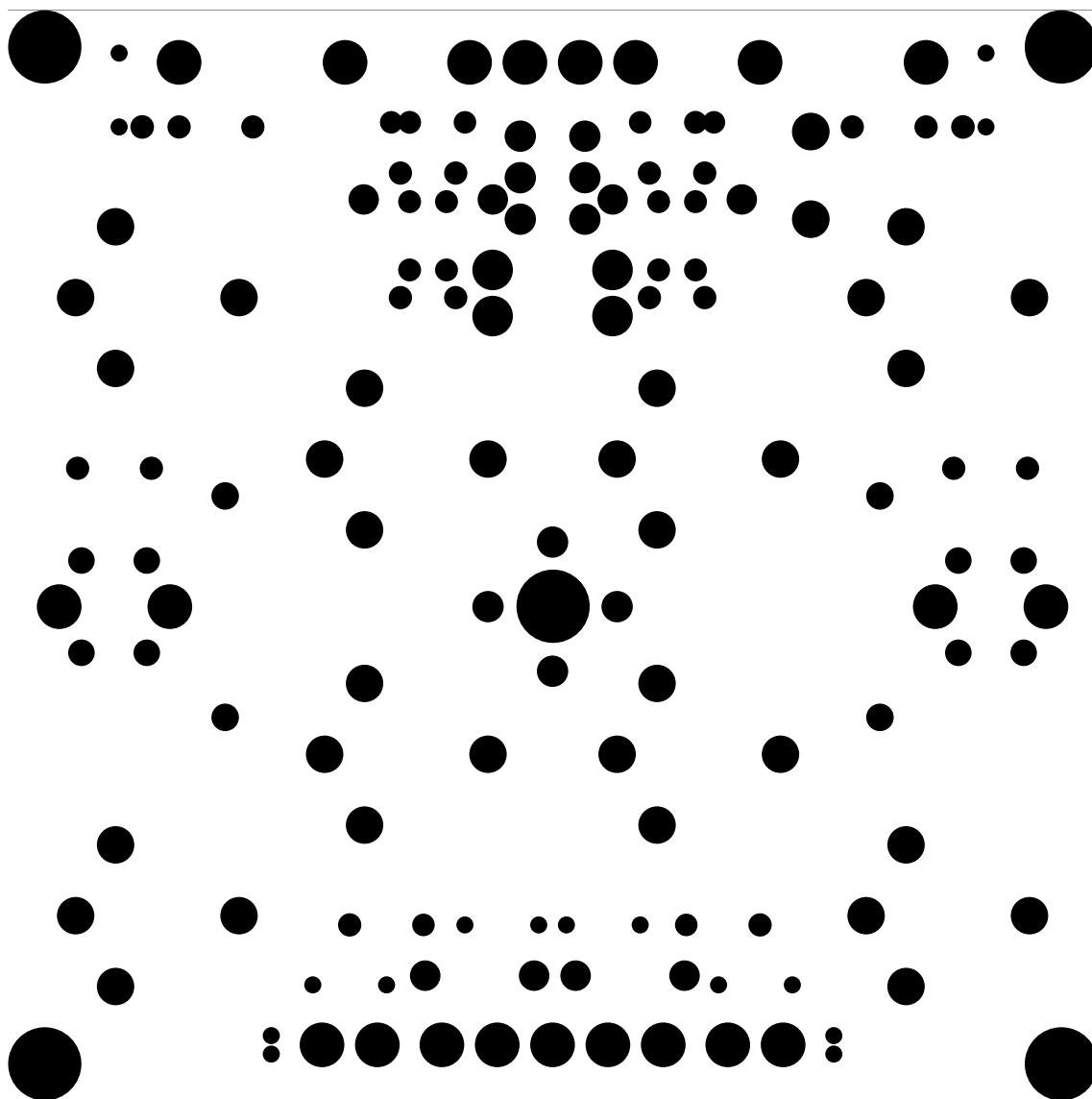


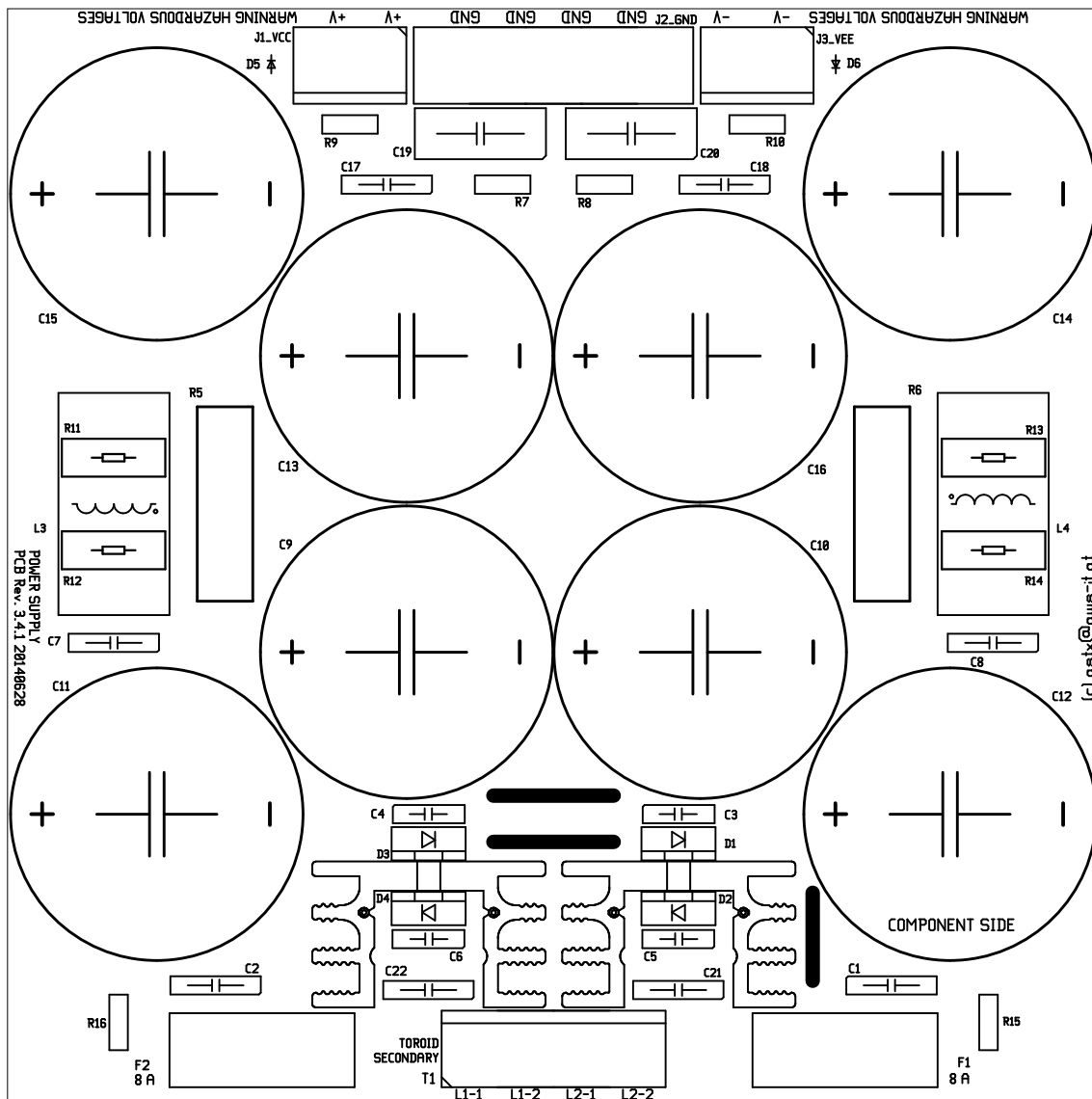




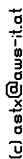


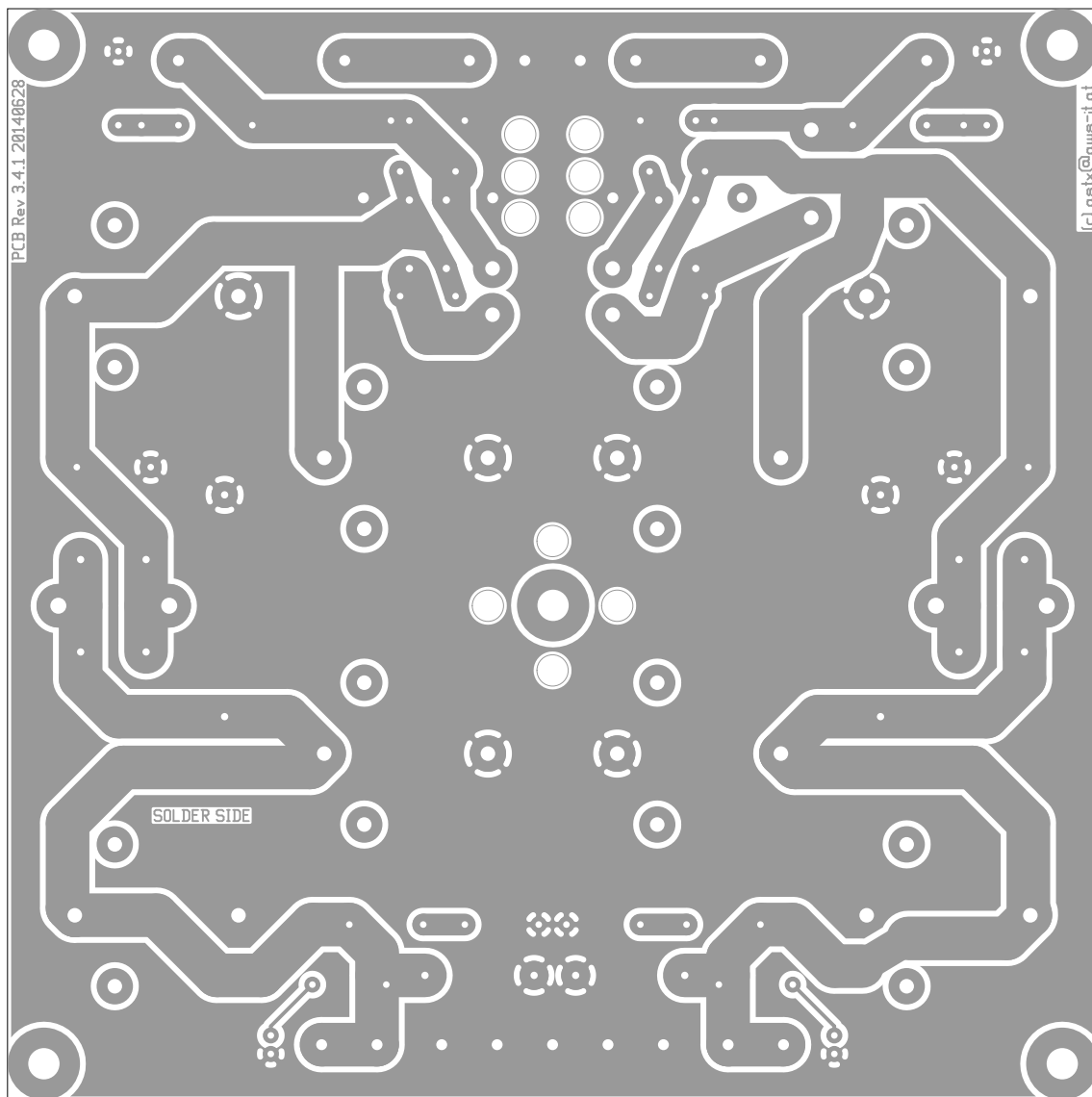








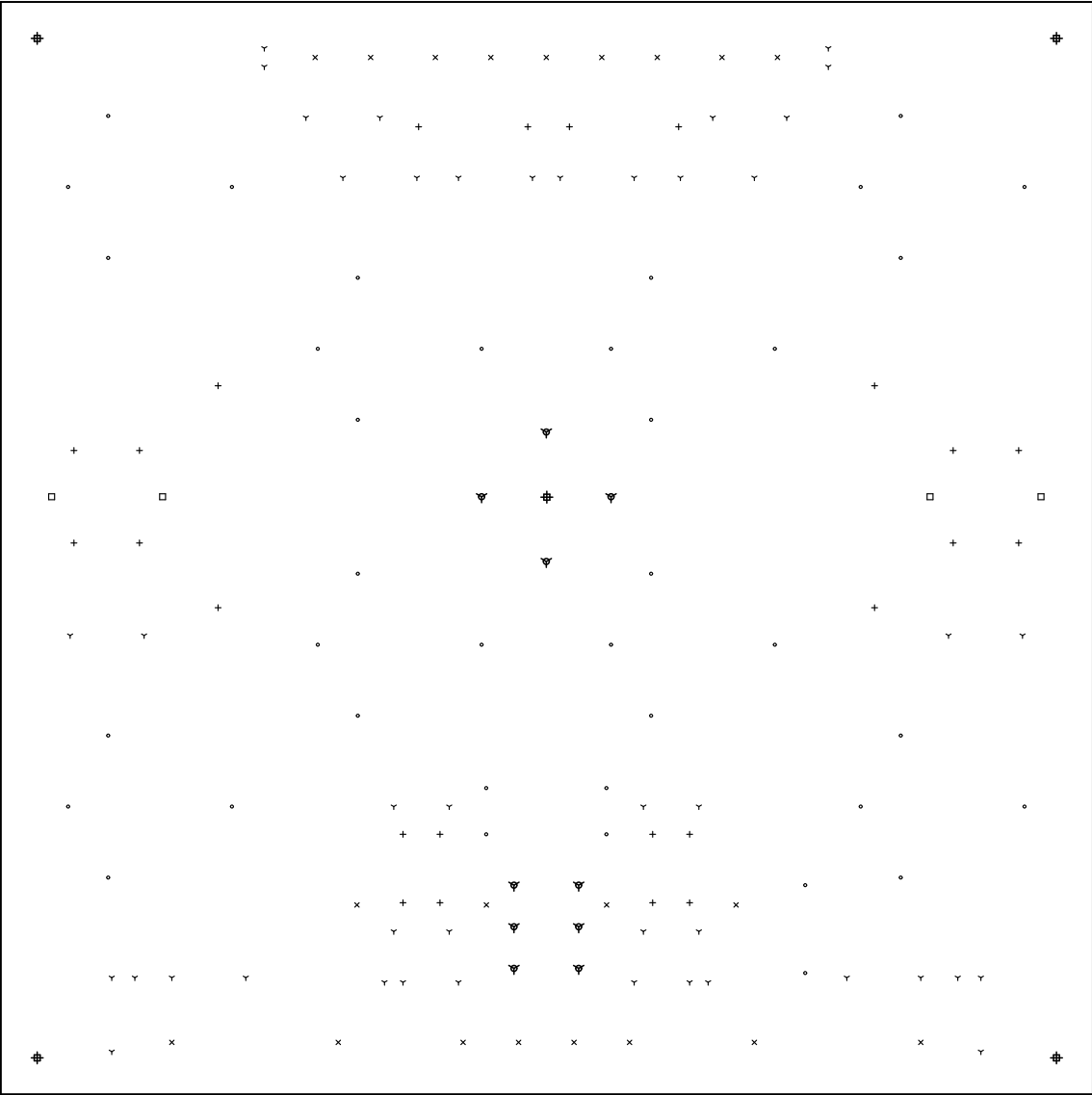




There are 6 different drill sizes used in this layout, 146 holes total

Symbol	Diam. (Inch)	Count	Plated?
Y	0.035	44	YES
+	0.039	24	YES
x	0.059	21	YES
o	0.079	38	YES
□	0.087	4	YES
▽	0.170	10	NO
⊕	0.170	5	YES

Title: (unknown) - Fabrication Drawing
Author: toni
Date: Sat Jun 28 16:11:41 2014 UTC
Maximum Dimensions: 5905.511811 mils wide, 5905.511811 mils high



Board outline is the centerline of this 8.000000 mil rectangle - 0,0 to 5905.511811,5905.511811 mils