

# 1. Table of Contents (This Page)

Created on Sat Jul 26 16:45:19 2014

2. component

3. solder

4. plated-drill

5. componentmask

6. soldermask

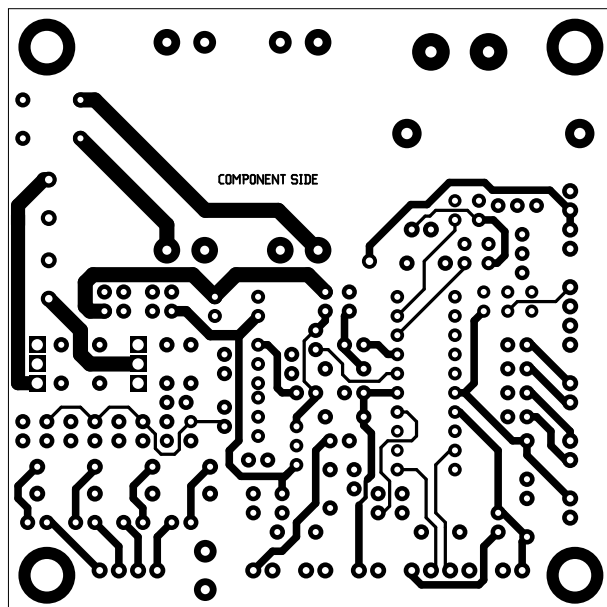
7. topsilk

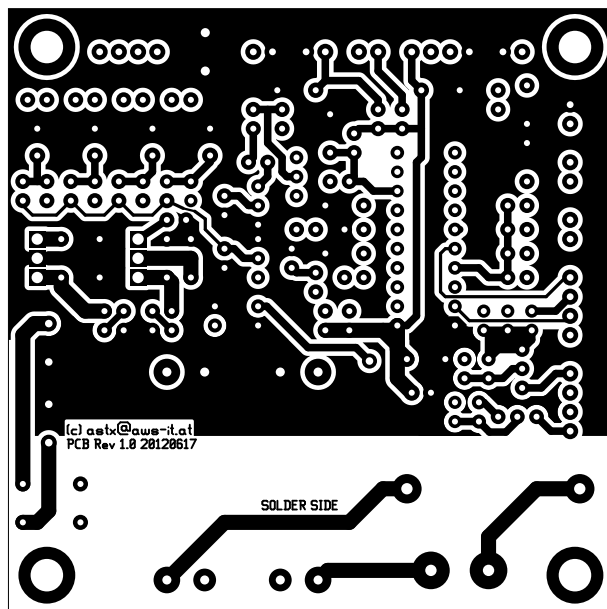
8. bottomsilk

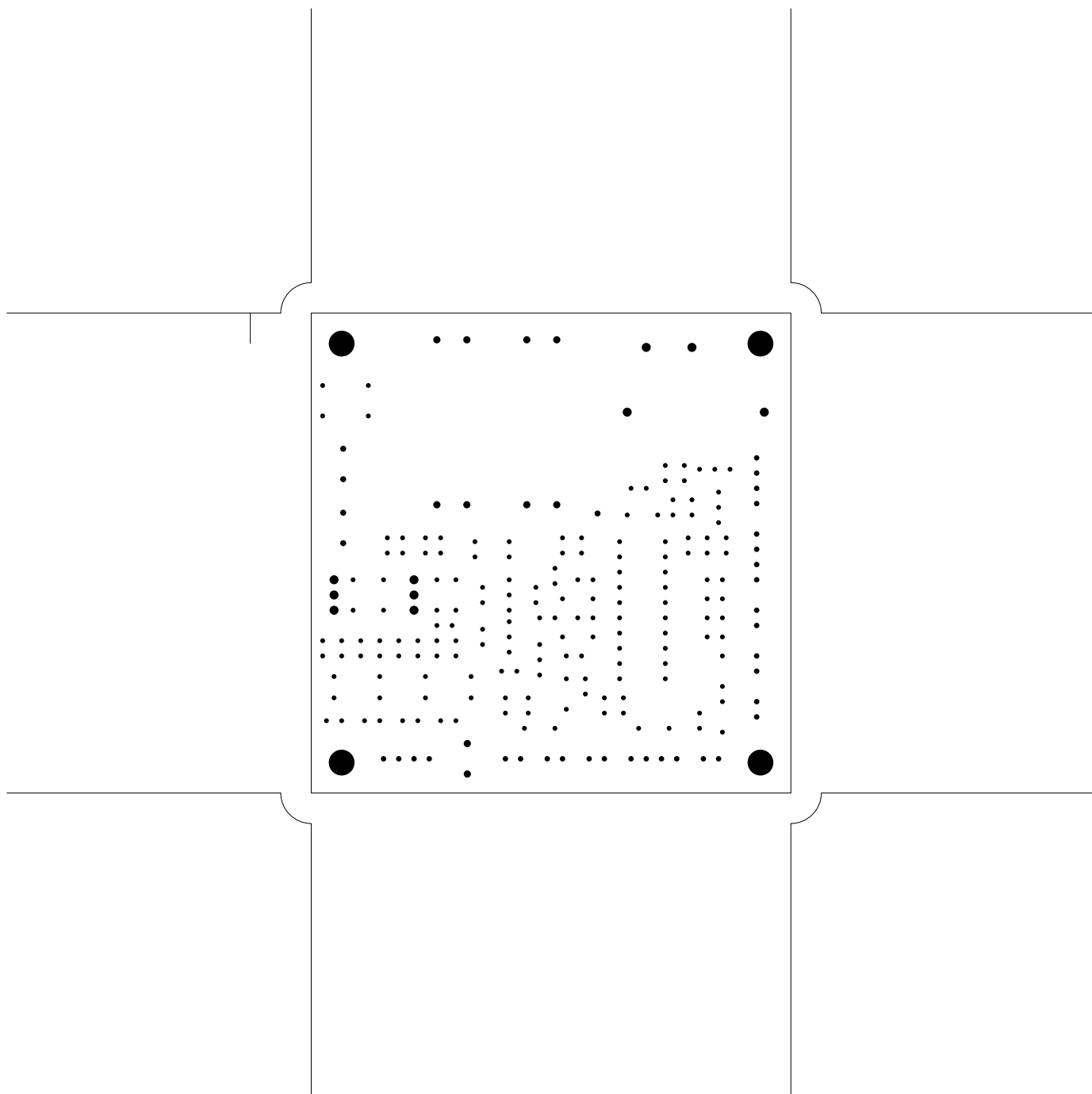
9. topassembly

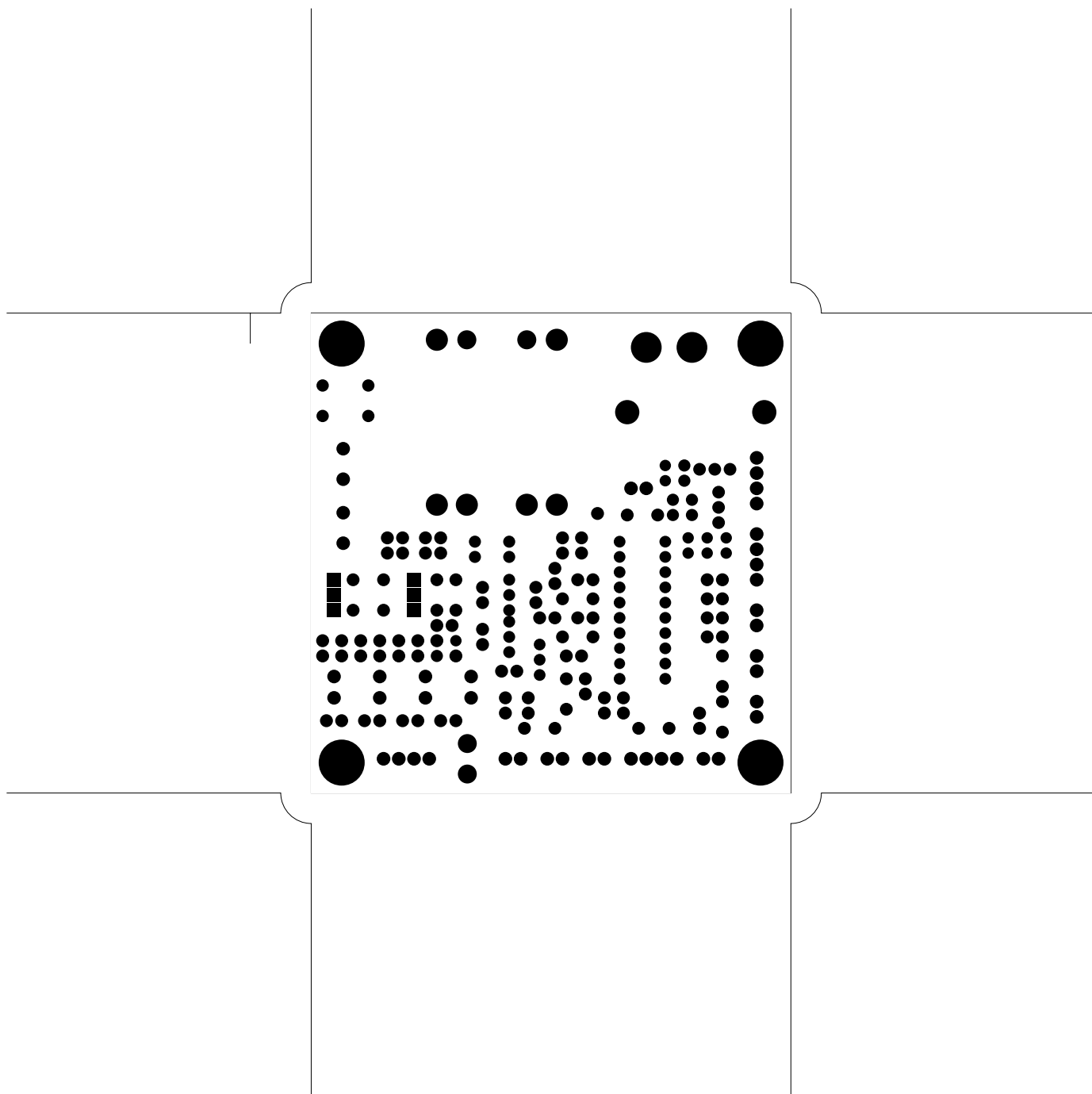
10. bottomassembly

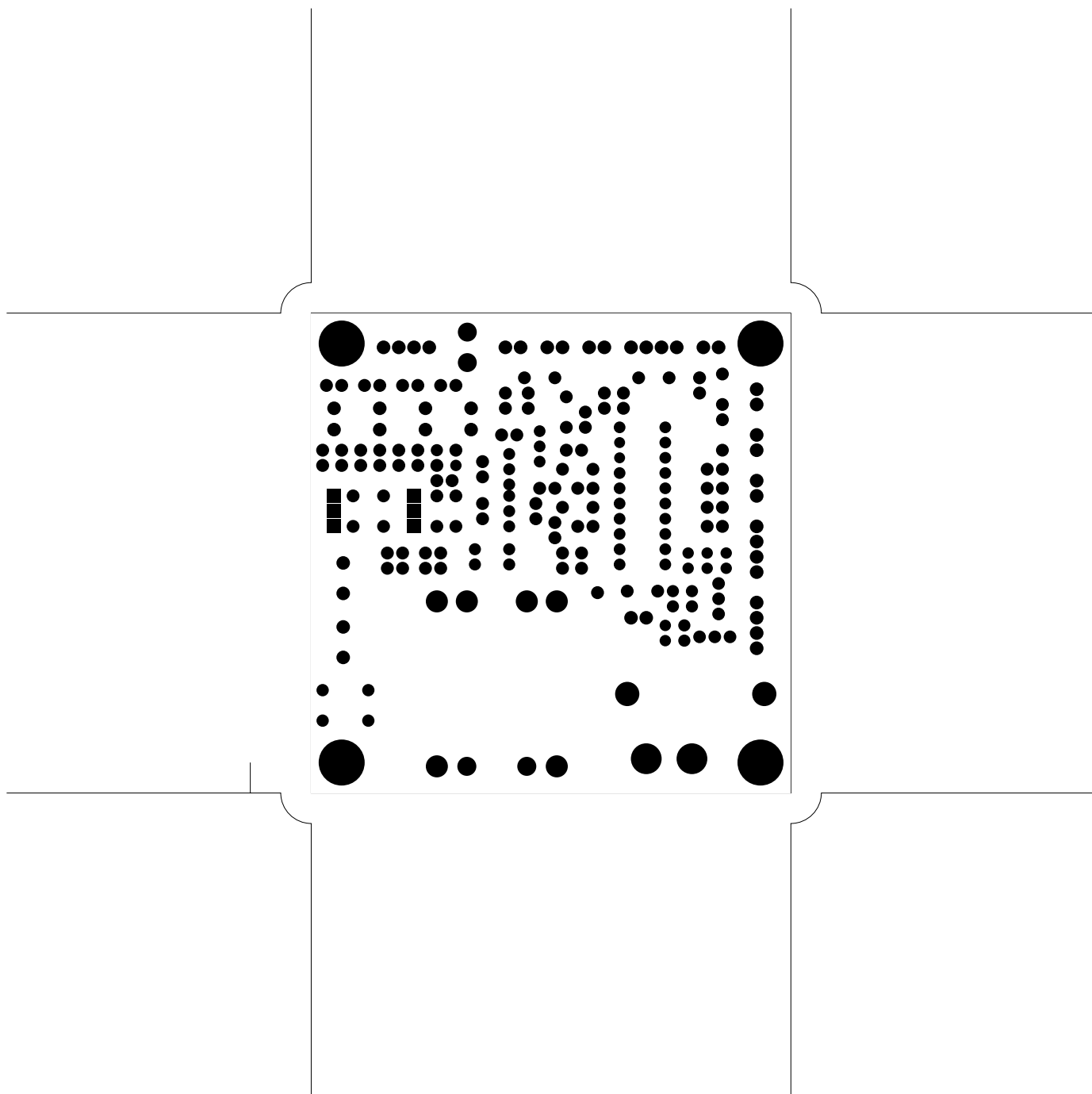
11. fab

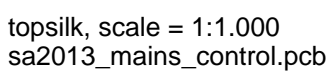


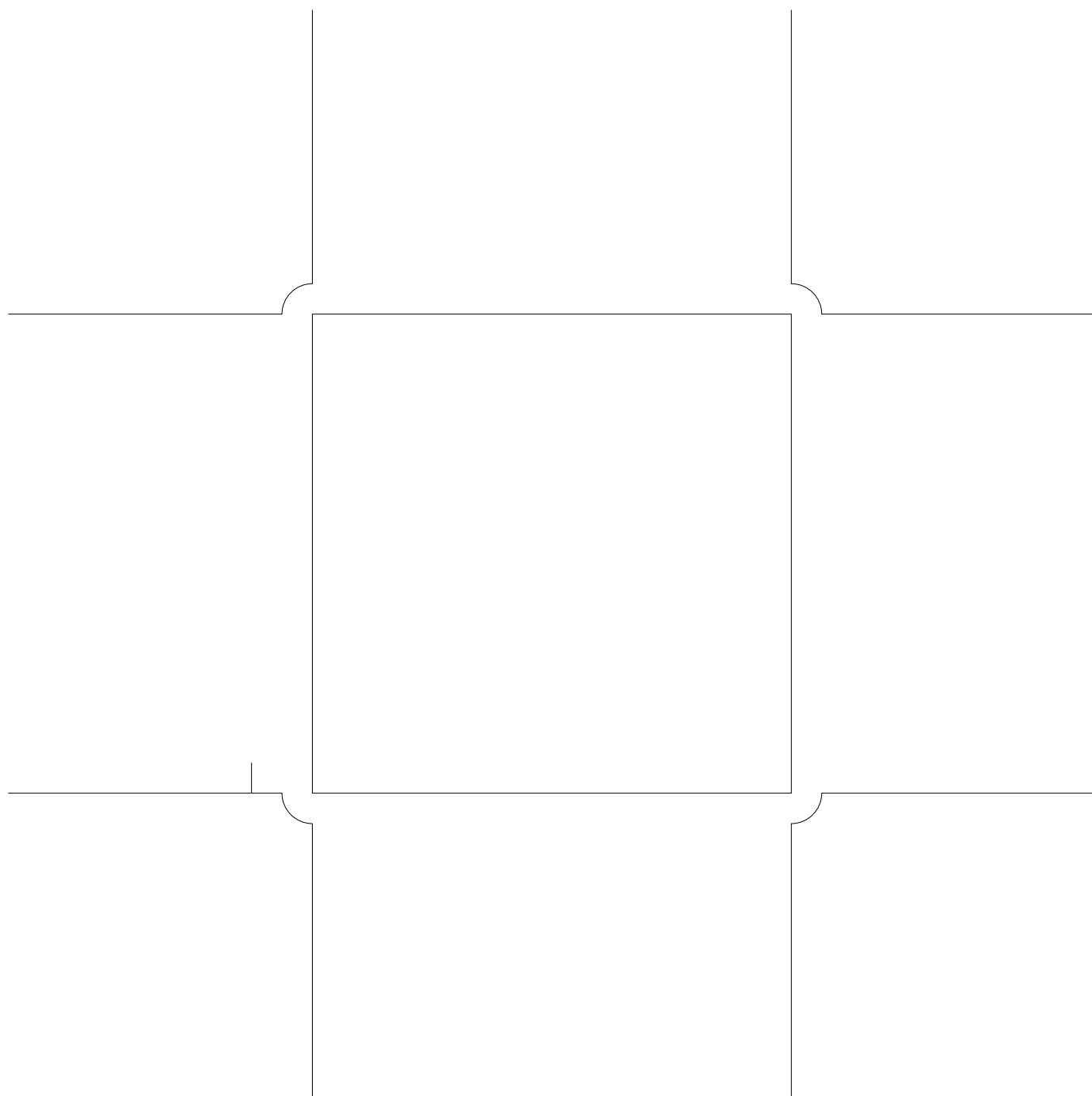




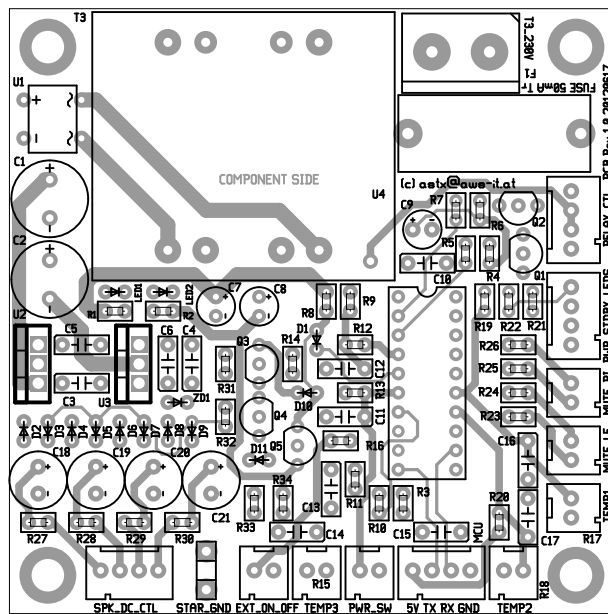


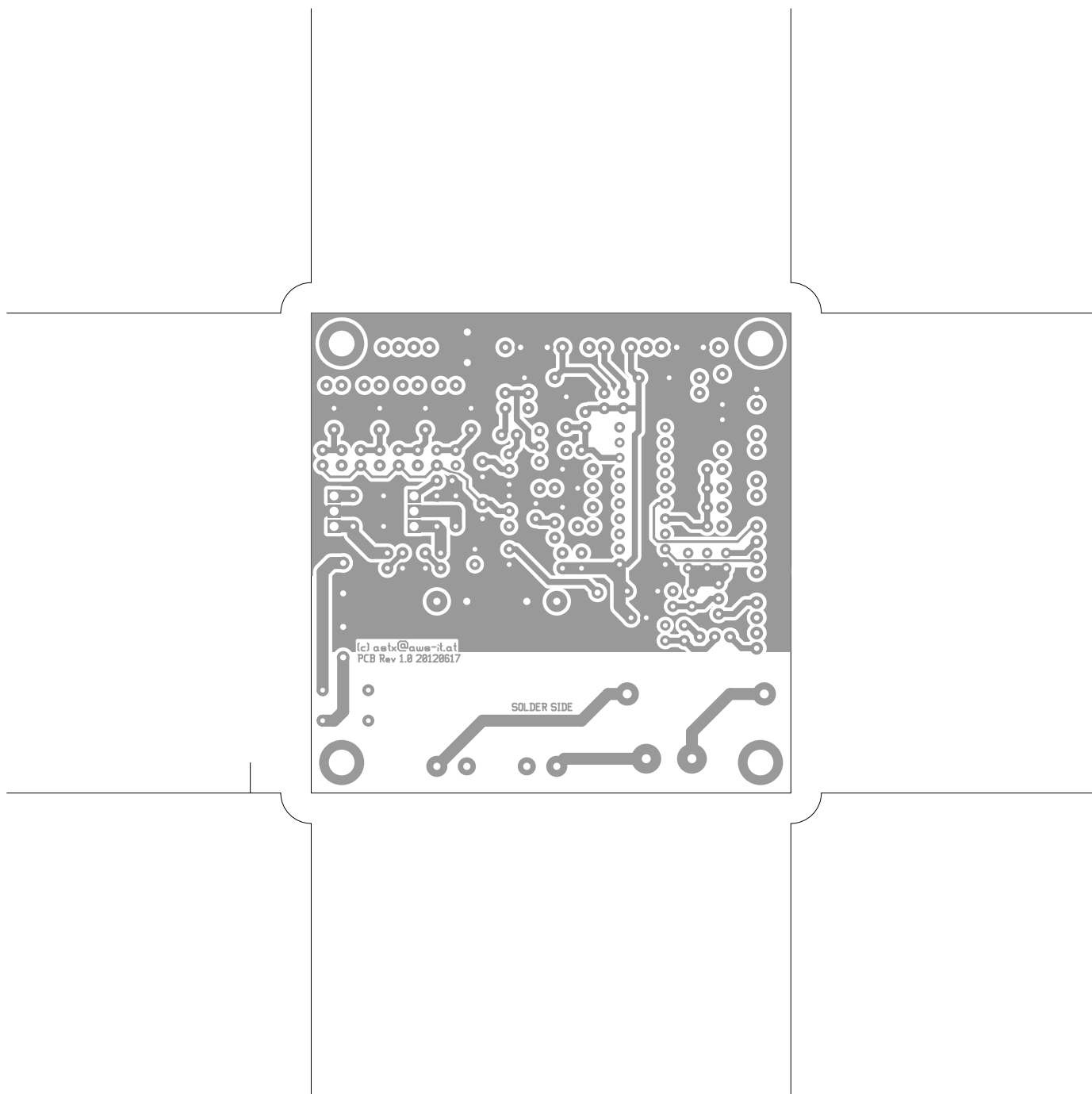












There are 6 different drill sizes used in this layout, 226 holes total

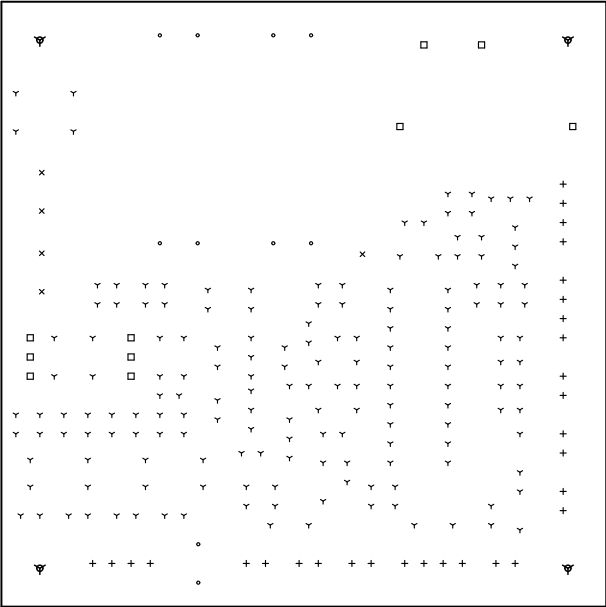
Symbol	Diam. (Inch)	Count	Plated?
Y	0.031	167	YES
+	0.035	30	YES
x	0.039	5	YES
o	0.047	10	YES
□	0.059	10	YES
▽	0.170	4	YES

Title: (unknown) - Fabrication Drawing

Author: toni

Date: Sat Jul 26 14:45:19 2014 UTC

Maximum Dimensions: 3149.606299 mils wide, 3149.606299 mils high



Board outline is the centerline of this 8.000000 mil rectangle - 0,0 to 3149.606299/3149.606299 mils